

1

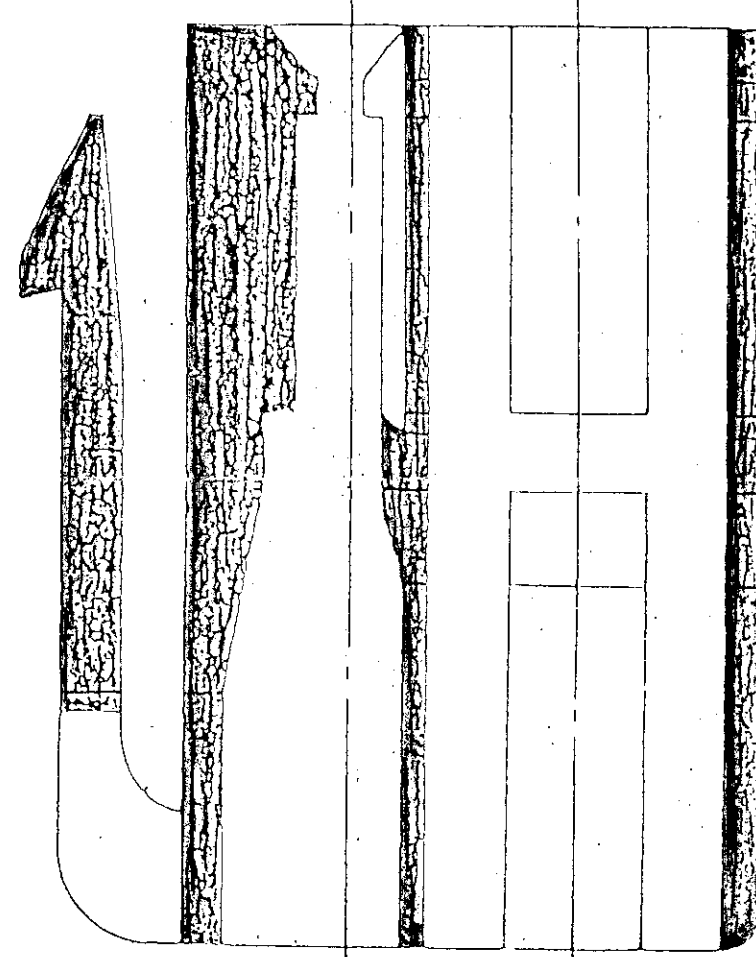
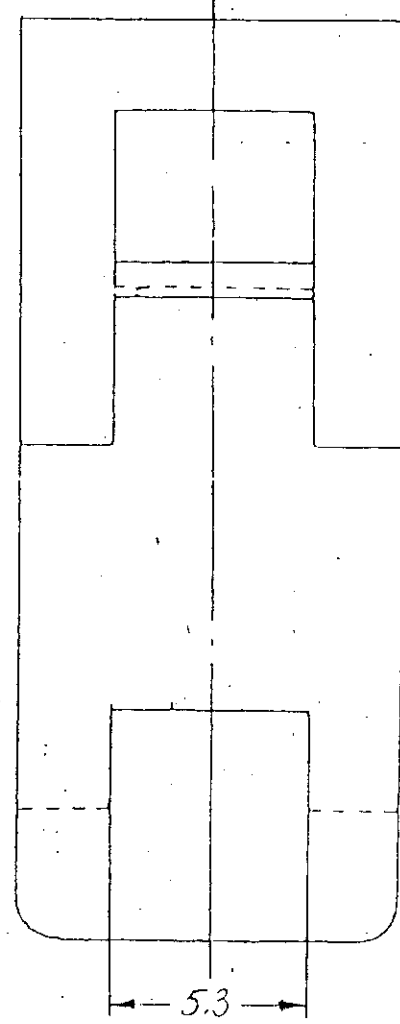
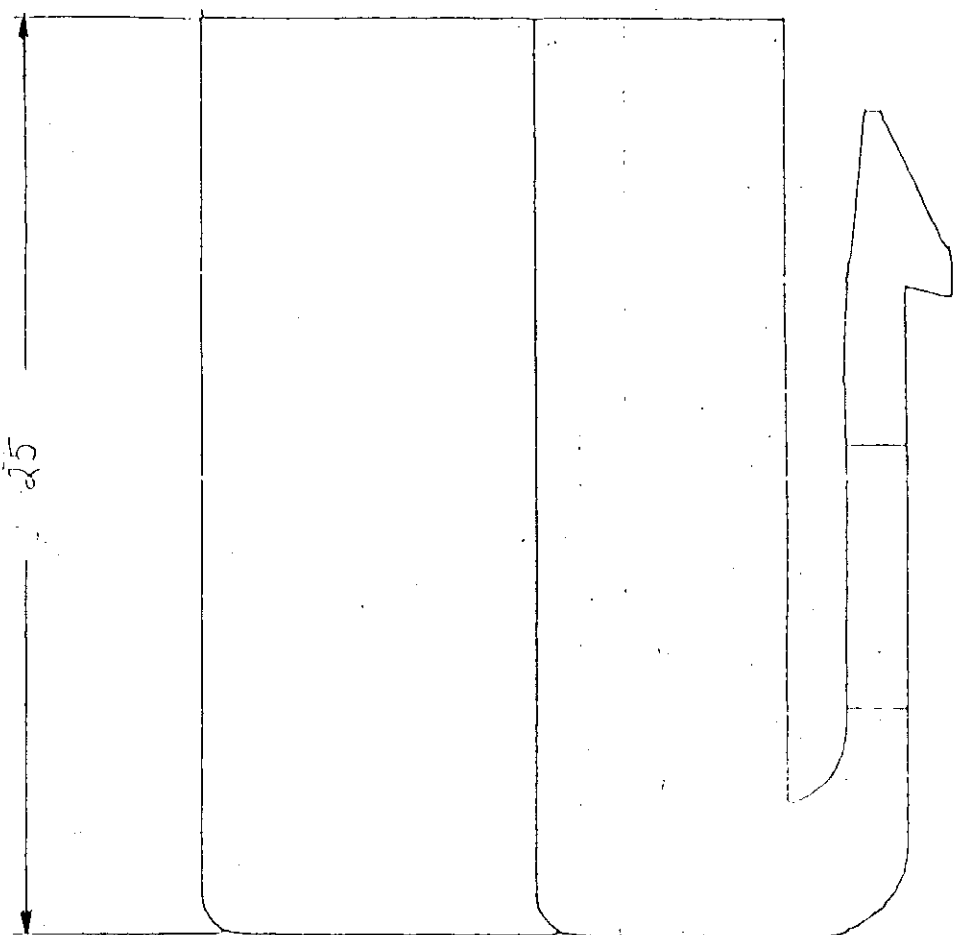
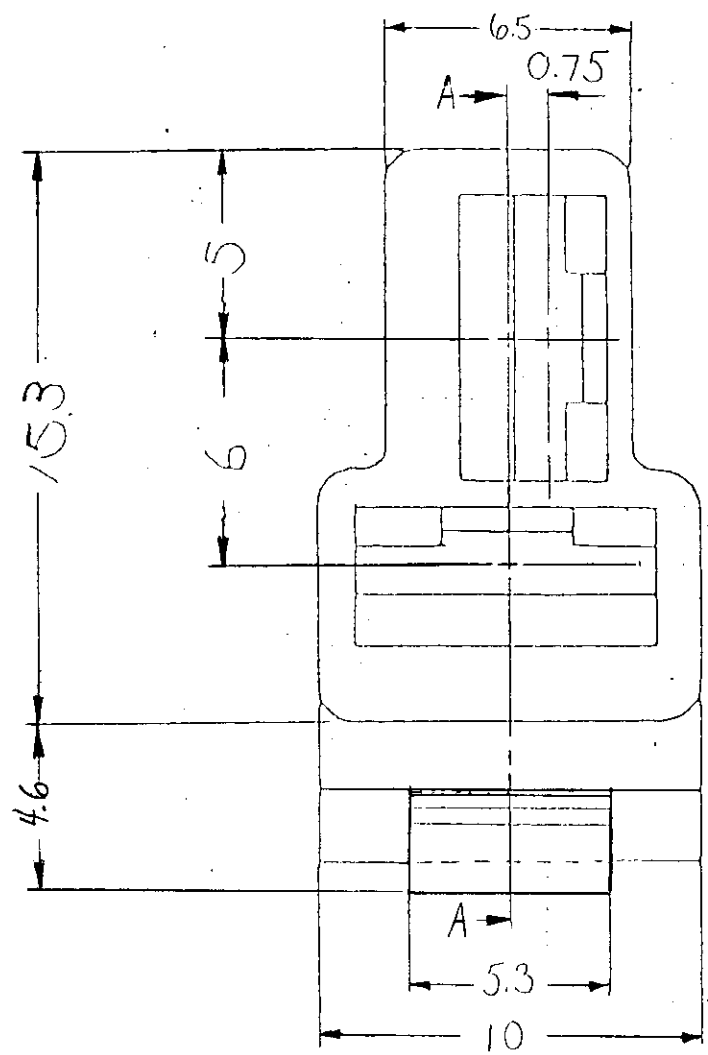
2

3

4

5

PART NO.	COLOR
7123-2228	NATURAL
7123-2228-30	BLACK
7123-2228-50	PINK
7123-2228-60	GREEN
7123-2228-80	BROWN
7123-2228-90	BLUE



SEC. A-A

NOTES

- MATING HOUSING NO. : 7122-2228 ETC.
- APPLICABLE TERMINAL NO. : 7116-2090 ETC.

ISSUE MARK

DATE	REVISION RECORD	NO.	CHKD
08-18-89	NEW	C89-A146	TD

CUSTOMER		MATERIAL SPEC.		TREAT. & FIN.	
CUSTOMER PART NO.		CUSTOMER DWG NO.		NAME	
OFFICE		STDLIB NO.		2-WAY FEMALE CONNECTOR	
VENDOR		VENDOR NO.		PART NO.	
DWG TYPE		DWG SOURCE		DWG DATE	
R		7123-2228:RA		08-18-89	
UNIT		SCL		ANGLE	
mm		5/1		3	
APPROVED		CHECKED		DESIGN	
K. Kubota		Richard		D. S.	
09-22-89		09-15-89		08-28-89	
DWG NO.		TRIAL PART NO.		PART NO.	
7123-2228:RA				7123-2228 ETC.	
YAZAKI CORPORATION					

PLAN HOLD CORPORATION • IRVINE, CALIFORNIA
REORDER BY NUMBER 075AR

DRAWING NUMBER

PLAN HOLD CORPORATION • IRVINE, CALIFORNIA
REORDER BY NUMBER 075AR

7123-2228:RA

1

2

3

4

5

X-ON Electronics

Largest Supplier of Electrical and Electronic Components

Click to view similar products for [Automotive Connectors](#) category:

Click to view products by [Yazaki](#) manufacturer:

Other Similar products are found below :

[003-018-000](#) [60993906-B](#) [72.330.1035.1](#) [73.353.4028.0](#) [F358300-B](#) [F407400](#) [776880-1](#) [827153-1](#) [8N1515-32-24P](#) [9-1326729-8](#) [925474-1](#)
[928905-1](#) [964562-4](#) [968782-1](#) [98891-1012](#) [12004475-L](#) [12041318-B](#) [12052466](#) [12015909](#) [1-21030-1](#) [12041318](#) [12047957](#) [12185550](#)
[12336-12](#) [12147304](#) [13681974](#) [13755420](#) [13783086](#) [13832576](#) [13542772](#) [1393425-2](#) [13964573](#) [1428188-1](#) [1437287-3](#) [1438231-5](#)
[1428188-2](#) [DS00-7P-090](#) [DS07-19S-5020](#) [1456983-5](#) [1456987-7](#) [APD-7CP-H](#) [APK-SB25A10L](#) [1452931-2](#) [15317331](#) [15435215](#) [15491972](#)
[15305306](#) [15369261](#) [15396680](#) [15470590](#)