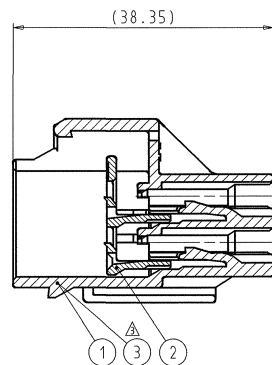
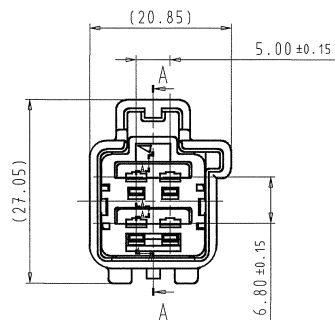
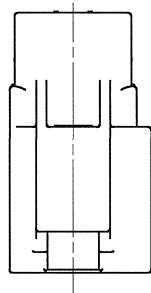
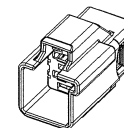


1	2	3	4	5			
SUB ASSEMBLY PART NO.	NO.	PART NO.	PART NAME	MATERIAL	COLOR	QTY.	YAZAKI MATING PART NO.
7282-6446-40	①	7182-6446-40	YESC KAIZEN 2.8 SYSTEM CONNECTOR 4P (M) HOUSING (TYPE-A)	PBT-GF15	LIGHT GREY	1	7283-6446-40
	②	7158-6210-50	YESC KAIZEN 2.8 SYSTEM CONNECTOR 4P (M) FRONT HOLDER	PBT	△ORANGE	1	
7282-6446-30	③	7182-6446-30	YESC KAIZEN 2.8 SYSTEM CONNECTOR 4P (M) HOUSING (TYPE-A)	PBT-GF15	BLACK	1	7283-6446-40
	④	7158-6210-50	YESC KAIZEN 2.8 SYSTEM CONNECTOR 4P (M) FRONT HOLDER	PBT	ORANGE	1	

- △ NOTES:
1. MATERIAL: SEE TABLE;
 2. COLOR: SEE TABLE;
 3. APPLICABLE TERMINALS: 7114-4110-02 ETC.;
 4. MATING PART NUMBER: SEE TABLE;
 5. FOR GENERAL GEOMETRICAL TOLERANCE SEE TABLE (ECCENT-ECCENTRICITY);
 6. THE MATERIALS USED IN THIS PRODUCT ARE IN CONFORMITY WITH REQUIREMENTS OF EU ELY 2000/53/EC DIRECTIVE AND ASSOCIATED DOCUMENTS
 7. PRINTED COPIES ARE UNCONTROLLED.THEY ARE POTENTIALLY OUT-OF-DATE AND INVALID. DATABASE IS MASTER.



SECTION A-A



ISOMETRIC VIEW
(SCALE 1:1)

ISSUE MARK

LET	DATE	REVISION RECORD	NO.	CHKD
△	10.03.09	ADDED PART NUMBER & NOTES CHANGE	Y09-0064	G.G.
△	14.09.05	CORRECTED COLOR	C05-D703	G.G.
△	09.09.02	CHANGED REVISION RECORD NUMBER	C02-E308	M.K.
△	09.09.02	NEW	C02-E305	M.K.

GENERAL TOLERANCE													
	10MAX	50MAX	100MAX	250MAX	2500VVR	ANGLE	ECCENT	DWG TYPE	DWG SOURCE	DWG DATE	UNIT	SCL	ANGLE
A	±0.15	±0.2	±0.3	±0.5	±0.75	±30°	0.1	R	NEW	13.12.02	mm	2/1	3
B	±0.2	±0.3	±0.55	±0.95	±1.4	±30°	0.1	APPROVED	CHECKED	CHECKED	DESIGN	DRAWN	
©	±0.3	±0.5	±0.8	±1.4	±2	±30°	0.15	S.TSUCHIYA	G.GREGURTC	M.KASHIYAMAG	GREGURTC		
SPECIFIED							MASS	8.15g					

CUSTOMER	CUSTOMER PART NO.	CUSTOMER DWG NO.	MATL. SPEC.	TREAT. & FIN.
			SEE TABLE	
OFFICE	TRIAL PART NO.		NAME YESC KAIZEN 2.8 SYSTEM CONNECTOR	
VENDOR			4P (M) SUB ASSEMBLY (TYPE-A)	
VENDOR NO.			PART NO. △ 7282-6446-30, 7282-6446-40	
			DWG NO. 7282-6446-40:R	SET DWG NO.
YAZAKI CORPORATION				

1

2

3

4

5

A2

X-ON Electronics

Largest Supplier of Electrical and Electronic Components

Click to view similar products for [Automotive Connectors](#) category:

Click to view products by [Yazaki](#) manufacturer:

Other Similar products are found below :

[003-018-000](#) [60993906-B](#) [M902-2131](#) [M902-2161](#) [M902-2344](#) [72.330.1035.1](#) [73.353.4028.0](#) [F166900](#) [F358300-B](#) [F407400](#) [776880-1](#)
[827153-1](#) [8N1515-32-24P](#) [9-1326729-8](#) [925474-1](#) [928905-1](#) [964562-4](#) [968782-1](#) [98891-1012](#) [12004475-L](#) [12020308](#) [12041318-B](#)
[12052466](#) [12064869](#) [12015909](#) [1-21030-1](#) [12041254](#) [12041318](#) [12047946-B](#) [12110546-B](#) [12131792](#) [12084688](#) [12092346](#) [HD34-18-14PT](#)
[HD46-24-23SN-059](#) [HDB36-24-16PN-059](#) [HDP26-24-9SE-L015](#) [12185280](#) [12185550](#) [12336-12](#) [12191172-B](#) [12S](#) [13545280](#) [13577943](#)
[13681974](#) [13737722-B](#) [13830674](#) [13832576](#) [13849772](#) [13542772](#)