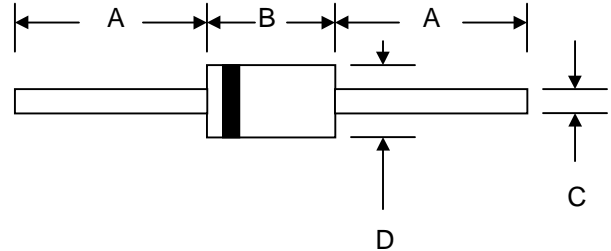


# RL201 – RL207

## 2.0A GLASS PASSIVATED RECTIFIER

### Features

- Diffused Junction
- Low Forward Voltage Drop
- High Current Capability
- High Reliability
- High Surge Current Capability



### Mechanical Data

- Case: Molded Plastic
- Terminals: Plated Leads Solderable per MIL-STD-202, Method 208
- Polarity: Cathode Band
- Weight: 0.40 grams (approx.)
- Mounting Position: Any
- Marking: Type Number
- **Lead Free: For RoHS / Lead Free Version**

| DO-15                |      |      |
|----------------------|------|------|
| Dim                  | Min  | Max  |
| A                    | 24.5 | —    |
| B                    | 5.50 | 7.62 |
| C                    | 0.60 | 0.80 |
| D                    | 2.60 | 3.60 |
| All Dimensions in mm |      |      |

### Maximum Ratings and Electrical Characteristics @ $T_A=25^\circ\text{C}$ unless otherwise specified

Single Phase, half wave, 60Hz, resistive or inductive load.  
 For capacitive load, derate current by 20%.

| Characteristic   | Symbol          | RL201       | RL202 | RL203 | RL204 | RL205 | RL206 | RL207 | Unit             |
|--|-----------------|-------------|-------|-------|-------|-------|-------|-------|------------------|
| Peak Repetitive Reverse Voltage  | $V_{RRM}$       | 50          | 100   | 200   | 400   | 600   | 800   | 1000  | V                |
| Working Peak Reverse Voltage   | $V_{RWM}$       |             |       |       |       |       |       |       |                  |
| DC Blocking Voltage  | $V_R$           |             |       |       |       |       |       |       |                  |
| RMS Reverse Voltage  | $V_{R(RMS)}$    | 35          | 70    | 140   | 280   | 420   | 560   | 700   | V                |
| Average Rectified Output Current (Note 1)<br>@ $T_A = 75^\circ\text{C}$  | $I_O$           | 2.0         |       |       |       |       |       |       | A                |
| Non-Repetitive Peak Forward Surge Current<br>8.3ms Single half sine-wave superimposed on rated load (JEDEC Method) | $I_{FSM}$       | 70          |       |       |       |       |       |       | A                |
| Forward Voltage @ $I_F = 2.0\text{A}$  | $V_{FM}$        | 1.0         |       |       |       |       |       |       | V                |
| Peak Reverse Current @ $T_A = 25^\circ\text{C}$<br>At Rated DC Blocking Voltage @ $T_A = 100^\circ\text{C}$        | $I_{RM}$        | 5.0<br>50   |       |       |       |       |       |       | $\mu\text{A}$    |
| Typical Junction Capacitance (Note 2)  | $C_j$           | 20          |       |       |       |       |       |       | pF               |
| Typical Thermal Resistance Junction to Ambient (Note 1)  | $R_{\theta JA}$ | 40          |       |       |       |       |       |       | K/W              |
| Operating Temperature Range  | $T_j$           | -65 to +150 |       |       |       |       |       |       | $^\circ\text{C}$ |
| Storage Temperature Range  | $T_{STG}$       | -65 to +150 |       |       |       |       |       |       | $^\circ\text{C}$ |

#### \*Glass passivated forms are available upon request

Note: 1. Leads maintained at ambient temperature at a distance of 9.5mm from the case  
 2. Measured at 1.0 MHz and Applied Reverse Voltage of 4.0V D.C.

# RL201 – RL207

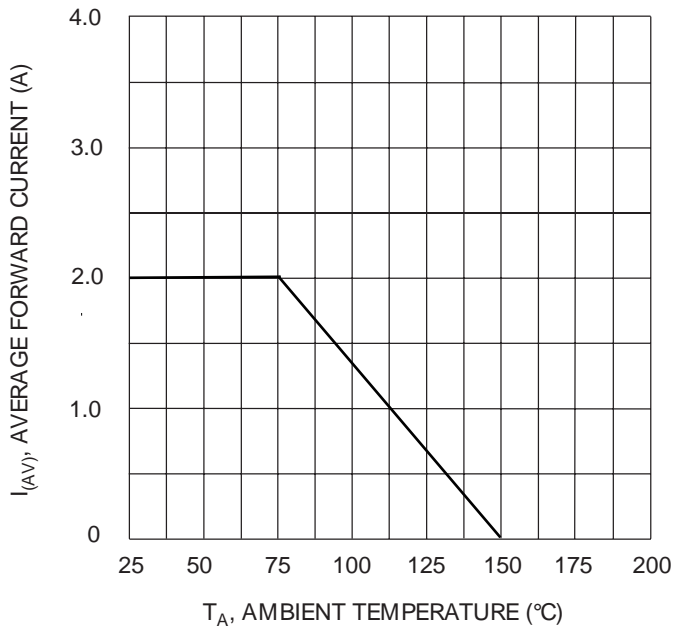


Fig. 1 Forward Current Derating Curve

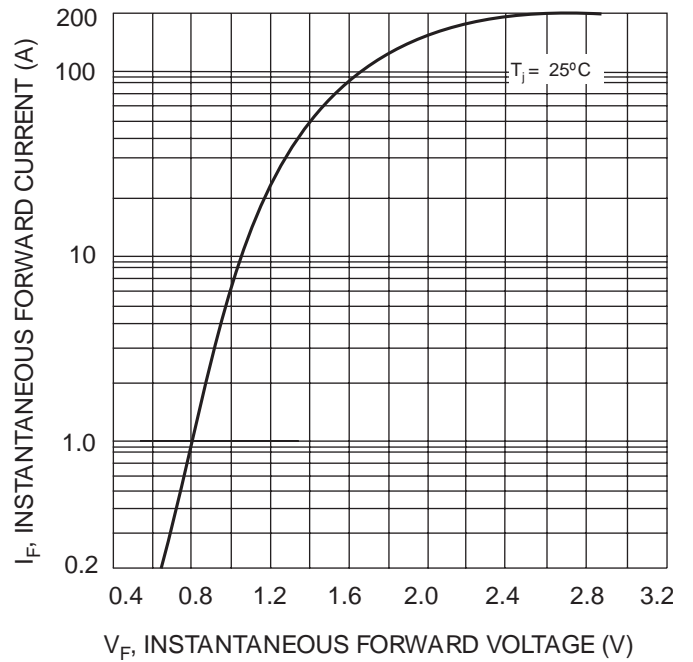


Fig. 2 Typical Forward Characteristics

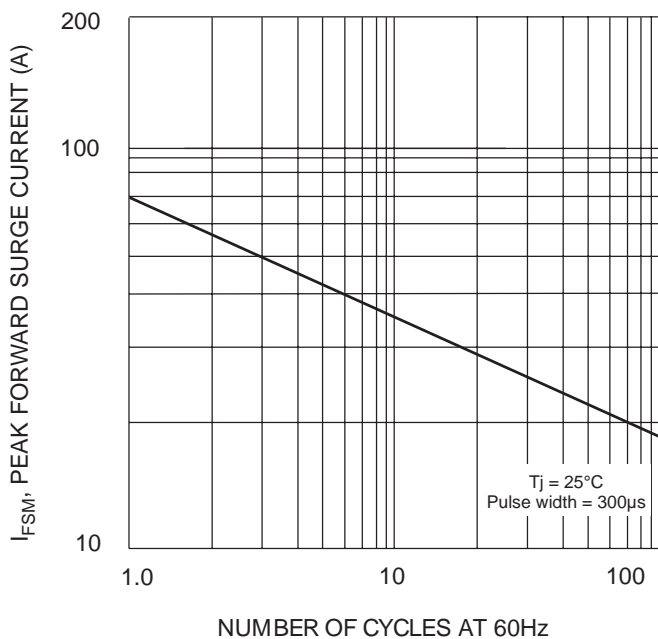


Fig. 3 Maximum Non-Repetitive Surge Current

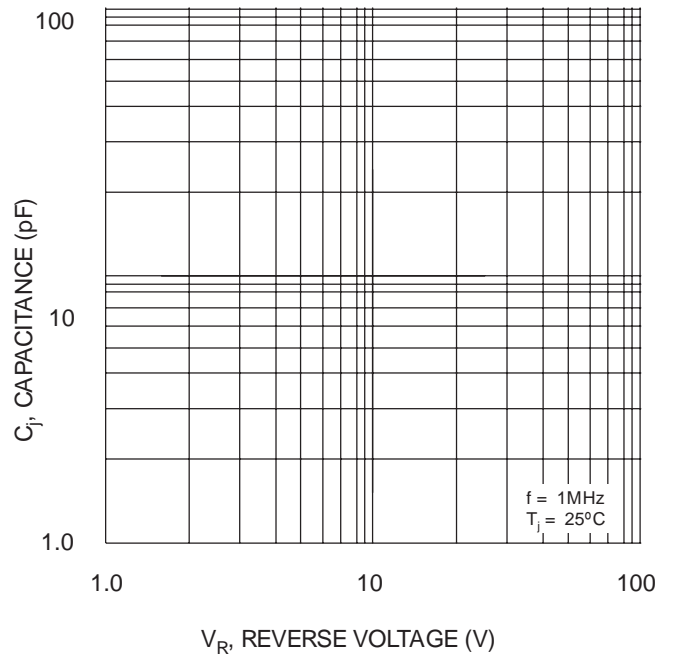


Fig. 4 Typical Junction Capacitance

## X-ON Electronics

Largest Supplier of Electrical and Electronic Components

*Click to view similar products for [Diodes - General Purpose, Power, Switching category:](#)*

*Click to view products by [YFSEMI manufacturer:](#)*

Other Similar products are found below :

[MMBD3004S-13-F](#) [RD0306T-H](#) [BAV17-TR](#) [BAV19-TR](#) [1N3611](#) [NTE156A](#) [NTE574](#) [NTE6244](#) [1SS181-TP](#) [1SS193,LF](#) [1SS400CST2RA](#)  
[SDAA13](#) [SHN2D02FUTW1T1G](#) [LS4151GS08](#) [1N4449](#) [1N456A](#) [1N4934-E3/73](#) [1N914B](#) [1N914BTR](#) [1SS226-TP](#) [RFUH20TB3S](#)  
[D291S45T](#) [BAV300-TR](#) [BAW56DWQ-7-F](#) [BAW75-TAP](#) [MM230L-CAA](#) [IDW40E65D1](#) [JAN1N3600](#) [LL4151-GS18](#) [053684A](#)  
[SMMSD4148T3G](#) [707803H](#) [NSVDAN222T1G](#) [CDSZC01100-HF](#) [LL4150-M-08](#) [1N4454-TR](#) [BAV199E6433HTMA1](#) [BAS28-7](#)  
[BAW56HDW-13](#) [BAS28 TR](#) [VS-HFA04SD60STR-M3](#) [NSVM1MA152WKT1G](#) [RGP30D-E3/73](#) [BAV99TQ-13-F](#) [BAS21DWA-7](#)  
[BAV99HDW-13](#) [NTE6250](#) [NTE582-4](#) [NTE582-6](#) [MMDB30-E28X](#)