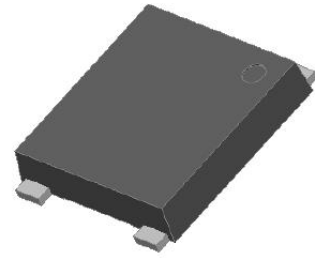


Single Phase 3.0A Surface Mount Glass Passivated Bridge Rectifier

Features

- Glass passivated chip;
- Ideal for automated placement
- High surge current capability
- Low forward voltage drop
- Design for surface mount application

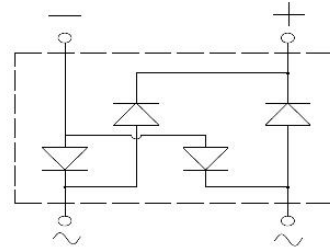


Typical Applications

General purpose use in AC/DC bridge full wave rectification for SMPS, lighting ballaster, adapter, battery charger, home appliances, office equipment, and telecommunication applications.

Mechanical Data

- Package: DBF, Molding compound meets UL 94V-0 flammability rating, RoHS compliant
- Terminals, Tin plated leads, solderable per J-STD-002 and JESD22-B102
- Polarity: As marked on body

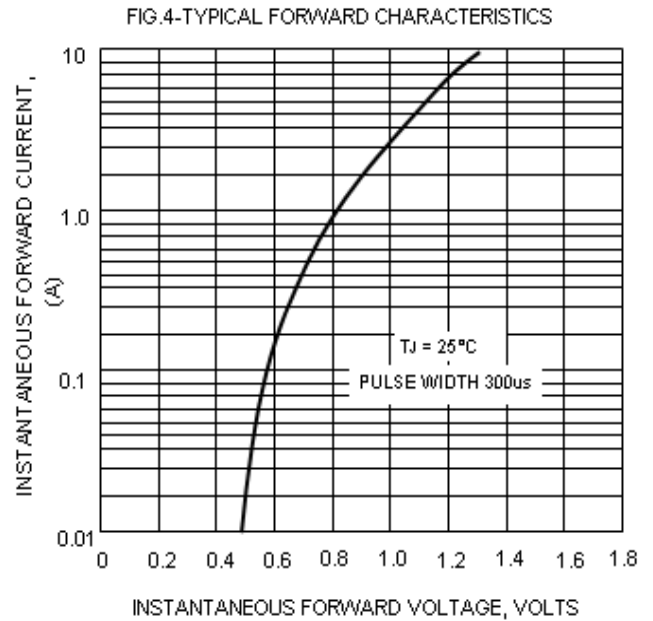
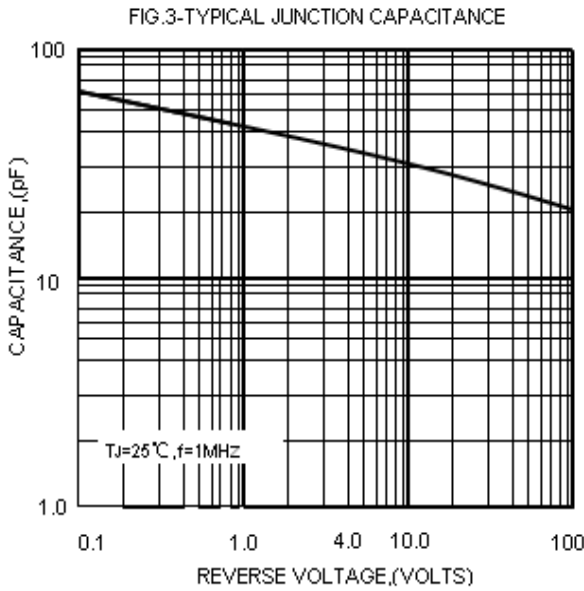
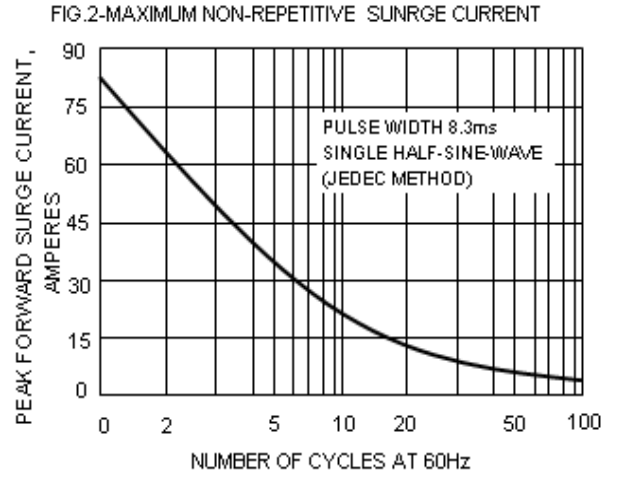
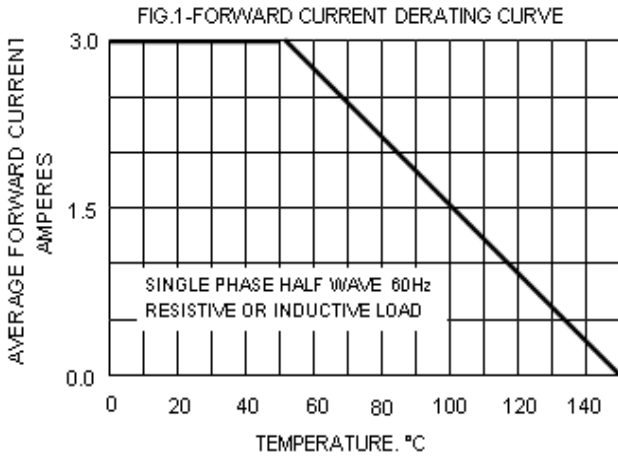


Maximum Ratings and Electrical Characteristics

(Ta=25°C Unless Otherwise Specified)

TYPE NUMBER		SYMBOL	TMBF301	TMBF302	TMBF303	TMBF304	TMBF306	TMBF308	TMBF310	UNITS
Maximum Repetitive Peak Reverse Voltage		VRRM	50	100	200	400	600	800	1000	V
Maximum RMS Voltage		VR(RMS)	35	70	140	280	420	560	720	
Maximum DC Blocking Voltage		VDC	50	100	200	400	600	800	1000	
Maximum Average Forward Rectified Current@60HZ sine wave, R-load TC=70°C		IO(AV)	3							A
Non-Repetitive Peak Forward Surge Current 8.3ms Single half @60HZ, Tj=25°C		IFSM	80							A
Current squared time@1ms≤t≤8.3ms, Tj=25°C, Rating of per diode		I²t	50.2							A²S
Maximum instantaneous forward voltage at @IF=1.5A @IF=3.0A		VFM	1.0							V
			1.1							
Peak Reverse Current At Rated DC Blocking Voltage @TA = 25°C @TA = 125°C		IRM	5							uA
			300							
Typical Thermal Resistance per leg	Between Junction and Ambient	R θ JA	55							°C/W
	Between Junction and Lead	R θ JL	15							
	Between Junction and Case	R θ JC	10							
Operating junction temperature range		TJ	-55 TO 150							°C
Operating and Storage Temperature Range		TSTG	-55 TO 150							°C

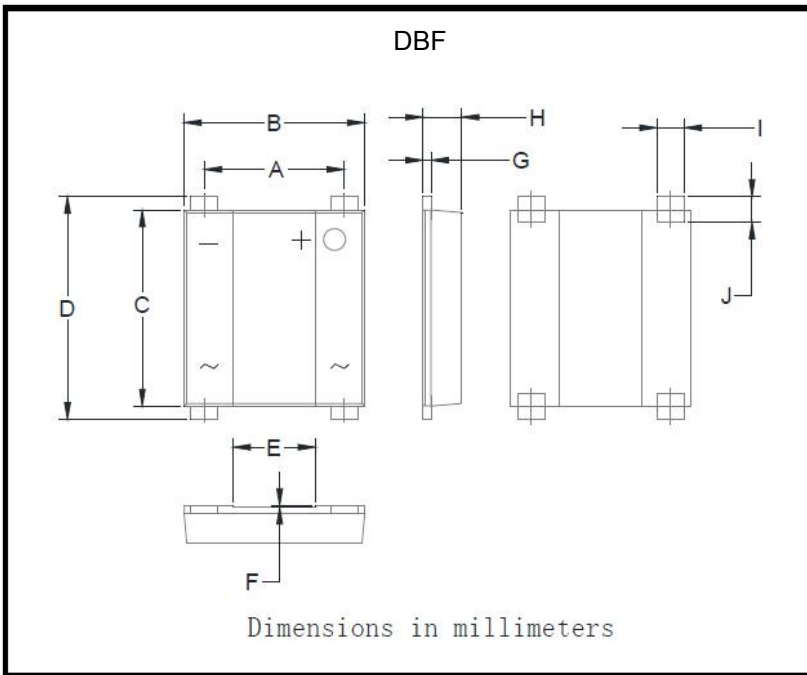
■ 特性曲线 (典型) Characteristics(Typical)



■ Ordering Information (Example)

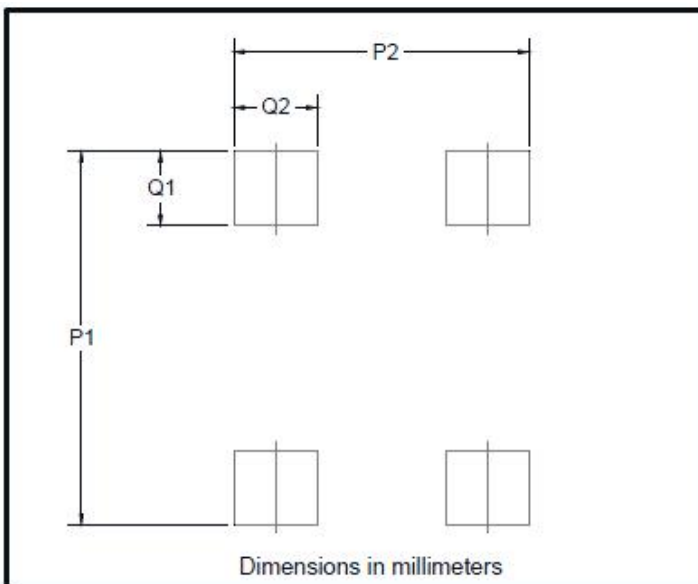
P/N	PACK	MINIMUM PACKAGE(PCS)	INNER BOX QUANTITY(PCS)	CARTON QUANTITY(PCS)	DELIVERY MODE
TMBF301-TMBF310	T/R	3000	6000	42000	13"

■ Outline Dimensions



DBF		
Dim	Min	Max
A	5.00	5.20
B	6.50	6.70
C	7.20	7.40
D	7.90	8.60
E	2.90	3.10
F	0.04	0.08
G	0.25	0.40
H	1.30	1.50
I	0.95	1.15
J	0.70	1.05

■ Suggested pad layout



Dim	Min
P1	9.15
P2	7.10
Q1	1.80
Q2	2.00

X-ON Electronics

Largest Supplier of Electrical and Electronic Components

Click to view similar products for [Bridge Rectifiers](#) category:

Click to view products by [YFSEMI](#) manufacturer:

Other Similar products are found below :

[MB2510](#) [MB252](#) [MB356G](#) [MB358G](#) [MP358-BP](#) [90MT160KPBF](#) [GBJ1504-BP](#) [GBU10B-BP](#) [GBU15J-BP](#) [GBU15K-BP](#) [GBU4A-BP](#)
[GBU4D-BP](#) [GSIB680-E3/45](#) [DB101-BP](#) [DF01](#) [DF10SA-E345](#) [BU1508-E3/45](#) [BU1510-E3/45](#) [KBPC50-10S](#) [RS405GL-BP](#) [26MT120](#)
[G5SBA60-E3/51](#) [GBJ1502-BP](#) [GBU10J-BP](#) [GBU4J-BP](#) [GBU6M](#) [GBU8D-BP](#) [GBU8J-BP](#) [GSIB1520-E3/45](#) [TB102M](#) [MB1510](#) [MB6M-G](#)
[MB86](#) [TL401G](#) [MDA920A2](#) [TU602](#) [TU810](#) [MP501W-BP](#) [MP502-BP](#) [BR1005-BP](#) [BR101-BP](#) [BR84DTP204](#) [BU1010A-E3/51](#) [BU1508-](#)
[E3/51](#) [BU2006-E3/45](#) [BU2008-E3/51](#) [US15KB80R-7000](#) [KBPC25-02](#) [VS-60MT120KPBF](#) [DB105-BP](#)