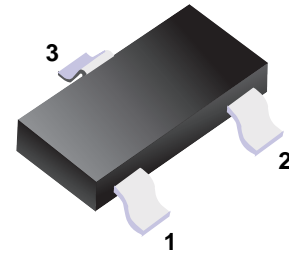


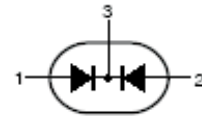
■ **Switching Diode**

■ **Features**

- Small Package
- Low forward voltage : $V_{F(3)} = 0.9\text{ V(Typ.)}$
- Fast Reverse Recovery Time : $t_{rr} = 1.6\text{ ns(Typ.)}$
- Small Total Capacitance : $C_T = 0.9\text{ pF(Typ.)}$



■ **Simplified outline(SOT-23)**



■ **Marking**

Marking	B3
---------	----

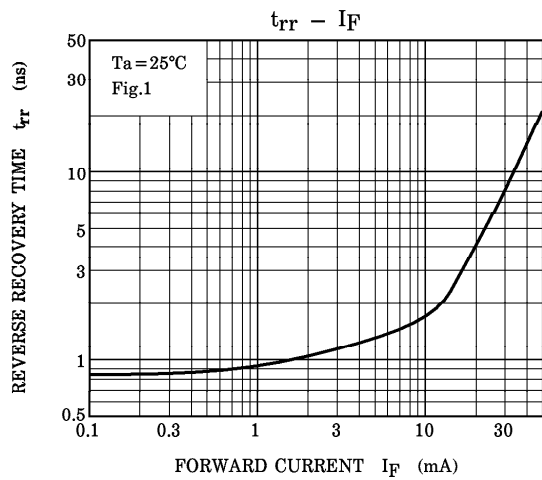
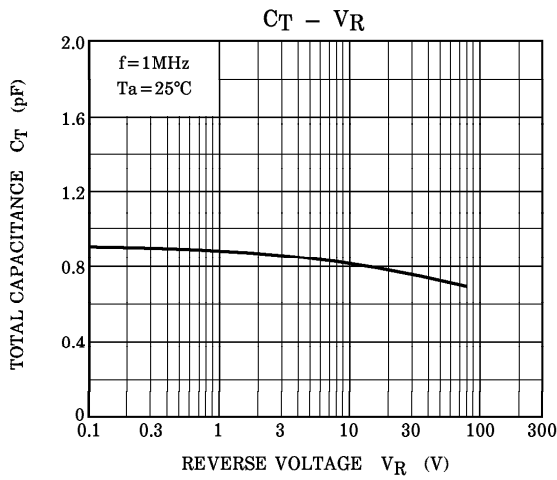
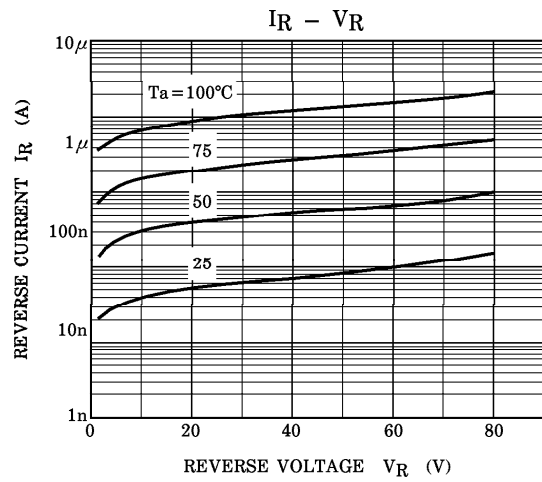
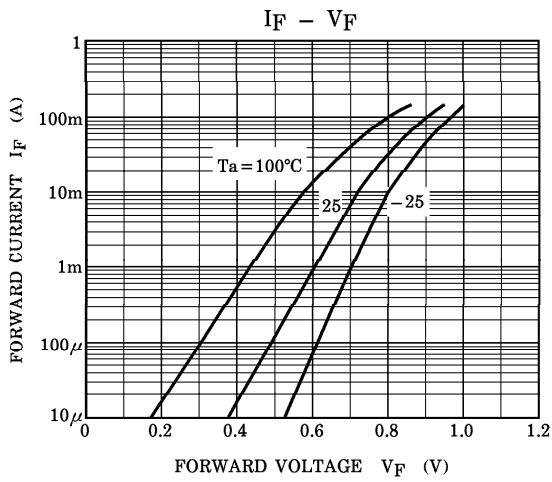
■ **Absolute Maximum Ratings** $T_a = 25^\circ\text{C}$

Parameter	Symbol	Rating	Unit
Peak Reverse voltage	V_{RM}	85	V
DC Blocking Voltage	V_R	80	
Average Rectified Output Current	I_o	100	mA
Peak forward surge current	I_{FM}	300	
Power Dissipation	P_D	150	mW
Junction Temperature	T_J	125	$^\circ\text{C}$
Storage temperature range	T_{stg}	-55 to 150	

■ **Electrical Characteristics** $T_a = 25^\circ\text{C}$

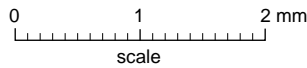
Parameter	Symbol	Test Conditions	Min	Typ	Max	Unit
Reverse breakdown voltage	V_R	$I_R = 100\ \mu\text{A}$	80			V
Forward voltage	V_{F1}	$I_F = 1\ \text{mA}$		0.6		
	V_{F2}	$I_F = 10\ \text{mA}$		0.72		
	V_{F3}	$I_F = 100\ \text{mA}$		0.9	1.2	
Reverse voltage leakage current	I_{R1}	$V_R = 30\ \text{V}$			0.1	μA
	I_{R2}	$V_R = 80\ \text{V}$			0.5	
Capacitance between terminals	C_T	$V_R = 0\ \text{V}, f = 1\ \text{MHz}$		0.9	3	pF
Reverse recovery time	t_{rr}	$I_F = 10\ \text{mA}$		1.6	4	ns

■ Typical Characteristics



Package Outline

SOT-23



DIMENSIONS (mm are the original dimensions)

UNIT	A	A ₁ max.	b _p	c	D	E	e	e ₁	H _E	L _p	Q	v	w
mm	1.1 0.9	0.1	0.48 0.38	0.15 0.09	3.0 2.8	1.4 1.2	1.9	0.95	2.5 2.1	0.45 0.15	0.55 0.45	0.2	0.1

Summary of Packing Options

Package	Packing Description	Packing Quantity	Industry Standard
SOT-23	Tape/Reel, 7" reel	3000	EIA-481-1

X-ON Electronics

Largest Supplier of Electrical and Electronic Components

Click to view similar products for [Diodes - General Purpose, Power, Switching category:](#)

Click to view products by [YFW Electronics manufacturer:](#)

Other Similar products are found below :

[MCL4151-TR3](#) [MMBD3004S-13-F](#) [RD0306T-H](#) [1N3611](#) [NTE156A](#) [NTE574](#) [NTE6244](#) [1SS193,LF](#) [1SS400CST2RA](#) [SDAA13](#)
[SHN2D02FUTW1T1G](#) [LS4151GS08](#) [1N4449](#) [1N456A](#) [1N4934-E3/73](#) [1N914BTR](#) [RFUH20TB3S](#) [D291S45T](#) [BAV300-TR](#) [BAW56DWQ-](#)
[7-F](#) [BAW75-TAP](#) [MM230L-CAA](#) [IDW40E65D1](#) [JAN1N3600](#) [JAN1N4454UR-1](#) [LL4151-GS18](#) [SMMSD4148T3G](#) [BYW95B/A52A](#)
[NSVDAN222T1G](#) [CDSZC01100-HF](#) [LL4150-M-08](#) [1N4454-TR](#) [BAV70HDW-7](#) [BAS28-7](#) [JANTX1N6640](#) [BAW56HDW-13](#) [BAS28 TR](#)
[VS-HFA04SD60STR-M3](#) [NSVM1MA152WKT1G](#) [1SS388-TP](#) [RGP30D-E3/73](#) [VS-8EWF02S-M3](#) [BAV99TQ-13-F](#) [BAV99HDW-13](#)
[MMDB30-E28X](#) [IDP20C65D2XKSA1](#) [LS4148](#) [IDV15E65D2](#) [NSVM1MA152WAT1G](#) [HN4D02JU\(TE85L,F\)](#)