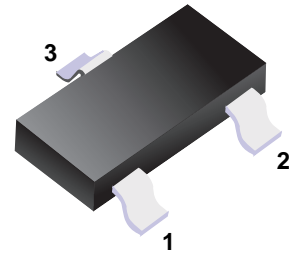
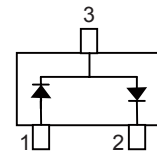


■ Switching Diodes



■ Simplified outline(SOT-23)



■ Features

- Small Package
- Low forward voltage : $V_{F(3)} = 0.9 \text{ V(Typ.)}$
- Fast Reverse Recovery Time : $t_{rr} = 1.6 \text{ ns(Typ.)}$
- Small Total Capacitance : $C_T = 0.9\text{pF(Typ.)}$

■ Absolute Maximum Ratings $T_a = 25^\circ\text{C}$

Parameter	Symbol	Rating	Unit
Peak Reverse voltage	V_{RM}	85	V
DC Blocking Voltage	V_R	80	
Average Rectified Output Current	I_o	100	mA
Peak forward surge current	I_{FM}	300	
Power Dissipation	P_D	150	mW
Junction Temperature	T_J	150	$^\circ\text{C}$
Storage temperature range	T_{stg}	-55 to 150	

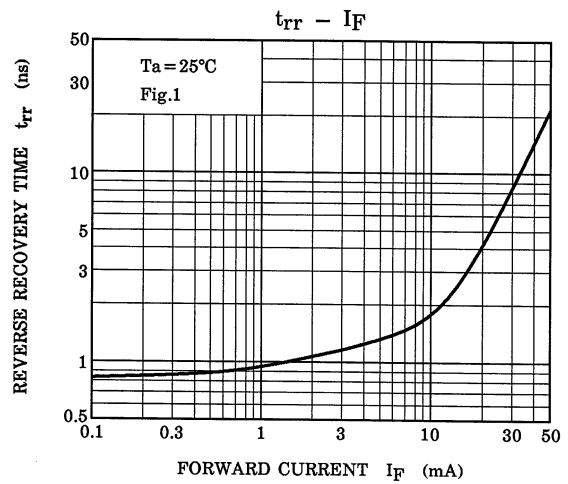
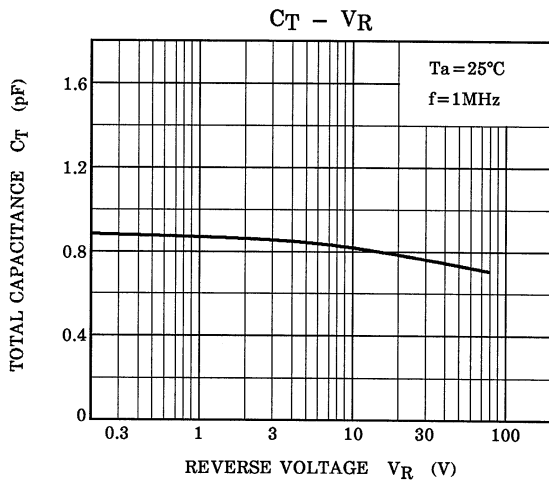
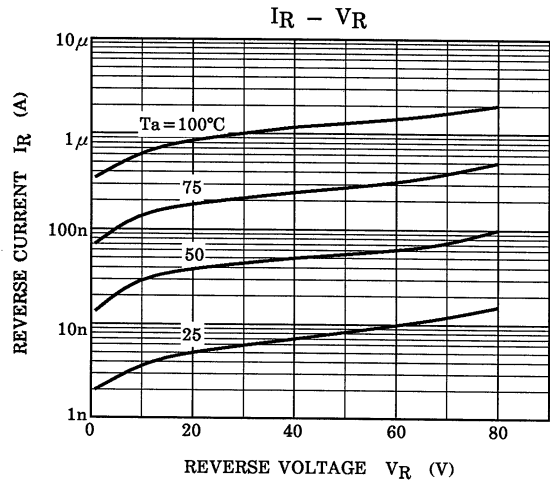
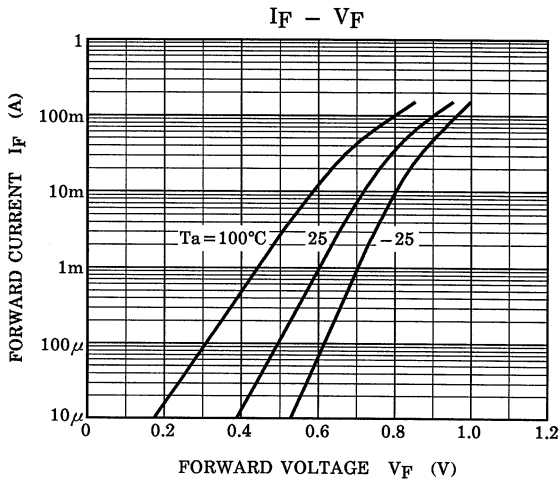
■ Electrical Characteristics $T_a = 25^\circ\text{C}$

Parameter	Symbol	Test Conditions	Min	Typ	Max	Unit
Reverse breakdown voltage	V_R	$I_R = 100 \text{ uA}$	80			V
Forward voltage	V_{F1}	$I_F = 1 \text{ mA}$		0.6		
	V_{F2}	$I_F = 10\text{mA}$		0.72		
	V_{F3}	$I_F = 100 \text{ mA}$		0.9	1.2	
Reverse voltage leakage current	I_{R1}	$V_R = 30 \text{ V}$			0.1	uA
	I_{R2}	$V_R = 80 \text{ V}$			0.5	
Capacitance between terminals	C_T	$V_R = 0 \text{ V}, f = 1 \text{ MHz}$		0.9	3	pF
Reverse recovery time	t_{rr}	$I_F = 10\text{mA}$		1.6	4	ns

■ Marking

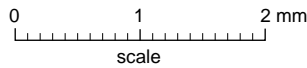
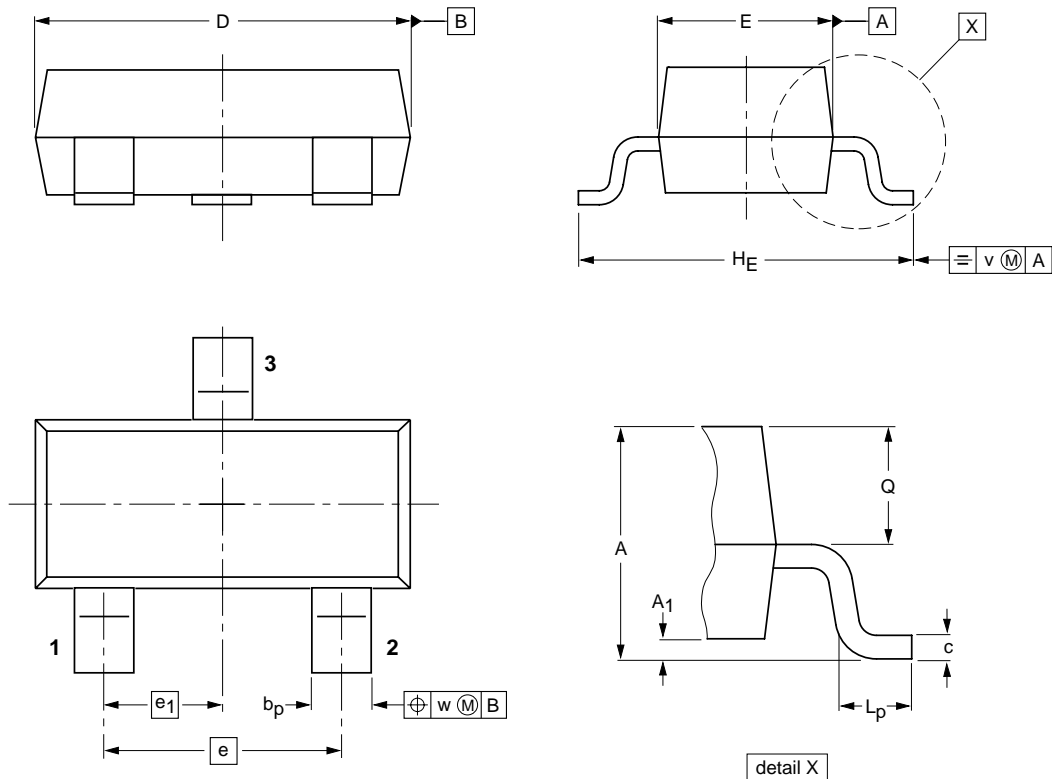
NO.	1SS226
Marking	C3

■ Typical Characteristics



Package Outline

SOT-23



DIMENSIONS (mm are the original dimensions)

UNIT	A	A ₁ max.	b _p	c	D	E	e	e ₁	H _E	L _p	Q	v	w
mm	1.1 0.9	0.1	0.48 0.38	0.15 0.09	3.0 2.8	1.4 1.2	1.9	0.95	2.5 2.1	0.45 0.15	0.55 0.45	0.2	0.1

Summary of Packing Options

Package	Packing Description	Packing Quantity	Industry Standard
SOT-23	Tape/Reel, 7" reel	3000	EIA-481-1

X-ON Electronics

Largest Supplier of Electrical and Electronic Components

Click to view similar products for [Diodes - General Purpose, Power, Switching category:](#)

Click to view products by [YFW Electronics manufacturer:](#)

Other Similar products are found below :

[MMBD3004S-13-F](#) [1N3611](#) [NTE156A](#) [NTE6244](#) [1SS400CST2RA](#) [SDAA13](#) [SHN2D02FUTW1T1G](#) [1N4449](#) [1N456A](#) [1N914BTR](#)
[D291S45T](#) [BAS 16-02L E6327](#) [BAS 16-02V H6327](#) [BAS 21U E6327](#) [BAS 28 E6327](#) [BAW56DWQ-7-F](#) [BAW75-TAP](#) [MM230L-CAA](#)
[IDW40E65D1](#) [JAN1N3600](#) [JAN1N4454UR-1](#) [SMMSD4148T3G](#) [BYW95B/A52A](#) [NSVDAN222T1G](#) [CDSZC01100-HF](#) [BAV70HDW-7](#)
[BAS28-7](#) [JANTX1N6640](#) [BAW56HDW-13](#) [BAS28 TR](#) [VS-HFA04SD60STR-M3](#) [1SS388-TP](#) [BAV99TQ-13-F](#) [BAV99HDW-13](#) [1N4004](#)
[MMDB30-E28X](#) [LS4148](#) [IDV15E65D2](#) [W0503RH200S0L](#) [W0503SH200S0L](#) [M0268SJ200NLF](#) [M0268RJ200NLF](#) [S3MBF](#) [US1J](#)
[DAN217U-TP](#) [SHV-06JNS-Q](#) [IDW30C65D1](#) [IDW80C65D1](#) [VS-HFA30TA60CSR-M3](#) [M1MA152WAT1](#)