

**Plastic-Encapsulate Diodes**

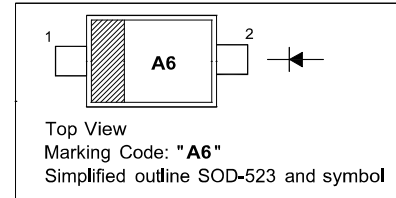
Switching Diode

**FEATURES**

- High-Speed Switching Applications
- Lead Finish: 100% Matte Sn(Tin)
- Qualified Reflow Temperature: 260°C
- Extremely Small SOD-523 Package

**PINNING**

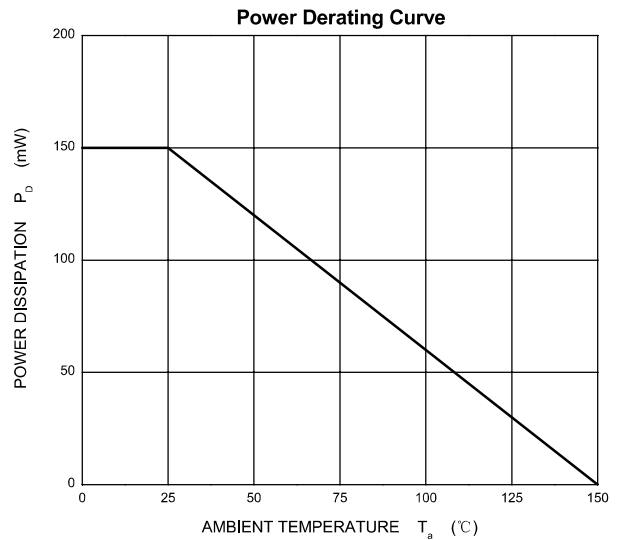
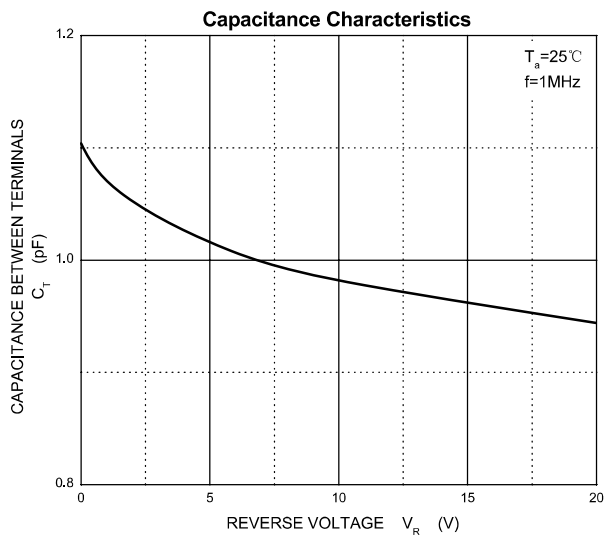
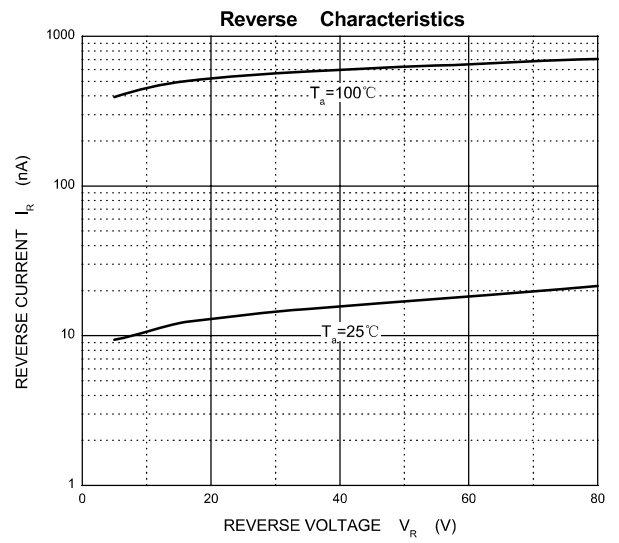
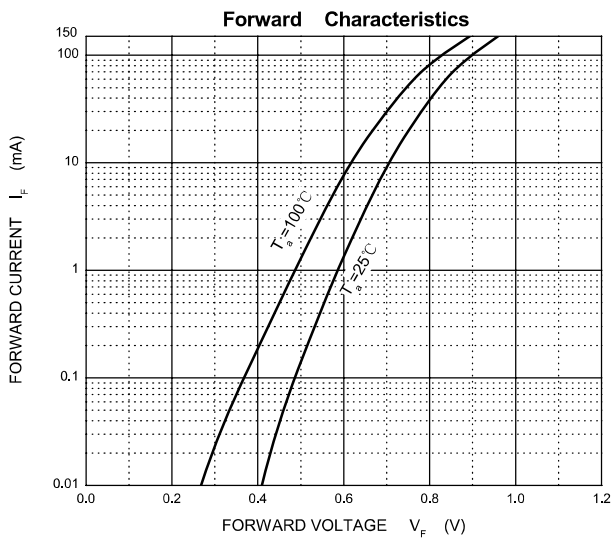
PIN	DESCRIPTION
1	Cathode
2	Anode


**MARKING: A6**
**Maximum Ratings and Electrical Characteristics, Single Diode @Ta=25°C**

Parameter	Symbol	Limit	Unit
DC Reverse Voltage	$V_R$	75	V
Forward Current	$I_F$	200	mA
Pak Forward Surge Current	$I_{FM(surge)}$	500	mA
Total Device Dissipation	$P_D$	150	mW
Thermal Resistance Junction to Ambient	$R_{\theta JA}$	833	°C/W
Junction and Storage Temperature	$T_j, T_{stg}$	150	°C

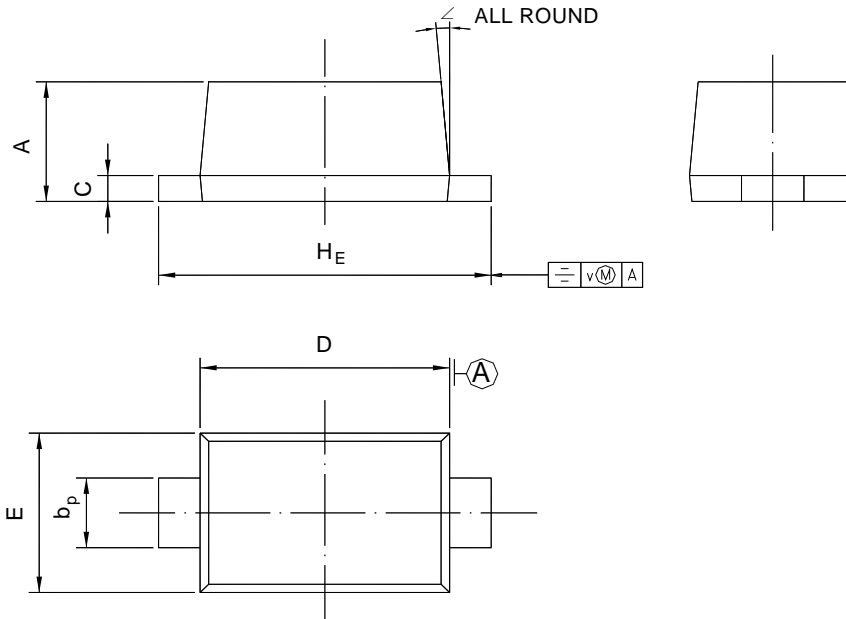
**Electrical Ratings @Ta=25°C**

Parameter	Symbol	Min	Typ	Max	Unit	Conditions
Reverse breakdown voltage	$V_{(BR)}$	75				$I_R=100\mu A$
Forward voltage	$V_{F1}$			715	mV	$I_F=1mA$
	$V_{F2}$			855		$I_F=10mA$
	$V_{F3}$			1000		$I_F=50mA$
	$V_{F4}$			1250		$I_F=150mA$
Reverse recovery Time	$t_{rr}$			6.0	ns	$I_F=I_R=10mA_{dc}, R_L=50\Omega$
Reverse current	$I_R$			1.0	$\mu A$	$V_R=75V$
Forward recovery voltage	$V_{FR}$			1.75	V	$I_F=10mA, t_r=20ns$
Diode capacitance	$C_D$			2.0	pF	$V_R=0V, f=1MHz$
Stored charge	$Q_S$			45	pC	$I_F=10mA, V_R=5.0V, R_L=500\Omega$



**Package Outline SOD-523**

Plastic surface mounted package; 2 leads



UNIT	A	$b_p$	C	D	E	$H_E$	V	$\angle$
mm	0.70 0.60	0.4 0.3	0.135 0.100	1.25 1.15	0.85 0.75	1.7 1.5	0.1	$5^\circ$

**Summary of Packing Options**

Package	Packing Description	Packing Quantity	Industry Standard
SOD-523	Tape/Reel, 7" reel	3000	EIA-481-1

## X-ON Electronics

Largest Supplier of Electrical and Electronic Components

*Click to view similar products for* [Diodes - General Purpose, Power, Switching category:](#)

*Click to view products by* [YFW Electronics manufacturer:](#)

Other Similar products are found below :

[MCL4151-TR3](#) [MMBD3004S-13-F](#) [RD0306T-H](#) [1N3611](#) [NTE156A](#) [NTE574](#) [NTE6244](#) [1SS193,LF](#) [1SS400CST2RA](#) [SDAA13](#)  
[SHN2D02FUTW1T1G](#) [LS4151GS08](#) [1N4449](#) [1N456A](#) [1N4934-E3/73](#) [1N914BTR](#) [RFUH20TB3S](#) [D291S45T](#) [BAV300-TR](#) [BAW56DWQ-](#)  
[7-F](#) [BAW56M3T5G](#) [BAW75-TAP](#) [MM230L-CAA](#) [IDW40E65D1](#) [JAN1N3600](#) [JAN1N4454UR-1](#) [LL4151-GS18](#) [SMMSD4148T3G](#)  
[BYW95B/A52A](#) [NSVDAN222T1G](#) [CDSZC01100-HF](#) [LL4150-M-08](#) [1N4454-TR](#) [BAV70HDW-7](#) [BAS28-7](#) [JANTX1N6640](#) [BAW56HDW-](#)  
[13](#) [BAS28 TR](#) [VS-HFA04SD60STR-M3](#) [NSVM1MA152WKT1G](#) [1SS388-TP](#) [RGP30D-E3/73](#) [VS-8EWF02S-M3](#) [BAV99TQ-13-F](#)  
[BAV99HDW-13](#) [MMDB30-E28X](#) [IDP20C65D2XKSA1](#) [LS4148](#) [IDV15E65D2](#) [NSVM1MA152WAT1G](#)