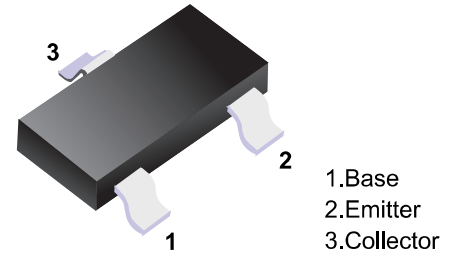


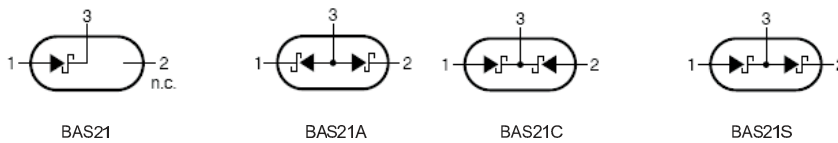
■ **Switching Diodes**

■ **Features**

- Fast Switching Speed
- Surface Mount Package Ideally Suited for Automatic Insertion
- High Conductance
- For General Purpose Switching Applications



■ **Simplified outline(SOT-23)**



■ **Absolute Maximum Ratings Ta = 25°C**

Parameter	Symbol	Rating	Unit
Reverse Voltage	V _R	250	V
Forward Current	I _F	200	mA
Power Dissipation	P _D	200	mW
Operating Junction Temperature Range	T _J	-55 to +150	°C
Storage Temperature Range	T _{stg}	-55 to +150	°C

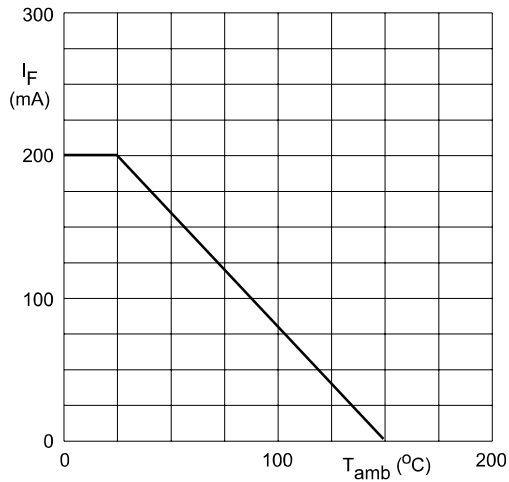
■ **Electrical Characteristics Ta = 25°C**

Parameter	Symbol	Testconditions	Min	Typ	Max	Unit
Reverse Breakdown Voltage	V(BR)	I _R =100 μ A	250			V
Forward Voltage	V _F	I _F =100mA I _F =200mA			1.0 1.25	V
Reverse Leakage	I _R	V _R =200V			100	nA
Junction Capacitance	C _j	V _R =0V, f=1.0MHz			5.0	pF
Reverse Recover Time	T _{rr}				50	nS

■ **Marking**

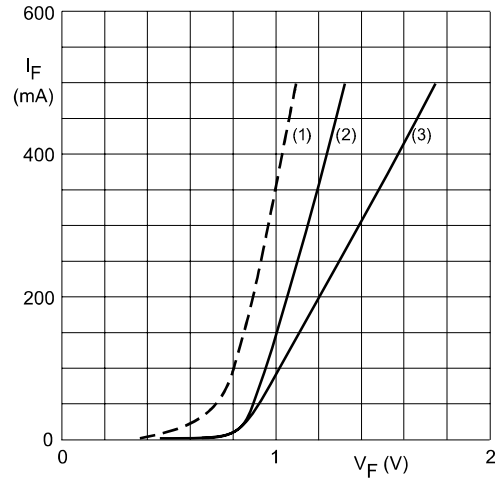
NO.	BAS21	BAS21A	BAS21C	BAS21S
Marking	JS	JS2	JS3	JS4

■ Typical Characteristics



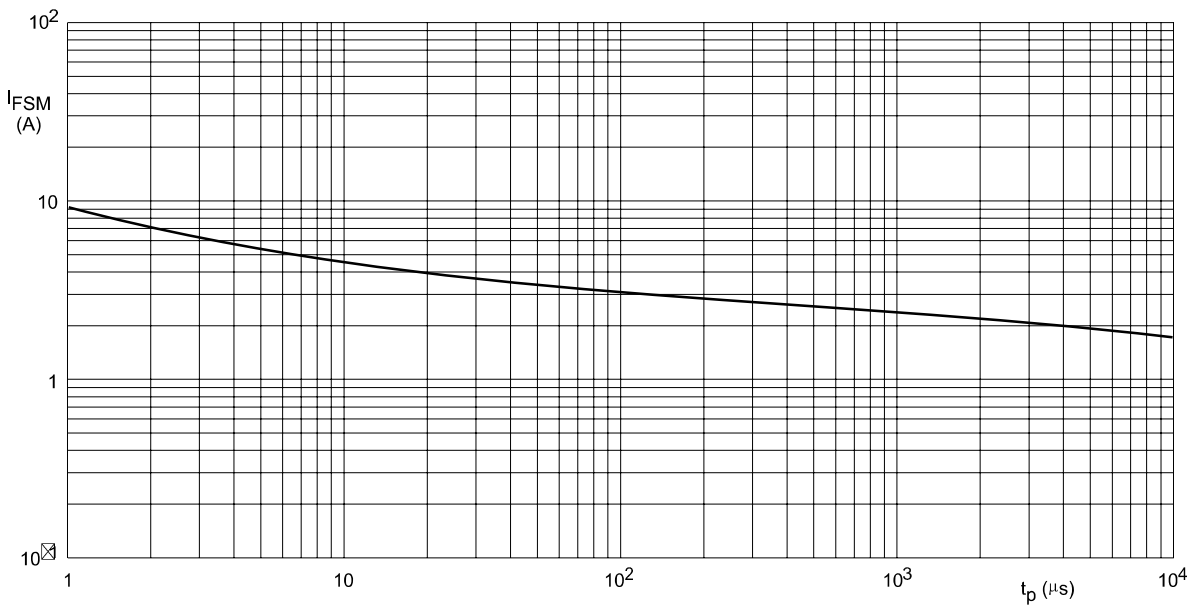
Device mounted on an FR4 printed-circuit board.

Fig.1 Maximum permissible continuous forward current as a function of ambient temperature.



- (1) $T_j = 150$ °C; typical values.
- (2) $T_j = 25$ °C; typical values.
- (3) $T_j = 25$ °C; maximum values.

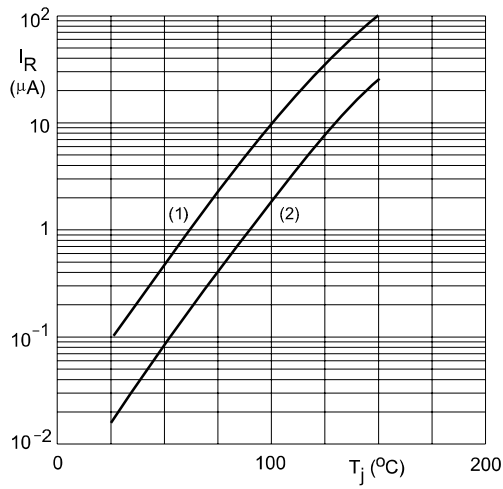
Fig.2 Forward current as a function of forward voltage.



Based on square wave currents.
 $T_j = 25$ °C prior to surge.

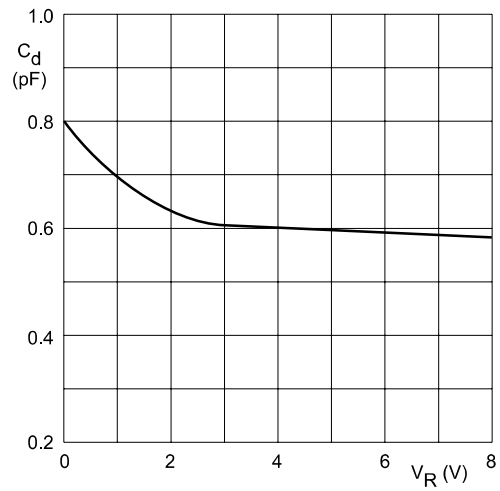
Fig.3 Maximum permissible non-repetitive peak forward current as a function of pulse duration.

■ Typical Characteristics



- (1) $V_R = V_{Rmax}$; maximum values.
- (2) $V_R = V_{Rmax}$; typical values.

Fig.5 Reverse current as a function of junction temperature.



$f = 1 \text{ MHz}; T_j = 25 \text{ °C}.$

Fig.6 Diode capacitance as a function of reverse voltage; typical values.

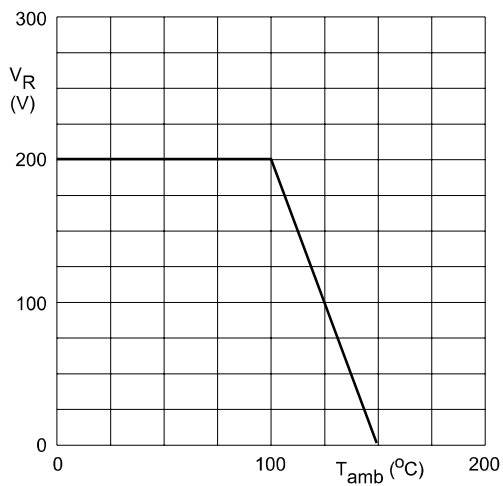
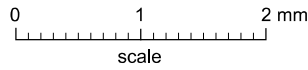
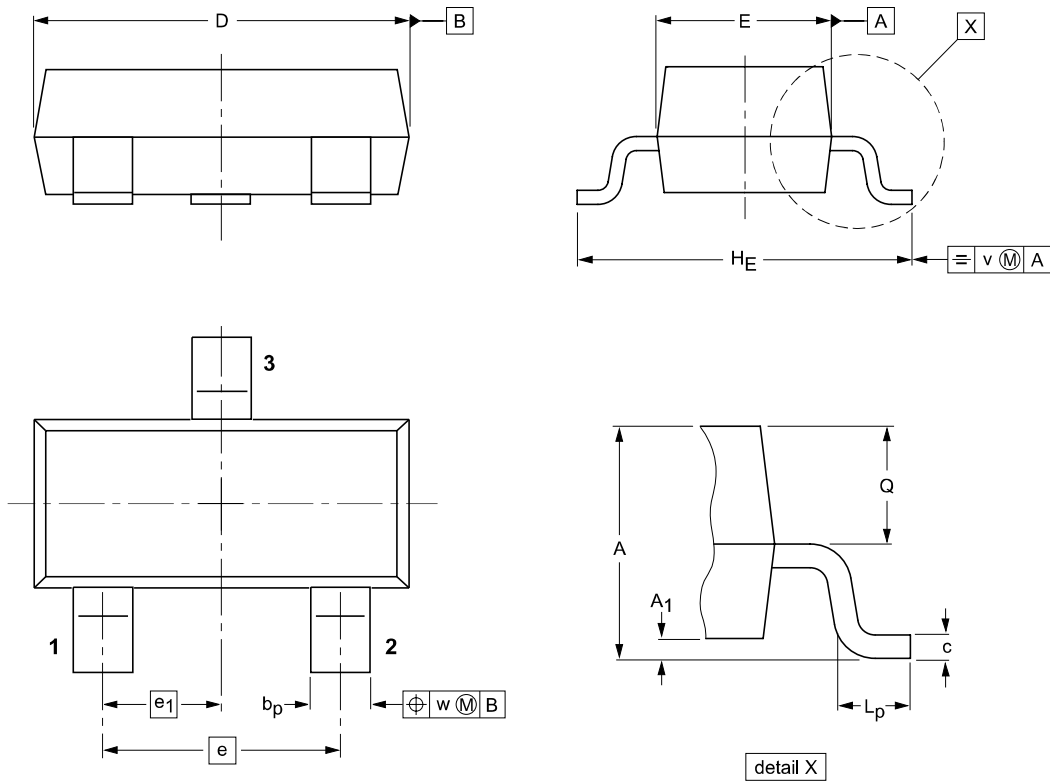


Fig.7 Maximum permissible continuous reverse voltage as a function of the ambient temperature.

Package Outline

SOT-23



DIMENSIONS (mm are the original dimensions)

UNIT	A	A ₁ max.	b _p	c	D	E	e	e ₁	H _E	L _p	Q	v	w
mm	1.1 0.9	0.1	0.48 0.38	0.15 0.09	3.0 2.8	1.4 1.2	1.9	0.95	2.5 2.1	0.45 0.15	0.55 0.45	0.2	0.1

Summary of Packing Options

Package	Packing Description	Packing Quantity	Industry Standard
SOT-23	Tape/Reel, 7" reel	3000	EIA-481-1

X-ON Electronics

Largest Supplier of Electrical and Electronic Components

Click to view similar products for [Diodes - General Purpose, Power, Switching category:](#)

Click to view products by [YFW Electronics manufacturer:](#)

Other Similar products are found below :

[MCL4151-TR3](#) [MMBD3004S-13-F](#) [RD0306T-H](#) [1N3611](#) [NTE156A](#) [NTE574](#) [NTE6244](#) [1SS193,LF](#) [1SS400CST2RA](#) [SDAA13](#)
[SHN2D02FUTW1T1G](#) [LS4151GS08](#) [1N4449](#) [1N456A](#) [1N4934-E3/73](#) [1N914BTR](#) [D291S45T](#) [BAV300-TR](#) [BAW56DWQ-7-F](#) [BAW75-](#)
[TAP](#) [MM230L-CAA](#) [IDW40E65D1](#) [JAN1N3600](#) [JAN1N4454UR-1](#) [LL4151-GS18](#) [SMMSD4148T3G](#) [BYW95B/A52A](#) [NSVDAN222T1G](#)
[CDSZC01100-HF](#) [LL4150-M-08](#) [1N4454-TR](#) [BAV70HDW-7](#) [BAS28-7](#) [JANTX1N6640](#) [BAW56HDW-13](#) [BAS28 TR](#) [VS-](#)
[HFA04SD60STR-M3](#) [NSVM1MA152WKT1G](#) [1SS388-TP](#) [RGP30D-E3/73](#) [VS-8EWF02S-M3](#) [BAV99TQ-13-F](#) [BAV99HDW-13](#)
[MMDB30-E28X](#) [IDP20C65D2XKSA1](#) [LS4148](#) [IDV15E65D2](#) [NSVM1MA152WAT1G](#) [HN4D02JU\(TE85L,F\)](#) [MMD820-C12](#)