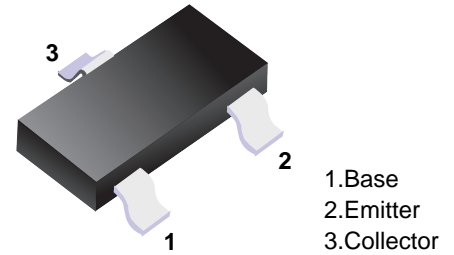


■ PNP Transistors



■ Simplified outline(SOT-23)

■ Features

- Ideally suited for automatic insertion
- Epitaxial planar die construction
- Complementary NPN type available(BC817)

■ Absolute Maximum Ratings Ta = 25°C

Parameter	Symbol	Rating	Unit
Collector - Base Voltage	V _{CB0}	-50	V
Collector - Emitter Voltage	V _{CE0}	-45	
Emitter - Base Voltage	V _{EB0}	-5	
Collector Current - Continuous	I _c	-0.5	A
Collector Power Dissipation	P _c	0.3	W
Junction Temperature	T _J	150	°C
Storage Temperature range	T _{stg}	-55 to 150	

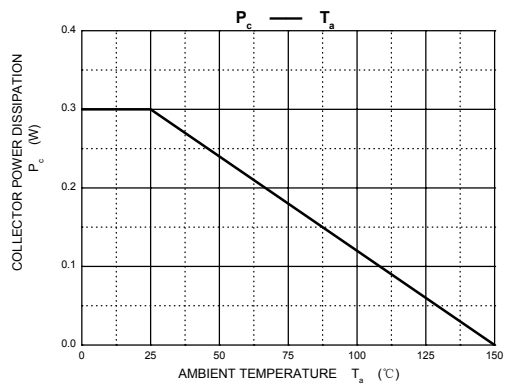
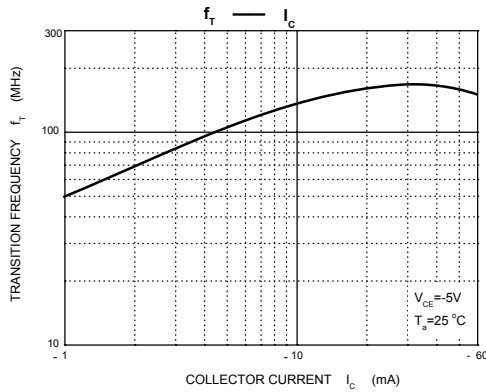
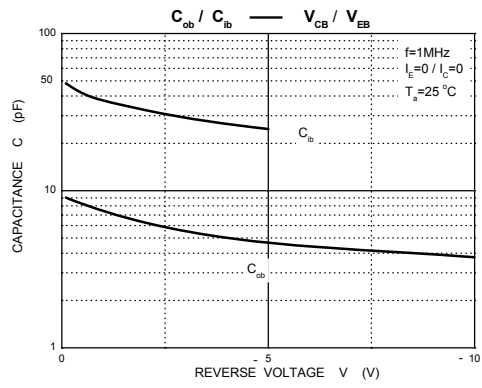
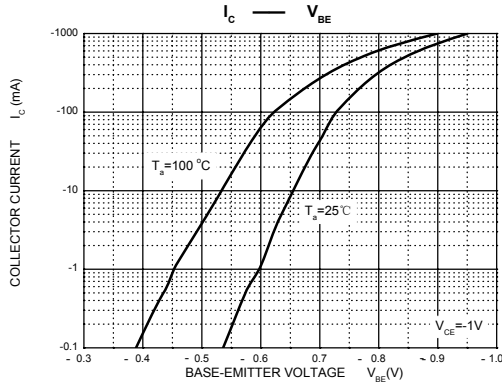
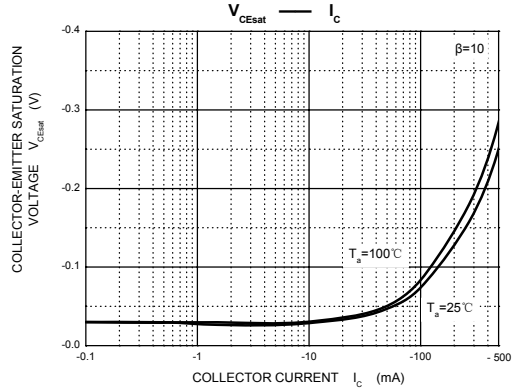
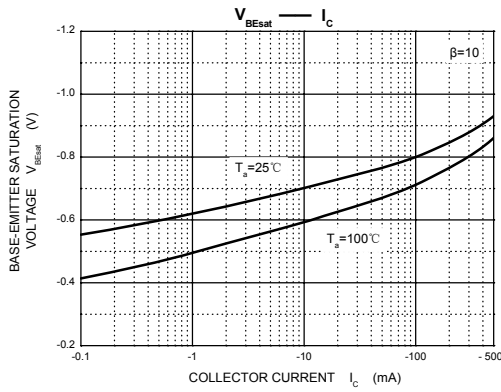
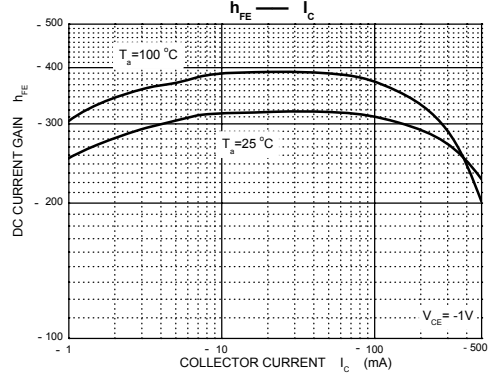
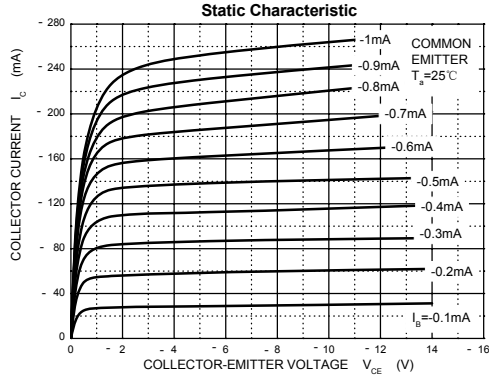
■ Electrical Characteristics Ta = 25°C

Parameter	Symbol	Test Conditions	Min	Typ	Max	Unit
Collector- base breakdown voltage	V _{CB0}	I _c = -100 uA, I _E =0	-50			V
Collector- emitter breakdown voltage	V _{CE0}	I _c = -10 mA, I _B =0	-45			
Emitter - base breakdown voltage	V _{EB0}	I _E = -100 uA, I _c =0	-5			
Collector-base cut-off current	I _{CB0}	V _{CB} = -45 V, I _E =0			-0.1	uA
Collector- emittercut-off current	I _{CE0}	V _{CE} =- 40 V, I _B =0			-0.2	
Emitter cut-off current	I _{EB0}	V _{EB} = -4V, I _c =0			-0.1	
Collector-emitter saturation voltage	V _{CE(sat)}	I _c =-500 mA, I _B =- 50mA			-0.7	V
Base - emitter saturation voltage	V _{BE(sat)}	I _c = -500 mA, I _B = -50mA			-1.2	
DC current gain	h _{fe} (1)	V _{CE} = -1V, I _c = -100mA	100		630	
	h _{fe} (2)	V _{CE} = -1V, I _c = -500mA	40			
Transition frequency	f _t	V _{CE} = -5V, I _c = -10mA,f=100MHz	100			MHz

■ Classification of h_{fe}(1)

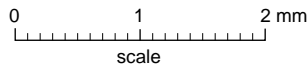
Rank	BC807-16	BC807-25	BC807-40
Range	100-250	160-400	250-630
Marking	5A	5B	5C

■ Typical Characteristics



Package Outline

SOT-23



DIMENSIONS (mm are the original dimensions)

UNIT	A	A ₁ max.	b _p	c	D	E	e	e ₁	H _E	L _p	Q	v	w
mm	1.1 0.9	0.1	0.48 0.38	0.15 0.09	3.0 2.8	1.4 1.2	1.9	0.95	2.5 2.1	0.45 0.15	0.55 0.45	0.2	0.1

Summary of Packing Options

Package	Packing Description	Packing Quantity	Industry Standard
SOT-23	Tape/Reel, 7" reel	3000	EIA-481-1

X-ON Electronics

Largest Supplier of Electrical and Electronic Components

Click to view similar products for [Bipolar Transistors - BJT category](#):

Click to view products by [YFW Electronics manufacturer](#):

Other Similar products are found below :

[BC559C](#) [MCH4017-TL-H](#) [MMBT-2369-TR](#) [BC546/116](#) [NJVMJD148T4G](#) [NTE16](#) [NTE195A](#) [IMX9T110](#) [2N4401-A](#) [2N4403](#) [2N6728](#)
[2SA1419T-TD-H](#) [2SA2126-E](#) [2SB1204S-TL-E](#) [FMC5AT148](#) [2N2369ADCSM](#) [2N2907A](#) [2N3904-NS](#) [2N5769](#) [2SC4618TLN](#) [CPH6501-](#)
[TL-E](#) [MCH4021-TL-E](#) [Jantx2N5416](#) [US6T6TR](#) [BAX18/A52R](#) [BC556/112](#) [IMZ2AT108](#) [MMST8098T146](#) [UMX21NTR](#) [MCH6102-TL-E](#)
[TTA1452B,S4X\(S](#) [2N3879](#) [NTE13](#) [NTE282](#) [NTE323](#) [NTE350](#) [NTE81](#) [JANTX2N2920L](#) [JANTX2N3735](#) [JANSR2N2222AUB](#)
[CMLT3946EG TR](#) [SNSS40600CF8T1G](#) [CMLT3906EG TR](#) [GRP-DATA-JANS2N2907AUB](#) [GRP-DATA-JANS2N2222AUA](#)
[MMDT3946FL3-7](#) [2N4240](#) [JANS2N3019](#) [MSB30KH-13](#) [2N2221AUB](#)