

15 A GLASS PASSIVATED BRIDGE RECTIFIER

Reverse Voltage - 100 to 1000 V

Forward Current – 15 A

Features

- ✦ Glass passivated die construction
- ✦ Low forward voltage drop
- ✦ High current capability
- ✦ High surge current capability
- ✦ Plastic material-UL flammability 94V-0
- ✦ Lead free in comply with EU RoHS 2011/65/EU directives

Mechanical Data

- ✦ Case: GBPC, molded plastic
- ✦ Terminals: Plated Leads Solderable per MIL-STD-202, Method 208
- ✦ Polarity: As Marked on Case
- ✦ Mounting Position: Any
- ✦ Marking: Type Number
- ✦ Lead Free: For RoHS / Lead Free Version

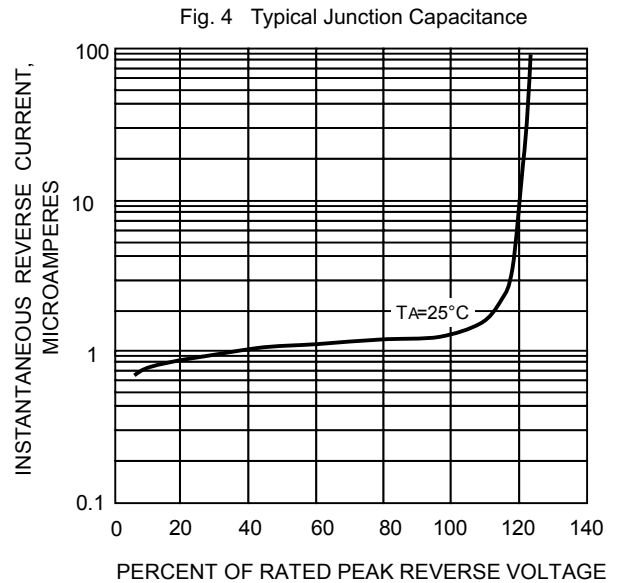
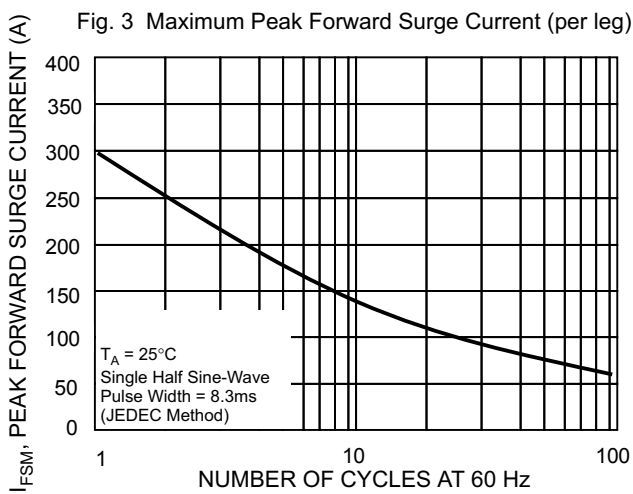
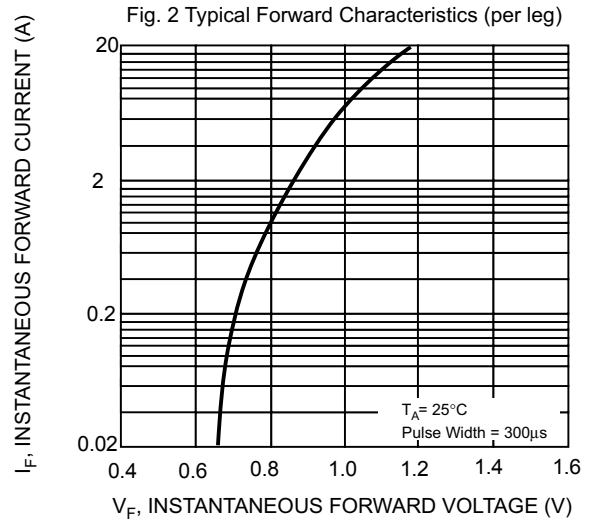
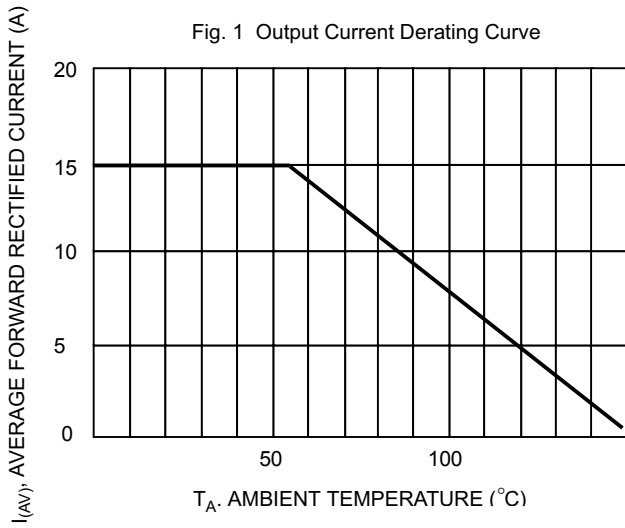


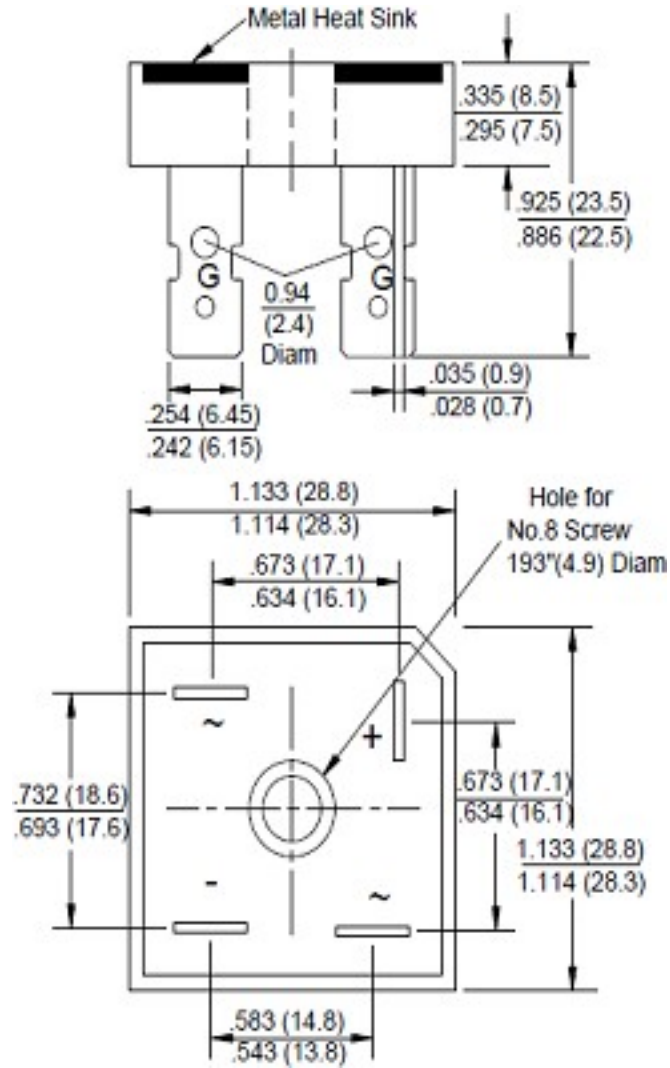
Maximum Ratings and Electrical characteristics

Ratings at 25 °C ambient temperature unless otherwise specified.

Parameter	Symbols	GBPC 1501	GBPC 1502	GBPC 1504	GBPC 1506	GBPC 1508	GBPC 1510	Units
Peak Repetitive Reverse Voltage	V_{RRM}	100	200	400	600	800	1000	V
Working Peak Reverse Voltage	V_{RWM}	70	140	280	420	560	700	V
DC Blocking Voltage	V_{RMS}	100	200	400	600	800	1000	V
Average Rectified Output Current (Note1) @TA=55 °C	$I_{(AV)}$	15.0						A
Non-Repetitive Peak Forward Surge Current 8.3ms Single half sine-wave superimposed on rated load (JEDEC Method)	I_{FSM}	300						A
Forward Voltage per element @IF =7.5A	V_F	1.1						v
Peak Reverse Current @TA=25°C At Rated DC Blocking Voltage @TA=125°C	I_R	5.0 500						μA
Typical Junction Capacitance per leg	C_J	300						pF
Typical Thermal Resistance per leg (Note 2)	$R_{\theta JL}$	2.2						°C/W
Operating and Storage Temperature Range	T_j, T_{stg}	-55 ~ +150						°C

1. Mounted on glass epoxy PC board with 1.3mm² solder pad.
2. Measured at 1.0 MHz and applied reverse voltage of 4.0V D.C.





Summary of Packing Options

Package	Packing Description	Packing Quantity	Industry Standard
GBPC	BOX	50	EIA-481-1

X-ON Electronics

Largest Supplier of Electrical and Electronic Components

Click to view similar products for [Bridge Rectifiers](#) category:

Click to view products by [YFW Electronics](#) manufacturer:

Other Similar products are found below :

[MB2510](#) [MB252](#) [MB356G](#) [MB358G](#) [GBJ1504-BP](#) [GBU10B-BP](#) [GBU15K-BP](#) [GBU4A-BP](#) [GBU4D-BP](#) [DB101-BP](#) [DF01](#) [DF10SA-E345](#)
[KBPC50-10S](#) [RS405GL-BP](#) [GBJ1502-BP](#) [GBU6M](#) [TB102M](#) [MB1510](#) [MB86](#) [TL401G](#) [MDA920A2](#) [TU602](#) [TU810](#) [MP5010W-BP](#)
[MP501W-BP](#) [MP502-BP](#) [KBPC25-02](#) [VBO160-12NO7](#) [VS-110MT120KPBF](#) [VS-60MT80KPBF](#) [DB105-BP](#) [DF1510S](#) [VS-](#)
[40MT160PAPBF](#) [GBU4G-BP](#) [GSIB15A80-E3/45](#) [DB104-BP](#) [D3SB60](#) [TB354](#) [GBJ2504-BP](#) [26MB100A](#) [B1S-G](#) [VS-40MT160KPBF](#)
[VUO162-16NO7](#) [ABS10-G](#) [GBU6B-BP](#) [GBJ1508-BP](#) [BR5010-G](#) [ABS6-G](#) [B125C800G-E4/51](#) [MSB15MH-13](#)