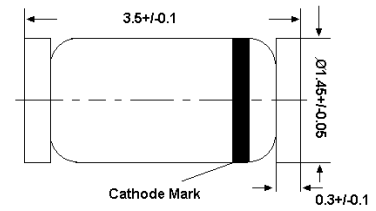


**Silicon Epitaxial Planar Switching Diode**

Fast switching diode in MiniMELF case especially suited for automatic surface mounting



Glass case MiniMELF  
Dimensions in mm

**LL-34**

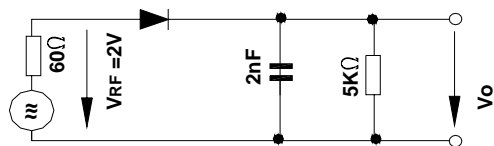
**Absolute Maximum Ratings (T<sub>a</sub> = 25 °C)**

Parameter	Symbol	Value	Unit
Peak Reverse Voltage	V <sub>RM</sub>	100	V
Reverse Voltage	V <sub>R</sub>	75	V
Average Rectified Forward Current	I <sub>F(AV)</sub>	200	mA
Non-repetitive Peak Forward Surge Current	I <sub>FSM</sub>	at t = 1 s 0.5	A
		at t = 1 ms 1	
		at t = 1 μs 4	
Power Dissipation	P <sub>tot</sub>	500 <sup>1)</sup>	mW
Junction Temperature	T <sub>j</sub>	175	°C
Storage Temperature Range	T <sub>stg</sub>	- 65 to + 175	°C
<sup>1)</sup> Valid provided that electrodes are kept at ambient temperature.			

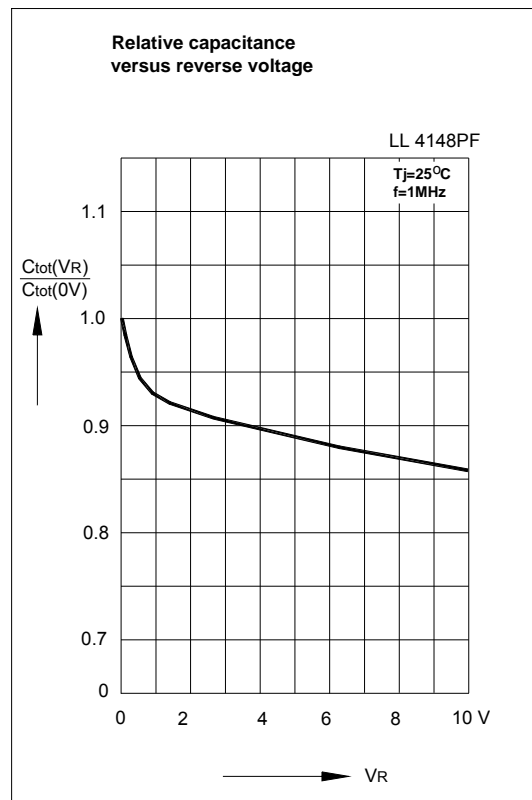
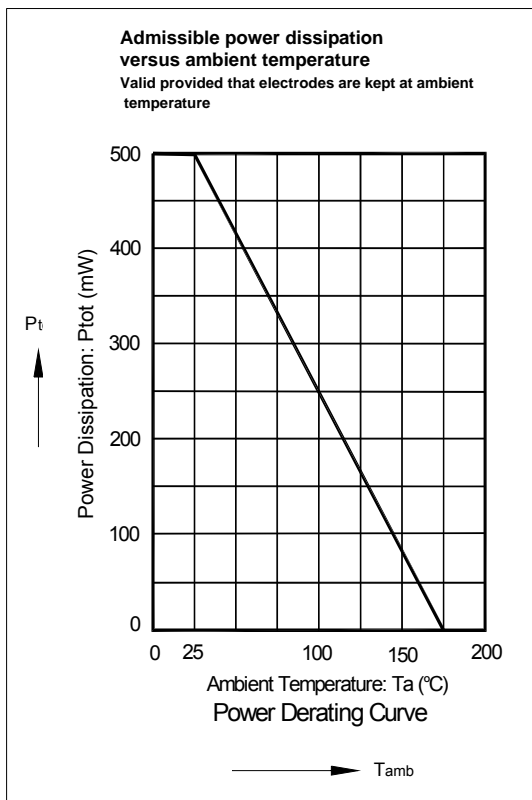
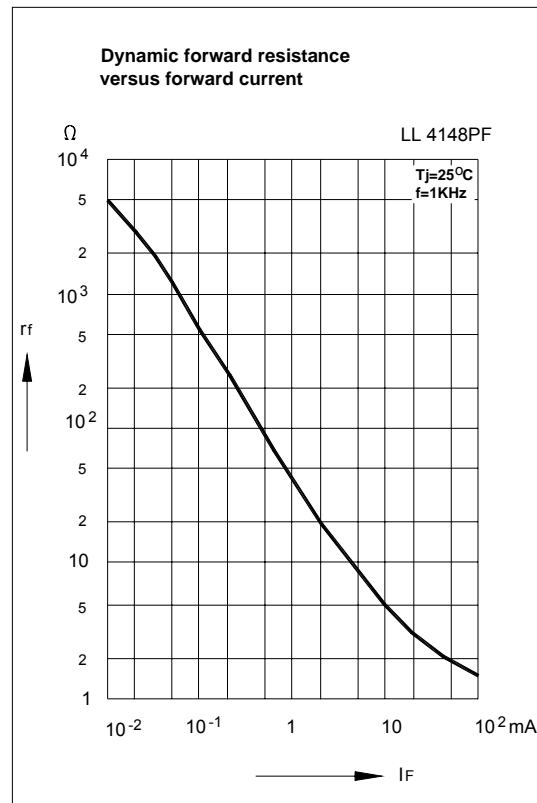
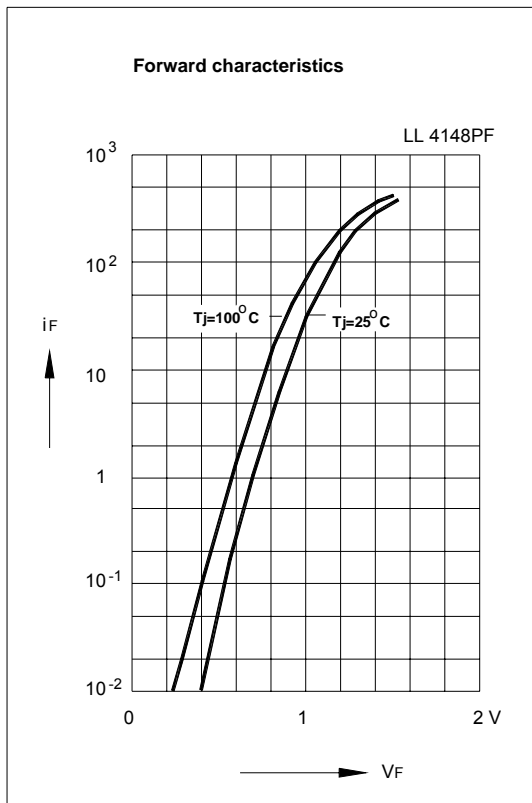
Characteristics at  $T_a = 25\text{ }^\circ\text{C}$

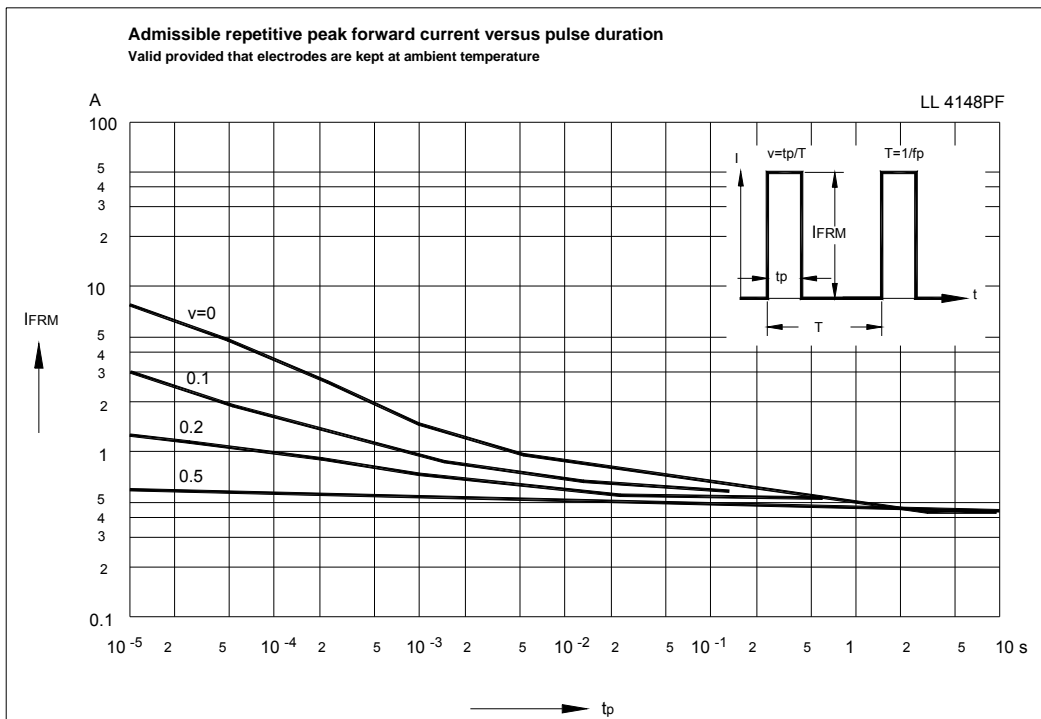
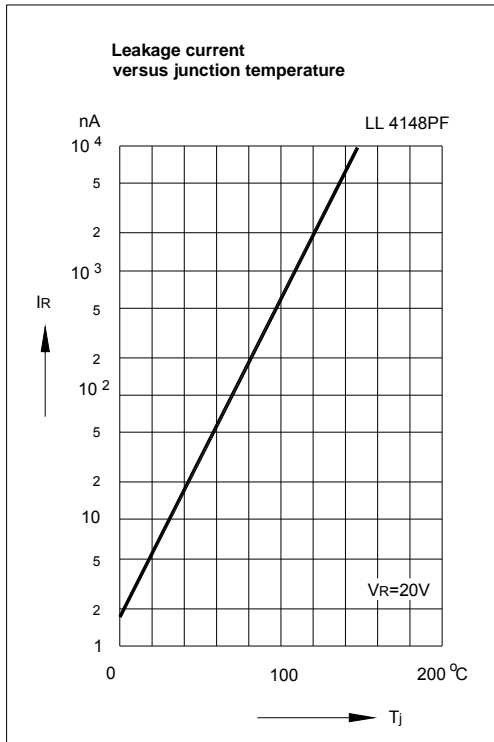
Parameter	Symbol	Min.	Max.	Unit
Forward Voltage at $I_F = 10\text{ mA}$	$V_F$	-	1	V
Leakage Current at $V_R = 20\text{ V}$ at $V_R = 75\text{ V}$ at $V_R = 20\text{ V}, T_j = 150\text{ }^\circ\text{C}$	$I_R$ $I_R$ $I_R$	- - -	25 5 50	nA $\mu\text{A}$ $\mu\text{A}$
Reverse Breakdown Voltage tested with $100\text{ }\mu\text{A}$ Pulses	$V_{(BR)R}$	100	-	V
Capacitance at $V_R = 0, f = 1\text{ MHz}$	$C_{tot}$	-	4	pF
Voltage Rise when Switching ON tested with $50\text{ mA}$ Forward Pulses $t_p = 0.1\text{ s}$ , Rise Time $< 30\text{ ns}$ , $f_p = 5\text{ to }100\text{ KHz}$	$V_{fr}$	-	2.5	V
Reverse Recovery Time at $I_F = 10\text{ mA}$ to $I_R = 1\text{ mA}$ , $V_R = 6\text{ V}$ , $R_L = 100\text{ }\Omega$	$t_{rr}$	-	4	ns
Thermal Resistance Junction to Ambient Air	$R_{thA}$	-	0.35 <sup>1)</sup>	K/mW
Rectification Efficiency at $f = 100\text{ MHz}$ , $V_{RF} = 2\text{ V}$	$\eta_V$	0.45	-	-

<sup>1)</sup> Valid provided that electrodes are kept at ambient temperature.



Rectification Efficiency Measurement Circuit





## X-ON Electronics

Largest Supplier of Electrical and Electronic Components

*Click to view similar products for* [Diodes - General Purpose, Power, Switching category:](#)

*Click to view products by* [YFW Electronics manufacturer:](#)

Other Similar products are found below :

[MMBD3004S-13-F](#) [1N3611](#) [NTE156A](#) [NTE6244](#) [1SS400CST2RA](#) [SDAA13](#) [SHN2D02FUTW1T1G](#) [1N4449](#) [1N456A](#) [1N914BTR](#)  
[D291S45T](#) [BAS 16-02L E6327](#) [BAS 16-02V H6327](#) [BAS 21U E6327](#) [BAS 28 E6327](#) [BAW56DWQ-7-F](#) [BAW75-TAP](#) [MM230L-CAA](#)  
[IDW40E65D1](#) [JAN1N3600](#) [JAN1N4454UR-1](#) [SMMSD4148T3G](#) [BYW95B/A52A](#) [NSVDAN222T1G](#) [CDSZC01100-HF](#) [BAV70HDW-7](#)  
[BAS28-7](#) [JANTX1N6640](#) [BAW56HDW-13](#) [BAS28 TR](#) [VS-HFA04SD60STR-M3](#) [1SS388-TP](#) [BAV99TQ-13-F](#) [BAV99HDW-13](#) [1N4004](#)  
[MMDB30-E28X](#) [LS4148](#) [IDV15E65D2](#) [W0503RH200S0L](#) [W0503SH200S0L](#) [M0268SJ200NLF](#) [M0268RJ200NLF](#) [S3MBF](#) [US1J](#)  
[DAN217U-TP](#) [SHV-06JNS-Q](#) [IDW30C65D1](#) [IDW80C65D1](#) [VS-HFA30TA60CSR-M3](#) [M1MA152WAT1](#)