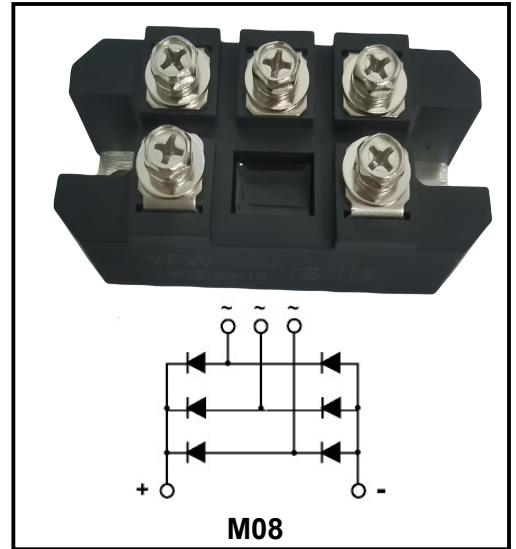


**Three Phases Rectification Bridge Modules**
**Reverse Voltage - 1600V**
**Forward Current - 0.75KA**
**Features**

- ◆ Solder joint technology with
- ◆ Increased power cycling capability
- ◆ Space and weight saving

**Typical Applications**

- ◆ Inverter
- ◆ Inductive heating
- ◆ Choppe



CHARACTERISTIC	TEST CONDITONS	SYMBOL	T <sub>j</sub> (°C)	value			UNIT
				Min	Type	Max	
DC output current	Three-phase full wave rectifying circuit, T <sub>c</sub> =100°C	<b>I<sub>o</sub></b>	150			50	A
Repetitive peak reverse voltage	V <sub>RRM</sub> tp=10ms V <sub>RSM</sub> = V <sub>DRM</sub> & V <sub>DRM</sub> +200V	<b>V<sub>RRM</sub></b>	150	600		1800	V
Repetitive peak current	at V <sub>RRM</sub>	<b>I<sub>RRM</sub></b>	150			8	mA
Surge foward current	10ms half sinewave V <sub>R</sub> =0. 6V <sub>RRM</sub>	<b>I<sub>FSM</sub></b>	150			0. 75	KA
I <sup>2</sup> T for fusing coordination		<b>I<sup>2</sup>t</b>				2.8	A <sup>2</sup> s*10 <sup>3</sup>
Threshold voltage		<b>V<sub>FO</sub></b>	150			0. 80	V
Forward slop resistance		<b>r<sub>F</sub></b>				9.0	mΩ
Peak foward voltage	I <sub>FM</sub> =50A	<b>V<sub>FM</sub></b>	25			1. 1	V
Thermal resistance Junction to heatsink	Single side cooled	<b>R<sub>th(j-c)</sub></b>				0. 55	°C /W
Isolation voltage	50Hz, RM. S, t=1min iso:1mA(max)	<b>V<sub>iso</sub></b>		2500			V
Terminal connection torque (M5)		<b>F<sub>m</sub></b>			2.0		N.m
Mounting torque (M6)					3.0		N.m
Stored temperature		<b>T<sub>stg</sub></b>		-40		125	°C
Weight		<b>W<sub>t</sub></b>			154		g

**Rating and Characteristic Curves**

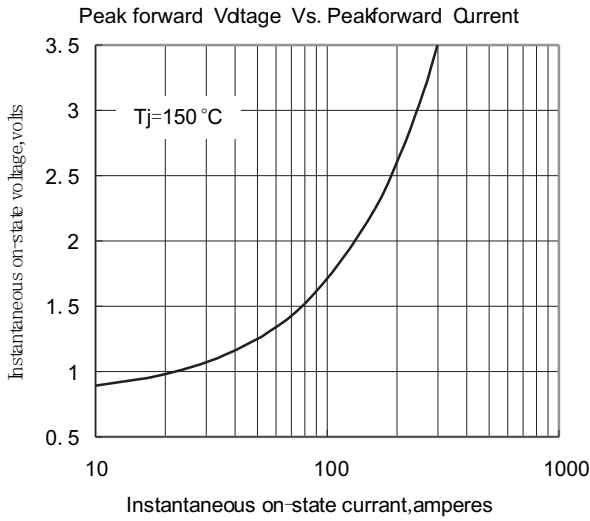


Fig. 1

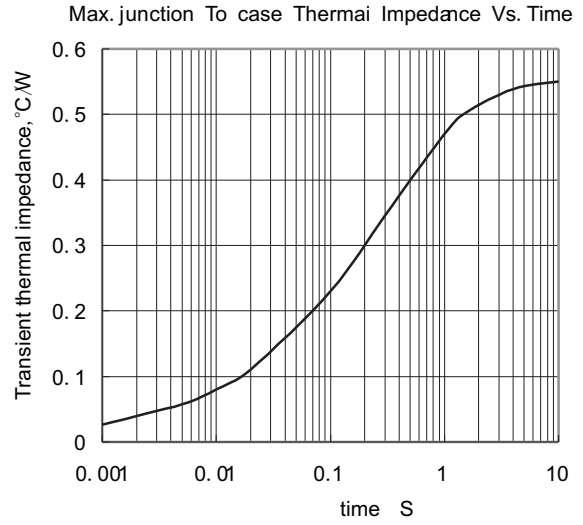


Fig. 2

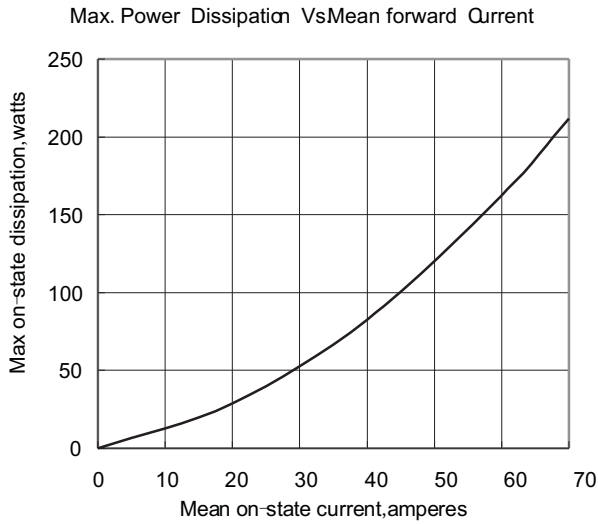


Fig. 3

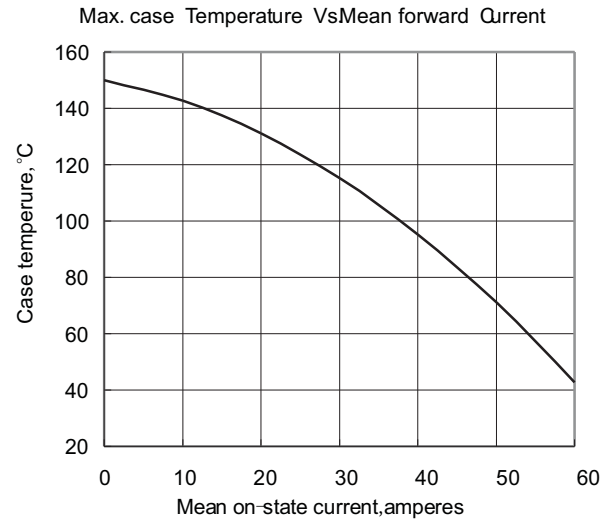


Fig. 4

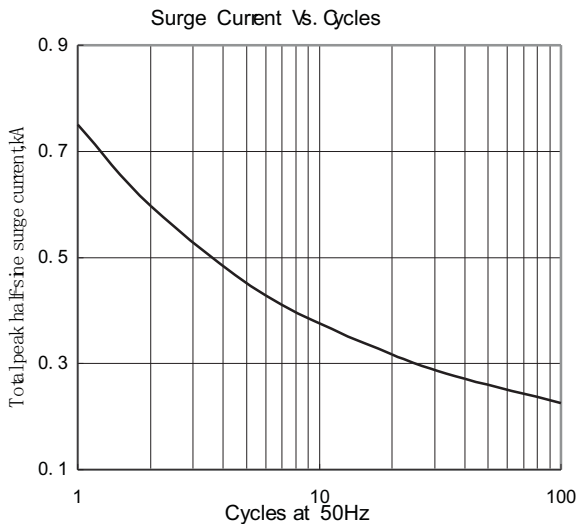


Fig. 5

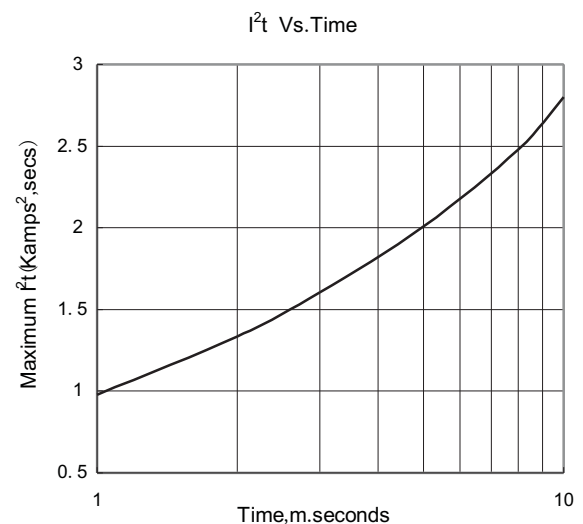
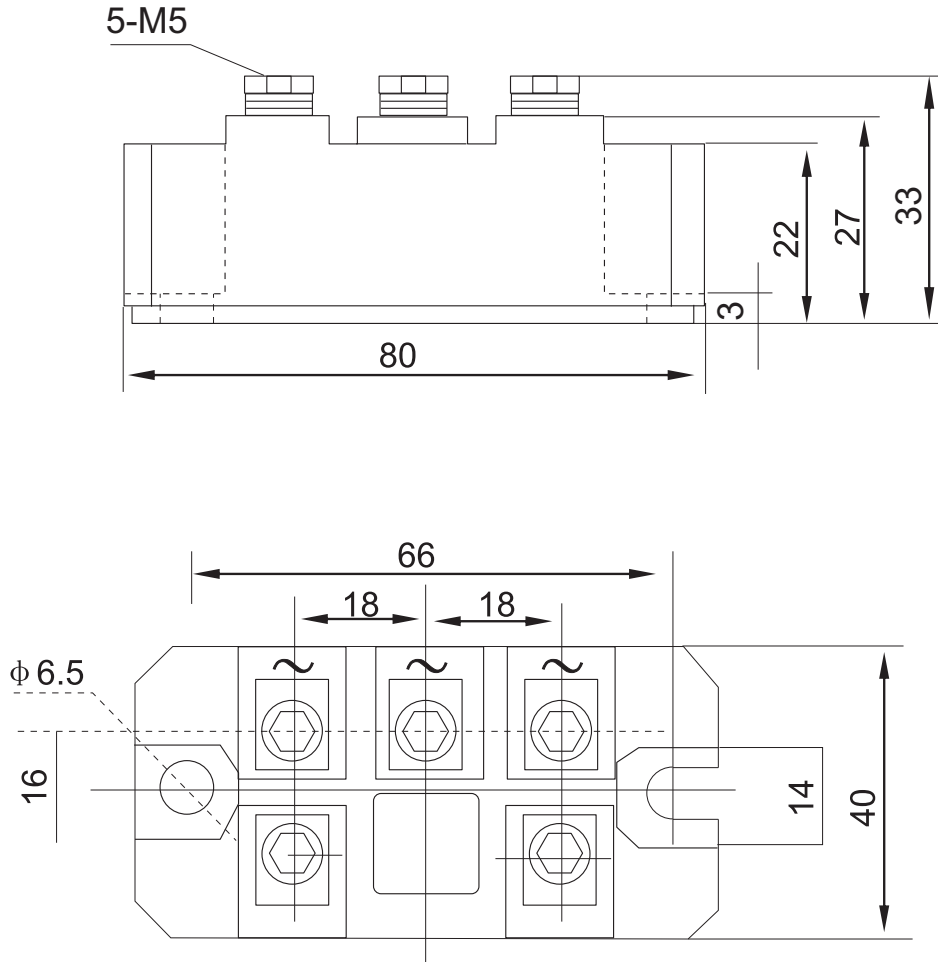


Fig. 6

Package Outline Dimensions in Millimeters



Product Specification Classification

Part Number	Package	Marking	Pack
MDS50-16	M08	YFW MDS50-16 XXXXX	10pcs/box 100pcs/carton

## X-ON Electronics

Largest Supplier of Electrical and Electronic Components

*Click to view similar products for [Bridge Rectifiers](#) category:*

*Click to view products by [YFW Electronics](#) manufacturer:*

Other Similar products are found below :

[MB2510](#) [MB252](#) [MB356G](#) [MB358G](#) [GBJ1504-BP](#) [GBU10B-BP](#) [GBU15K-BP](#) [GBU4A-BP](#) [GBU4D-BP](#) [DB101-BP](#) [DF01](#) [DF10SA-E345](#)  
[KBPC50-10S](#) [RS405GL-BP](#) [GBJ1502-BP](#) [GBU6M](#) [TB102M](#) [MB1510](#) [MB86](#) [TL401G](#) [MDA920A2](#) [TU602](#) [TU810](#) [MP5010W-BP](#)  
[MP501W-BP](#) [MP502-BP](#) [KBPC25-02](#) [VBO160-12NO7](#) [VS-110MT120KPBF](#) [VS-60MT80KPBF](#) [DB105-BP](#) [DF1510S](#) [VS-](#)  
[40MT160PAPBF](#) [GBU4G-BP](#) [GSIB15A80-E3/45](#) [DB104-BP](#) [D3SB60](#) [TB354](#) [GBJ2504-BP](#) [26MB100A](#) [B1S-G](#) [VS-40MT160KPBF](#)  
[VUO162-16NO7](#) [ABS10-G](#) [GBU6B-BP](#) [GBJ1508-BP](#) [BR5010-G](#) [ABS6-G](#) [B125C800G-E4/51](#) [MSB15MH-13](#)