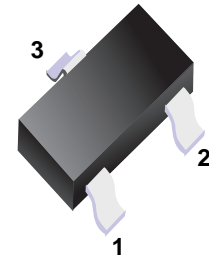


■ NPN Transistor

■ Features

- Small Package
- Complementary to MMBT3906T



1.Base
2.Emitter
3.Collector

■ Simplified outline(SOT-523)

■ Marking

Marking	1N
---------	----

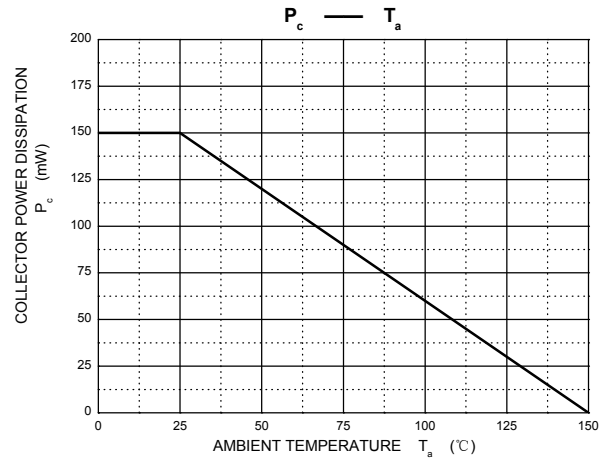
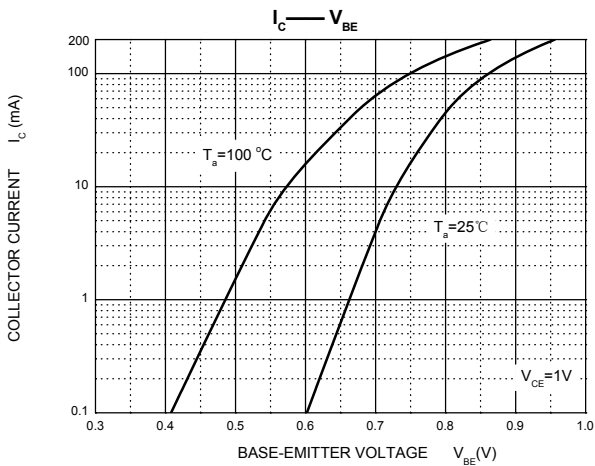
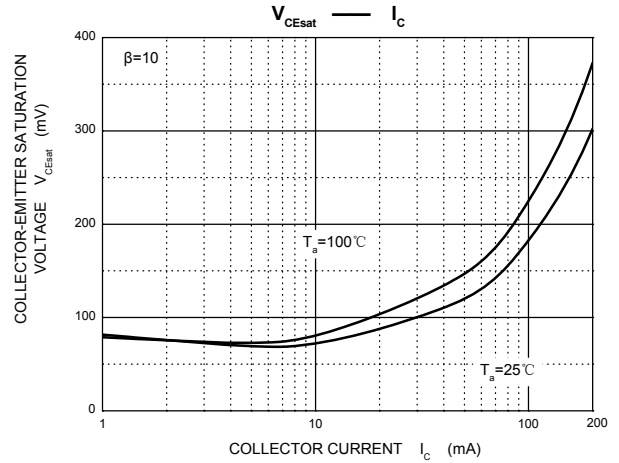
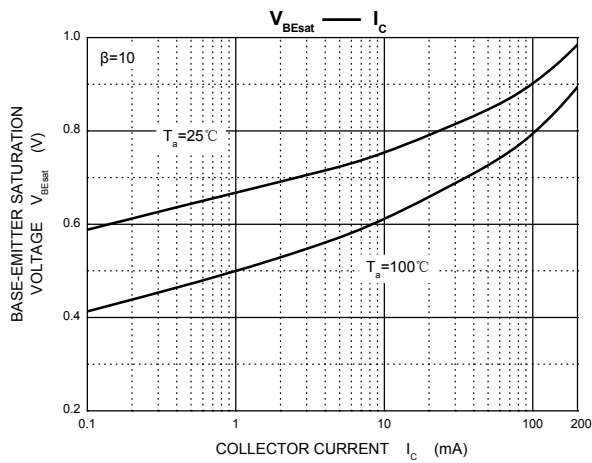
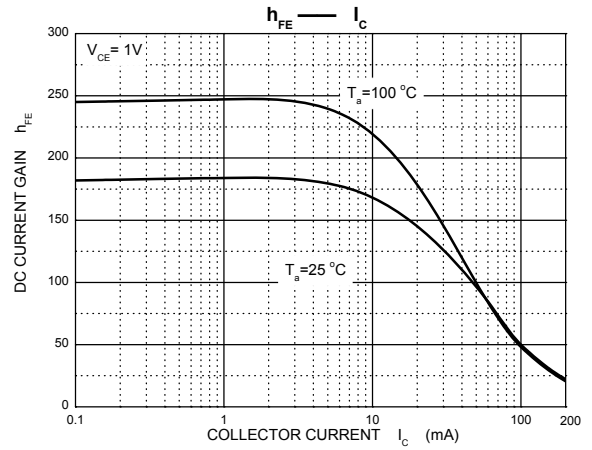
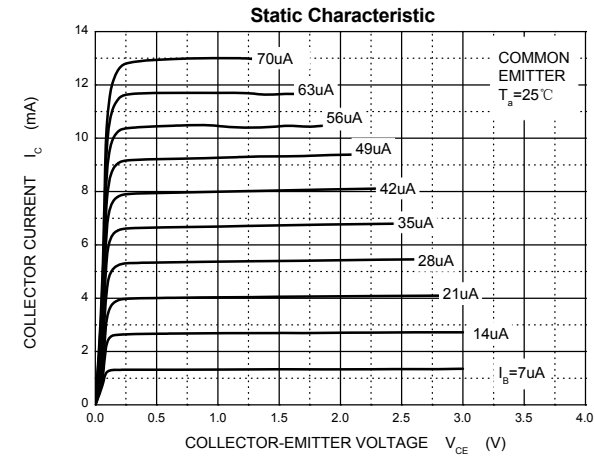
■ Absolute Maximum Ratings Ta = 25°C

Parameter	Symbol	Rating	Unit
Collector - Base Voltage	V _{CB0}	60	V
Collector - Emitter Voltage	V _{CE0}	40	
Emitter - Base Voltage	V _{EB0}	6	
Collector Current - Continuous	I _c	200	mA
Collector Power Dissipation	P _c	150	mW
Thermal Resistance, Junction to Ambient	R _{θJA}	833	°C/W
Junction Temperature	T _J	150	°C
Storage Temperature Range	T _{stg}	-55 to 150	

■ Electrical Characteristics Ta = 25°C

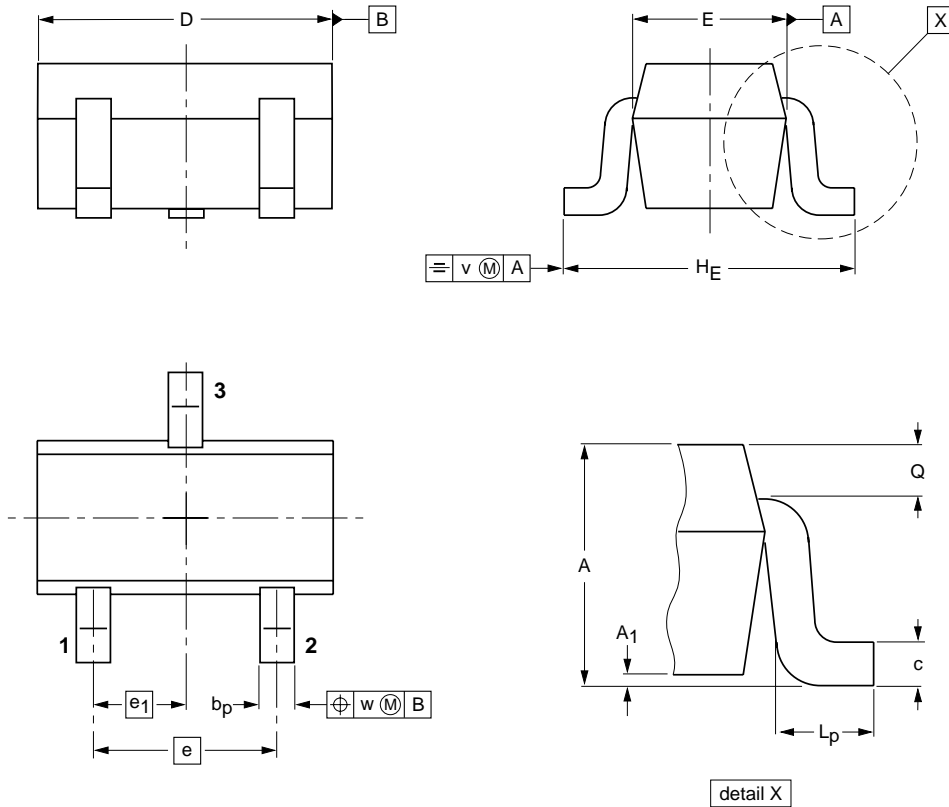
Parameter	Symbol	Test Conditions	Min	Typ	Max	Unit
Collector- base breakdown voltage	V _{CB0}	I _c = 100 μA, I _E = 0	60			V
Collector- emitter breakdown voltage	V _{CEO}	I _c = 1 mA, I _B = 0	40			
Emitter - base breakdown voltage	V _{EB0}	I _E = 100 μA, I _C = 0	6			
Collector-base cut-off current	I _{CBO}	V _{CB} = 60 V, I _E = 0			100	nA
Collector cut-off current	I _{CEX}	V _{CE} = 30 V, V _{EB(off)} =3V			50	
Emitter cut-off current	I _{EBO}	V _{EB} = 5V, I _C =0			100	
Collector-emitter saturation voltage	V _{CE(sat)}	I _C =10 mA, I _B =1mA			0.2	V
		I _C = 50 mA, I _B = 5mA			0.3	
Base - emitter saturation voltage	V _{BE(sat)}	I _C =10 mA, I _B =1mA	0.65		0.85	
		I _C = 50 mA, I _B = 5mA			0.95	
DC current gain	h _{FE(1)}	V _{CE} = 10V, I _C = 0.1mA	40			
	h _{FE(2)}	V _{CE} = 10V, I _C = 1mA	70			
	h _{FE(3)}	V _{CE} = 10V, I _C = 10mA	100		300	
	h _{FE(4)}	V _{CE} = 10V, I _C = 50mA	60			
Delay time	t _d	V _{CC} =3V, V _{BE(off)} =-0.5V			35	nS
Rise time	t _r	I _C =10mA, I _{B1} =1mA			35	
Storage time	t _s	V _{CC} =3V, I _C =10mA, I _{B1} =I _{B2} =1mA			200	
Fall time	t _f				50	
Collector output capacitance	C _{ob}	V _{CB} = 5V, I _E = 0, f=1MHz			4	pF
Base input capacitance	C _{ib}	V _{EB} =0.5V, I _C =0, f=1MHz			8	
Transition frequency	f _T	V _{CE} = 20V, I _C = 10mA, f=100MHz	300			MHz

■ Typical Characteristics



Package Outline

SOT-523



DIMENSIONS (mm are the original dimensions)

UNIT	A	A ₁ max	b _p	c	D	E	e	e ₁	H _E	L _p	Q	v	w
mm	0.95 0.60	0.1	0.30 0.15	0.25 0.10	1.8 1.4	0.9 0.7	1	0.5	1.75 1.45	0.45 0.15	0.23 0.13	0.2	0.2

Summary of Packing Options

Package	Packing Description	Packing Quantity	Industry Standard
SOT-523	Tape/Reel,7"reel	3000	EIA-481-1

X-ON Electronics

Largest Supplier of Electrical and Electronic Components

Click to view similar products for [Bipolar Transistors - BJT category](#):

Click to view products by [YFW Electronics manufacturer](#):

Other Similar products are found below :

[BC559C](#) [MCH4017-TL-H](#) [MMBT-2369-TR](#) [BC546/116](#) [NJVMJD148T4G](#) [NTE16](#) [NTE195A](#) [IMX9T110](#) [2N4401-A](#) [2N6728](#) [2SA1419T-TD-H](#) [2SB1204S-TL-E](#) [2SC5488A-TL-H](#) [FMC5AT148](#) [2N2369ADCSM](#) [2N2907A](#) [2N3904-NS](#) [2N5769](#) [2SC4618TLN](#) [CPH6501-TL-E](#) [US6T6TR](#) [BAX18/A52R](#) [BC556/112](#) [IMZ2AT108](#) [MMST8098T146](#) [MCH6102-TL-E](#) [BC846B-13-F](#) [2N3879](#) [30A02MH-TL-E](#) [NTE13](#) [NTE282](#) [NTE323](#) [NTE350](#) [NTE81](#) [JANTX2N2920L](#) [JANSR2N2907AUB](#) [CMLT3946EG TR](#) [SNSS40600CF8T1G](#) [CMLT3906EG TR](#) [GRP-DATA-JANS2N2907AUB](#) [GRP-DATA-JANS2N2222AUA](#) [MMDT3946FL3-7](#) [2N4240](#) [JANS2N3019](#) [MSB30KH-13](#) [2N2221AUB](#) [2SD1815T-TL-E](#) [2N6678](#) [2N2907Ae4](#) [JAN2N3507](#)