

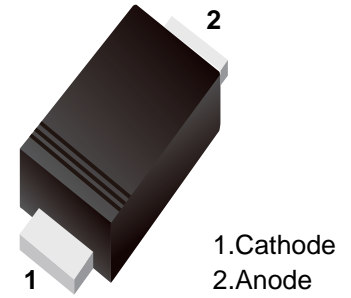
■ Schottky Barrier Diode

■ FEATURES

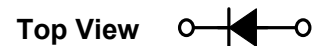
- Low forward voltage drop.
- Guard ring construction for transient protection.
- Low reverse recovery time.
- Low reverse capacitance.

■ APPLICATIONS

- Schottky barrier application.



■ Simplified outline(SOD-523)



■ Marking

Marking	S4
---------	----

**MAXIMUM RATING @ Ta=25°C unless otherwise specified**

Parameter	Symbol	Limits	Unit
DC Reverse voltage	$V_R$	40	V
Continuous forward current	$I_F$	350	mA
Repetitive peak forward current @t≤1.0s	$I_{FRM}$	1	A
Total power dissipation	$P_{tot}$	400	mW
Total resistance junction to ambient	$R_{\theta JA}$	300	°C/W
Junction temperature	$T_j$	125	°C
Storage temperature	$T_{stg}$	-65-125	°C

**ELECTRICAL CHARACTERISTICS @ Ta=25°C unless otherwise specified**

Parameter	Symbol	Min.	Typ.	Max.	Unit	Conditions
Reverse breakdown voltage	$V_{(BR)R}$	40			V	$I_R=100\mu A$
Forward voltage	$V_F$			0.37 0.60	V	$I_F=20mA$ $I_F=200mA$
Reverse current	$I_R$			5.0	$\mu A$	$V_R=30V$
Diode capacitance	$C_d$		50		pF	$V_R=0V, f=1MHz$
Reverse recovery time	$t_{rr}$		10		ns	$I_F=I_R=50mA, R_L=100\Omega$

■ TYPICAL CHARACTERISTICS @ Ta=25°C unless otherwise specified

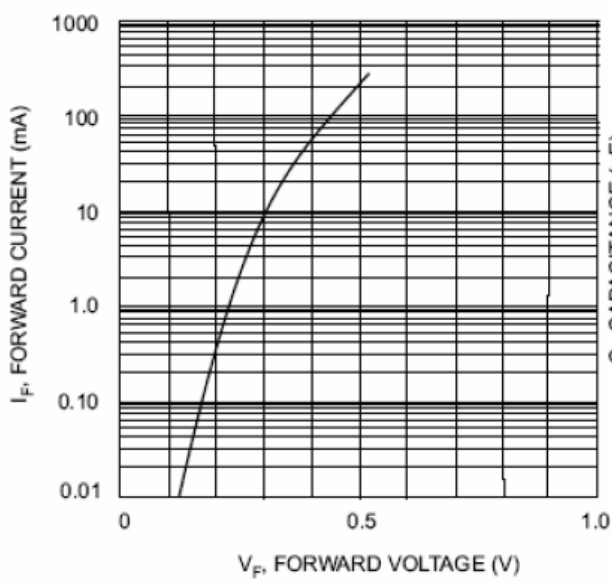


Fig. 1 Typical Forward Characteristics

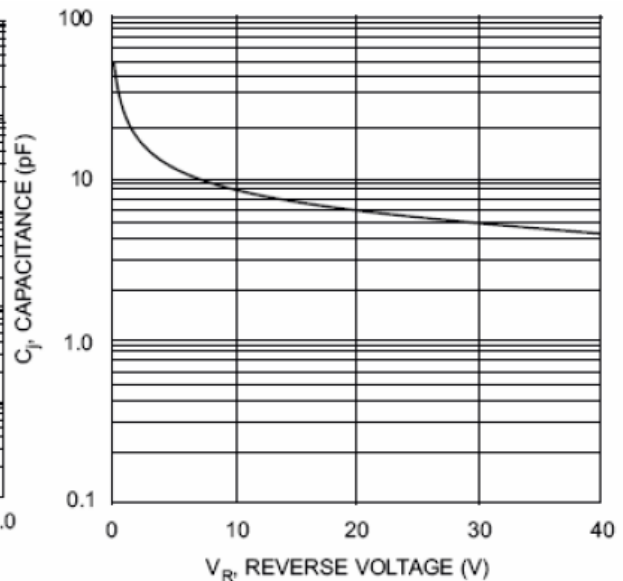
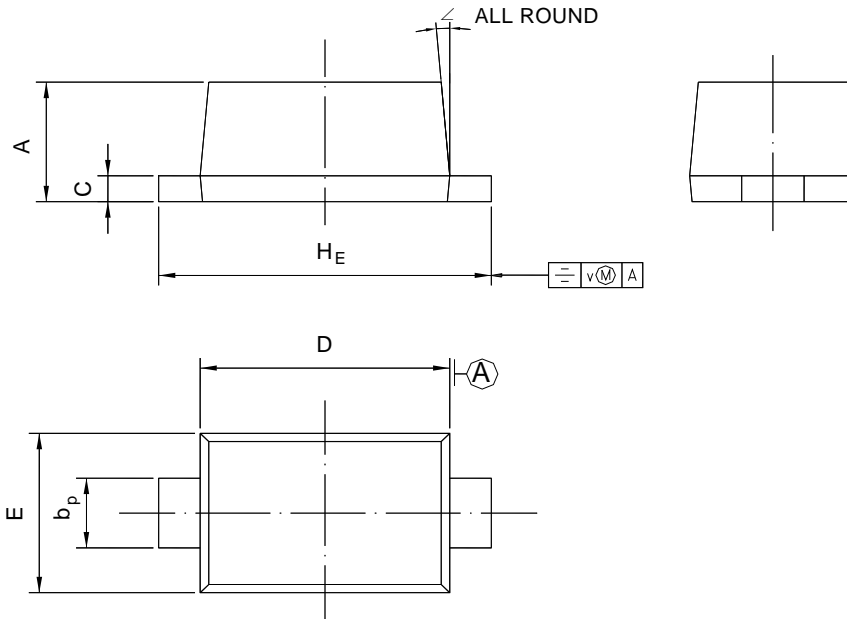


Fig. 2 Typ. Junction Capacitance vs Reverse Voltage

**Package Outline SOD-523**

Plastic surface mounted package; 2 leads



UNIT	A	$b_p$	C	D	E	$H_E$	V	$\angle$
mm	0.70 0.60	0.4 0.3	0.135 0.100	1.25 1.15	0.85 0.75	1.7 1.5	0.1	5°

**Summary of Packing Options**

Package	Packing Description	Packing Quantity	Industry Standard
SOD-523	Tape/Reel, 7" reel	3000	EIA-481-1

## X-ON Electronics

Largest Supplier of Electrical and Electronic Components

*Click to view similar products for [Schottky Diodes & Rectifiers](#) category:*

*Click to view products by [YFW Electronics](#) manufacturer:*

Other Similar products are found below :

[MA4E2039](#) [MMBD301M3T5G](#) [HFA35HB60C](#) [RB160M-50TR](#) [D83C](#) [BAS16E6433HTMA1](#) [BAS 3010S-02LRH](#) [E6327](#) [BAT 54-02LRH](#)  
[E6327](#) [NRVBAF360T3G](#) [NSR05F40QNXT5G](#) [NTE555](#) [JANS1N6640](#) [SS3003CH-TL-E](#) [GA01SHT18](#) [CRS10I30A\(TE85L,QM](#)  
[MBRA140TRPBF](#) [MBRB30H30CT-1G](#) [BAT 15-04R](#) [E6152](#) [JANTX1N5712-1](#) [DMJ3940-000](#) [SB007-03C-TB-E](#) [NRVBB20100CTT4G](#)  
[NRVBM120LT1G](#) [NTSB30U100CT-1G](#) [CRG04\(T5L,TEMQ\)](#) [ACDBA1100LR-HF](#) [ACDBA1200-HF](#) [ACDBA240-HF](#) [ACDBA3100-HF](#)  
[CDBQC0530L-HF](#) [ACDBA260LR-HF](#) [ACDBA1100-HF](#) [10BQ015-M3/5BT](#) [NRVBM120ET1G](#) [VSSB410S-M3/5BT](#) [1N5819T-G](#)  
[PDS1040Q-13](#) [B160BQ-13-F](#) [SDM05U20CSP-7](#) [BAS 70-07](#) [E6433](#) [B140S1F-7](#) [HSM560Je3/TR13](#) [DDB2265-000](#) [ZHCS506QTA](#)  
[HSM190Je3/TR13](#) [B330AF-13](#) [ACDBUC0230-HF](#) [SDM1U100S1F-7](#) [MBR10200CTF-G1](#) [CDLL5712](#)