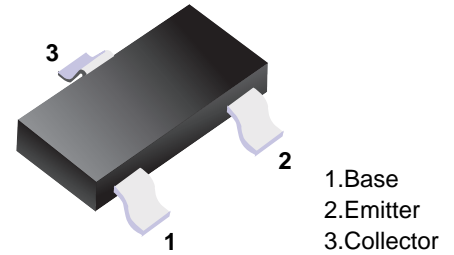


■ PNP Transistors



■ Simplified outline(SOT-23)

■ Features

- Collector Current:  $I_c = -1.5A$

■ Absolute Maximum Ratings  $T_a = 25^\circ C$

Parameter	Symbol	Rating	Unit
Collector-Base Voltage	$V_{CB0}$	-40	V
Collector-Emitter Voltage	$V_{CE0}$	-25	V
Emitter-Base Voltage	$V_{EB0}$	-5	V
Collector Current -Continuous	$I_c$	-1.5	A
Collector Power Dissipation	$P_c$	0.3	W
Junction Temperature	$T_j$	150	$^\circ C$
Storage Temperature	$T_{stg}$	-55 to 150	$^\circ C$

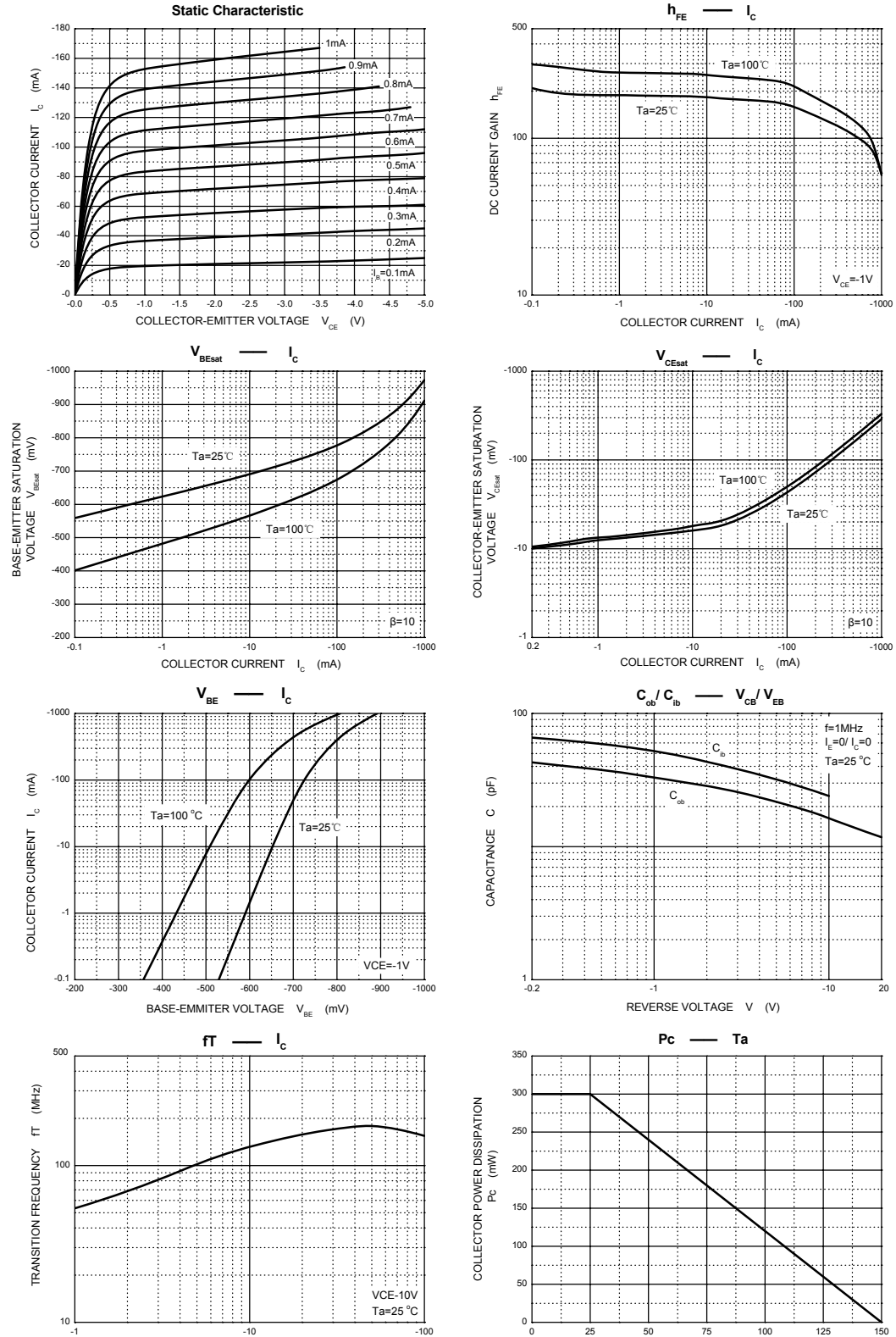
■ Electrical Characteristics  $T_a = 25^\circ C$

Parameter	Symbol	Testconditions	Min	Typ	Max	Unit
Collector-base breakdown voltage	$V_{CB0}$	$I_c = -100 \mu A, I_E = 0$	-40			V
Collector-emitter breakdown voltage	$V_{CE0}$	$I_c = -1mA, I_B = 0$	-25			V
Emitter-base breakdown voltage	$V_{EB0}$	$I_E = -100 \mu A, I_c = 0$	-5			V
Collector cut-off current	$I_{CBO}$	$V_{CB} = -40V, I_E = 0$			-0.1	$\mu A$
Collector cut-off current	$I_{CEO}$	$V_{CE} = -20V, I_B = 0$			-1	$\mu A$
Emitter cut-off current	$I_{EBO}$	$V_{EB} = -5V, I_c = 0$			-0.1	$\mu A$
DC current gain	$h_{FE}$	$V_{CE} = -1V, I_c = -100mA$	120		400	
		$V_{CE} = -1V, I_c = -800mA$	40			
Collector-emitter saturation voltage	$V_{CE(sat)}$	$I_c = -800mA, I_B = -80mA$			-0.5	V
Base-emitter saturation voltage	$V_{BE(sat)}$	$I_c = -800mA, I_B = -80mA$			-1.2	V
Base-emitter on voltage	$V_{BE(on)}$	$I_c = -1V, V_{CE} = -10mA$			-1	V
output capacitance	$C_{ob}$	$V_{CB} = -10V, I_E = 0, f = 1MHz$			20	pF
Transition frequency	$f_T$	$V_{CE} = -10V, I_c = -50mA, f = 30MHz$	100			MHz

■  $h_{FE}(1)$  Classification

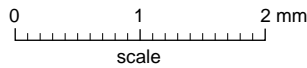
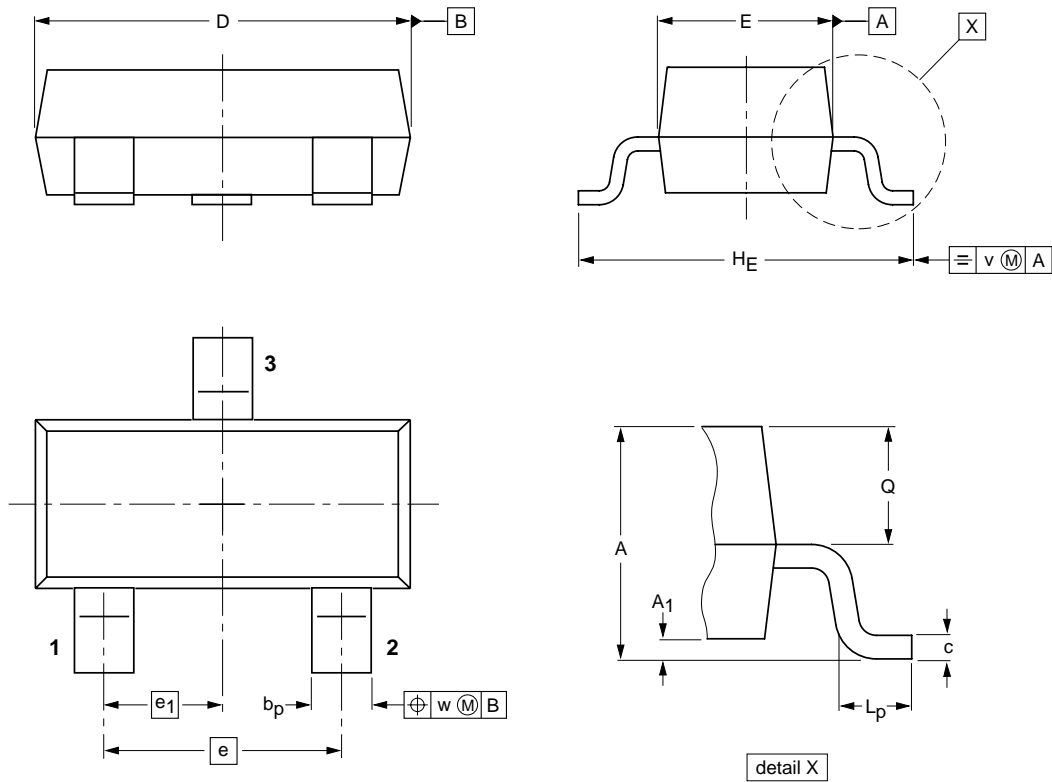
Type	SS8550	SS8550-L	SS8550-H	SS8550-J
Range	200-350	120-200	144-202	300-400
Marking	Y2			

■ Typical Characteristics



**Package Outline**

**SOT-23**



**DIMENSIONS (mm are the original dimensions)**

UNIT	A	A <sub>1</sub> max.	b <sub>p</sub>	c	D	E	e	e <sub>1</sub>	H <sub>E</sub>	L <sub>p</sub>	Q	v	w
mm	1.1 0.9	0.1	0.48 0.38	0.15 0.09	3.0 2.8	1.4 1.2	1.9	0.95	2.5 2.1	0.45 0.15	0.55 0.45	0.2	0.1

**Summary of Packing Options**

Package	Packing Description	Packing Quantity	Industry Standard
SOT-23	Tape/Reel, 7" reel	3000	EIA-481-1

## X-ON Electronics

Largest Supplier of Electrical and Electronic Components

*Click to view similar products for [Bipolar Transistors - BJT category](#):*

*Click to view products by [YFW Electronics manufacturer](#):*

Other Similar products are found below :

[619691C](#) [MCH4017-TL-H](#) [MMBT-2369-TR](#) [BC546/116](#) [BC557/116](#) [BSW67A](#) [NJVMJD148T4G](#) [NTE123AP-10](#) [NTE153MCP](#) [NTE16](#)  
[NTE195A](#) [NTE92](#) [2N4401-A](#) [2N6728](#) [2SA1419T-TD-H](#) [2SA2126-E](#) [2SB1204S-TL-E](#) [2SC2712S-GR,LF](#) [SP000011176](#) [2N2907A](#) [2N3904-](#)  
[NS](#) [2N5769](#) [2SC2412KT146S](#) [CPH6501-TL-E](#) [MCH4021-TL-E](#) [MJE340](#) [Jantx2N5416](#) [US6T6TR](#) [NJL0281DG](#) [732314D](#) [CPH3121-TL-E](#)  
[CPH6021-TL-H](#) [873787E](#) [IMZ2AT108](#) [MMST8098T146](#) [UMX21NTR](#) [MCH6102-TL-E](#) [NJL0302DG](#) [30A02MH-TL-E](#) [NTE13](#) [NTE26](#)  
[NTE282](#) [NTE323](#) [NTE350](#) [NTE81](#) [STX83003-AP](#) [JANTX2N2920L](#) [JANSR2N2222AUB](#) [CMLT3946EG TR](#) [2SA1371D-AE](#)