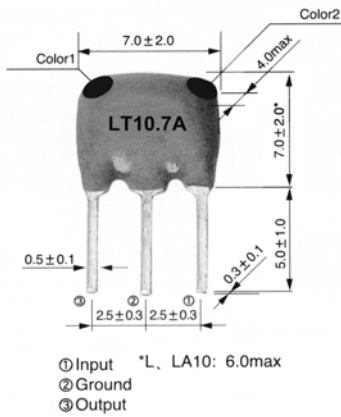


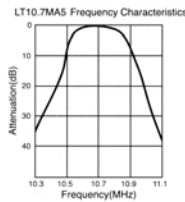
● TECHNICAL CHARACTERISTICS



Color1:MA5,MA5A10,MS2,MS2A10,MJA10
Color2:MS3,MS3A10,MHY,MJ

Prat Number	3dB Band Width(KHz)	20dB Band Width (KHz)	Insertion Loss (dB) max.	Spurious Attenuation (9-12MHz)(dB)min.
LT10.7MA5	280±50	650	6	30
LT10.7MS2	230±50	600	6	40
LT10.7MS3	180±40	520	7	40
LT10.7MA5A10	280±50	590	2.5±2.0	30
LT10.7MS2A10	230±50	520	3.0±2.0	35
LT10.7MS3A10	180±40	470	3.5±1.5	35
LT10.7MJA10	150±40	360	4.5±2.0	35
LT10.7MA21	400 min.	950	3.0±2.0	20
LT10.7MA19	±175 min.	950	3.0±2.0	20
LT10.7MA20	300±50	680	4.0±2.0	30
LT10.7MHY	110±30	350	5.5±2.0	30
LT10.7MFP	20 min.	95	6.0 max.	24(10.7±1.0MHz)
LT10.7MA5L	280±50	650	6.0 max.	30
LT10.7MS2L	230±50	600	6.0 max.	40
LT10.7MS3L	180±40	520	7.0 max.	40
LT10.7MJL	150±40	400	10.0 max.	40
LT10.7MA5LA10	280±50	590	2.5±2.0	30
LT10.7MS2LA10	230±50	520	3.0±2.0	35
LT10.7MS3LA10	180±40	470	3.5±1.5	35
LT10.7MJLA10	150±40	360	5.5±2.0	35
LT10.7MA20L	300±50	680	6.0 max.	30
LT10.7MHYL	110±30	350	10.0 max.	30

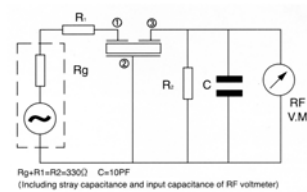
● CHARACTERISTICS



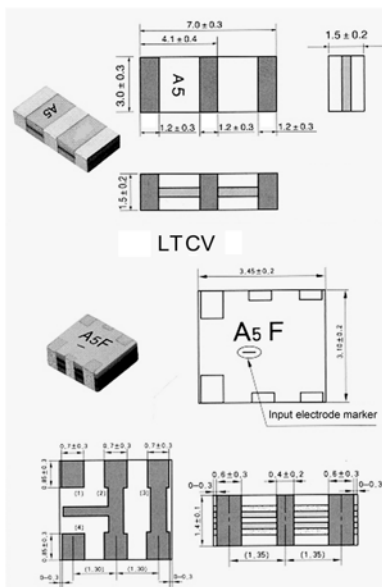
● SPECIFICATION

Center Frequency	Color
D:10.64MHz±30KHz	Black
B:10.67MHz±30KHz	Blue
A:10.70MHz±30KHz	Red
C:10.73MHz±30KHz	Orange
E:10.76MHz±30KHz	White

● TEST CIRCUIT



● TECHNICAL CHARACTERISTICS



Prat Number	3dB Band Width(KHz)	20dB Band Width (KHz)	Insertion Loss (dB) max.	Spurious Attenuation (9-12MHz)(dB)min.
LTCV10.7MJ	150±40	380	5.5±2.0	35
LTCV10.7MS3	180±40	470	4.0±2.0	35
LTCV10.7MS2	230±50	510	3.5±2.0	35
LTCV10.7MA5	280±50	590	3.0±2.0	35
LTCV10.7MA19	$f_n \pm 175$ min.	950	3.0±2.0	20(5-15MHz)
LTCS10.7MS3	180±40	470	4.5±2.0	30
LTCS10.7MS2	230±50	510	3.5±2.0	30
LTCS10.7MA5	280±50	590	3.0±2.0	30
LTCS10.7MA20	330±50	700	3.0±2.0	30

LT CS

X-ON Electronics

Largest Supplier of Electrical and Electronic Components

Click to view similar products for [Resonators](#) category:

Click to view products by [YIC](#) manufacturer:

Other Similar products are found below :

[B39431R820H210](#) [CSAC2.00MGCM-TC](#) [ECS-HFR-40.00-B-TR](#) [CSTLS4M00G53Z-A0](#) [ZTB455E](#) [ECS-CR2-16.00-A-TR](#) [ECS-HFR-20.00-B-TR](#) [ECS-CR2-20.00-A-TR](#) [RO3164E-3](#) [ASR418S2-T](#) [CSTNE10M0G520000R0](#) [CSTLS8M00G53093-A0](#) [CSTNE12M0G52A000R0](#) [CSTLS18M4X54-A0](#) [CSTLS16M9X53Z-B0](#) [CSTLS24M0X51-A0](#) [CSTLS25M0X51-B0](#) [CSTLS18M0X51-B0](#) [CSTLS4M00G53093-A0](#) [CSTLS18M4X53-A0](#) [CSTNE16M0V510000R0](#) [CSTLS30M0X53-B0](#) [CSTLS33M8X53-B0](#) [CSTLS16M9X53-A0](#) [CSTLS6M40G56-B0](#) [CSTLS6M25G56-A0](#) [CSTNE14M7V510000R0](#) [CSTLS18M4X53-B0](#) [CSTLS33M0X51-B0](#) [CSTLS5M50G56-B0](#) [7B008000I01](#) [7D038400I01](#) [TAXM24M2ILDBET2T](#) [TAXM26M2IHDBET2T](#) [146-32.768-12.5-20-20/A](#) [3225-24.00-12-10-10/A](#) [7B009843M01](#) [CF4016M00009T8188042](#) [S32400001B0730D1JB](#) [X252016MLB4SI](#) [Q24FA20H00389](#) [CSTLS16M0X54-B0](#) [CSTLS4M19G56-B0](#) [9AC04194152080D2JB](#) [CST3.58MGW](#) [CSTCR4M91G55B-R0](#) [CSTLS3M68G56-B0](#) [S2100327072090](#) [FC-12M32.768KHZ9PF20PPM](#) [7Y032768NW2](#)