

ESD5V0D3P11

Features

- 1100 Watts peak pulse power per line (tP=8/20μs)
- Solid-state silicon-avalanche technology
- Low clamping voltage
- Working voltages: 5V
- Low leakage current
- High surge capability
- RoHS Compliance
- PROTECTION SOLUTION TO MEET:
IEC61000-4-2 (ESD) ±30kV (air), ±30kV (contact)
IEC61000-4-4 (EFT) 40A (5/50ns)
IEC61000-4-5 (Lightning) 110A (8/20μs)

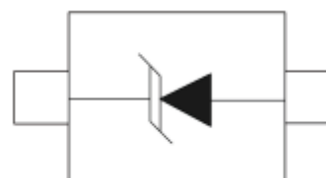
Applications

- Cell phone handsets and accessories
- Microprocessor based equipment
- Personal digital assistants (PDA's)
- Notebooks, desktops, and servers
- Portable instrumentation
- Peripherals
- Power lines

Mechanical Characteristics

- Package: SOD-323
- Molding compound flammability rating : UL 94V-0
- Weight 5 milligrams (approximate)
- Quantity Per Reel:3,000pcs
- Lead finish : lead free

Pin Configuration



SOD-323

Absolute Maximum Ratings

Tamb=25°C unless otherwise specified

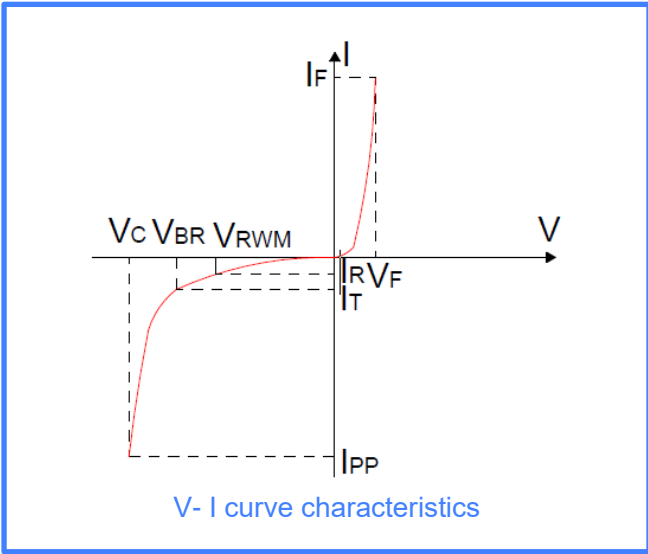
Parameter	Symbol	Value	Unit
Peak Pulse Power (8/20μs)	Ppp	1100	W
Peak Pulse Current (8/20μs)	IPP	110	A
ESD per IEC 61000-4-2 (Air)	V _{ESD}	± 30	KV
ESD per IEC 61000-4-2 (Contact)		± 30	
Lead soldering temperature	TL	260 (10 sec.)	°C
Operating Temperature Range	T _J	-55 to +125	°C
Storage Temperature Range	T _{STJ}	-55 to +150	°C

Electrical Characteristics

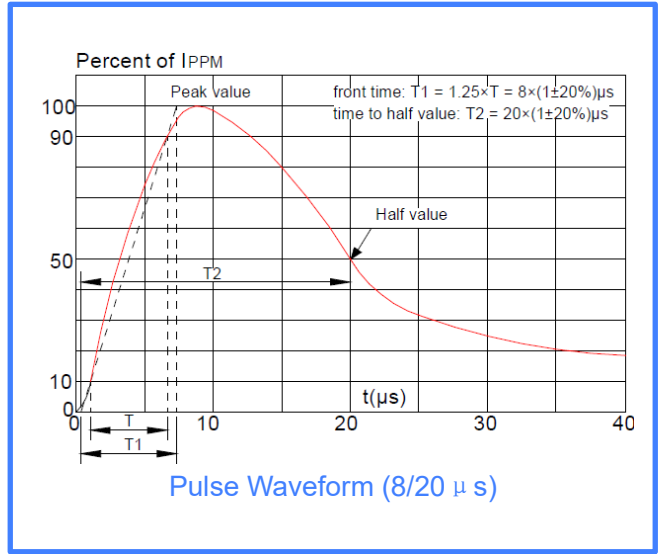
TA=25°C unless otherwise specified

Parameter	Symbol	Conditions	Min	Typ	Max	Unit
Reverse working voltage	VRWM				5	V
Reverse breakdown voltage	VBR	IT=1mA	5.5			V
Reverse leakage current	IR	VRWM = ±4.5V			1	μA
Clamping voltage	VC	IPP=50A, tP =8/20μs		7.5		V
		IPP=110A, tP =8/20μs		9.5	11	V
Junction capacitance	CJ	VRWM = 0V, f = 1MHz		330	400	pF

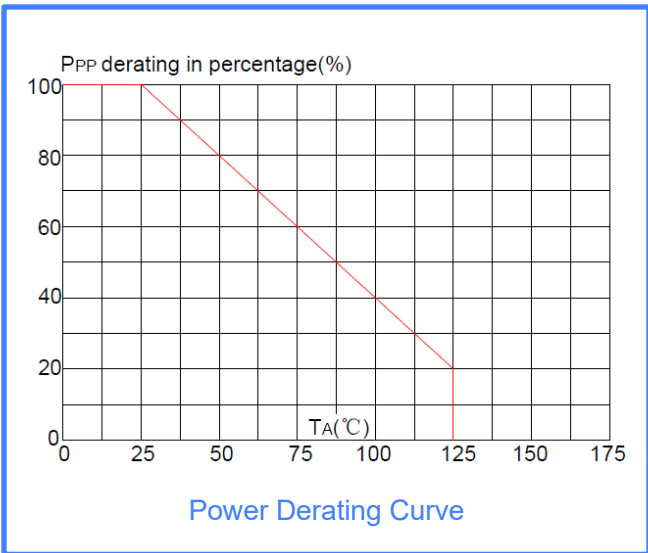
Characteristic Curves



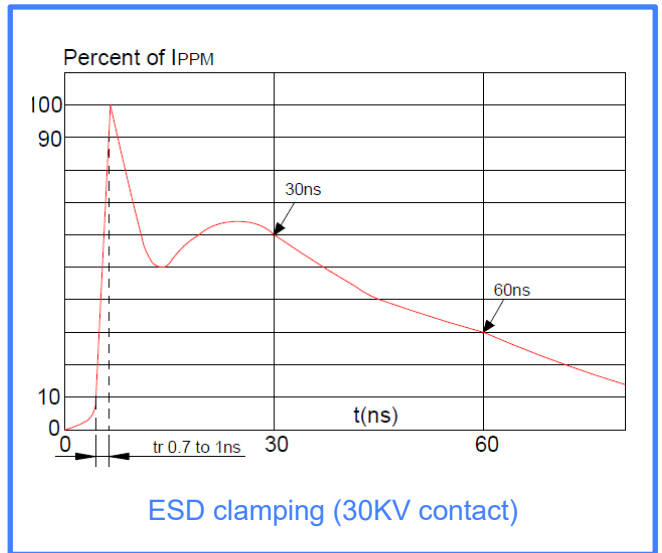
V- I curve characteristics



Pulse Waveform (8/20 μs)

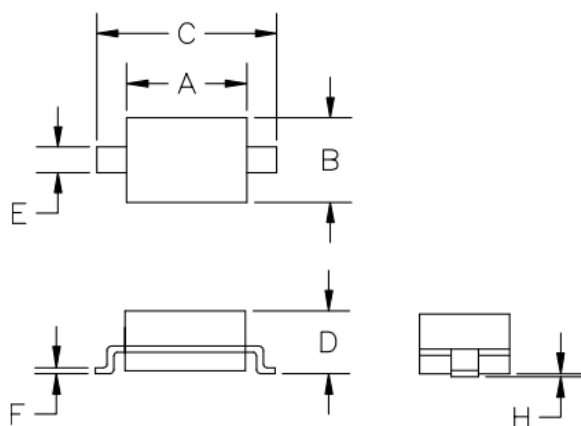


Power Derating Curve

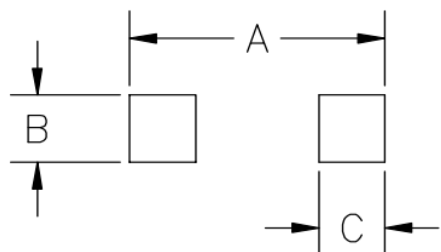


ESD clamping (30KV contact)

SOD-323 Package Outline & Dimensions



Symbol	Millimeters		Inches	
	Min.	Max.	Min.	Max.
A	1.50	1.80	0.060	0.071
B	1.20	1.40	0.045	0.054
C	2.30	2.70	0.090	0.107
D		1.10		0.043
E	0.30	0.40	0.012	0.016
F	0.10	0.25	0.004	0.010
H		0.10		0.004



SYM	DIMENSIONS	
	Millimeters	Inches
A	3.15	0.120
B	0.80	0.031
C	0.80	0.031

X-ON Electronics

Largest Supplier of Electrical and Electronic Components

Click to view similar products for [ESD Suppressors / TVS Diodes](#) category:

Click to view products by [Yint](#) manufacturer:

Other Similar products are found below :

[60KS200C](#) [D18V0L1B2LP-7B](#) [D5V0F4U5P5-7](#) [DESD5V0U1BB-7](#) [NTE4902](#) [P4KE27CA](#) [P6KE11CA](#) [P6KE39CA-TP](#) [P6KE8.2A](#)
[SA110CA](#) [SA60CA](#) [SA64CA](#) [SMBJ12CATR](#) [SMBJ33CATR](#) [SMBJ8.0A](#) [ESD101-B1-02ELS E6327](#) [ESD105-B1-02EL E6327](#) [ESD112-B1-02EL E6327](#) [ESD119B1W01005E6327XTSA1](#) [ESD5V0L1B02VH6327XTSA1](#) [ESD7451N2T5G](#) [19180-510](#) [CPDT-5V0USP-HF](#)
[3.0SMCJ33CA-F](#) [3.0SMCJ36A-F](#) [HSPC16701B02TP](#) [D3V3Q1B2DLP3-7](#) [D55V0M1B2WS-7](#) [DESD5V0U1BL-7B](#) [DRTR5V0U4SL-7](#)
[SCM1293A-04SO](#) [ESD200-B1-CSP0201 E6327](#) [SM12-7](#) [SMF8.0A-TP](#) [SMLJ45CA-TP](#) [CEN955 W/DATA](#) [82350120560](#) [VESD12A1A-](#)
[HD1-GS08](#) [CPDUR5V0R-HF](#) [CPDQC5V0U-HF](#) [CPDQC5V0USP-HF](#) [CPDQC5V0-HF](#) [D1213A-01LP4-7B](#) [D1213A-02WL-7](#)
[1SMB33CAT3G-XYZ](#) [MMAD1108/TR13](#) [5KP100A](#) [5KP15A](#) [5KP18A](#) [5KP48A](#)