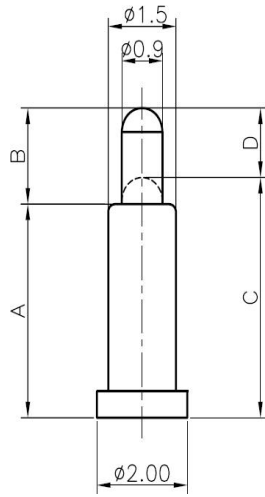
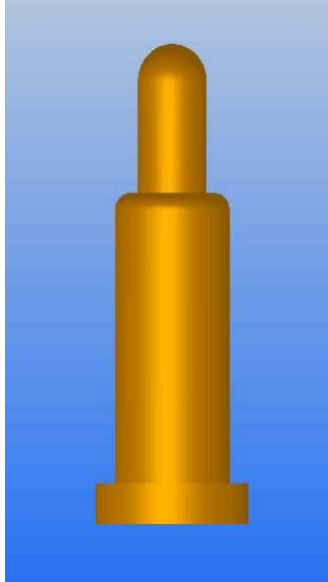


# 怡远科技POGO PIN产品规格书



## NOTE

### 1. Material

Plunger: Brass C6801  
Barrel: Brass C6801  
Spring: SUS304

### 2. Plating

Plunger: 10 micro- inch Au over 50~120 micro- inch nickel  
Barrel: 5 micro- inch Au over 50~120 micro- inch nickel

### 3. Electrical

Rated current & voltage: DC 12V; 1.5A Max.  
Contact resistance: 100 mohm maximum

### 4. Mechanical

Spring force:  $100g \pm 20g$  at normal working height  
Durability: 10,000 cycles(minimum)

## 怡远科技POGO PIN单针选型表

Type	A	B	C	D	Working Height	弹力/阻抗	Part Number
1510	1.5	0.5	1.65	0.35	1.65	100±20g/1.5A	YTC1P-1510-01
1807	1.8	0.7	1.95	0.55	1.95	100±20g/1.5A	YTC1P-1807-01
2010	2.0	1.0	2.30	0.7	2.30	100±20g/1.5A	YTC1P-2010-01
2510	2.5	1.0	2.7	0.8	2.70	100±20g/1.5A	YTC1P-2510-01
3010	2.5	1.0	3.2	0.8	3.20	100±20g/1.5A	YTC1P-3010-01
3015	3.0	1.5	3.5	1.0	3.50	100±20g/1.5A	YTC1P-3015-01
3515	3.5	1.5	3.7	1.3	3.70	100±20g/1.5A	YTC1P-3515-01
4015	4.0	1.5	4.2	1.3	4.20	100±20g/1.5A	YTC1P-4015-01
4020	4.0	2.0	4.6	1.4	4.60	100±20g/1.5A	YTC1P-4020-01
4520	4.5	2.0	5.1	1.4	5.10	100±20g/1.5A	YTC1P-4520-01
5020	5.0	2.0	5.6	1.4	5.60	100±20g/1.5A	YTC1P-5020-01
5025	5.0	2.5	5.6	1.9	5.60	100±20g/1.5A	YTC1P-5025-01
6020	6.0	2.0	6.5	1.5	6.50	100±20g/1.5A	YTC1P-6020-01
6025	6.0	2.5	7.0	1.5	7.00	100±20g/1.5A	YTC1P-6025-01
6030	6.0	3.0	7.5	1.5	7.50	100±20g/1.5A	YTC1P-6030-01
6530	6.5	3.0	8.0	1.5	8.00	100±20g/1.5A	YTC1P-6530-01
8020	8.5	1.5	9.0	1.0	9.00	100±20g/1.5A	YTC1P-8020-01
8025	8.5	2.0	9.5	1.0	9.50	100±20g/1.5A	YTC1P-8025-01
8525	8.5	2.5	10.0	1.0	10.0	100±20g/1.5A	YTC1P-8525-01
8530	8.5	3.0	10.5	1.0	10.5	100±20g/1.5A	YTC1P-8530-01
8535	8.5	3.5	11.0	1.0	11.0	100±20g/1.5A	YTC1P-8535-01
8540	8.5	4.0	11.5	1.0	11.5	100±20g/1.5A	YTC1P-8540-01

## X-ON Electronics

Largest Supplier of Electrical and Electronic Components

*Click to view similar products for [Contact Probes](#) category:*

*Click to view products by [YIYUAN](#) manufacturer:*

Other Similar products are found below :

[CT5253](#) [S-4-C-5-G S/C](#) [SS-75-B-2.4-G](#) [ICT-100-J-17-G](#) [300106-000-1103](#) [ICT-100-A-8-G S/C](#) [ICT-075-B-10-G-S S/C](#) [S-2-D-8.3-G D/C](#)  
[ICT-100-T-8-G S/C](#) [GSS-4-7-G](#) [S-0-B9-2.5-G S/C](#) [SS-40-J-2.4-G D/C](#) [S-0-V-3.7-G S/C](#) [SX-1-U-6.6-G D/C](#) [SS-50-J-5.1-G S/C](#) [SS-40-J-1.8-](#)  
[G-N/L D/C](#) [SS-3-7-G S/C W/HOLE .373 OAL](#) [SS-10-7-G S/C W/HOLE .373 OAL](#) [SS-1-7-G S/C W/HOLE .385 OAL](#) [SHE-5-H-18.7-G](#)  
[SHE-5-B-18.7-G](#) [SHE-3-A-7-G](#) [SH-4-A-10-G S/C](#) [101057-001-952](#) [S-50C-HS-4.3-DG-S](#) [S-5-F-8-G S/C SS SPGS](#) [S-5-F-16.4-G S/C](#) [S-4-K-](#)  
[5-G S/C](#) [S-4-E-5-D S/C](#) [S-2-J-8.3-G D/C](#) [S-2-E-10-D D/C](#) [S-2-A-10-D D/C](#) [S-100-UR-5.5-G-S](#) [S-100-T-8-RT](#) [S-100-J-17-G](#) [S-100-HK-10-](#)  
[G](#) [S-100-D-6.7-G](#) [S-100-B-3.5-G-S](#) [S-100-B-3.5-G](#) [S-1-U-6.6-D D/C .670 OAL](#) [S-1-A-6.6-D D/C .670 OAL](#) [S-075-S-3.8-RT](#) [S-075-J-3-G](#) [S-](#)  
[075-B-3-G](#) [S-075-A-7-G](#) [S-00-U-1.6-G D/C SS SPG](#) [S-00-ES-2-G D/C](#) [S-0-U-3.7-D S/C](#) [RX-100-SC](#) [RH-100-WW-429](#)