

版本	变更内容	工程确认	日期

A

A

B

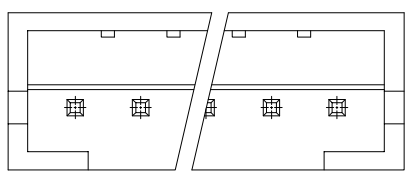
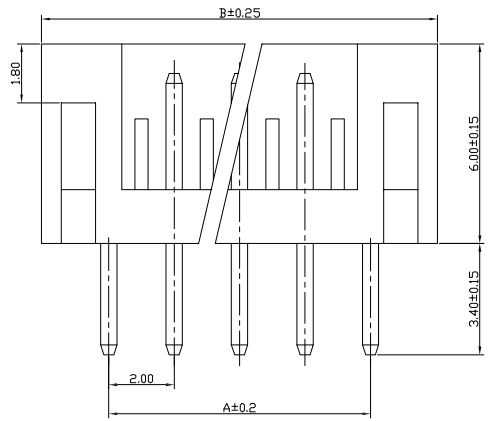
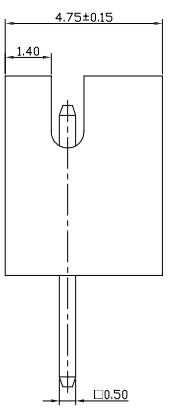
B

C

C

D

D



16	YTC-HAA200A-16A	30.0	34.0
15	YTC-HAA200A-15A	28.0	32.0
14	YTC-HAA200A-14A	26.0	30.0
13	YTC-HAA200A-13A	24.0	28.0
12	YTC-HAA200A-12A	22.0	26.0
11	YTC-HAA200A-11A	20.0	24.0
10	YTC-HAA200A-10A	18.0	22.0
9	YTC-HAA200A-9A	16.0	20.0
8	YTC-HAA200A-8A	14.0	18.0
7	YTC-HAA200A-7A	12.0	16.0
6	YTC-HAA200A-6A	10.0	14.0
5	YTC-HAA200A-5A	8.0	12.0
4	YTC-HAA200A-4A	6.0	10.0
3	YTC-HAA200A-3A	4.0	8.0
2	YTC-HAA200A-2A	2.0	6.0
Circuits	180°	A	B
	Part NO.	Dimension (MM)	

Dimensional&Drdering Information

poles	2-16Poles
Pitch between ploes	2.0MM
Rated Voltage	100V AC.DC
Rated current	2.0A
Withstand Voltage	800V.AC/minuts
Insulation Resistance	≥1000MΩ
Temperature Range	-25℃~+85℃
Applicable Wire	AWG#24 ~#32

**yi YUAN** 深圳市怡远科技有限公司  
SHENZHEN YIYUAN TECHNOLOGY CO.,LTD

品名 (ITEM NO)	2.0间距直针 WAFER DIP TYPE
料号 (PART NO)	YTC-HAA200A-**A
图号 (DWG NO)	

These drawings and specifications are Shenzhen Yiyuan Technology Co Ltd.The property should not be copied. Without Shenzhen Yiyuan Technology Co. Ltd.Prior written consent to copy or use in any way. Email at info@yiyuanswitches.com

页码 (SHEET)	1/1	单位(UNIT): MM
版本 (REV)	A1	比例(SCALE)
日期 (DATE)	2021. 10. 12	
设计 (DESIGN)	LUO	GENERAL TOLERANCE *** ±0.08 ** ±0.15 * ±0.25
审核 (CHECKED)	ROGER LI	
核准 (APPROVED)	ROC ZHAO	

E

E

F

F

## X-ON Electronics

Largest Supplier of Electrical and Electronic Components

*Click to view similar products for [Headers & Wire Housings](#) category:*

*Click to view products by [YIYUAN](#) manufacturer:*

Other Similar products are found below :

[57102-F02-18ULF](#) [58102-G61-06LF](#) [582553-1](#) [009176003701906](#) [01.001.5753.1](#) [0050291907](#) [02.125.8002.8](#) [609-3404](#) [61062-3](#)  
[CSU011177004](#) [622-0430](#) [622-3653LF](#) [63453-116](#) [636-1030](#) [636-1427](#) [636-3427](#) [636-4007](#) [641938-9](#) [644827-2](#) [65495-038](#) [65692-001LF](#)  
[65781-018](#) [65781-047](#) [65817-010LF](#) [65817-015LF](#) [66207-023LF](#) [67095-007LF](#) [67601157](#) [68631-112](#) [68645-018](#) [699319-000](#)  
[M90C108951C](#) [70.362.1628.0](#) [70-4210](#) [70-4226B](#) [70-4853B](#) [707-5028](#) [71.350.2428.0](#) [71961-016LF](#) [733-134](#) [733-162](#) [754199-000](#) [760-](#)  
[3052](#) [80.063.4001.1](#) [800-90-001-10-001000](#) [800-90-010-10-002000](#) [801-43-002-10-013000](#) [801-43-006-10-002000](#) [803-41-018-10-001000](#)  
[803-43-024-10-001000](#)