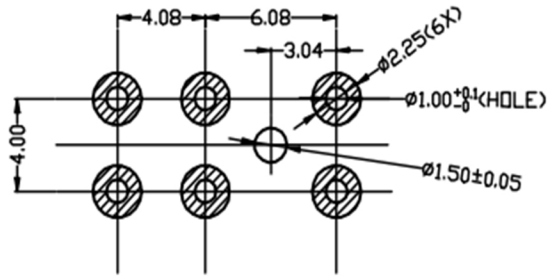


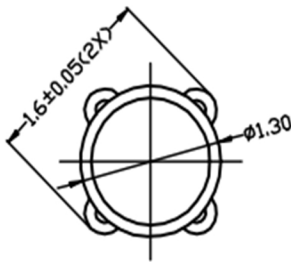
RoHS

CAD GENERATED DRAWING. DON'T CHANGE BY HAND.

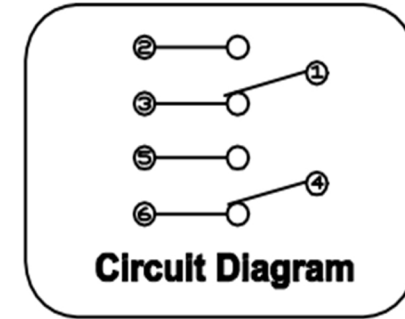
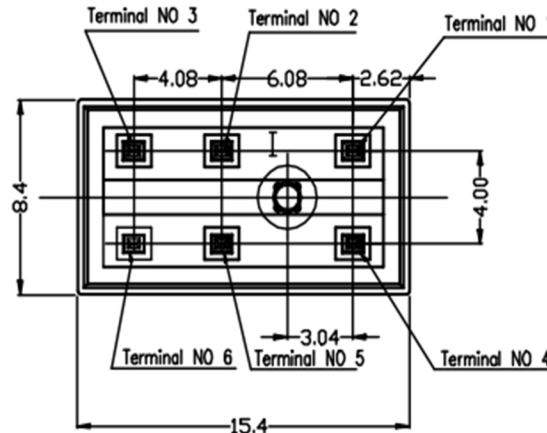
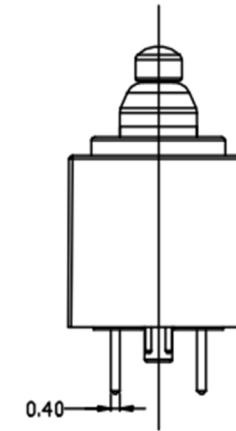
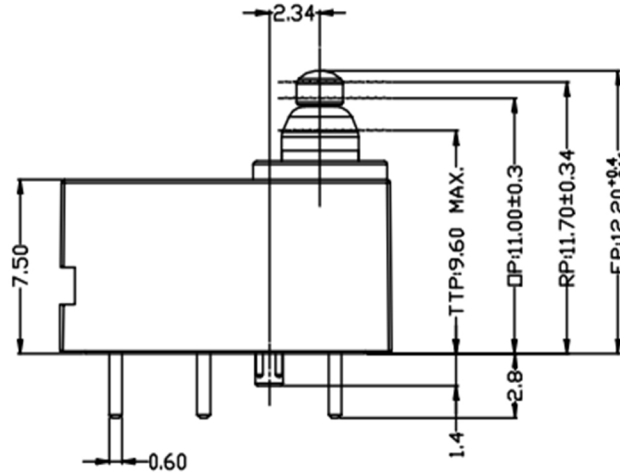
REV. ECN. NO. APPD.



PCB LAYOUT



DETAIL I
Scale:5:1



Technical Description(技术要求) :

- 1, This switch refer to hereinafter parameterslist for detailed parameters(本开关具体请参考参数表)
- 2, All the material meet ROHS(所有材料要符合ROHS)

CHARACTERISTICS		ELECTRICAL DATA CONTACT ARRANGEMENT	
Operating Force:	150gf Max.(50gf Min)	D.P.D.T	
Free Position:	12.2 ^{+0.4} _{-0.16} mm		
Operation Position:	11±0.3 mm		
Release Position:	11.7±0.34mm	12V DC 0.1A	
Total Travel Position:	9.6mm Max.	5V DC 50 μA	

X.	± 0.50	X. °	± 2°	UNITS
.X	± 0.30	.X°	± 1°	mm
.XX	± 0.10	.XX°	± 0.5°	MAT'L
.XXX	± 0.05			FINISH
				Q' TY

THESE DRAWINGS AND SPECIFICATIONS ARE THE PROPERTY OF YIYUAN TECHNOLOGY CO.,LTD AND SHALL NOT BE REPRODUCED, COPIED OR USED IN ANY MANNER WITHOUT THE PRIOR WRITTEN CONSENT OF YIYUAN TECHNOLOGY CO.,LTD

yi YUAN		深圳市怡远科技有限公司 SHENZHEN YIYUAN TECHNOLOGY CO., LTD	
PART NO. YTD-307-PA00		TITLE: DETECT SWITCH	
APPD: ROGER		DWG NO. : YTD-307-PA00	
CHKD: ROC		SCALE SHEET REV.	
DR: BILLY WANG 2020/08/21		1/1 1/1 A1	

X-ON Electronics

Largest Supplier of Electrical and Electronic Components

Click to view similar products for [Basic / Snap Action Switches](#) category:

Click to view products by [YIYUAN](#) manufacturer:

Other Similar products are found below :

[5SM901-S12](#) [5SM9-S12N195](#) [602EN532](#) [602EN535-RB](#) [602HE5-RB1](#) [604HE162](#) [604HE223-6B](#) [624HE17-RB](#) [6HM82](#) [6HM89](#) [6SE1](#)
[6SX1-H58](#) [70500216](#) [70599106](#) [71051](#) [MBH2731](#) [79211923](#) [79218589](#) [7AS12](#) [MIL30126AB6BBMD4A12XAU](#) [ML-1155](#) [ML-1376](#)
[831010C3.0](#) [831090C2.EL](#) [83131904](#) [84212012](#) [8AS239](#) [8HM73-3](#) [8SX26-H33](#) [914CE1-6G](#) [PL-100](#) [11SM1077-H4](#) [11SM1077-H58](#)
[11SM1-TN107](#) [11SM405](#) [11SM8423-H2](#) [11SX37-T](#) [11SX48-H58](#) [11SM2442-T](#) [11SM76-T](#) [11SM77-H58](#) [11SM863-T](#) [11SM866](#) [A7CN-](#)
[1M-1-LEFT](#) [A831700C7.0](#) [121EN188-R](#) [1245.0120](#) [125EN56-RB](#) [1267.0101](#) [1267.7101](#)