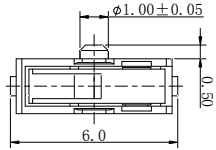


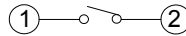
1	2	3	4	5	6	7	8	9	10	11	12	13	14	15
---	---	---	---	---	---	---	---	---	----	----	----	----	----	----

ROHS
Compatible

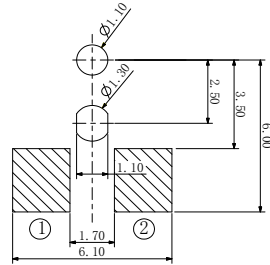
REV (版本)	MARK (标记)	DESCRIPTION (描述)	DATE (日期)	APPROVED (批准)



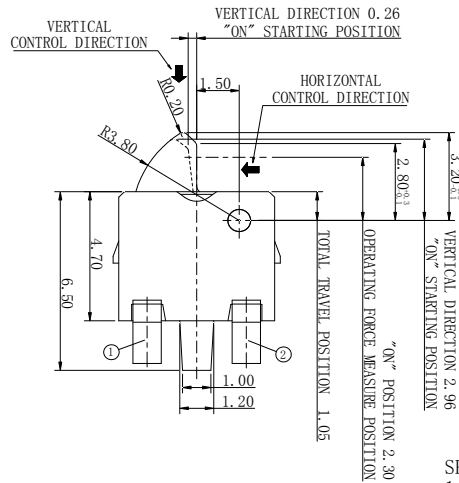
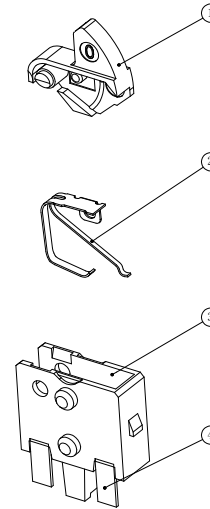
ELECTRICAL DIAGRAM



PCB WELDING DIMENSIONS



MATERIAL PORTFOLIO CHART



REFERENCE DRAWING

SPECIFICATION

1. Rating: DC 20V 50mA
2. Contact resistance: 1Ω Max.
3. Insulation resistance: 100MΩ Min, 100V/min
4. Dielectric strength: 100V AC/min
5. Operating force: 50gf Max.
6. Operating life: 50,000 cycles
7. Operating temp: -10°C to +60°C
8. Storage temp: -20°C to +70°C

NO (序号)	PART NAME (部件名)	QTY (数量)	MATERIAL (材料)	REMARK (备注)
4	TERMINAL (端子)	1	PHOSPHOR	Ag plating
3	HOUSING (底座)	1	PA	Black
2	CONTACT (动触点)	1	SUS	Ag plating
1	STEM (按钮)	1	LCP	Black
	SCALE: 10:1			
	VIEW: 视图			
	UNIT: mm			



深圳市怡远科技有限公司
SHENZHEN YIYUAN TECHNOLOGY CO. LTD

UNSPECIFIED TOLERANCE (未指定的公差)	DRAWN (制图)	DATE (日期)
ANGULAR (角度)	CHD	2021.03.18
16 < L ≤ 63	审核	2021.03.18
4 < L ≤ 16	APVD	2021.03.18
L ≤ 4	批准	

SCALE (比例)	VIEW (视图)	UNIT (单位)
10:1		mm

ITEM (产品类型)	PART NO (型号)	DWG. NO (图号)	REMARK (备注)
DETECTION SWITCH	6x6.5检测开关	YTL-M01L-AA	

X-ON Electronics

Largest Supplier of Electrical and Electronic Components

Click to view similar products for [Basic / Snap Action Switches](#) category:

Click to view products by [YIYUAN](#) manufacturer:

Other Similar products are found below :

[5SM901-S12](#) [5SM9-S12N195](#) [602EN532](#) [602EN535-RB](#) [602HE5-RB1](#) [604HE223-6B](#) [624HE17-RB](#) [6HM82](#) [6SE1](#) [6SX1-H58](#) [71051](#) [714-0293](#) [MBH2731](#) [79211923](#) [79218589](#) [MIL30126AB6BBMD4A12XAU](#) [ML-1155](#) [ML-1376](#) [831010C3.0](#) [831090C2.EL](#) [83131904](#) [84212012](#) [8AS239](#) [8HM73-3](#) [8SX26-H33](#) [914CE1-6G](#) [11SM1077-H4](#) [11SM1077-H58](#) [11SM1-TN107](#) [11SM405](#) [11SM703-T](#) [11SM8423-H2](#) [11SX37-T](#) [11SX48-H58](#) [11SM2442-T](#) [11SM76-T](#) [11SM77-H58](#) [11SM77-T](#) [11SM863-T](#) [11SM866](#) [121EN188-R](#) [1245.0120](#) [125EN56-RB](#) [D433V3RD](#) [1267.0101](#) [1267.7101](#) [D4BFC1](#) [12SM4-T2](#) [12SX2-T2](#) [1298.0101](#)