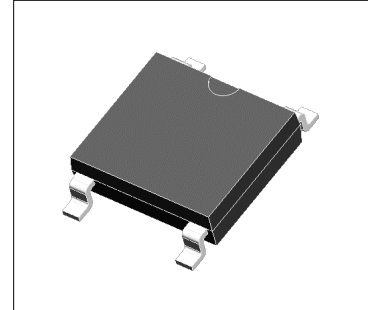


Bridge Rectifiers

ABS202—ABS210

Features

- ◆ Plastic package has Underwriters Laboratory Flammability Classification 94V-0
- ◆ Ideal for printed circuit boards
- ◆ Glass passivated chip junction
- ◆ High forward surge capability



Mechanical Data

Case: ABS Molded plastic body

Terminals: Plated leads solderable per MIL-STD-750, Method 2026

High temperature soldering guaranteed: 260°C/10 seconds

Mounting Position: Any

Maximum Ratings & Electrical Characteristics

Ratings at TA = 25°C unless otherwise specified

Characteristic	Symbol	ABS202	ABS204	ABS206	ABS208	ABS210	Units
Peak repetitive reverse voltage	VRRM	200	400	600	800	1000	V
RMS reverse voltage	VRMS	140	280	420	560	700	V
DC blocking voltage	VDC	200	400	600	800	1000	V
Maximum average forward output current	IF(AV)	2					A
Peak forward surge current, 8.3ms single half-sine-wave, @TJ = 25°C	IFSM	60					A
Rating for fusing (t<8.3ms)	I2t	14.94					A2sec
Maximum instantaneous forward voltage @ 1A	VF	1.0					V
Maximum Reverse current Rated VR	IR	@TA =25°C					μ A
		@TA =125°C					
		5					
		50					

Thermal Characteristics

Characteristic	Symbol	ABS202	ABS204	ABS206	ABS208	ABS210	Units
Typical thermal resistance (Note 1)	R θJA	80					°C/W
	R θJL	25					
Operating junction temperature range	TJ	- 55 ---- + 150					°C
Storage temperature range	TSTG	- 55 ---- + 150					°C

Note

(1) Units mounted on PCB with 0.47×0.47(12×12mm) Copper Pads

Bridge Rectifiers

ABS202—ABS210

Ratings and Characteristic Curves ($T_A=25^\circ\text{C}$ unless otherwise noted)

Fig.1-Forward Current Derating Curve

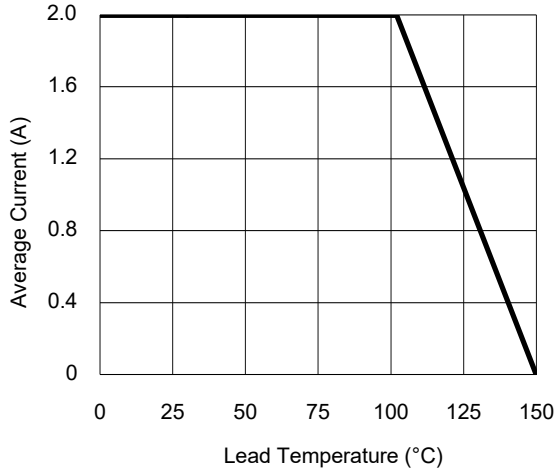


Fig.2- Surge Current Derating Curve

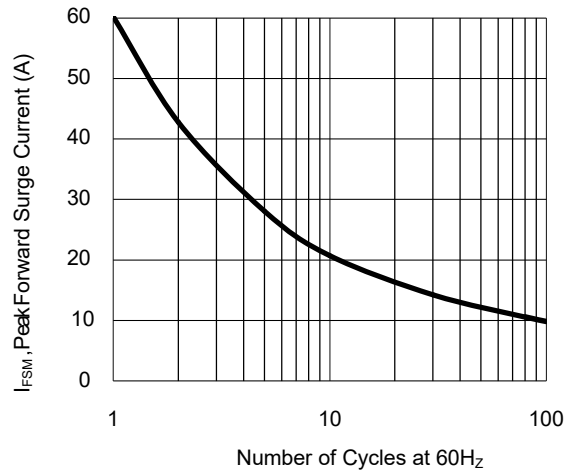


Fig.3- Typical Forward Voltage Characteristic

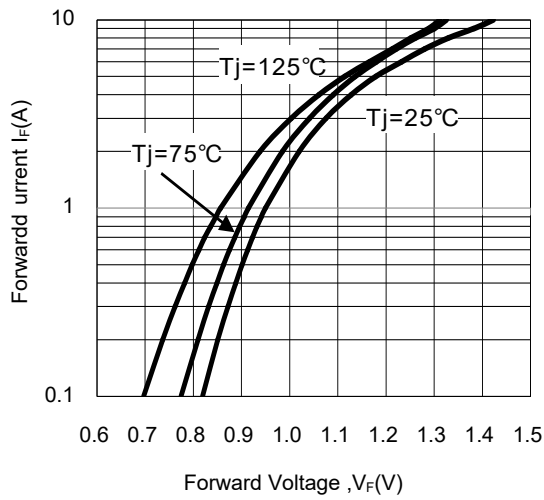
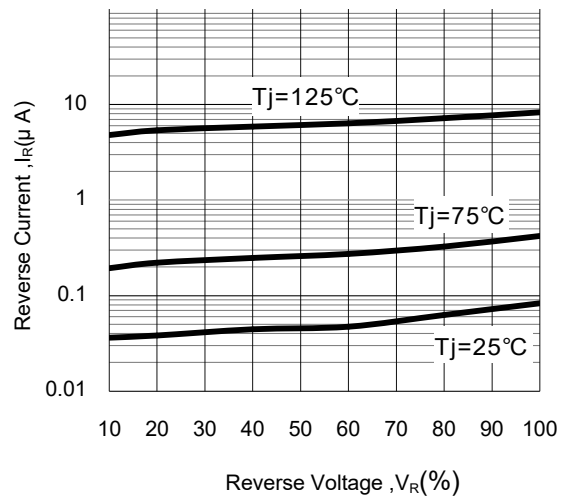


Fig.4- Typical Reverse Characteristic

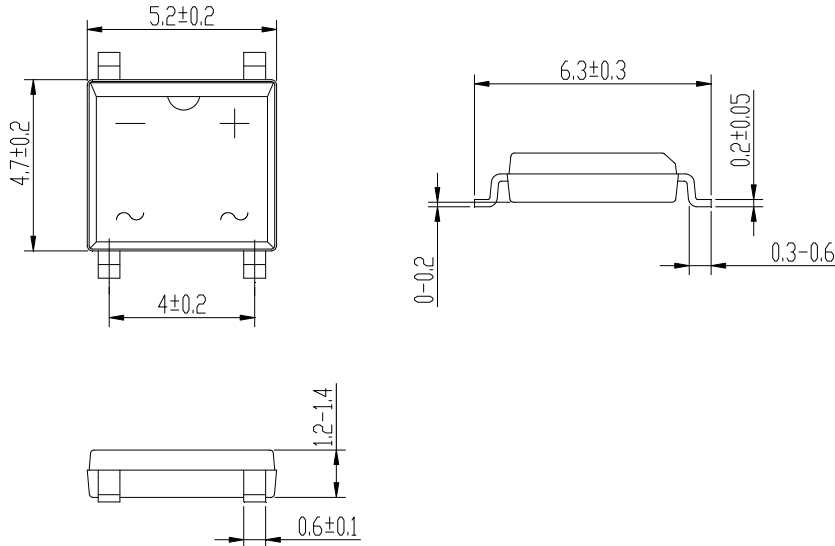


Bridge Rectifiers

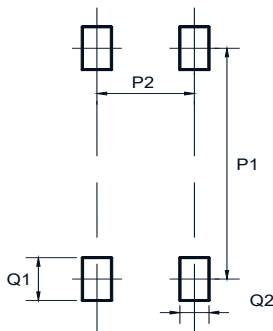
ABS202—ABS210

Package Outline Dimensions(unit:mm)

ABS



Mounting Pad Layout(unit:mm)



Dim	Min
P1	5.7
P2	4.0
Q1	1.0
Q2	0.9

Ordering Information

Part No.	Marking	Package	Shipping
ABS202	ABS202	ABS	5000PCS /Tape&Reel
ABS204	ABS204	ABS	5000PCS /Tape&Reel
ABS206	ABS206	ABS	5000PCS /Tape&Reel
ABS208	ABS208	ABS	5000PCS /Tape&Reel
ABS210	ABS210	ABS	5000PCS /Tape&Reel

X-ON Electronics

Largest Supplier of Electrical and Electronic Components

Click to view similar products for [Bridge Rectifiers](#) category:

Click to view products by [Yjsemi](#) manufacturer:

Other Similar products are found below :

[MB2510](#) [MB252](#) [MB356G](#) [MB358G](#) [MP358-BP](#) [90MT160KPBF](#) [GBJ1504-BP](#) [GBU10B-BP](#) [GBU15J-BP](#) [GBU15K-BP](#) [GBU4A-BP](#)
[GBU4D-BP](#) [GSIB680-E3/45](#) [DB101-BP](#) [DF01](#) [DF10SA-E345](#) [BU1508-E3/45](#) [BU1510-E3/45](#) [KBPC50-10S](#) [RS405GL-BP](#) [G5SBA60-](#)
[E3/51](#) [GBJ1502-BP](#) [GBU10J-BP](#) [GBU4J-BP](#) [GBU6M](#) [GBU8D-BP](#) [GBU8J-BP](#) [GSIB1520-E3/45](#) [TB102M](#) [MB1510](#) [MB6M-G](#) [MB86](#)
[TL401G](#) [MDA920A2](#) [TU602](#) [TU810](#) [MP501W-BP](#) [MP502-BP](#) [BR1005-BP](#) [BR101-BP](#) [BR84DTP204](#) [BU1010A-E3/51](#) [BU1508-E3/51](#)
[BU2006-E3/45](#) [BU2008-E3/51](#) [US15KB80R-7000](#) [KBPC25-02](#) [VS-60MT120KPBF](#) [DB105-BP](#) [DF1510S](#)