

■ Features

- Molding Inductor.
- Low Profile,Low Temp.
- Large Current(Over 15A).
- Customize For Different Need.
- Operating temperature:-40℃ ~ +125℃.

■ Applications

- General Electronic.
- Video Device,TV,TFT.
- Power Module for PC.
- NB/Lap Top Computer.
- Server,VGA Card/Module.

■ Product Identification

$\frac{\text{YSPI}}{(1)}$ $\frac{\square\square\square\square}{(2)}$ - $\frac{\square\square\square}{(3)}$ $\frac{\square}{(4)}$

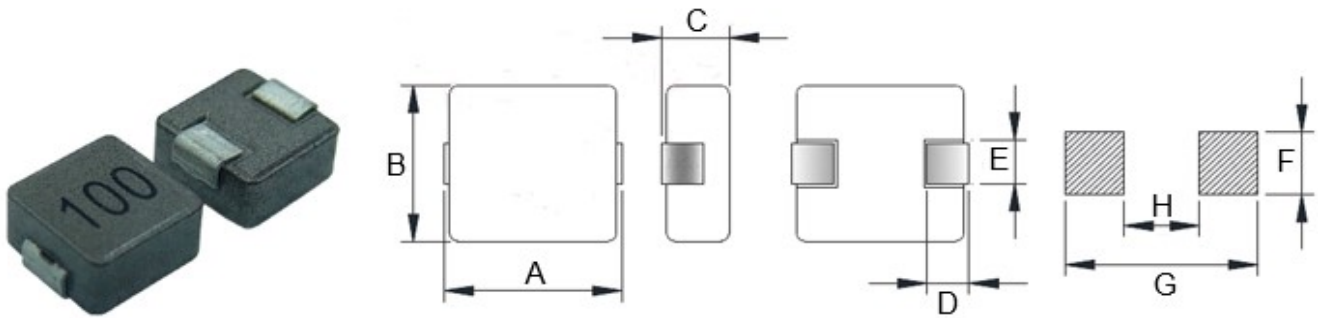
(1) : Type

(2) : Dimensions

(3) : Inductance value

(4) : Inductance Tolerance: N=±30%,M=±20%, K=±10%

■ Shapes and Dimensions (Unit: mm)



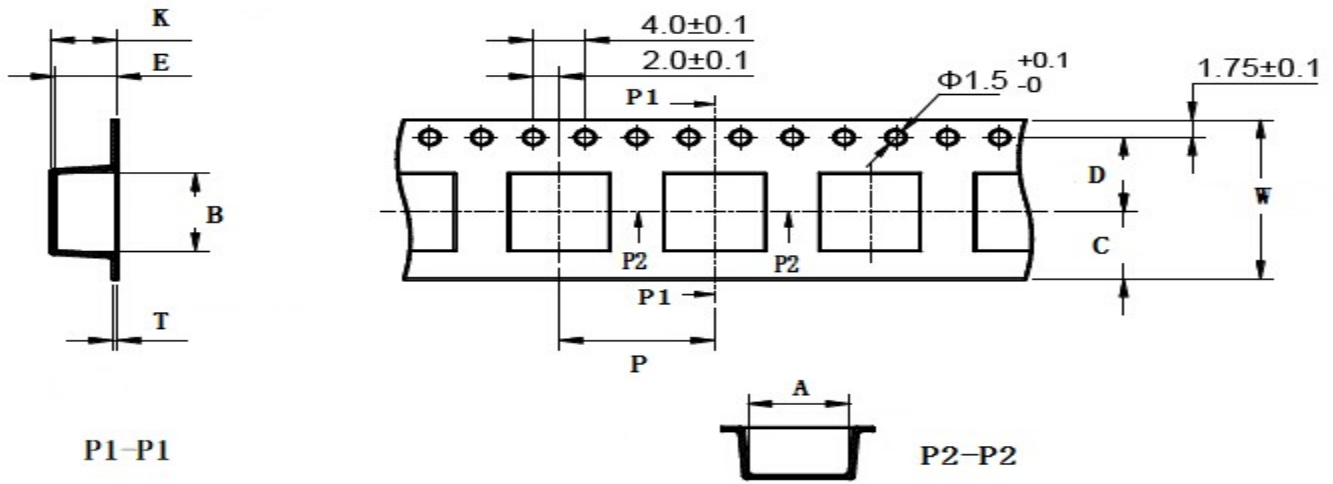
| TYPE | A | B | C Max. | D | E Ref. | F Ref. | G Ref. | H Ref. |
|----------|----------|----------|--------|---------|---------|--------|--------|--------|
| YSPI1350 | 13.8±0.5 | 12.6±0.5 | 5.0 | 2.5±0.5 | 3.5±0.5 | 4.5 | 14.5 | 8.0 |

■ YSPI1350 Series

| Part Number | Inductance (uH) @100KHz | DC Resistance (mΩ) | | Heat Rating Current (A) | Saturation Current (A) |
|---------------|----------------------------|--------------------|--------|----------------------------|---------------------------|
| | | Typ. | Max. | | |
| YSPI1350-R36□ | 0.36 | 0.72 | 1.70 | 35.0 | 70.0 |
| YSPI1350-R47□ | 0.47 | 1.60 | 2.50 | 30.0 | 60.0 |
| YSPI1350-R56□ | 0.56 | 2.30 | 3.50 | 25.0 | 45.0 |
| YSPI1350-R68□ | 0.68 | 2.50 | 4.00 | 24.0 | 44.0 |
| YSPI1350-R82□ | 0.82 | 2.70 | 4.50 | 22.0 | 42.0 |
| YSPI1350-1R0□ | 1.00 | 3.10 | 5.00 | 22.0 | 28.0 |
| YSPI1350-1R5□ | 1.50 | 3.70 | 8.00 | 15.0 | 24.0 |
| YSPI1350-2R2□ | 2.20 | 5.20 | 11.00 | 13.0 | 23.0 |
| YSPI1350-3R3□ | 3.30 | 6.90 | 10.00 | 12.0 | 20.0 |
| YSPI1350-4R7□ | 4.70 | 10.00 | 13.00 | 12.0 | 18.0 |
| YSPI1350-6R8□ | 6.80 | 13.10 | 17.00 | 9.0 | 14.0 |
| YSPI1350-100□ | 10.0 | 21.00 | 28.00 | 7.0 | 13.0 |
| YSPI1350-150□ | 15.0 | 32.00 | 41.00 | 6.0 | 9.0 |
| YSPI1350-220□ | 22.0 | 51.00 | 66.00 | 5.0 | 7.0 |
| YSPI1350-330□ | 33.0 | 65.00 | 84.00 | 5.0 | 5.5 |
| YSPI1350-470□ | 47.0 | 85.00 | 110.00 | 4.0 | 4.5 |

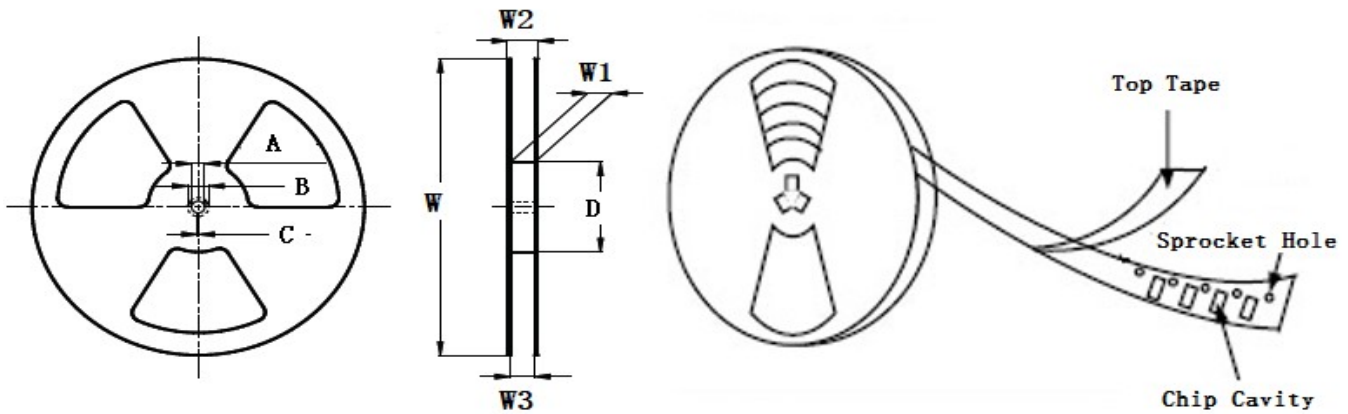
-
- ※ The saturation current value is the DC current value having inductance decrease down to 30%.(at 20°C)
 - ※ The temperature rise current value is the DC current value having temperature increase up to 40°C. (at 20°C)
 - ※ The rated current is the DC current value that satisfies both of current value saturation current value and temperature rise current value.

■ Taping Dimensions(Unit:mm)



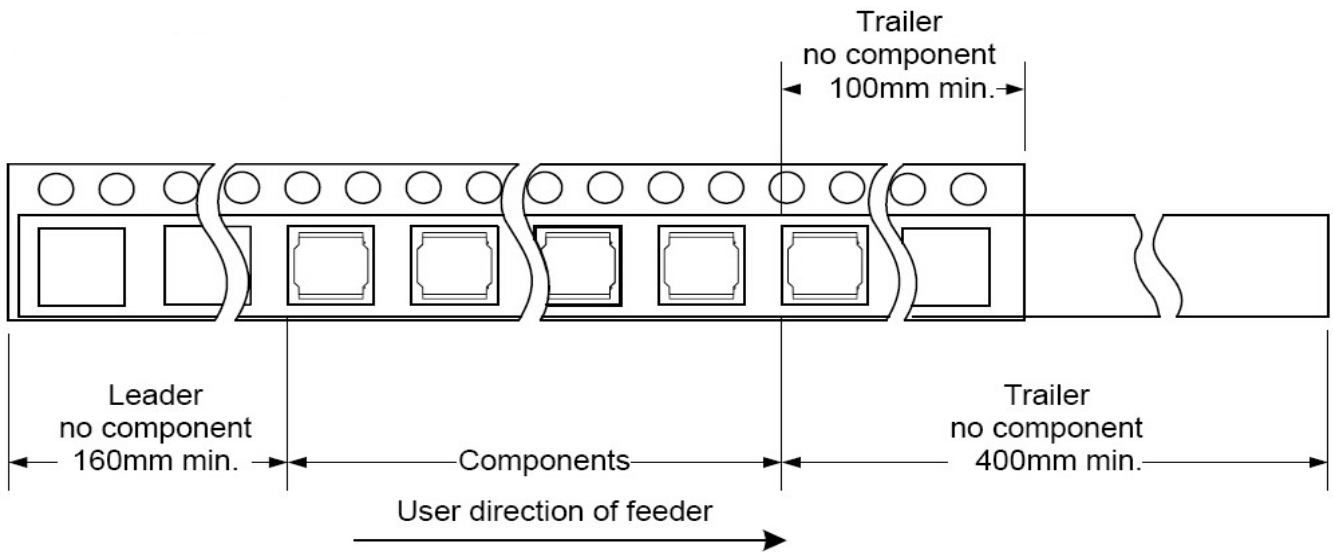
| TYPE | W | A | B | C | D | E | P | K Ref | T | MPQ |
|----------|--------|----------|-----------|-------|----------|---------|--------|-------|-----------|-----|
| YSPI1350 | 24±0.3 | 12.8±0.1 | 13.70±0.1 | 10.75 | 11.5±0.1 | 5.8±0.1 | 20±0.1 | 5.1 | 0.50±0.05 | 500 |

■ Reel Dimensions(Unit:mm)



| TYPE | W | W1 | W2 | W3 | A | B | C | D |
|----------|---------|----------|---------|----------|-----------|-----------|----------|---------|
| YSPI1350 | 330±2.0 | 24.4±1.5 | 30.4MAX | 23.9 Min | 13.0±0.50 | 21.0±0.80 | 2.0±0.50 | 100 Min |

Direction of rolling



Cover tape peel off condition



Cover tape peel force shall be 0.1N to 1.3N.

Reference peel speed 300 ± 10 mm/min.

X-ON Electronics

Largest Supplier of Electrical and Electronic Components

Click to view similar products for [Fixed Inductors](#) category:

Click to view products by [YJYCOIN](#) manufacturer:

Other Similar products are found below :

[MLZ1608M6R8WTD25](#) [MLZ1608N6R8LT000](#) [MLZ1608N3R3LTD25](#) [MLZ1608N3R3LT000](#) [MLZ1608N150LT000](#)

[MLZ1608M150WTD25](#) [MLZ1608M3R3WTD25](#) [MLZ1608M3R3WT000](#) [MLZ1608M150WT000](#) [MLZ1608A1R5WT000](#)

[MLZ1608N1R5LT000](#) [B82432C1333K000](#) [PCMB053T-1R0MS](#) [PCMB053T-1R5MS](#) [PCMB104T-1R5MS](#) [CR32NP-100KC](#) [CR32NP-](#)

[151KC](#) [CR32NP-180KC](#) [CR32NP-181KC](#) [CR32NP-1R5MC](#) [CR32NP-390KC](#) [CR32NP-3R9MC](#) [CR32NP-680KC](#) [CR32NP-820KC](#)

[CR32NP-8R2MC](#) [CR43NP-390KC](#) [CR43NP-560KC](#) [CR43NP-680KC](#) [CR54NP-181KC](#) [CR54NP-470LC](#) [CR54NP-820KC](#) [CR54NP-8R5MC](#)

[ET3542-057](#) [MGDQ4-00004-P](#) [MGDU1-00016-P](#) [MHL1ECTTP18NJ](#) [MHL1JCTTD12NJ](#) [PE-51506NL](#) [PE-53601NL](#) [PE-53630NL](#) [PE-](#)

[53824SNLT](#) [PE-62892NL](#) [PE-92100NL](#) [PG0434.801NLT](#) [PG0936.113NLT](#) [PM06-2N7](#) [PM06-39NJ](#) [HC2LP-R47-R](#) [HC2-R47-R](#) [HC3-2R2-](#)

[R](#)