

**CST&ZYC**

**深圳市永丰盈电子有限公司**

**ShenZhen Yongfengying Electronic Co.,Ltd**



# 承 认 书

## Specification For Approval

客 户 ：

振邦

Customer

品 名 ：

BH2.54 180度 加塑 H2.5 26pin L=17.35 PC3.7 PA6T 黑色镀金

/06P Description

料 號 ：

CS-1200-26B(L=17.35)

Product No.

客户料号：

Specification

文件版本号：

A/0 版

Document version NO.

核 准 Approval	审 核 Examine and verify	品质部 Quality Department	制 作 Producer
崔敏 2020/06/29	陈明斌 2020/06/29	钟文集 2020/06/29	李文畅 2020/06/29

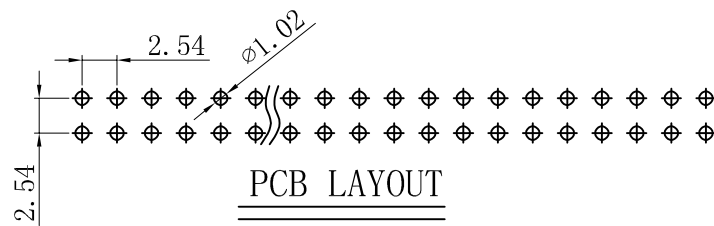
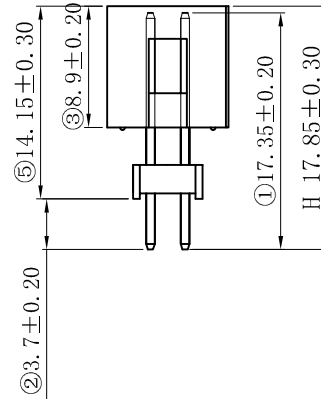
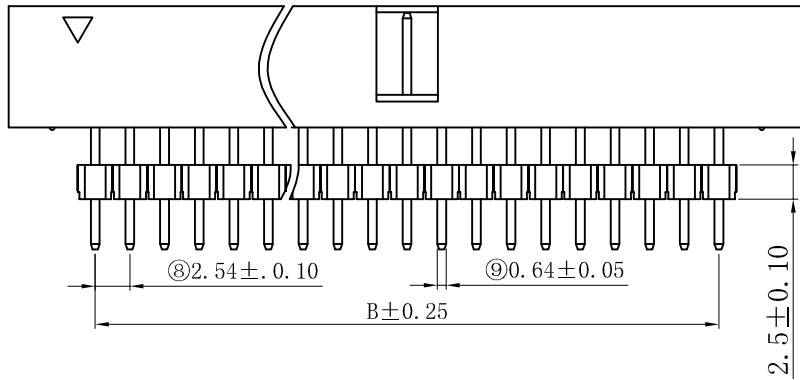
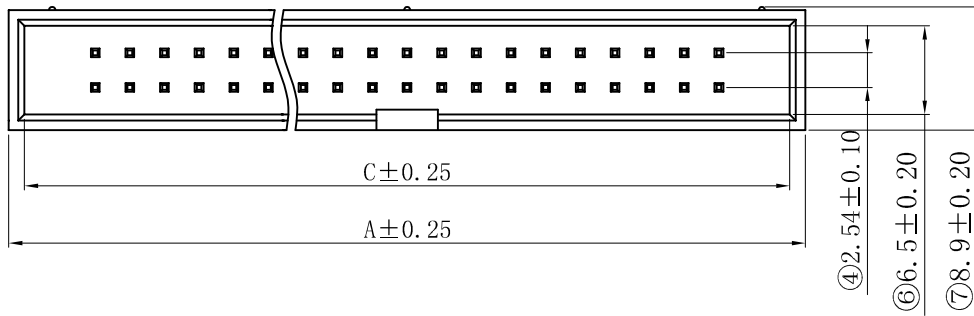
客户承认 ApprovedBy Customer		
采购部 Purchase	品保部 Quality Assurance	工程部 Engineering

公司 地 址： 深圳市坪山区金沙社区东联工业区 2 号厂房

公司电话 Tel: 0755-27492899

公司传真 Fax: 0755-23118201

公司网址 http//: www.szest.com.cn



NOTE:

MATERIAL

HOUSING: PA6T UL94V-0

CONTACT: C2680.

CONTACT PLATING: GOLD OVER Ni.

ELECTRICAL

CURRENT RATING: 3AMP.

VOLTAGE RATING: 250VAC/DC.

DIELECTRIC WITHSTANDING VOLTAGE: 600VAC MIN.

CONTACT RESISTANCE: 20mΩMAX.

INSULATION RESISTANCE: 1000MΩMIN.

ENVIRONMENTAL

TEMPERATURE RANGE: -40° C TO +105° C.

DIMENSION TABLE:

PIN	A(mm)	B(mm)	C(mm)	PIN	A(mm)	B(mm)	C(mm)
06	15.22	5.08	12.92	20	33.00	22.86	30.70
08	17.76	7.62	15.46	24	38.08	27.94	35.78
10	20.30	10.16	18.00	26	40.62	30.48	38.32
12	22.84	12.70	20.54	30	45.70	35.56	43.40
14	25.38	15.24	23.08	34	50.78	40.64	48.48
16	27.92	17.78	25.62	40	58.40	48.26	56.10
18	30.46	20.32	28.16	50	71.10	60.96	68.80

**ROHS2.0**

本图纸知识产权及版权由深圳市永丰盈电子有限公司所有,未经书面许可不准擅自传阅、复制和修改。本公司保留法律追究的权利。

类别	筒牛	品名	CS-1200-26B (L=17.35)	X.	±0.50	材料
版本	A/0	设计	李文畅	X.X	±0.20	颜色
制定部门	工程部	绘制	李文畅	X.XX	±0.10	画法
工程图号	CS-1200	审核		X.XXX	±0.05	
制定日期	2020/06/22	核准		X.XXXX	±0.01	

**CST** 深圳市永丰盈电子有限公司  
ShenZhenYongFengYing ELECTRONICS CO., LTD.

SHEET 1 OF 1		
▲	修改内容	修改日期
①		
②		
③		

CST

深圳市永丰盈电子有限公司  
ShenZhenYongFengYing ELEELECTRONICS CO., LTD.

LANGUAGE

CHINESE  
ENGLISH

# 產品規格書 PRODUCT SPECIFICATION

TITLE:								PART NO.		CS-1200X-XXXX					
筒牛 2.54mm pitch 双排 90/180 DIP 型								DWG NO.		XXX-XXXXX					
A				李文畅		陈明斌		崔敏		2020/05/05					
REV	MODIFICATION			WRITTEN		CHECKED		APPROVED		DATE					
THIS DOCUMENT CONTAINS INFORMATION THAT IS PROPRIETARY TO ShenZhenYongFengYing ELECTRONICS CO.,LTD								DOCUMENT		SHEET 1/6					
SHEET INDEX		REVISION SHEET	A	A	A	A	A	A							
			1	2	3	4	5	6							

贯彻制度 全员参与 持续改进 满足顾客



深圳市永丰盈电子有限公司  
ShenZhenYongFengYing ELELECTRONICS CO., LTD.

LANGUAGE

CHINESE  
ENGLISH

【1.适用范围 SCOPE】

本规格书适用于 筒牛 2.54mm pitch 双排 90/180/DIP 型 连接器产品。

This specification covers the Box header 2.54mm pitch single row & dual row DIP type connector series.

【2.产品名称与料号 PRODUCT NAME AND PART NUMBER】

产品名称 Product Name	产品料号 Parts Number
塑料组装(焊接型) 无铅 Housing Assembly (Straight Type) Lead Free	CS-1200X-XXXX

【3.额定 RATINGS】

项 目 Item	规 格 Standard	
额定电压 Rated Voltage	250V	【AC/DC】
额定电流 Rated Current	3A	
使用温度范围 Ambient Temperature Range	-40° C~+105° C	

TITLE:		PART NO.	CS-1200X-XXXX														
筒牛 2.54mm pitch 双排 90/180 DIP 型		DWG NO.	XXX-XXXXX														
A		李文畅	陈明斌	崔敏	2020/05/05												
REV	MODIFICATION	WRITTEN	CHECKED	APPROVED	DATE												
THIS DOCUMENT CONTAINS INFORMATION THAT IS PROPRIETARY TO ShenZhenYongFengYing ELECTRONICS CO.,LTD				DOCUMENT	SHEET 2/6												
SHEET INDEX	REVISION SHEET	A	A	A	A	A	A										
		1	2	3	4	5	6										

贯彻制度 全员参与 持续改进 满足顾客

<b>CST</b> 深圳市永丰盈电子有限公司 ShenZhenYongFengYing ELEELECTRONICS CO.,LTD.	LANGUAGE
	CHINESE ENGLISH

**【4.性能 PERFORMANCE】**

**4-1.电气性能 Electrical Performance**

项 目 Item	条 件 Condition	规 格 Standard
4-1-1 接触阻抗 Contact Resistance EIA 364-23	连接器在配合排针母座的状态下进行测试： 测试电流：100mA(MAX). 测试电压：20mV (MAX). Mate applicable female header, measure by dry circuit, 20mV MAX, 100mA MAX.	20m Ω MAX
4-1-2 绝缘阻抗 Insulation Resistance EIA 364-21	连接器在配合排针母座的状态下进行测试： 在相邻两端子之间加电压 600V DC，保持 1 分钟。 Mate applicable female header, apply 600V DC between for 1 minute adjacent terminal or ground.	1000M Ω MIN
4-1-3 耐电压 Dielectric Strength EIA 364-20	连接器在配合排针母座的状态下进行测试： 在相邻两端子之间加电压 600V AC，保持 1 分钟。 Mate applicable female header, apply 600V AC for 1 minute between adjacent terminal or ground.	无故障 No Breakdown

**4-2.机械性能 Mechanical Performance**

项 目 Item	条 件 Condition	规 格 Standard
4-2-1 插入力(单/PIN) Insertion Force	插入力的标准测量速度为 25±3mm 每分钟。 Insert and withdraw the standard gauge at the speed rate of 25±3mm/minute.	0N{0kgf}
4-2-2 拔出力(单/PIN) Withdrawal Force	插入力的标准测量速度为 25±3mm 每分钟。 Insert and withdraw the standard gauge at the speed rate of 25±3mm/minute.	0N{0kgf}
4-2-3 端子与塑料保持力 (单/PIN) Terminal/Housing Retention Force EIA 364-29	以每分钟 25±3mm 的速度将端子从塑料中垂直拔出。 Pull out the terminal from the housing at speed 25±3mm per minute.	焊前 7.84N {0.8kgf} MIN

TITLE:		PART NO.	CS-1200X-XXXX	
筒牛 2.54mm pitch 双排 90/180 DIP 型		DWG NO.	XXX-XXXXX	
A		李文畅	陈明斌	崔 敏
REV	MODIFICATION	WRITTEN	CHECKED	APPROVED
THIS DOCUMENT CONTAINS INFORMATION THAT IS PROPRIETARY TO ShenZhenYongFengYing ELECTRONICS CO.,LTD			DOCUMENT	SHEET
				3/6
SHEET INDEX	REVISION SHEET	A	A	A
		1	2	3
		4	5	6

贯彻制度 全员参与 持续改进 满足顾客

<b>CST</b> 深圳市永丰盈电子有限公司 ShenZhenYongFengYing EEELECTRONICS CO.,LTD.	LANGUAGE
	CHINESE ENGLISH

4-3. 环境性能与其它 Environmental Performance and other

项 目 Item		条 件 Condition	规 格 Standard	
4-3-1	耐热性 Heat Resistance  EIA 364-17 Test Condition 3 Method A	温度 105±5° C, 持续时间 96 小时. 105±5° C, 96hours.	外 观 Appearance	无损伤 No damage
			接触阻抗 Contact Resistance	20 mΩ MAX
4-3-2	耐寒性 Cold Resistance	温度-40±5° C, 持续时间 96 小时. -40±5° C, 96hours.	外 观 Appearance	无损伤 No damage
			接触阻抗 Contact Resistance	20 mΩ MAX
4-3-3	耐湿性 Humidity  EIA 364-31 Method III Test Condition A	温度: 40±2° C Temperature : 40±2° C 相对湿度: 90~95% Relative Humidity : 90~95% 持续时间: 96 小时 Duration : 96hours	外 观 Appearance	无损伤 No damage
			接触阻抗 Contact Resistance	20 mΩ MAX
			耐电压 Dielectric Strength	见 4-1-3 Must meet 4-1-3
			绝缘阻抗 Insulation Resistance	1000MΩ MIN
4-3-4	高低温冲击 Temperature Shock  EIA 364-32 Test Condition I	-40° C~+105° C, 每 30 分钟转换一次, 循环 5 次.  5 cycles of: a) -40° C 30minutes b) +105° C 30minutes	外 观 Appearance	无损伤 No damage
			接触阻抗 Contact Resistance	20 mΩ MAX

TITLE:		PART NO.	CS-1200X-XXXX														
筒牛 2.54mm pitch 双排 90/180 DIP 型		DWG NO.	XXX-XXXXX														
A		李文畅	陈明斌	崔 敏	2020/05/05												
REV	MODIFICATION	WRITTEN	CHECKED	APPROVED	DATE												
THIS DOCUMENT CONTAINS INFORMATION THAT IS PROPRIETARY TO ShenZhenYongFengYing ELECTRONICS CO.,LTD				DOCUMENT	SHEET 4/6												
SHEET INDEX	REVISION SHEET	A	A	A	A	A	A	A									
		1	2	3	4	5	6										

贯彻制度 全员参与 持续改进 满足顾客

<b>CST</b> 深圳市永丰盈电子有限公司 ShenZhenYongFengYing ELEELECTRONICS CO.,LTD.	LANGUAGE
	CHINESE ENGLISH

项 目 Item		条 件 Condition	规 格 Standard	
4-3-5	盐雾测试 Salt Spray	温度 $35 \pm 2^\circ \text{C}$ ，浓度 $5 \pm 1\%$ ，时间 12 小时。 试验后先将连接器用水洗净，然后再将它放置 在下常室温内。  12hours exposure to a salt spray from the $5 \pm 1\%$ solution at $35 \pm 2^\circ \text{C}$ .	外 观 Appearance	无损伤 No damage
	EIA 364-26 Test Condition A		接触阻抗 Contact Resistance	$20 \text{ m}\Omega$ MAX
4-3-6	焊接性 Solder ability	焊接端 PIN 脚浸入溶化的焊料里(温度为 $245 \pm 5^\circ \text{C}$ ) 离基准面 1.6mm 处，浸 $5 \pm 0.5$ 秒。  Dip terminal and pin into the molten solder (held at $245 \pm 5^\circ \text{C}$ ) up to 1.6mm from the standard surface for $5 \pm 0.5$ seconds.	粘锡性 Solder Wetting	浸渍面积 90%以上 90% of immersed area must show no voids , pin holes
4-3-7	焊接耐热性 Resistance to Soldering Heat	焊接端 PIN 脚浸入溶化的焊料里(锡温为 $260 \pm 5^\circ \text{C}$ ) 产品塑料距融锡面 1.6mm，浸 $10 \pm 1$ 秒。  Dip terminal and pin into the molten solder (tin temperature at $260 \pm 5^\circ \text{C}$ ) up to 1.6mm from the melting tin surface for $10 \pm 1$ seconds.	外 观 Appearance	无损伤 No damage

**【5.外观形状、尺寸及材质 PRODUCT SHAPE, DIMENSIONS AND MATERIALS】**

参照图面 Refer to the drawing.

**【6.适合导体 APPLICABLE CONDUCTOR】**

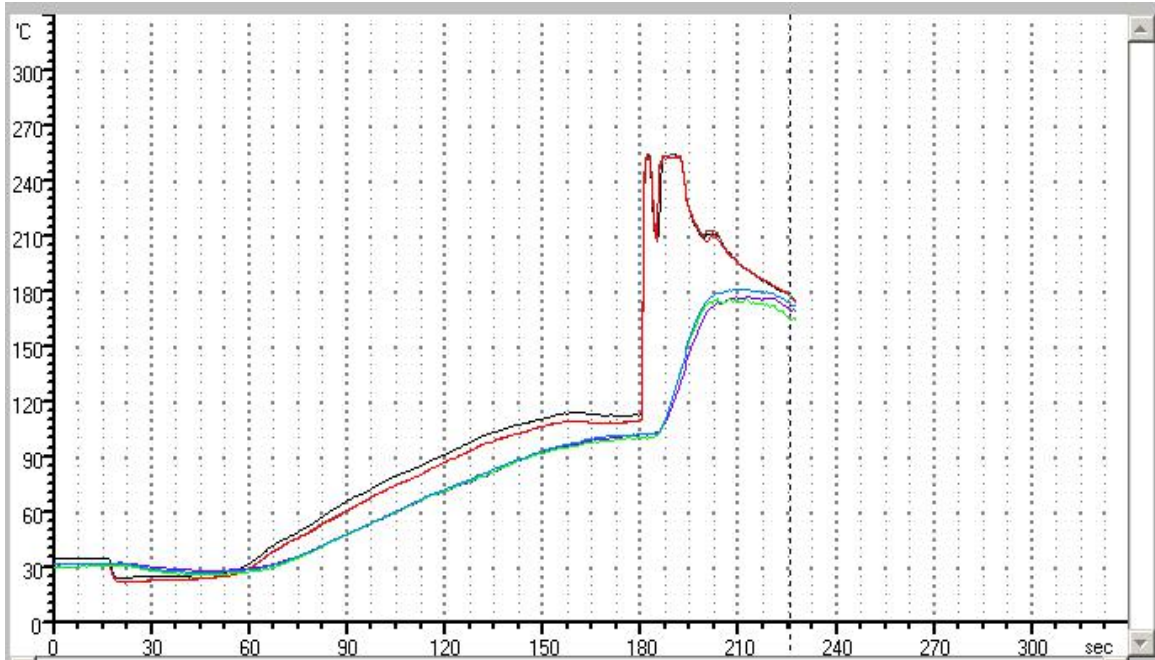
铜箔 镀锡或焊接

Copper foil, tin or solder plating.

TITLE:								PART NO.	CS-1200X-XXXX							
筒牛 2.54mm pitch 双排 90/180 DIP 型								DWG NO.	XXX-XXXXX							
A		李文畅			陈明斌			崔 敏			2020/05/05					
REV	MODIFICATION	WRITTEN	CHECKED	APPROVED	DATE											
THIS DOCUMENT CONTAINS INFORMATION THAT IS PROPRIETARY TO ShenZhenYongFengYing ELECTRONICS CO.,LTD								DOCUMENT	SHEET 5/6							
SHEET INDEX	REVISION SHEET	A	A	A	A	A	A									
		1	2	3	4	5	6									

贯彻制度 全员参与 持续改进 满足顾客

## 【7.波峰焊曲线图 REFLOW GRAPH】



1.预热 PCB 板底温度范围为：100-155℃. 预热 PCB 板面温度范围为：100-155℃.预热温度 50-155℃ 的时间：90-180 秒. 依据助焊剂性能条件设定.

2.焊接时锡点温度范围为： 双面板 250-260℃（单面板 240-255℃）. 依据焊锡熔化温度条件设定

3.PCB 浸锡时间为：4-7S.

4.PCB 板底\板面预热温度升温斜率 1-4℃/S.

TITLE:		PART NO.		CS-1200X-XXXX											
筒牛 2.54mm pitch 双排 90/180 DIP 型		DWG NO.		XXX-XXXXX											
A		李文畅	陈明斌	崔敏	2020/05/05										
REV	MODIFICATION	WRITTEN	CHECKED	APPROVED	DATE										
THIS DOCUMENT CONTAINS INFORMATION THAT IS PROPRIETARY TO ShenZhenYongFengYing ELECTRONICS CO.,LTD				DOCUMENT	SHEET 6/6										
SHEET INDEX	REVISION SHEET	A	A	A	A	A	A								
		1	2	3	4	5	6								

贯彻制度 全员参与 持续改进 满足顾客



SHENZHEN BAO SHIDA PLASTIC PRODUCTS CO.,LTD

NO.4-3,CHUANGYE 2ROAD JIANG BIAN INDUSTRY PARK,SONG GANG TOWN,BAOAN DISTRICT,SHENZHEN

The following sample(s) was/were submitted and identified on behalf of the clients as : PA6T

SGS Job No. : RP19-026263 - SZ

Date of Sample Received : 17 Dec 2019

Testing Period : 17 Dec 2019 - 24 Dec 2019

Test Requested : Selected test(s) as requested by client.

Test Method : Please refer to next page(s).

Test Results : Please refer to next page(s).

Conclusion : Based on the performed tests on submitted sample(s), the results of Lead, Mercury, Cadmium, Hexavalent chromium, Polybrominated biphenyls (PBBs), Polybrominated diphenyl ethers (PBDEs) and Phthalates such as Bis(2-ethylhexyl) phthalate (DEHP) , Butyl benzyl phthalate (BBP), Dibutyl phthalate (DBP) , and Diisobutyl phthalate (DIBP) comply with the limits as set by RoHS Directive (EU) 2015/863 amending Annex II to Directive 2011/65/EU.

Signed for and on behalf of  
SGS-CSTC Standards Technical Services Co., Ltd. Shenzhen Branch



Tina Fan  
Approved Signatory



Unless otherwise agreed in writing, this document is issued by the Company subject to its General Conditions of Service printed overleaf, available on request or accessible at <http://www.sgs.com/en/Terms-and-Conditions.aspx> and, for electronic format documents, subject to Terms and Conditions for Electronic Documents at <http://www.sgs.com/en/Terms-and-Conditions/Terms-e-Documents.aspx>. Attention is drawn to the limitation of liability, indemnification and jurisdiction issues defined therein. Any holder of this document is advised that information contained hereon reflects the Company's findings at the time of its intervention only and within the limits of Client's instructions, if any. The Company's sole responsibility is to its Client and this document does not exonerate parties to a transaction from exercising all their rights and obligations under the transaction documents. This document cannot be reproduced except in full, without prior written approval of the Company. Any unauthorized alteration, forgery or falsification of the content or appearance of this document is unlawful and offenders may be prosecuted to the fullest extent of the law. Unless otherwise stated the results shown in this test report refer only to the sample(s) tested.

Attention: To check the authenticity of testing /inspection report & certificate, please contact us at telephone: (86-755) 8307 1443, or email: CN.Doccheck@sgs.com



Test Results :

Test Part Description :

**Quantity:** SN1      **Order No.:** SZX19-027365.007      **Description:** Black plastic grains

Remarks :

- (1) 1 mg/kg = 1 ppm = 0.0001%
- (2) MDL = Method Detection Limit
- (3) ND = Not Detected ( < MDL )
- (4) "-" = Not Regulated



Test Method : With reference to IEC 62321-4:2013+AMD1:2017, IEC62321-5:2013, IEC62321-7-2:2017, IEC 62321-6:2015 and IEC62321-8:2017, analyzed by ICP-OES, UV-Vis and GC-MS.

Test Item(s)	Limit	Unit	MDL	007
Cadmium (Cd)	100	mg/kg	2	ND
Lead (Pb)	1,000	mg/kg	2	8
Mercury (Hg)	1,000	mg/kg	2	ND
Hexavalent Chromium (Cr(VI))	1,000	mg/kg	8	ND
Sum of PBBs	1,000	mg/kg	-	ND
Monobromobiphenyl	-	mg/kg	5	ND
Dibromobiphenyl	-	mg/kg	5	ND
Tribromobiphenyl	-	mg/kg	5	ND
Tetrabromobiphenyl	-	mg/kg	5	ND
Pentabromobiphenyl	-	mg/kg	5	ND
Hexabromobiphenyl	-	mg/kg	5	ND
Heptabromobiphenyl	-	mg/kg	5	ND
Octabromobiphenyl	-	mg/kg	5	ND
Nonabromobiphenyl	-	mg/kg	5	ND
Decabromobiphenyl	-	mg/kg	5	ND
Sum of PBDEs	1,000	mg/kg	-	ND
Monobromodiphenyl ether	-	mg/kg	5	ND
Dibromodiphenyl ether	-	mg/kg	5	ND
Tribromodiphenyl ether	-	mg/kg	5	ND
Tetrabromodiphenyl ether	-	mg/kg	5	ND
Pentabromodiphenyl ether	-	mg/kg	5	ND



Unless otherwise agreed in writing, this document is issued by the Company subject to its General Conditions of Service printed overleaf, available on request or accessible at <http://www.sgs.com/en/Terms-and-Conditions.aspx> and, for electronic format documents, subject to Terms and Conditions for Electronic Documents at <http://www.sgs.com/en/Terms-and-Conditions/Terms-e-Documents.aspx>. Attention is drawn to the limitation of liability, indemnification and jurisdiction issues defined therein. Any holder of this document is advised that information contained hereon reflects the Company's findings at the time of its intervention only and within the limits of Client's instructions, if any. The Company's sole responsibility is to its Client and this document does not exonerate parties to a transaction from exercising all their rights and obligations under the transaction documents. This document cannot be reproduced except in full, without prior written approval of the Company. Any unauthorized alteration, forgery or falsification of the content or appearance of this document is unlawful and offenders may be prosecuted to the fullest extent of the law. Unless otherwise stated the results shown in this test report refer only to the sample(s) tested.

Attention: To check the authenticity of testing / inspection report & certificate, please contact us at telephone: (86-755) 8307 1443, or email: [CN.Doccheck@sgs.com](mailto:CN.Doccheck@sgs.com)

SGS Bldg, No.4, Jianghao Industrial Park, No.430, Jihua Road, Bantian, Longgang District, Shenzhen, China 518129 t (86-755) 25328888 f (86-755) 83106190 www.sgs.com.cn  
 中国·深圳·龙岗区坂田吉华路430号江灏工业园4栋SGS大楼 邮编: 518129 t (86-755) 25328888 f (86-755) 83106190 e [sgs.china@sgs.com](mailto:sgs.china@sgs.com)

<u>Test Item(s)</u>	<u>Limit</u>	<u>Unit</u>	<u>MDL</u>	<u>007</u>
Hexabromodiphenyl ether	-	mg/kg	5	ND
Heptabromodiphenyl ether	-	mg/kg	5	ND
Octabromodiphenyl ether	-	mg/kg	5	ND
Nonabromodiphenyl ether	-	mg/kg	5	ND
Decabromodiphenyl ether	-	mg/kg	5	ND
Dibutyl Phthalate (DBP)	1000	mg/kg	50	ND
Butyl benzyl Phthalate (BBP)	1000	mg/kg	50	ND
Bis(2-ethylhexyl) Phthalate (DEHP)	1000	mg/kg	50	ND
Diisobutyl Phthalate (DIBP)	1000	mg/kg	50	ND

Notes :

(1)The maximum permissible limit is quoted from RoHS Directive (EU) 2015/863.

IEC 62321 series is equivalent to EN 62321 series

[https://www.cenelec.eu/dyn/www/f?p=104:30:1742232870351101:::FSP\\_ORG\\_ID,FSP\\_LANG\\_ID:1258637,25](https://www.cenelec.eu/dyn/www/f?p=104:30:1742232870351101:::FSP_ORG_ID,FSP_LANG_ID:1258637,25)

(2) The restriction of DEHP, BBP, DBP and DIBP shall apply to medical devices, including in vitro medical devices, and monitoring and control instruments, including industrial monitoring and control instruments, from 22 July 2021.

(3) The restriction of DEHP, BBP, DBP and DIBP shall not apply to toys which are already subject to the restriction of DEHP, BBP, DBP and DIBP through entry 51 of Annex XVII to Regulation (EC) No 1907/2006.



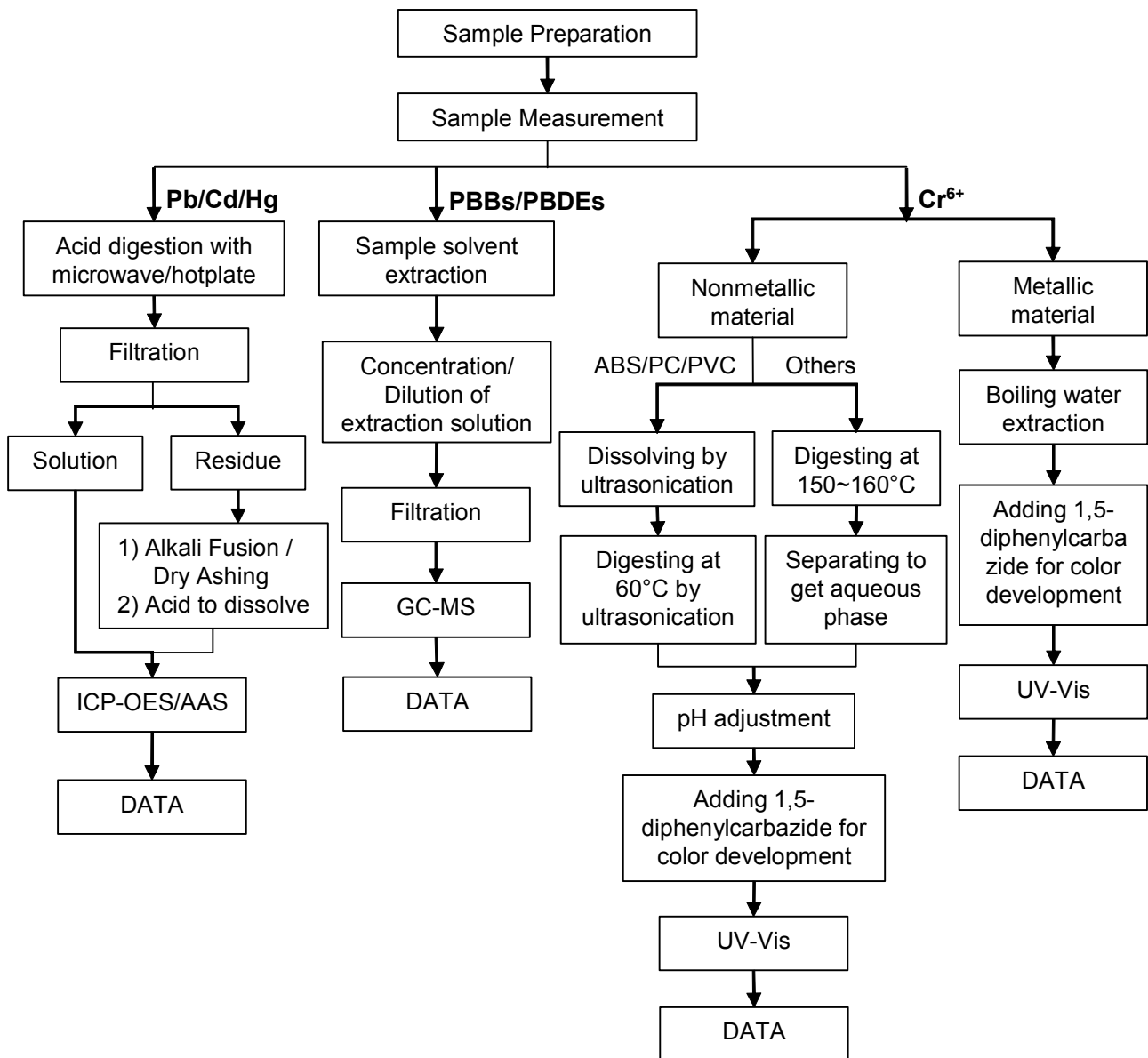
Unless otherwise agreed in writing, this document is issued by the Company subject to its General Conditions of Service printed overleaf, available on request or accessible at <http://www.sgs.com/en/Terms-and-Conditions.aspx> and, for electronic format documents, subject to Terms and Conditions for Electronic Documents at <http://www.sgs.com/en/Terms-and-Conditions/Terms-e-Documents.aspx>. Attention is drawn to the limitation of liability, indemnification and jurisdiction issues defined therein. Any holder of this document is advised that information contained hereon reflects the Company's findings at the time of its intervention only and within the limits of Client's instructions, if any. The Company's sole responsibility is to its Client and this document does not exonerate parties to a transaction from exercising all their rights and obligations under the transaction documents. This document cannot be reproduced except in full, without prior written approval of the Company. Any unauthorized alteration, forgery or falsification of the content or appearance of this document is unlawful and offenders may be prosecuted to the fullest extent of the law. Unless otherwise stated the results shown in this test report refer only to the sample(s) tested.

Attention: To check the authenticity of testing / inspection report & certificate, please contact us at telephone: (86-755) 8307 1443, or email: [CN.Doccheck@sgs.com](mailto:CN.Doccheck@sgs.com)  
 SGS Bldg, No.4, Jianghao Industrial Park, No.430, Jihua Road, Bantian, Longgang District, Shenzhen, China 518129 t (86-755) 25328888 f (86-755) 83106190 www.sgs.com.cn  
 中国·深圳·龙岗区坂田吉华路430号江灏工业园4栋SGS大楼 邮编: 518129 t (86-755) 25328888 f (86-755) 83106190 e [sgs.china@sgs.com](mailto:sgs.china@sgs.com)

## ATTACHMENTS

### Pb/Cd/Hg/Cr<sup>6+</sup>/PBBs/PBDEs Testing Flow Chart

1) These samples were dissolved totally by pre-conditioning method according to below flow chart. (Cr<sup>6+</sup> and PBBs/PBDEs test method excluded).

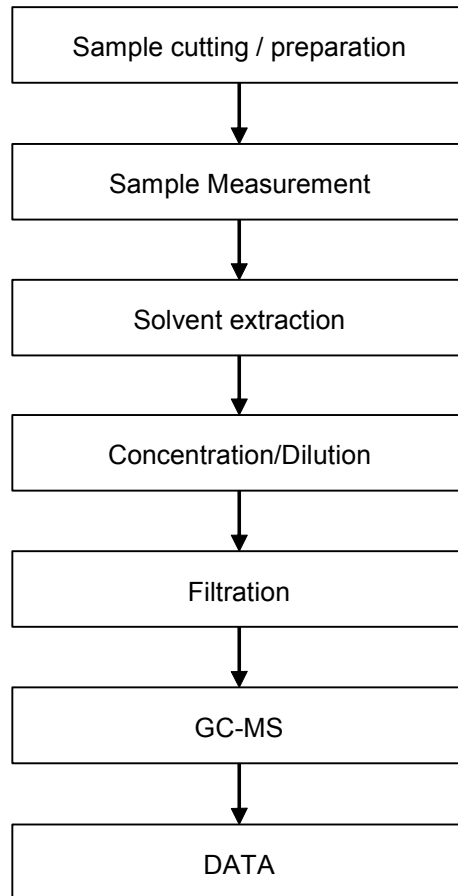


Unless otherwise agreed in writing, this document is issued by the Company subject to its General Conditions of Service printed overleaf, available on request or accessible at <http://www.sgs.com/en/Terms-and-Conditions.aspx> and, for electronic format documents, subject to Terms and Conditions for Electronic Documents at <http://www.sgs.com/en/Terms-and-Conditions/Terms-e-Documents.aspx>. Attention is drawn to the limitation of liability, indemnification and jurisdiction issues defined therein. Any holder of this document is advised that information contained hereon reflects the Company's findings at the time of its intervention only and within the limits of Client's instructions, if any. The Company's sole responsibility is to its Client and this document does not exonerate parties to a transaction from exercising all their rights and obligations under the transaction documents. This document cannot be reproduced except in full, without prior written approval of the Company. Any unauthorized alteration, forgery or falsification of the content or appearance of this document is unlawful and offenders may be prosecuted to the fullest extent of the law. Unless otherwise stated the results shown in this test report refer only to the sample(s) tested.

Attention: To check the authenticity of testing / inspection report & certificate, please contact us at telephone: (86-755) 8307 1443, or email: CN.Doccheck@sgs.com  
 SGS Bldg, No.4, Jianghao Industrial Park, No.430, Jihua Road, Bantian, Longgang District, Shenzhen, China 518129 t (86-755) 25328888 f (86-755) 83106190 www.sgs.com.cn  
 中国·深圳·龙岗区坂田吉华路430号江灏工业园4栋SGS大楼 邮编: 518129 t (86-755) 25328888 f (86-755) 83106190 e sgs.china@sgs.com

## ATTACHMENTS

### Phthalates Testing Flow Chart



Unless otherwise agreed in writing, this document is issued by the Company subject to its General Conditions of Service printed overleaf, available on request or accessible at <http://www.sgs.com/en/Terms-and-Conditions.aspx> and, for electronic format documents, subject to Terms and Conditions for Electronic Documents at <http://www.sgs.com/en/Terms-and-Conditions/Terms-e-Documents.aspx>. Attention is drawn to the limitation of liability, indemnification and jurisdiction issues defined therein. Any holder of this document is advised that information contained hereon reflects the Company's findings at the time of its intervention only and within the limits of Client's instructions, if any. The Company's sole responsibility is to its Client and this document does not exonerate parties to a transaction from exercising all their rights and obligations under the transaction documents. This document cannot be reproduced except in full, without prior written approval of the Company. Any unauthorized alteration, forgery or falsification of the content or appearance of this document is unlawful and offenders may be prosecuted to the fullest extent of the law. Unless otherwise stated the results shown in this test report refer only to the sample(s) tested.

**Attention: To check the authenticity of testing / inspection report & certificate, please contact us at telephone: (86-755) 8307 1443, or email: CN.Doccheck@sgs.com**

SGS Bldg, No.4, Jianghao Industrial Park, No.430, Jihua Road, Bantian, Longgang District, Shenzhen, China 518129 t (86-755) 25328888 f (86-755) 83106190 www.sgs.com.cn  
 中国·深圳·龙岗区坂田吉华路430号江灏工业园4栋SGS大楼 邮编: 518129 t (86-755) 25328888 f (86-755) 83106190 e sgs.china@sgs.com

Sample photo:



SGS authenticate the photo on original report only

\*\*\* End of Report \*\*\*



深圳市鸿华导针电子有限公司

深圳市光明新区公明上石家村金谷动力科技园12-11栋

以下测试之样品是由申请者所提供及确认: 黄铜

SGS工作编号: RP20-000609 - SZ

样品接收日期: 2020年01月09日

测试周期: 2020年01月09日 - 2020年01月14日

测试要求: 根据客户要求测试

测试方法: 请参见下一页

测试结果: 请参见下一页

结论: 基于所送样品进行的测试, 镉、铅、汞、六价铬、多溴联苯(PBBs)、多溴二苯醚(PBDEs)、邻苯二甲酸酯(如邻苯二甲酸二丁酯(DBP)、邻苯二甲酸丁苄酯(BBP)、邻苯二甲酸二(2-乙基己基)酯(DEHP)和邻苯二甲酸二异丁酯(DIBP))的测试结果符合欧盟RoHS指令2011/65/EU附录II的修正指令(EU) 2015/863的限值要求。

通标标准技术服务有限公司深圳分公司  
授权签名Tina Fan 范萍  
批准签署人

Unless otherwise agreed in writing, this document is issued by the Company subject to its General Conditions of Service printed overleaf, available on request or accessible at <http://www.sgs.com/en/Terms-and-Conditions.aspx> and, for electronic format documents, subject to Terms and Conditions for Electronic Documents at <http://www.sgs.com/en/Terms-and-Conditions/Terms-e-Documents.aspx>. Attention is drawn to the limitation of liability, indemnification and jurisdiction issues defined therein. Any holder of this document is advised that information contained hereon reflects the Company's findings at the time of its intervention only and within the limits of Client's instructions, if any. The Company's sole responsibility is to its Client and this document does not exonerate parties to a transaction from exercising all their rights and obligations under the transaction documents. This document cannot be reproduced except in full, without prior written approval of the Company. Any unauthorized alteration, forgery or falsification of the content or appearance of this document is unlawful and offenders may be prosecuted to the fullest extent of the law. Unless otherwise stated the results shown in this test report refer only to the sample(s) tested.

Attention: To check the authenticity of testing / inspection report & certificate, please contact us at telephone: (86-755) 8307 1443, or email: CN.Doccheck@sgs.com

测试结果:

测试样品描述:

SN1

SZX20-000739.001

黄铜色金属线

备注:

- (1) 1 mg/kg = 1 ppm = 0.0001%
- (2) MDL = 方法检测限
- (3) ND = 未检出 (< MDL)
- (4) "-" = 未规定

测试方法: 参考IEC 62321-4:2013+AMD1:2017, IEC 62321-5:2013, IEC 62321-7-1:2015, IEC 62321-6:2015和IEC 62321-8:2017, 采用ICP-OES,UV-Vis和GC-MS进行分析.

测试项目	限值	单位	MDL	001
镉 (Cd)	100	mg/kg	2	ND
铅 (Pb)	1,000	mg/kg	2	19
汞 (Hg)	1,000	mg/kg	2	ND
六价铬(Cr(VI))▼	-	µg/cm <sup>2</sup>	0.10	ND
多溴联苯之和(PBBs)	1,000	mg/kg	-	ND
一溴联苯	-	mg/kg	5	ND
二溴联苯	-	mg/kg	5	ND
三溴联苯	-	mg/kg	5	ND
四溴联苯	-	mg/kg	5	ND
五溴联苯	-	mg/kg	5	ND
六溴联苯	-	mg/kg	5	ND
七溴联苯	-	mg/kg	5	ND
八溴联苯	-	mg/kg	5	ND
九溴联苯	-	mg/kg	5	ND
十溴联苯	-	mg/kg	5	ND
多溴二苯醚之和(PBDEs)	1,000	mg/kg	-	ND
一溴二苯醚	-	mg/kg	5	ND
二溴二苯醚	-	mg/kg	5	ND
三溴二苯醚	-	mg/kg	5	ND
四溴二苯醚	-	mg/kg	5	ND
五溴二苯醚	-	mg/kg	5	ND



Unless otherwise agreed in writing, this document is issued by the Company subject to its General Conditions of Service printed overleaf, available on request or accessible at <http://www.sgs.com/en/Terms-and-Conditions.aspx> and, for electronic format documents, subject to Terms and Conditions for Electronic Documents at <http://www.sgs.com/en/Terms-and-Conditions/Terms-e-Documents.aspx>. Attention is drawn to the limitation of liability, indemnification and jurisdiction issues defined therein. Any holder of this document is advised that information contained hereon reflects the Company's findings at the time of its intervention only and within the limits of Client's instructions, if any. The Company's sole responsibility is to its Client and this document does not exonerate parties to a transaction from exercising all their rights and obligations under the transaction documents. This document cannot be reproduced except in full, without prior written approval of the Company. Any unauthorized alteration, forgery or falsification of the content or appearance of this document is unlawful and offenders may be prosecuted to the fullest extent of the law. Unless otherwise stated the results shown in this test report refer only to the sample(s) tested.

Attention: To check the authenticity of testing / inspection report & certificate, please contact us at telephone: (86-755) 8307 1443, or email: CN.Doccheck@sgs.com

SGS Bldg, No.4, Jianghao Industrial Park, No.430, Jihua Road, Bantian, Longgang District, Shenzhen, China 518129 t (86-755) 25328888 f (86-755) 83106190 www.sgs.com.cn  
 中国·深圳·龙岗区坂田吉华路430号江灏工业园4栋SGS大楼 邮编: 518129 t (86-755) 25328888 f (86-755) 83106190 e sgs.china@sgs.com





测试项目	限值	单位	MDL	001
六溴二苯醚	-	mg/kg	5	ND
七溴二苯醚	-	mg/kg	5	ND
八溴二苯醚	-	mg/kg	5	ND
九溴二苯醚	-	mg/kg	5	ND
十溴二苯醚	-	mg/kg	5	ND
邻苯二甲酸二丁酯 (DBP)	1000	mg/kg	50	ND
邻苯二甲酸丁苄酯 (BBP)	1000	mg/kg	50	ND
邻苯二甲酸二(2-乙基己基)酯 (DEHP)	1000	mg/kg	50	ND
邻苯二甲酸二异丁酯 (DIBP)	1000	mg/kg	50	ND

备注:

(1) 最大允许极限值引用自RoHS指令(EU) 2015/863。

IEC 62321系列等同于 EN 62321 系列

[https://www.cenelec.eu/dyn/www/f?p=104:30:1742232870351101:::FSP\\_ORG\\_ID,FSP\\_LANG\\_ID:1258637,25](https://www.cenelec.eu/dyn/www/f?p=104:30:1742232870351101:::FSP_ORG_ID,FSP_LANG_ID:1258637,25)

(2) ▼= a. 当六价格的浓度高于0.13 µg/cm<sup>2</sup>时, 样品为阳性, 即含有六价格;

b. 当六价格的浓度为ND(低于0.10 µg/cm<sup>2</sup>)时, 样品为阴性, 即未检测到六价格;

c. 当六价格的浓度介于0.10 µg/cm<sup>2</sup>与0.13 µg/cm<sup>2</sup>之间时, 无法直接判定是否检测到六价格, 因不同个体的样品表面差异可能会影响测定结果;

由于未获知样品的存储条件和生产日期, 样品的六价格测试结果仅能代表测试时样品含六价格的状态。

除非另有说明, 此报告结果仅对测试的样品负责。本报告未经本公司书面许可, 不可部分复制。

检测报告仅用于客户科研、教学、内部质量控制、产品研发等目的, 仅供内部参考。



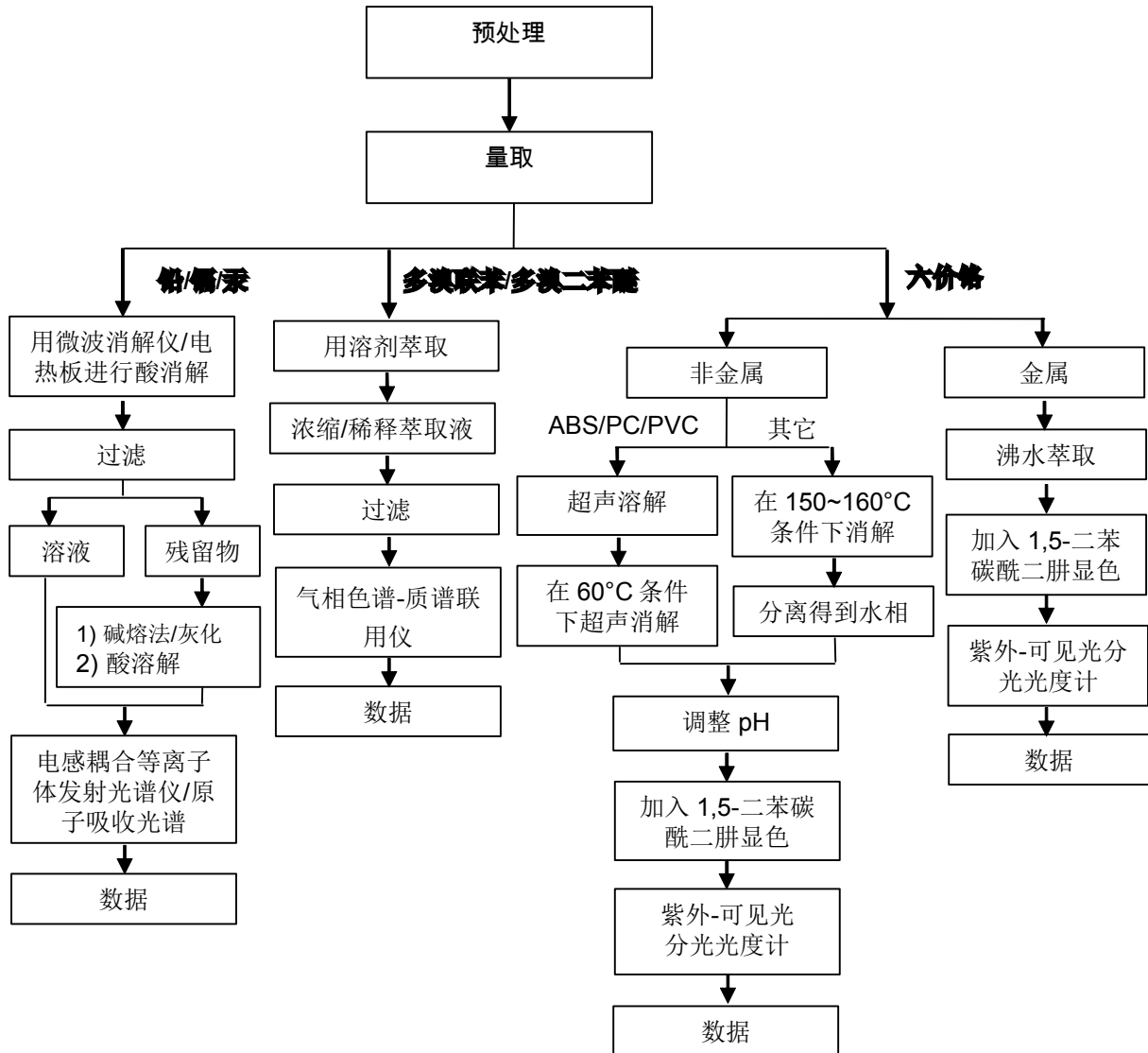
Unless otherwise agreed in writing, this document is issued by the Company subject to its General Conditions of Service printed overleaf, available on request or accessible at <http://www.sgs.com/en/Terms-and-Conditions.aspx> and, for electronic format documents, subject to Terms and Conditions for Electronic Documents at <http://www.sgs.com/en/Terms-and-Conditions/Terms-e-Documents.aspx>. Attention is drawn to the limitation of liability, indemnification and jurisdiction issues defined therein. Any holder of this document is advised that information contained hereon reflects the Company's findings at the time of its intervention only and within the limits of Client's instructions, if any. The Company's sole responsibility is to its Client and this document does not exonerate parties to a transaction from exercising all their rights and obligations under the transaction documents. This document cannot be reproduced except in full, without prior written approval of the Company. Any unauthorized alteration, forgery or falsification of the content or appearance of this document is unlawful and offenders may be prosecuted to the fullest extent of the law. Unless otherwise stated the results shown in this test report refer only to the sample(s) tested.

Attention: To check the authenticity of testing / inspection report & certificate, please contact us at telephone: (86-755) 8307 1443, or email: [CN.Doccheck@sgs.com](mailto:CN.Doccheck@sgs.com)  
 SGS Bldg, No.4, Jianghao Industrial Park, No.430, Jihua Road, Bantian, Longgang District, Shenzhen, China 518129 t (86-755) 25328888 f (86-755) 83106190 www.sgsgroup.com.cn  
 中国·深圳·龙岗区坂田吉华路430号江灏工业园4栋SGS大楼 邮编: 518129 t (86-755) 25328888 f (86-755) 83106190 e [sgs.china@sgs.com](mailto:sgs.china@sgs.com)

## 附件

### Pb/Cd/Hg/Cr<sup>6+</sup>/PBBs/PBDEs 测试流程图

1) 样品按照下述流程被完全消解（六价铬和多溴联苯/多溴二苯醚测试除外）。



Unless otherwise agreed in writing, this document is issued by the Company subject to its General Conditions of Service printed overleaf, available on request or accessible at <http://www.sgs.com/en/Terms-and-Conditions.aspx> and, for electronic format documents, subject to Terms and Conditions for Electronic Documents at <http://www.sgs.com/en/Terms-and-Conditions/Terms-e-Documents.aspx>. Attention is drawn to the limitation of liability, indemnification and jurisdiction issues defined therein. Any holder of this document is advised that information contained hereon reflects the Company's findings at the time of its intervention only and within the limits of Client's instructions, if any. The Company's sole responsibility is to its Client and this document does not exonerate parties to a transaction from exercising all their rights and obligations under the transaction documents. This document cannot be reproduced except in full, without prior written approval of the Company. Any unauthorized alteration, forgery or falsification of the content or appearance of this document is unlawful and offenders may be prosecuted to the fullest extent of the law. Unless otherwise stated the results shown in this test report refer only to the sample(s) tested.

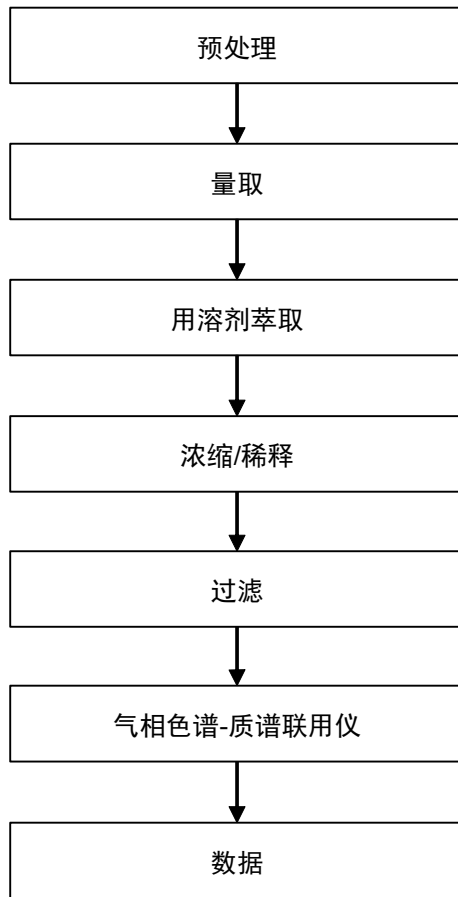
Attention: To check the authenticity of testing / inspection report & certificate, please contact us at telephone: (86-755) 8307 1443, or email: CN.Doccheck@sgs.com

SGS Bldg, No.4, Jianghao Industrial Park, No.430, Jihua Road, Banlian, Longgang District, Shenzhen, China 518129 t (86-755) 25328888 f (86-755) 83106190 www.sgs.com.cn  
 中国·深圳·龙岗区坂田吉华路430号江灏工业园4栋SGS大楼 邮编: 518129 t (86-755) 25328888 f (86-755) 83106190 e sgs.china@sgs.com



附件

## Phthalates 测试流程图



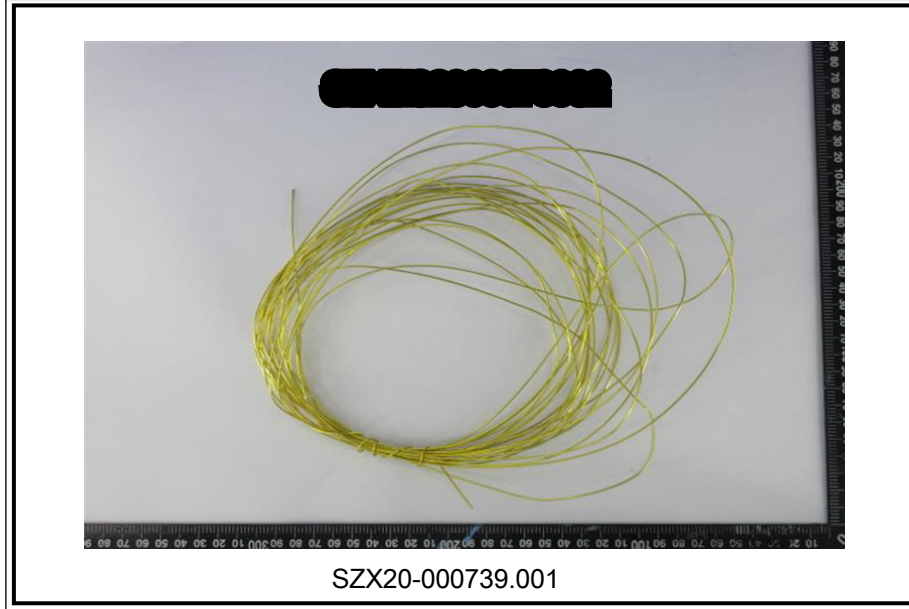
Unless otherwise agreed in writing, this document is issued by the Company subject to its General Conditions of Service printed overleaf, available on request or accessible at <http://www.sgs.com/en/Terms-and-Conditions.aspx> and, for electronic format documents, subject to Terms and Conditions for Electronic Documents at <http://www.sgs.com/en/Terms-and-Conditions/Terms-e-Documents.aspx>. Attention is drawn to the limitation of liability, indemnification and jurisdiction issues defined therein. Any holder of this document is advised that information contained hereon reflects the Company's findings at the time of its intervention only and within the limits of Client's instructions, if any. The Company's sole responsibility is to its Client and this document does not exonerate parties to a transaction from exercising all their rights and obligations under the transaction documents. This document cannot be reproduced except in full, without prior written approval of the Company. Any unauthorized alteration, forgery or falsification of the content or appearance of this document is unlawful and offenders may be prosecuted to the fullest extent of the law. Unless otherwise stated the results shown in this test report refer only to the sample(s) tested.

Attention: To check the authenticity of testing / inspection report & certificate, please contact us at telephone: (86-755) 8307 1443, or email: [CN.Doccheck@sgs.com](mailto:CN.Doccheck@sgs.com)

SGS Bldg, No.4, Jianghao Industrial Park, No.430, Jihua Road, Bantian, Longgang District, Shenzhen, China 518129 t (86-755) 25328888 f (86-755) 83106190 www.sgs.com.cn  
中国·深圳·龙岗区坂田吉华路430号江灏工业园4栋SGS大楼 邮编: 518129 t (86-755) 25328888 f (86-755) 83106190 e [sgs.china@sgs.com](mailto:sgs.china@sgs.com)



样品照片:



此照片仅限于随SGS正本报告使用

\*\*\* 报告完 \*\*\*



Unless otherwise agreed in writing, this document is issued by the Company subject to its General Conditions of Service printed overleaf, available on request or accessible at <http://www.sgs.com/en/Terms-and-Conditions.aspx> and, for electronic format documents, subject to Terms and Conditions for Electronic Documents at <http://www.sgs.com/en/Terms-and-Conditions/Terms-e-Documents.aspx>. Attention is drawn to the limitation of liability, indemnification and jurisdiction issues defined therein. Any holder of this document is advised that information contained hereon reflects the Company's findings at the time of its intervention only and within the limits of Client's instructions, if any. The Company's sole responsibility is to its Client and this document does not exonerate parties to a transaction from exercising all their rights and obligations under the transaction documents. This document cannot be reproduced except in full, without prior written approval of the Company. Any unauthorized alteration, forgery or falsification of the content or appearance of this document is unlawful and offenders may be prosecuted to the fullest extent of the law. Unless otherwise stated the results shown in this test report refer only to the sample(s) tested.

Attention: To check the authenticity of testing / inspection report & certificate, please contact us at telephone: (86-755) 8307 1443, or email: [CN.Doccheck@sgs.com](mailto:CN.Doccheck@sgs.com)

SGS Bldg, No.4, Jianghao Industrial Park, No.430, Jihua Road, Bantian, Longgang District, Shenzhen, China 518129 t (86-755) 25328888 f (86-755) 83106190 www.sgs.com.cn  
中国·深圳·龙岗区坂田吉华路430号江灏工业园4栋SGS大楼 邮编: 518129 t (86-755) 25328888 f (86-755) 83106190 e [sgs.china@sgs.com](mailto:sgs.china@sgs.com)

SHENZHEN YONG FENG YING ELECTRONIC CO.,LTD

ZYC (SHENZHEN) TECHNOLOGY ;LIMITED

No.2, DONGLIAN INDUSTRIAL ZONE, JINSHA COMMUNITY, KENGZI STREET, PINGSHAN DISTRICT, SHENZHEN

The following sample(s) was/were submitted and identified on behalf of the clients as : Environmental tinned copper needles

SGS Job No. : CP19-057833 - GZ  
Model No. : 0.5\*0.5 mm  
Client Ref. Info. : SEE REMARK  
Supplier : HONGHUA D UO XIN  
Date of Sample Received : 28 Oct 2019  
Testing Period : 28 Oct 2019 - 01 Nov 2019  
Test Requested : Selected test(s) as requested by client.  
Test Method : Please refer to next page(s).  
Test Results : Please refer to next page(s).  
Conclusion : Based on the performed tests on submitted sample(s), the results of Lead, Mercury, Cadmium, Hexavalent chromium comply with the limits as set by RoHS Directive (EU) 2015/863 amending Annex II to Directive 2011/65/EU.

Signed for and on behalf of  
SGS-CSTC Standards Technical Services Co., Ltd. Guangzhou Branch

Jessie Li

Jessie Li  
Approved Signatory



**Test Report**

No. CANEC1921131105

Date: 04 Nov 2019

Page 2 of 5

Test Results :

Test Part Description :

**Quantity** : **Accessories** **Material**  
 SN1                      CAN19-211311.005                      Silvery metal

Remarks :

- (1) 1 mg/kg = 1 ppm = 0.0001%
- (2) MDL = Method Detection Limit
- (3) ND = Not Detected ( < MDL )
- (4) "-" = Not Regulated

Test Method : With reference to IEC 62321-4:2013+A1:2017, IEC 62321-5:2013, IEC 62321-7-1:2015, analyzed by ICP-OES and UV-Vis .

Test Item(s)	Limit	Unit	MDL	005
Cadmium (Cd)	100	mg/kg	2	ND
Lead (Pb)	1,000	mg/kg	2	19
Mercury (Hg)	1,000	mg/kg	2	ND
Hexavalent Chromium (Cr(VI))▼	-	µg/cm <sup>2</sup>	0.10	ND

Notes :

- (1) The maximum permissible limit is quoted from RoHS Directive (EU) 2015/863. IEC 62321 series is equivalent to EN 62321 series  
[https://www.cenelec.eu/dyn/www/f?p=104:30:1742232870351101:::FSP\\_ORG\\_ID,FSP\\_LANG\\_ID:1258637,25](https://www.cenelec.eu/dyn/www/f?p=104:30:1742232870351101:::FSP_ORG_ID,FSP_LANG_ID:1258637,25)
- (2) ▼= a. The sample is positive for CrVI if the CrVI concentration is greater than 0.13 µg/cm<sup>2</sup>. The sample coating is considered to contain CrVI  
 b. The sample is negative for CrVI if CrVI is ND (concentration less than 0.10 µg/cm<sup>2</sup>). The coating is considered a non-CrVI based coating  
 c. The result between 0.10 µg/cm<sup>2</sup> and 0.13 µg/cm<sup>2</sup> is considered to be inconclusive - unavoidable coating variations may influence the determination  
 Information on storage conditions and production date of the tested sample is unavailable and thus Cr(VI) results represent status of the sample at the time of testing.



Unless otherwise agreed in writing, this document is issued by the Company subject to its General Conditions of Service printed overleaf, available on request or accessible at <http://www.sgs.com/en/Terms-and-Conditions.aspx> and, for electronic format documents, subject to Terms and Conditions for Electronic Documents at <http://www.sgs.com/en/Terms-and-Conditions/Terms-e-Documents.aspx>. Attention is drawn to the limitation of liability, indemnification and jurisdiction issues defined therein. Any holder of this document is advised that information contained hereon reflects the Company's findings at the time of its intervention only and within the limits of Client's instructions, if any. The Company's sole responsibility is to its Client and this document does not exonerate parties to a transaction from exercising all their rights and obligations under the transaction documents. This document cannot be reproduced except in full, without prior written approval of the Company. Any unauthorized alteration, forgery or falsification of the content or appearance of this document is unlawful and offenders may be prosecuted to the fullest extent of the law. Unless otherwise stated the results shown in this test report refer only to the sample(s) tested.

Attention: To check the authenticity of testing /inspection report & certificate, please contact us at telephone: (86-755) 8307 1443, or email: CN\_Doccheck@sgs.com

## REMARK:

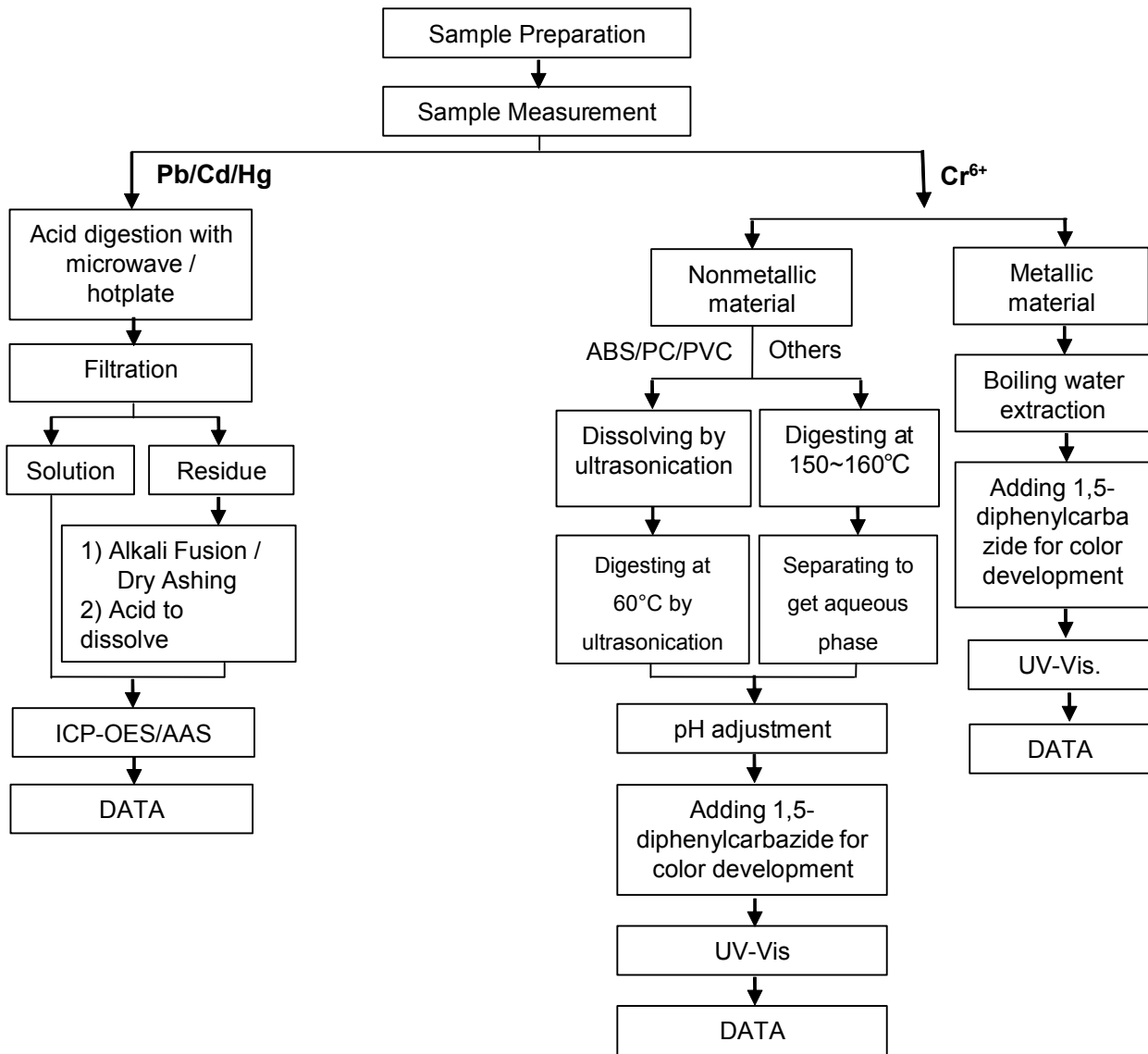
1001, 1002, 1125, 1125R, 1253, 1253R, 1254, 1254D, 1256, 1235, 1147, 1147A, 1147R, 1147H, 1147V, 1259S, 1174, 1174R, 1126WS, 1126WR, 1127WS, 1127WR, 9001, 9001R, 1125, 1125R, 1261, 1261R, 2006, 1001, 1001R, 1116-XXW, 1116-04WR, 1129, 1129R, 1131, 1132, 1133R, 1133H, 1133H-02B, 1135, 1135R, 1141, 1109, 1110, 1106, 1107, 1143, 1143R, 6001, 7001, 7001-XX(L), 6254, 6255, 2012, 12121, 1120, 1120R, 1127, 1277, 1139, 1139-XXWO/P, 4001, 4001R, 4002, 4003, 4003R, 2010, 20101, 1103, 1103-XX(B), 5081, 5081R, 1114-04WS, 1114-04WR, 1114-04HL, 1114P-04WS, 1154, 1150, 1150S, 1151S, 1152S, 1153S, 1174R, 1174V, 1174H, 2006R, 2008, 2008R, 1141R, 1169, 6002, 7002, 7254, 5005A-XXR, 5006A-XXDR, 5017A-XXS, 5017-XXR, 5018A-XXDR, 1122, 1122-XXB, 1151, 1153, 5012, 5012B, 5012R, 5012BR, 1147A, 1022, 25401, 7920, 1111, 1150, 1150R, 1150KB, 1150KD, 1150KZ, 10033, 1157, 2234, 2235, (0.3\*0.3, 0.46\*0.46, 0.5\*0.5, 0.64\*0.64, 0.7\*0.7, 1.14\*1.14), Pin Header, Female Header, CS-0721-6-PP9, 3001, 3002, 3003, 3003R, 3004, CST-4GD219-X06D(H5.8), CS-DSUB-09BF(2), PINHEADER, FEMALE HEADER, 1277, 37001, 50301, 6700, 2002, 2003, 6200, 4140, SMW-200/220/221 CHANPIN



## ATTACHMENTS

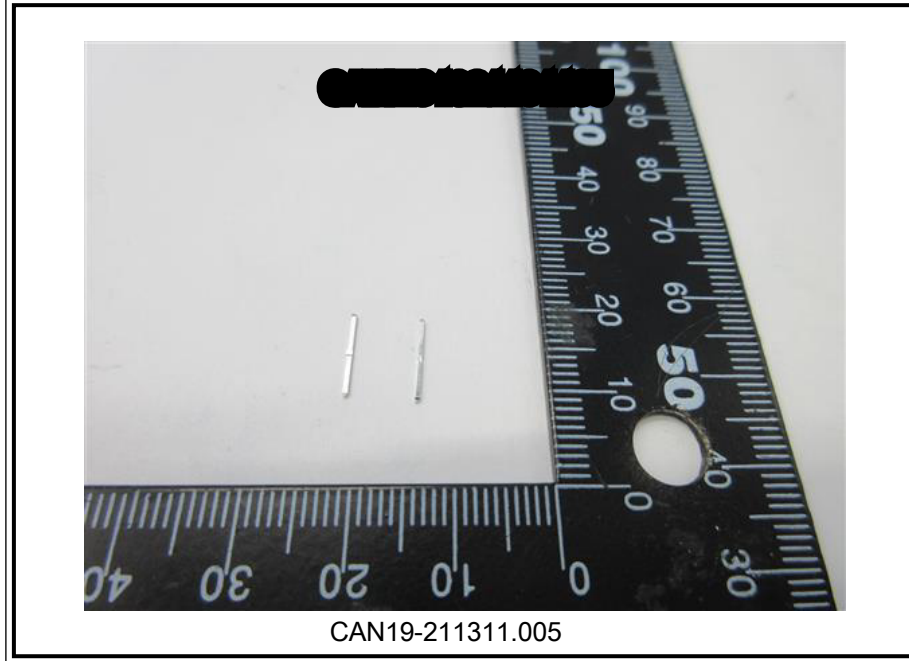
### Pb/Cd/Hg/Cr<sup>6+</sup> Testing Flow Chart

1) These samples were dissolved totally by pre-conditioning method according to below flow chart.  
(Cr<sup>6+</sup> test method excluded).





Sample photo:



SGS authenticate the photo on original report only

\*\*\* End of Report \*\*\*



## X-ON Electronics

Largest Supplier of Electrical and Electronic Components

*Click to view similar products for [I/O Connectors](#) category:*

*Click to view products by [Yongfengying Electronics](#) manufacturer:*

Other Similar products are found below :

[571763P](#) [59811-0000](#) [61-168618-12P](#) [D20419-211](#) [D38999/20FJ24PA L/C](#) [76871-1403](#) [PCR-E36PM](#) [PCS-XE26LKA](#) [PCS-XES68MS+](#)  
[G38A71314B](#) [DX40-50P\(55\)](#) [1571250010](#) [157-22500-3](#) [MS3471L14-19P L/C](#) [192991-0703](#) [FCN-260C008-A/L0](#) [FCN-260C024-AL0](#) [FCN-](#)  
[261Z008](#) [2000314-1](#) [200331-1](#) [PCS-E28FS+](#) [PCS-XE26SLFD+](#) [PCS-XE26SLFDT+](#) [G730VID08BDC24](#) [HDR-E14MSG1+](#) [54182-0605](#)  
[UE86K842720321](#) [38113800006](#) [DP3AR020WQ1R200](#) [DRA-26PC-F0R](#) [Z4.102.0680.0](#) [500-1040](#) [500-1052](#) [DX40-20P\(55\)](#) [5554841-1](#)  
[SM3100F14S-12P](#) [U90B3054061110](#) [U65-E04-4020](#) [557-262M2-06C](#) [60-042222-02S](#) [10099439-003C-TRLF](#) [226-0348-000](#) [10137239-](#)  
[0011LF](#) [70.060.1028.0](#) [109029-ZZ](#) [HDR-E26MG1+](#) [SO-0715-02-01-02](#) [GT1-DA04CST](#) [231-303](#) [MS3112E16-8SX](#)