

78M09

FEATURES:

Maximum Output current ICM: 0.5A

Output voltage VO: 9V

Continuous total dissipation

PD: 1.25 W(Ta=25°C)

TO-252-2L

1.IN

2.GND

3.OUT



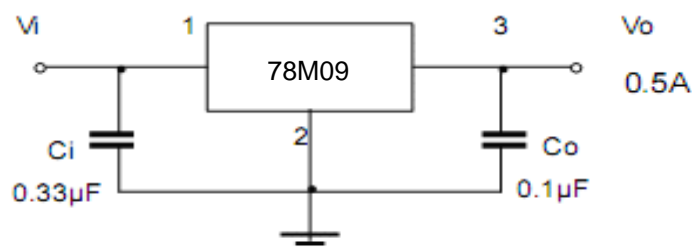
ABSOLUTE MAXIMUM RATINGS(Operating temperature unless otherwise specified)

Symbol (符号)	Parameter (参数名称)	Value (额定值)	Units (单位)
Vi	Input Voltage	35	V
TOPR	Operating junction Temperature Range	0~+125	°C
TstG	Storage Temperature Range	-55~+150	°C

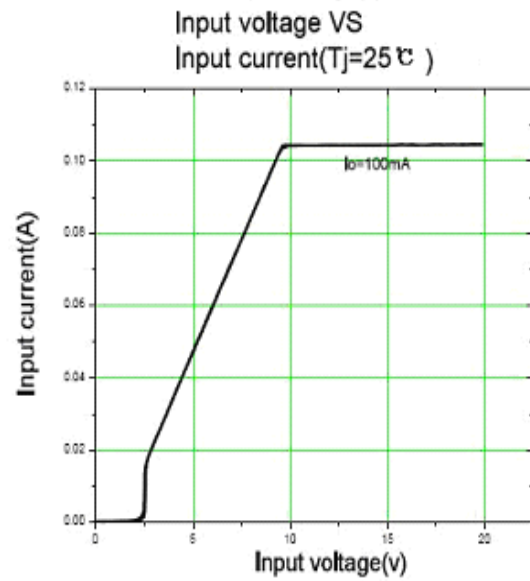
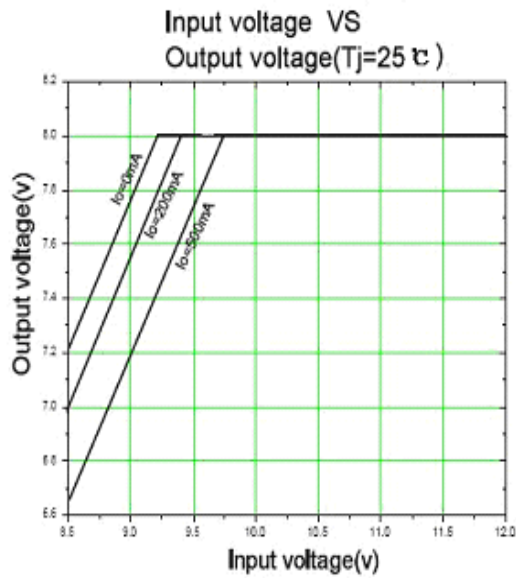
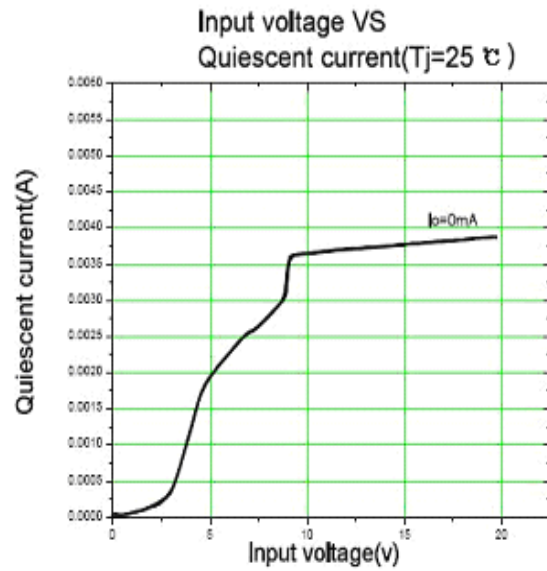
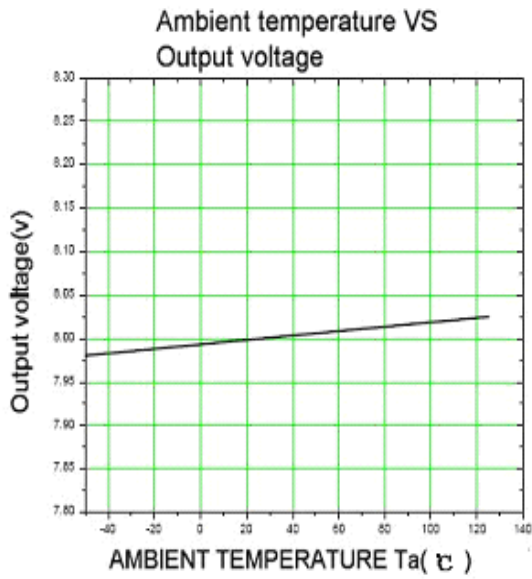
ELECTRICAL CHARACTERISTICS (Tamb=25°C unless otherwise specified)

Parameter	Symbol	Test conditions	MIN	TYP	MAX	UNIT
Output voltage	Vo	25°C	8.65	9	9.35	V
		11.5V ≤ Vi ≤ 24V, Io = 5mA ~ 350mA Po ≤ 15W 0-125°C	8.55	9	9.45	V
Load Regulation	ΔVo	Io = 1mA ~ 500mA 25°C		20	180	mV
		Io = 5mA ~ 200mA 25°C		10	90	mV
Line regulation	ΔVo	11.5V ≤ Vi ≤ 26V Io = 200mA		6	100	mV
		12V ≤ Vi ≤ 26V Io = 200mA 25°C		2	50	mV
Quiescent Current	Iq	25°C		4.6	6	mA
Quiescent Current Change	ΔIq	11.5V ≤ Vi ≤ 26V Io = 200mA 0-125°C			0.8	mA
	ΔIq	5mA ≤ Io ≤ 350mA 0-125°C			0.5	mA
Output Noise Voltage	VN	10Hz ≤ f ≤ 100KHz 25°C		60		uV
Ripple Rejection	RR	13V ≤ Vi ≤ 23V, f = 120Hz Io = 300mA 0-125°C	56	80		dB
Dropout Voltage	Vd	Io = 350mA 25°C		2		V

TYPICAL APPLICATION



Typical Characteristics



X-ON Electronics

Largest Supplier of Electrical and Electronic Components

Click to view similar products for [Linear Voltage Regulators](#) category:

Click to view products by [Yongyutai Electronics](#) manufacturer:

Other Similar products are found below :

[LV56831P-E](#) [LV5684PVD-XH](#) [MCDTSA6-2R](#) [L7815ACV-DG](#) [PQ3DZ53U](#) [LV56801P-E](#) [TLE42794G](#) [L78L05CZ/1SX](#) [L78LR05DL-MA-E](#) [636416C](#) [714954EB](#) [ZMR500QFTA](#) [LV5680P-E](#) [L78M15CV-DG](#) [L79M05T-E](#) [TLS202A1MBVHTSA1](#) [L78LR05D-MA-E](#) [NCV317MBTG](#) [NTE7227](#) [MP2018GZD-33-P](#) [MP2018GZD-5-P](#) [LV5680NPVC-XH](#) [LT1054CN8](#) [MP2018GZD-5-Z](#) [MP2018GZD-33-Z](#) [AT55EL50ESE](#) [APL5934DKAI-TRG](#) [78L05U](#) [78L05](#) [CL9193A15L5M](#) [CL9036A30F4M](#) [CL9036A18F4M](#) [CL9036A25F4M](#) [CL9036A28F4M](#) [CL9036A33F4M](#) [CL9906A18F4N](#) [CL9906A30F4N](#) [CL9908A30F4M](#) [CL9908A33F4M](#) [CL9908A18F4M](#) [CL9908A28F4M](#) [TL431ACM/TR](#) [TL431AIM/TR](#) [LM78L05ACM/TR](#) [HT7812ARMZ](#) [HT7805ARMZ](#) [HT317LRHZ](#) [HXY6206I-3.0](#) [HXY6206I-3.3](#) [XC6206P252MR](#) [XC6206P282MR](#)