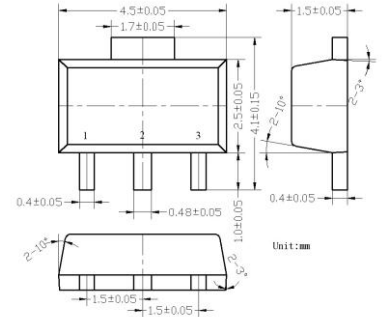


Three-terminal negative regulator

Features:

- Maximum output current
 $I_{OM}: 0.1A$
- Output voltage
 $V_O: -5V$
- Continuous total dissipation
 $P_D: 0.5W$



ABSOLUTE MAXIMUM RATINGS(operating temperature range applies unless otherwise noted)

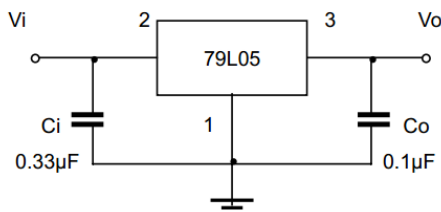
Parameter	Symb	Value	Unit
Input voltage	V_I	-30	V
Operating Junction Temperature	T_{OPR}	0~+150	°C
Storage Temperature Range	T_{STG}	-55~+150	°C

1. GND
2. IN
3. OUT

ELECTRICAL CHARACTERISTICS AT SPECIFIED VIRTUAL JUNCTION TEMPERATURE($V_I=-10V, I_o=40mA, C_i=0.33 \mu F, C_o=0.1 \mu F$, unless otherwise specified)

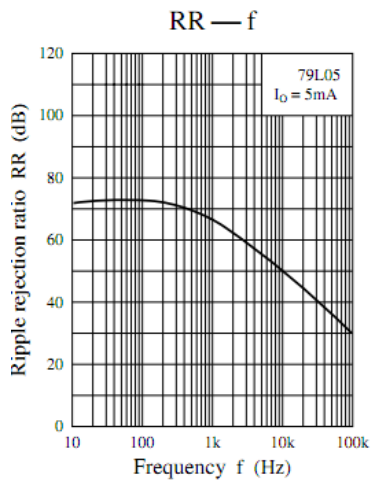
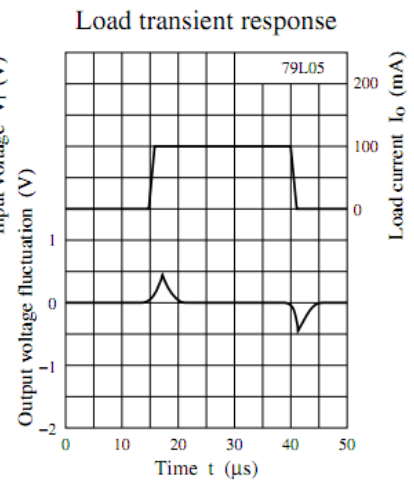
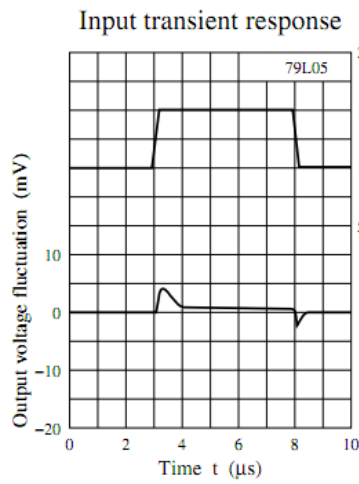
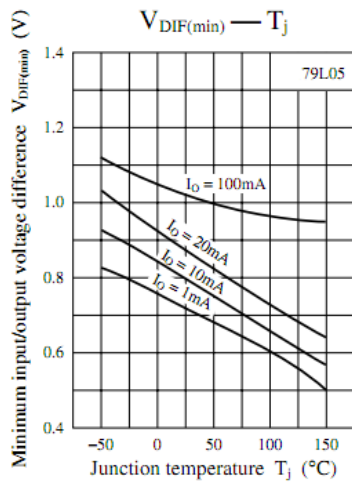
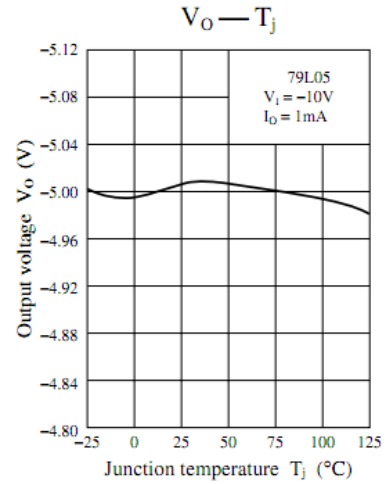
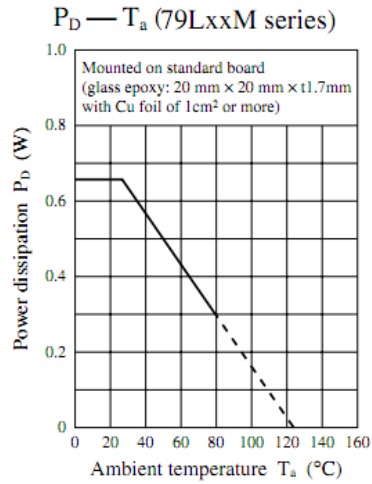
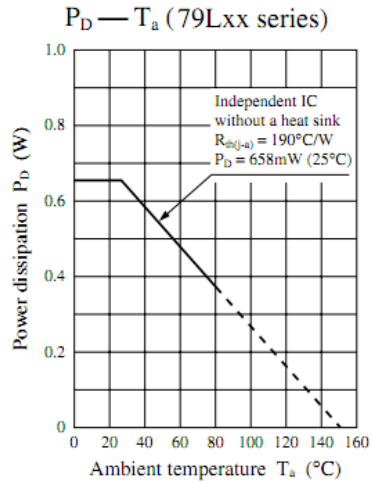
Parameter	Symbol	Test conditions	Min	Typ	Max	Unit	
Output Voltage	V_o	$25^\circ C$	-4.8	-5.0	-5.2	V	
		0-125°C	$-7V \leq V_I \leq -20V, I_o=1mA \sim 40mA$	-4.75	-5.0	-5.25	V
			$I_o=1mA \sim 70mA$	-4.75	-5.0	-5.25	V
Load Regulation	ΔV_o	$I_o=1mA \sim 100mA, 25^\circ C$		20	60	mV	
		$I_o=1mA \sim 40mA, 25^\circ C$		10	30	mV	
Line Regulation	ΔV_o	$-7V \leq V_I \leq -20V, 25^\circ C$		15	150	mV	
		$-8V \leq V_I \leq -20V, 25^\circ C$		12	100	mV	
Quiescent Current	I_q	$25^\circ C$			6	mA	
Quiescent Current Change	ΔI_q	$-8V \leq V_I \leq -20V, 0-125^\circ C$			1.5	mA	
		$1mA \leq V_I \leq 40mA, 0-125^\circ C$			0.1	mA	
Output Noise Voltage	V_N	$10Hz \leq f \leq 100KHz, 25^\circ C$		40		μV	
Ripple Rejection	RR	$-8V \leq V_I \leq -18V, f=120Hz, 0-125^\circ C$	41	49		dB	
Dropout Voltage	V_d	$25^\circ C$		1.7		V	

TYPICAL APPLICATION



Note : Bypass capacitors are recommended for optimum stability and transient response and should be located as close as Possible to the regulators.

■ Main Characteristics



X-ON Electronics

Largest Supplier of Electrical and Electronic Components

Click to view similar products for [Linear Voltage Regulators](#) category:

Click to view products by [Yongyutai Electronics](#) manufacturer:

Other Similar products are found below :

[LV5684PVD-XH](#) [MCDTSA6-2R](#) [L7815ACV-DG](#) [LV56801P-E](#) [UA7805CKC](#) [714954EB](#) [ZMR500QFTA](#) [BA033LBSG2-TR](#)
[NCV78M05ABDTRKG](#) [LV5680P-E](#) [L79M05T-E](#) [L78LR05D-MA-E](#) [NCV317MBTG](#) [NTE7227](#) [MP2018GZD-33-P](#) [MP2018GZD-5-P](#)
[LV5680NPVC-XH](#) [ZTS6538SE](#) [UA78L09CLP](#) [UA78L09CLPR](#) [CAT6221-PPTD-GT3](#) [MC78M09CDTRK](#) [NCV51190MNTAG](#)
[BL1118CS8TR1833](#) [BL8563CKETR18](#) [BL8077CKETR33](#) [BL9153-33CC3TR](#) [BL9161G-15BADRN](#) [BL9161G-28BADRN](#)
[BRCO7530MMC](#) [CJ7815B-TFN-ARG](#) [LM317C](#) [GM7333K](#) [GM7350K](#) [XC6206P332MR](#) [HT7533](#) [LM7912S/TR](#) [LT1764S/TR](#) [LM7805T](#)
[LM338T](#) [LM1117IMP-3.3/TR](#) [HT1117AM-3.3](#) [HT7550S](#) [AMS1117-3.3](#) [HT7150S](#) [78L12](#) [HT7550](#) [HT7533-1](#) [HXY6206I-2.5](#) [HT7133](#)