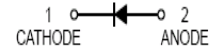


FEATURES

- For super-high speed switching circuit.
- For small current rectification.
- Allowing to rectify under($I_{F(AV)}=200mA$) condition.
- Allowing high-density mounting.



Lead-free



APPLICATIONS

- Schottky epitaxial planar.



SOD-323

ORDERING INFORMATION

| Type No. | Marking | Package Code |
|----------|---------|--------------|
| BAT54H | 2B | SOD-323 |

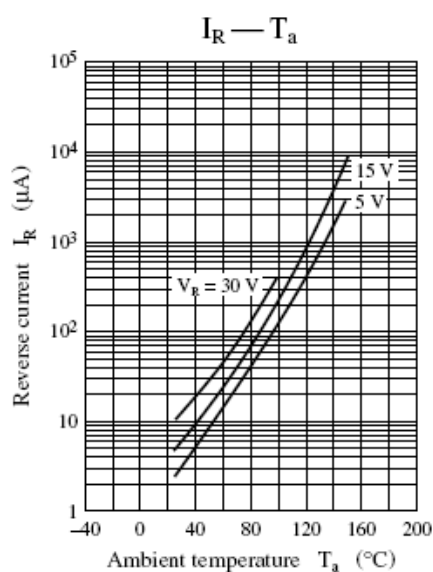
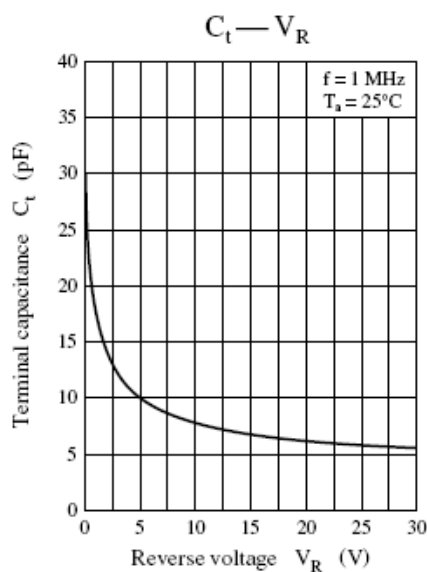
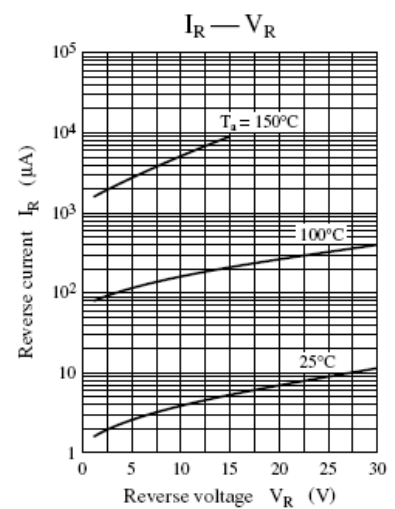
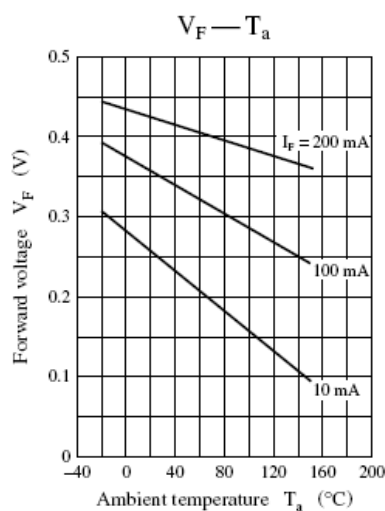
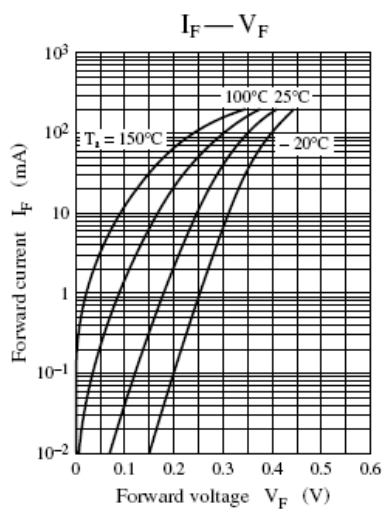
MAXIMUM RATING @ $T_a=25^\circ\text{C}$ unless otherwise specified

| Parameter | Symbol | Limits | Unit |
|---|-----------------|---------|---------------------------|
| DC reverse voltage | V_R | 30 | V |
| Repetitive peak reverse voltage | V_{RRM} | 30 | V |
| Peak forward Current | I_{FM} | 300 | mA |
| Average forward Current | $I_{F(AV)}$ | 200 | mA |
| Non-repetitive peak forward Surge Current | I_{FSM} | 1000 | mA |
| Power Dissipation | P_d | 200 | mW |
| Thermal resistance, junction to ambient air | $R_{\theta JA}$ | 635 | $^\circ\text{C}/\text{W}$ |
| Junction temperature | T_j | 150 | $^\circ\text{C}$ |
| Storage temperature range | T_{stg} | -55-150 | $^\circ\text{C}$ |

ELECTRICAL CHARACTERISTICS @ $T_a=25^\circ\text{C}$ unless otherwise specified

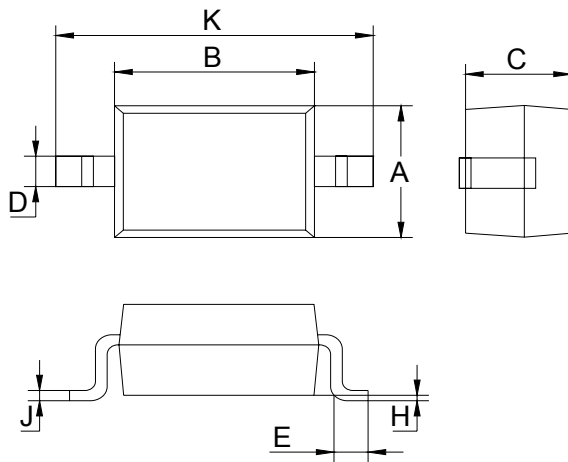
| Parameter | Symbol | Conditions | Min. | Typ. | Max. | Unit |
|---------------------------|-------------|--|------|------|------|---------|
| Reverse Breakdown Voltage | $V_{(BR)R}$ | $I_R=10\mu A$ | 30 | | | V |
| Forward voltage | V_F | $I_F=200mA$ | | | 0.55 | V |
| Reverse leakage current | I_R | $V_R=30V$ | | | 50 | μA |
| Reverse recovery time | t_{rr} | $I_F=I_R=100mA,$ $I_{rr}=10mA, R_L=100\Omega$ | | 3.0 | | ns |
| Total capacitance | C_T | $V_R=0V, f=1.0MHz$ | | 30 | | pF |

TYPICAL CHARACTERISTICS @ $T_a=25^\circ C$ unless otherwise specified



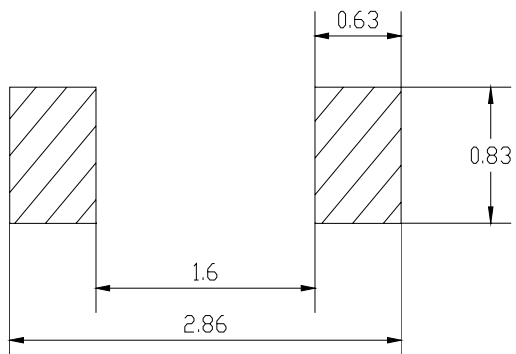
Plastic surface mounted package

SOD-323



| SOD-323 | | |
|----------------------|-------------|-------|
| Dim | Min | Max |
| A | 1.275 | 1.325 |
| B | 1.675 | 1.725 |
| C | 0.9 Typical | |
| D | 0.25 | 0.35 |
| E | 0.27 | 0.37 |
| H | 0.02 | 0.1 |
| J | 0.1 Typical | |
| K | 2.6 | 2.7 |
| All Dimensions in mm | | |

SOLDERING FOOTPRINT



Unit : mm

X-ON Electronics

Largest Supplier of Electrical and Electronic Components

Click to view similar products for [Schottky Diodes & Rectifiers](#) category:

Click to view products by [Yongyutai Electronics](#) manufacturer:

Other Similar products are found below :

[MA4E2039](#) [MA4E2508M-1112](#) [MBR1545CT](#) [MMBD301M3T5G](#) [RB160M-50TR](#) [D83C](#) [BAS16E6433HTMA1](#) [BAT 54-02LRH E6327](#)
[NRVBAF360T3G](#) [NSR05F40QNXT5G](#) [NTE555](#) [JANS1N6640](#) [SK310-T](#) [SK34B-TP](#) [SS3003CH-TL-E](#) [GA01SHT18](#)
[CRS10I30A\(TE85L,QM](#) [MA4E2501L-1290](#) [MBRA140TRPBF](#) [MBRB30H30CT-1G](#) [BAT 15-04R E6152](#) [JANTX1N5712-1](#) [DMJ3940-000](#)
[SB007-03C-TB-E](#) [SK33B-TP](#) [NRVBB20100CTT4G](#) [NRVBM120LT1G](#) [NTSB30U100CT-1G](#) [VS-6CWQ10FNHM3](#) [CRG04\(T5L,TEMQ\)](#)
[ACDBA1100LR-HF](#) [ACDBA1200-HF](#) [ACDBA240-HF](#) [ACDBA3100-HF](#) [CDBQC0530L-HF](#) [CDBQC0240LR-HF](#) [ACDBA260LR-HF](#)
[ACDBA1100-HF](#) [MA4E2502L-1246](#) [10BQ015-M3/5BT](#) [NRVBM120ET1G](#) [CRS08TE85LQM](#) [PMAD1108-LF](#) [B120Q-13-F](#) [1N5819T-G](#)
[B0530WSQ-7-F](#) [PDS1040Q-13](#) [B160BQ-13-F](#) [SDM05U20CSP-7](#) [B140S1F-7](#)