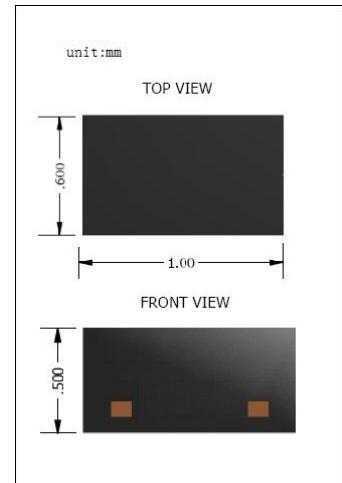
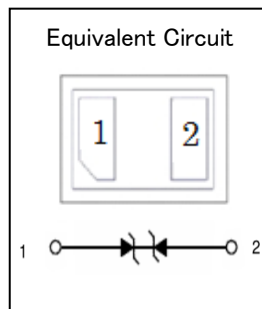


- ◇ Bi-Directional Transient Voltage Suppressor
- ◇ Low Capacitance and Low Leakage
- ◇ Response Time is Typically < 1 ns
- ◇ IEC61000-4-2 Level 4 ESD Protection
- ◇ ROHS Compliant
- ◇ UL-94 V-0 / Green EMC
- ◇ Matte Tin Lead finish (Pb-Free)

Device Marking Code	
ESD8D5.0CAT5G	AK



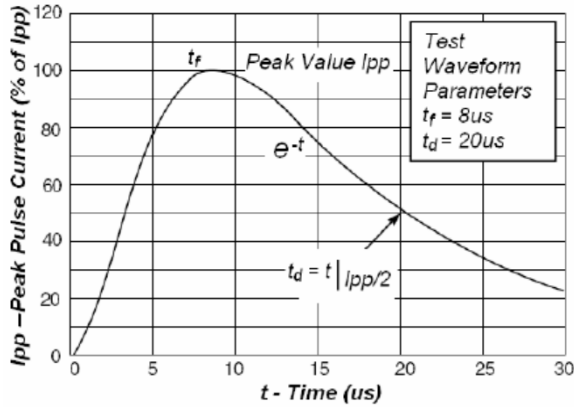
MAXIMUM RATINGS (Ta = 25 °C)

Symbol	Parameter	Value	Units
V _{ESD-Air}	ESD Voltage IEC61000-4-2 Air	±25	kV
V _{ESD-Contact}	ESD Voltage IEC61000-4-2 Contact	±20	kV
PD	Total Power Dissipation on FR-5 Board	200	mW
T _J	Junction Temperature	-55 to 150	°C
T _{STG}	Storage Temperature	-55 to 150	°C
TL	Lead Solder Temperature - Maximum (10 Second Duration)	260	°C

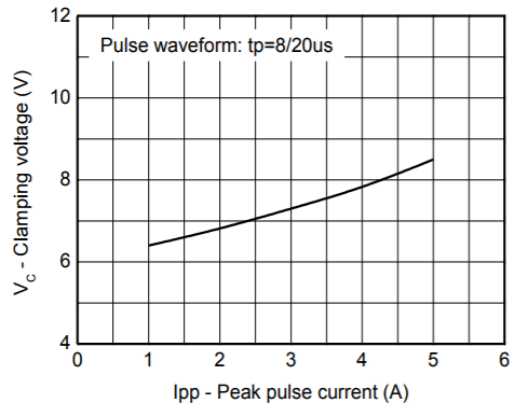
ELECTRICAL CHARACTERISTICS (Ta = 25 °C unless otherwise noted)

Symbol	Parameter	Conditions	Min	Typ	Max	Units
V _{RWM}	Reverse Working Peak Voltage				5.0	V
V _{BR}	Reverse Breakdown Voltage	I _T = 1mA	5.6		8.0	V
I _{R1}	Reverse Current	V _{RWM} = 5V			0.5	μA
I _{R2}	Reverse Current	V _R = 3.5V			0.3	μA
V _c	Clamping Voltage	I _{pp} = 1A			9.8	V
V _c	Clamping Voltage	I _{pp} = 5.5A			12.5	V
C	Capacitance	V _R = 0V, f = 1MHz			15	pF

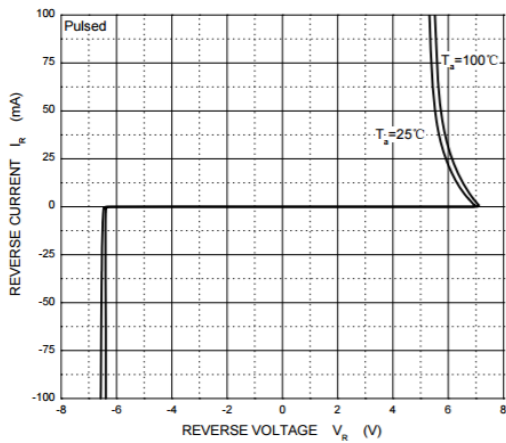
Typical Characteristics



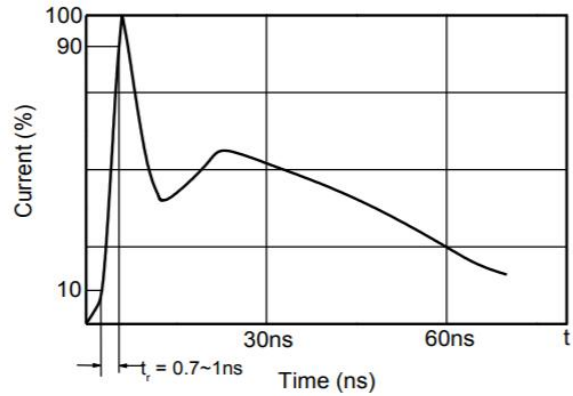
Pulse Waveform



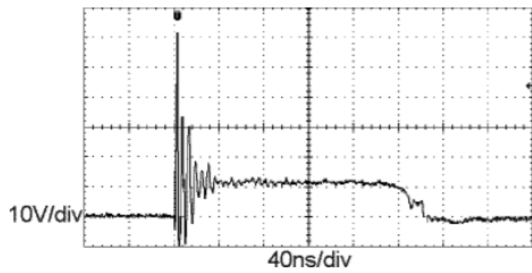
Clamping voltage vs. Peak pulse current



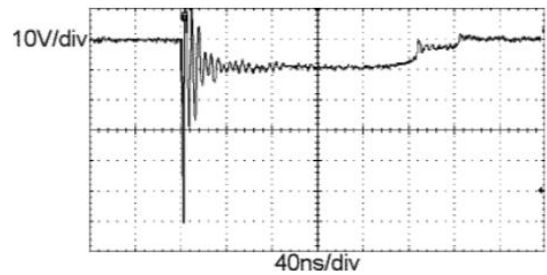
Reverse Characteristics



Contact discharge current waveform per IEC61000-4-2



ESD clamping
(+8kV contact discharge per IEC61000-4-2)

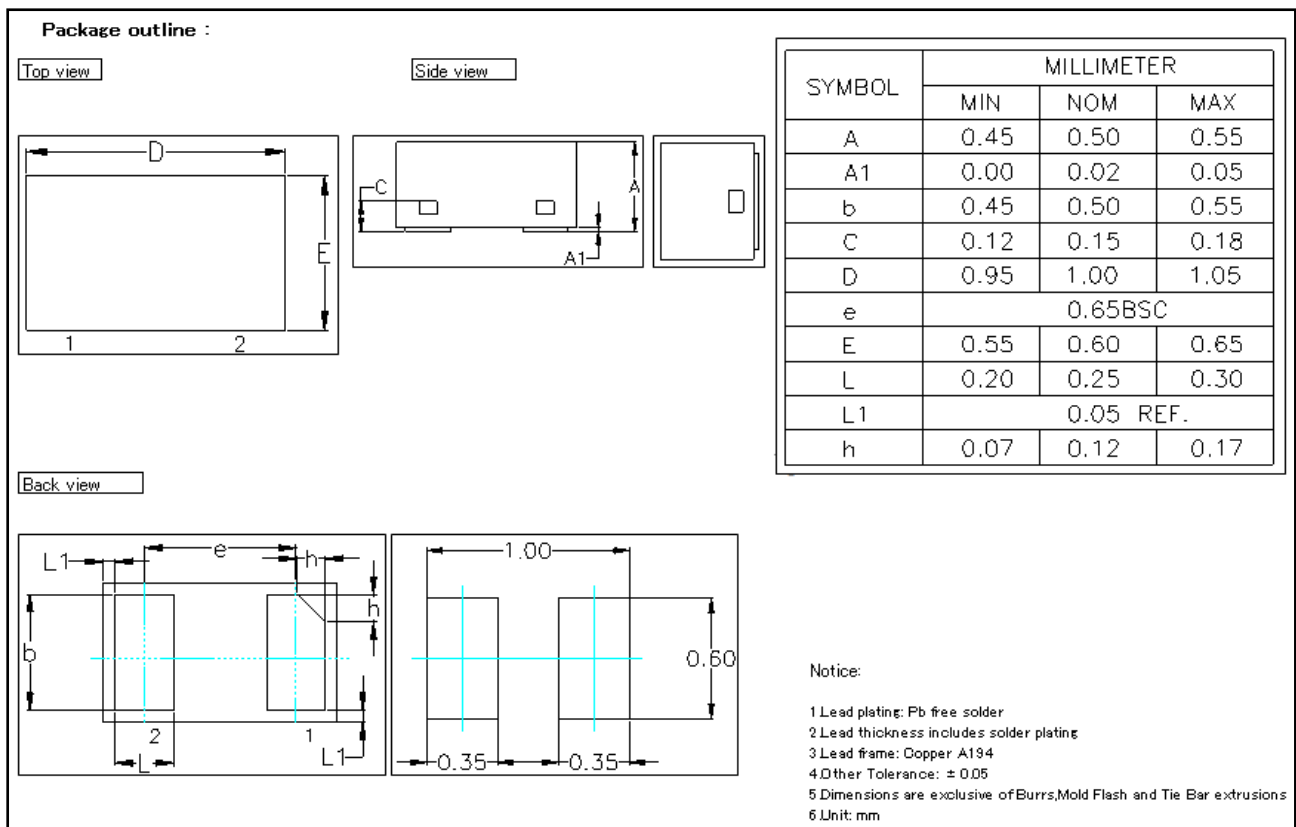


ESD clamping
(-8kV contact discharge per IEC61000-4-2)

ORDERING INFORMATION

Device	Package	Shipping	Tape wide	Emboss pitch	Tape specification	Notes
ESD8D5.0CAT5G	SOD-882	Tape & Reel 10000pcs /7" Reel	8mm	4mm	Conductive	

PACKAGE DIMENSIONS



X-ON Electronics

Largest Supplier of Electrical and Electronic Components

Click to view similar products for [ESD Suppressors / TVS Diodes](#) category:

Click to view products by [Yongyutai Electronics](#) manufacturer:

Other Similar products are found below :

[60KS200C](#) [D18V0L1B2LP-7B](#) [D5V0F4U5P5-7](#) [NTE4902](#) [P4KE27CA](#) [P6KE11CA](#) [P6KE39CA-TP](#) [P6KE8.2A](#) [JANTX1N6053A](#)
[SA110CA](#) [SA60CA](#) [SA64CA](#) [SMBJ12CATR](#) [SMBJ33CATR](#) [SMBJ8.0A](#) [ESD101-B1-02ELS E6327](#) [ESD105-B1-02EL E6327](#) [ESD112-B1-02EL E6327](#) [ESD119B1W01005E6327XTSA1](#) [ESD5V0L1B02VH6327XTSA1](#) [ESD7451N2T5G](#) [19180-510](#) [CPDT-5V0USP-HF](#)
[3.0SMCJ33CA-F](#) [3.0SMCJ36A-F](#) [HSPC16701B02TP](#) [JANTX1N6126A](#) [JANTX1N6462](#) [JANTX1N6465](#) [USB50805e3/TR7](#)
[D3V3Q1B2DLP3-7](#) [D55V0M1B2WS-7](#) [DRTR5V0U4SL-7](#) [SCM1293A-04SO](#) [ESD200-B1-CSP0201 E6327](#) [SM12-7](#) [SM1605E3/TR13](#)
[SMLJ45CA-TP](#) [CEN955 W/DATA](#) [82350120560](#) [VESD12A1A-HD1-GS08](#) [CPDUR5V0R-HF](#) [CPDQC5V0U-HF](#) [CPDQC5V0USP-HF](#)
[CPDQC5V0-HF](#) [D1213A-01LP4-7B](#) [ESD101-B1-02EL E6327](#) [824500181](#) [MMAD1108/TR13](#) [5KP100A](#)