

DESCRIPTION

The KGBLCxxCI-LF-T7 are ultra low capacitance transient voltage suppressor arrays, designed to protect applications such as portable electronics and SMART phones. This series is available in both unidirectional and bidirectional configurations and is rated at 350 Watts for an 8/20 μ s wave shape.

The KGBLCxxCI-LF-T7 meets IEC 61000-4-2 (ESD) and IEC 61000-4-4 (EFT) requirements. At higher operating frequencies or faster edge rates, insertion loss and signal integrity are a major concern. This series offers a ultra low capacitance and low leakage current in a miniature SOD-323 package.

FEATURES

- ✧ Transient protection for high-speed data lines
IEC 61000-4-2 (ESD) $\pm 8\text{kV}$ (Contact)
 $\pm 15\text{kV}$ (Air)
IEC 61000-4-4 (EFT) 40A (5/50 ns)
- ✧ Protects one I/O line (bidirectional)
- ✧ Working voltages : 3V, 5V, 8V, 12V, 15V, 18V, 20V, 24V, 36V
- ✧ Low clamping voltage
- ✧ Low leakage current
- ✧ Response time is < 1 ns

MACHANICAL DATA

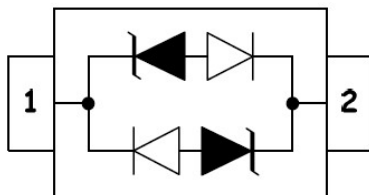
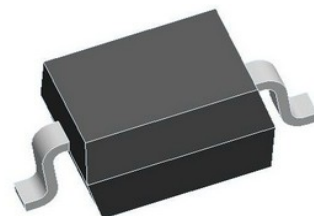
- ✧ SOD-323 package
- ✧ Flammability Rating: UL 94V-0
- ✧ Packaging: Tape and Reel
- ✧ High temperature soldering guaranteed:
260 $^{\circ}\text{C}$ /10s
- ✧ Reel size: 7 inch
- ✧ MSL1

ORDERING INFORMATION

- ✧ Device: KGBLCxxCI-LF-T7
- ✧ Package: SOD-323
- ✧ Material: Halogen free
- ✧ Packing: Tape & Reel
- ✧ Quantity per reel: 3,000pcs

APPLICATIONS

- ✧ Cell Phone Handsets and Accessories
- ✧ Microprocessor based equipment
- ✧ Personal Digital Assistants (PDA's)
- ✧ Notebooks, Desktops, and Servers
- ✧ Portable Instrumentation
- ✧ Peripherals
- ✧ USB Interface

PIN CONFIGURATION**PACKAGE OUTLINE**

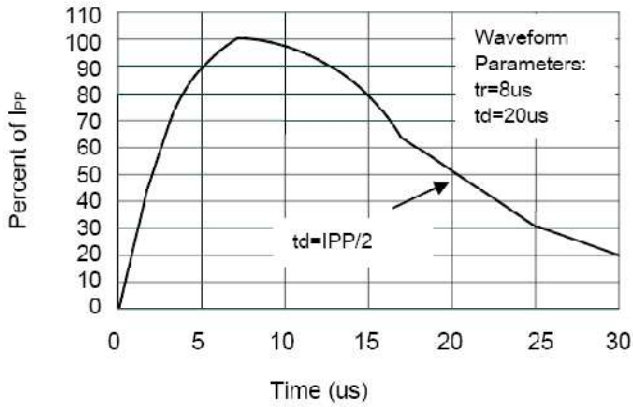
ABSOLUTE MAXIMUM RATING

| Symbol | Parameter | Value | Units |
|-----------|---------------------------------|----------|--------------|
| V_{ESD} | ESD per IEC 61000-4-2 (Air) | ± 15 | kV |
| | ESD per IEC 61000-4-2 (Contact) | ± 8 | |
| P_{PP} | Peak Pulse Power (8/20 μ s) | 350 | W |
| T_{OPT} | Operating Temperature | -55/+150 | $^{\circ}$ C |
| T_{STG} | Storage Temperature | -55/+150 | $^{\circ}$ C |
| T_L | Lead Soldering Temperature | 260 | $^{\circ}$ C |

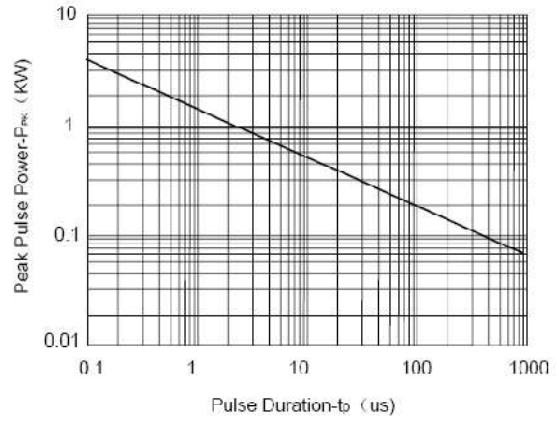
ELECTRICAL CHARACTERISTICS ($T_{amb}=25^{\circ}$ C)

| PART NUMBER | DEVICE MARKING | V_{RWM} (V) Max | $V_B@1mA$ (V) Min | $V_C@1A$ (V) Max | $V_C@I_{pp}$ (V) | | $V_C@I_{pp}$ (V) | | I_R (μ A) Max | C_T (pF) Typ. |
|-----------------|----------------|-------------------------|-------------------------|------------------------|---------------------|-----------------|---------------------|-----------------|----------------------------|-----------------------|
| | | | | | Max | I_{pp} (A) | Max | I_{pp} (A) | | |
| KGBLC03CI-LF-T7 | CC | 3.0 | 4.0 | 7.0 | 13.9 | 8 | 20.0 | 20 | 5 | 0.8 |
| KGBLC05CI-LF-T7 | AC | 5.0 | 6.0 | 9.8 | 18.3 | 8 | 20.0 | 18 | 1 | 0.8 |
| KGBLC08CI-LF-T7 | BC | 8.0 | 8.5 | 13.4 | 18.5 | 8 | 24.0 | 18 | 1 | 0.8 |
| KGBLC12CI-LF-T7 | DC | 12.0 | 13.3 | 19.0 | 24.0 | 6 | 28.6 | 12 | 1 | 0.8 |
| KGBLC15CI-LF-T7 | EC | 15.0 | 16.7 | 24.0 | 29.0 | 5 | 31.8 | 10 | 1 | 0.8 |
| KGBLC18CI-LF-T7 | FC | 18.0 | 20.0 | 35.0 | 45.0 | 5 | 53.0 | 7 | 1 | 0.8 |
| KGBLC20CI-LF-T7 | GC | 20.0 | 22.0 | 38.0 | 45.0 | 4 | 55.0 | 7 | 1 | 0.8 |
| KGBLC24CI-LF-T7 | HC | 24.0 | 26.7 | 43.0 | 45.0 | 3 | 56.0 | 6 | 1 | 0.8 |
| KGBLC36CI-LF-T7 | IC | 36.0 | 40.0 | 60.0 | 65.0 | 2 | 75.0 | 4.5 | 1 | 0.8 |

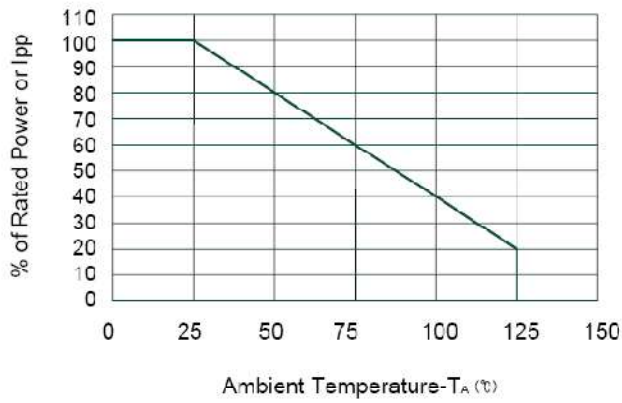
ELECTRICAL CHARACTERISTICS CURVE



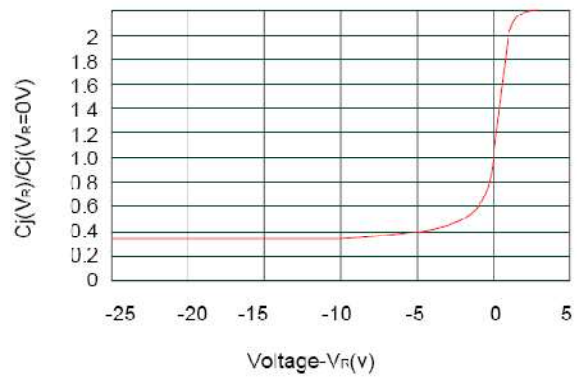
Pulse Waveform



Non-Repetitive Peak Pulse Power vs. Pulse Time

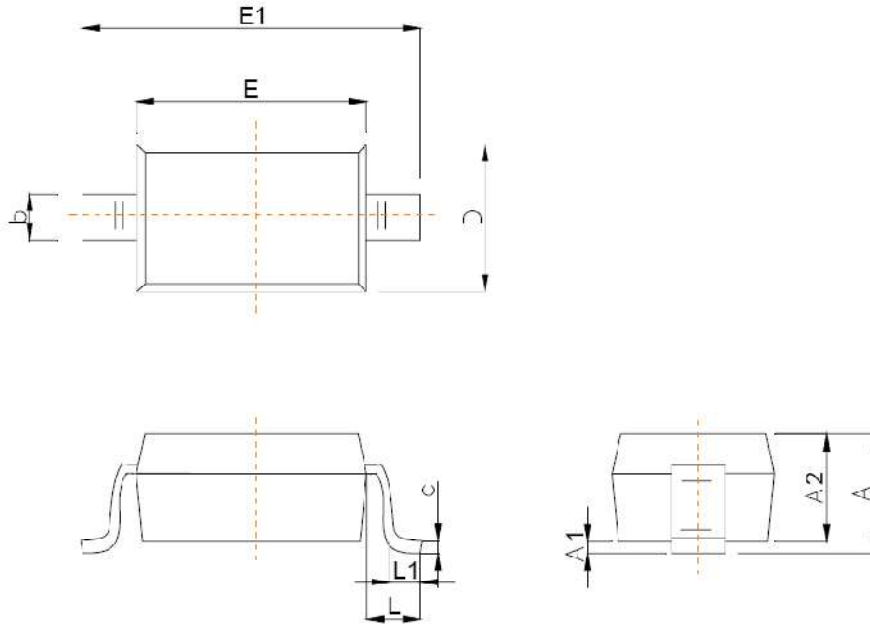


Power Derating Curve

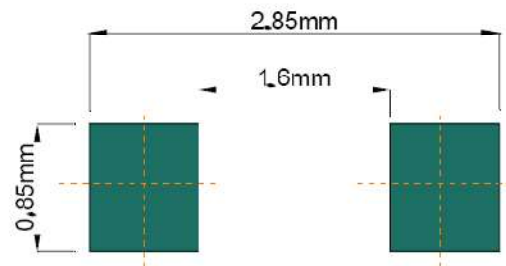


Junction Capacitance vs. Reverse Voltage

SOD-323 PACKAGE OUTLINE DIMENSIONS



| Symbol | Dimensions In Millimeters | |
|--------|---------------------------|-------|
| | Min | Max |
| A | | 1.00 |
| A1 | 0.000 | 0.100 |
| A2 | 0.800 | 0.900 |
| b | 0.250 | 0.350 |
| c | 0.080 | 0.150 |
| D | 1.200 | 1.400 |
| E | 1.600 | 1.800 |
| E1 | 2.500 | 2.700 |
| e | 1.800 | 2.040 |
| L | 0.475 REF | |
| L1 | 0.250 | 0.400 |
| θ | 0° | 8° |



Recommended Pad outline

X-ON Electronics

Largest Supplier of Electrical and Electronic Components

Click to view similar products for [ESD Suppressors / TVS Diodes](#) category:

Click to view products by [Yongyutai Electronics](#) manufacturer:

Other Similar products are found below :

[60KS200C](#) [D18V0L1B2LP-7B](#) [D5V0F4U5P5-7](#) [NTE4902](#) [P4KE27CA](#) [P6KE11CA](#) [P6KE39CA-TP](#) [P6KE8.2A](#) [JANTX1N6053A](#)
[SA110CA](#) [SA60CA](#) [SA64CA](#) [SMBJ12CATR](#) [SMBJ33CATR](#) [SMBJ8.0A](#) [ESD101-B1-02ELS E6327](#) [ESD105-B1-02EL E6327](#) [ESD112-B1-02EL E6327](#) [ESD119B1W01005E6327XTSA1](#) [ESD5V0L1B02VH6327XTSA1](#) [ESD7451N2T5G](#) [19180-510](#) [CPDT-5V0USP-HF](#)
[3.0SMCJ33CA-F](#) [3.0SMCJ36A-F](#) [HSPC16701B02TP](#) [JANTX1N6126A](#) [JANTX1N6462](#) [JANTX1N6465](#) [USB50805e3/TR7](#)
[D3V3Q1B2DLP3-7](#) [D55V0M1B2WS-7](#) [DRTR5V0U4SL-7](#) [SCM1293A-04SO](#) [ESD200-B1-CSP0201 E6327](#) [SM12-7](#) [SM1605E3/TR13](#)
[SMLJ45CA-TP](#) [CEN955 W/DATA](#) [82350120560](#) [VESD12A1A-HD1-GS08](#) [CPDUR5V0R-HF](#) [CPDQC5V0U-HF](#) [CPDQC5V0USP-HF](#)
[CPDQC5V0-HF](#) [D1213A-01LP4-7B](#) [ESD101-B1-02EL E6327](#) [824500181](#) [MMAD1108/TR13](#) [5KP100A](#)