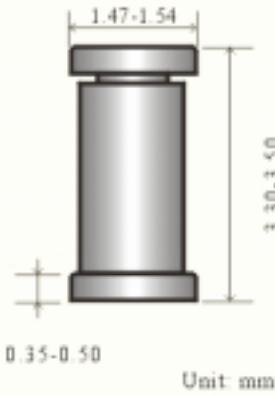




LL-34 GLASS



LL-34(Mini-melf) Glass Trigger Diode

特征 Features

- 玻璃密封焊接; Hermetically Sealed Glass
- 反向漏电小; Low Reverse Leakage
- 高稳定性和可靠性。High Stability and High Reliability
- 较强的正向浪涌承受 High Forward Surge Capability

机械数据 Mechanical Data

- 封装: LL-34 玻璃封装 Case: LL-34 Glass Case
- 安装位置: 任意 Mounting Position: Any

极限值和温度特性($T_A = 25$ 除非另有规定)

Maximum Ratings & Thermal Characteristics (Ratings at 25 ambient temperature unless otherwise specified.)

| 参数 Parameters | 符号 Symbol | 数值 Value | 单位 Unit |
|--------------------------------------|-----------|----------|---------|
| 功率消耗 Power Dissipation | P_d | 350 | mW |
| 工作及存储温度 Storage temperature | T_s | -40+150 | |
| 工作结温度 Operating Junction Temperature | T_j | 100 | |

Notes: The glass passivated, three-layer, two terminal, axial lead, hermetically sealed diacs are designed specifically for triggering thyristors. They demonstrate low breakover current at breakover voltage as they withstand peak pulse current. The breakover symmetry is within four bolts with a typical breakover voltage of 32 volts. These diacs are intended for use in thyristor phase control, circuits for lamp-dimming, universal-motor speed controls, and heat controls.

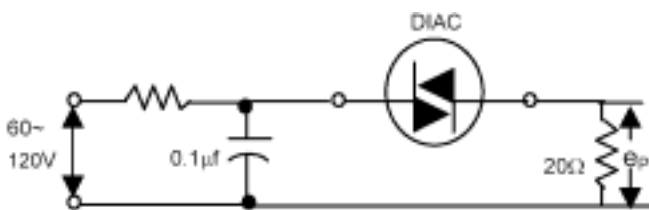
电特性 Electrical Characteristics (Ratings at 25 ambient temperature unless otherwise specified).

| Test | Symbol | Min | Typ. | Max. | Unit |
|--|-----------------|-----|------|------|---------|
| Breakover Voltage | VBO1&VBO2 | 28 | 32.0 | 36 | V |
| Breakover Currents | IBO1&IBO2 | - | - | 200 | μA |
| Breakover Voltage Symmetry | $ VBO1 - VBO2 $ | - | - | 3.8 | V |
| Dynamic Breakover Voltage $I=[IBO \text{ to } IF = 10mA]$ | $ \pm V $ | 5 | - | - | V |
| Thermal Impedance Junction To Ambient | R_{JA} | - | - | 60 | /W |

MAXIMUM RATINGS AT 50 Ambient

- Peak Current(10 μ sec duration, 120 cycle repetition rate) $I_p \pm 2$ Amperes Max.
- Peak output voltage $e_p \pm 3$ volts Max*

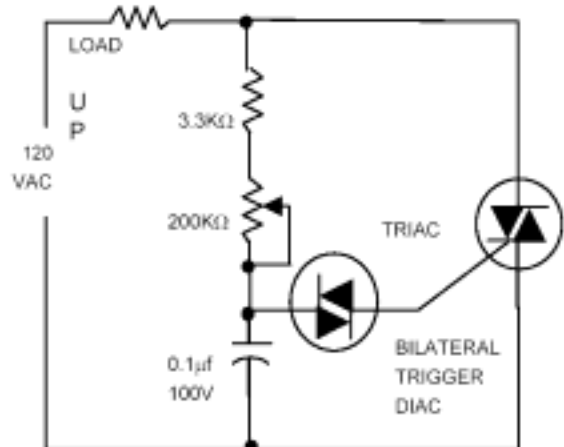
*CIRCUIT FOR PEAK OUTPUT VOLTAGE TEST



Characteristics at $T_{amb} = 25^\circ C$

TYPICAL DIAC-TRIAC

FULL-WAVE PHASE CONTROL CIRCUIT



X-ON Electronics

Largest Supplier of Electrical and Electronic Components

Click to view similar products for [Diacs](#) category:

Click to view products by [Yongyutai Electronics](#) manufacturer:

Other Similar products are found below :

[DB3](#) [LLDB3](#) [DB3](#) [DB3PF](#) [DB3W](#) [DB4](#) [DB3W](#) [LLDB3](#) [LLDB3PF](#) [DB3W](#) [DLDB3](#) [DB3](#) [NTE6407](#) [DB3TG](#) [DB3](#) [DB4](#) [DB4](#) [NTE6412](#)
[DB3-22](#) [LLDB3](#) [DB4](#) [NTE6408](#) [NTE6411](#) [BEP0080SB](#) [BEP0300SC](#) [BEP3500SB](#) [BR100-03LLD](#) [BR100-04LLD](#) [2SC2983](#) [DB31](#) [DB32](#)
[DB6](#) [DC34](#) [DB3](#) [DB3W](#) [DB3](#) [K150SAW](#) [K150](#) [SODDB3](#) [DB3](#) [DB4](#) [SMDB3](#) [TMMDB3](#) [TMMDB3TG](#)