

Features

- Low VF
- High reliability
- We declare that the material of product compliance with RoHS requirements and Halogen Free
- S-prefix for automotive and other applications requiring unique site and control change requirements; AEC-Q101 qualified and PPAP capable

Application

- Low current rectification



DFN1006 bottom view



Schematic diagram



Marking and pin assignment



Pb-Free



RoHS



Halogen-Free

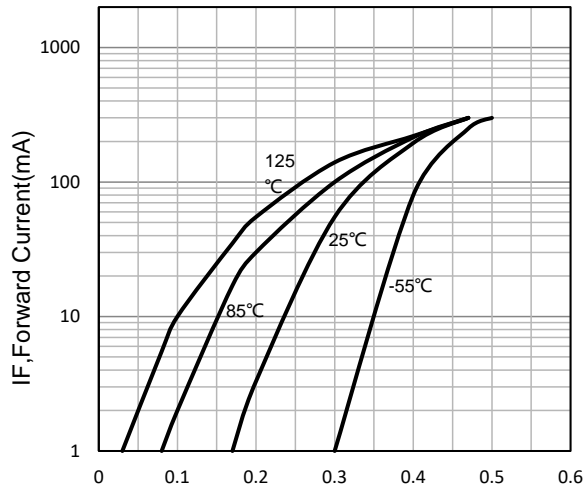
Maximum Ratings(T_a=25°C unless otherwise noted)

Symbol	Parameter	Value	Unit
V _R	Reverse voltage (DC)	30	V
I _O	Average rectifier forward current	200	mA
I _{FSM}	Forward current surge peak (60Hz · 1cyc)	500	mA
P _D	Maximum Power Dissipation	200	mW
R _{θJA}	Thermal Resistance, Junction to Ambient	500	°C/W
T _J	Junction temperature	125	°C
T _{stg}	Storage temperature	-55~+125	°C

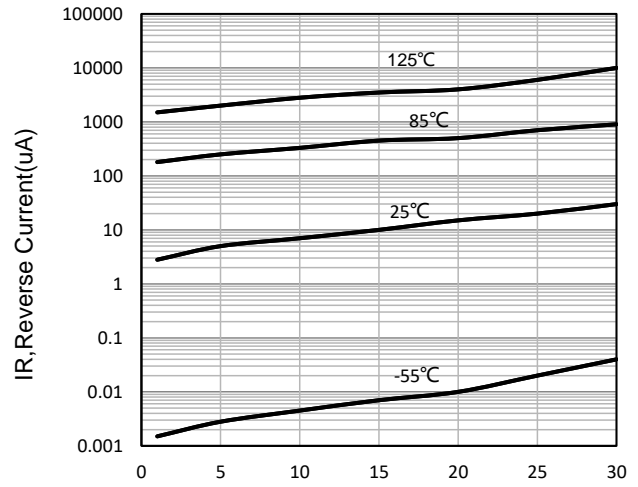
Electrical Characteristics (T_J=25°C unless otherwise noted)

Symbol	Parameter	Condition	Min	Typ	Max	Unit
I _R	Reverse current	V _R =10V	--	--	30	μA
V _F	Forward voltage	I _F =10mA	--	--	0.35	V
		I _F =20mA	--	--	0.38	V
		I _F =100mA	--	--	0.4	V
		I _F =200mA	--	--	0.5	V

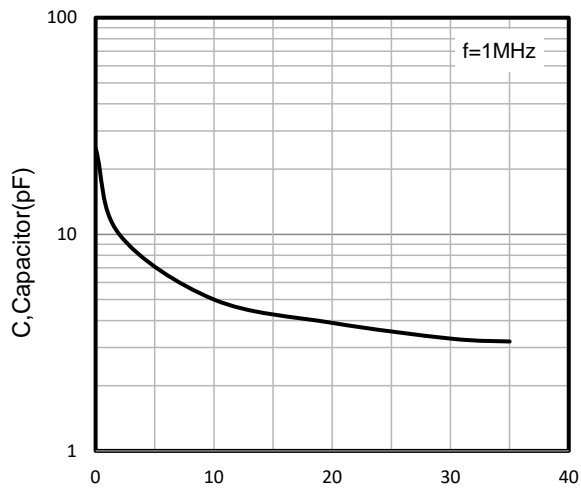
Typical Operating Characteristics



VF, Forward Voltage(V)
Forward Characteristics

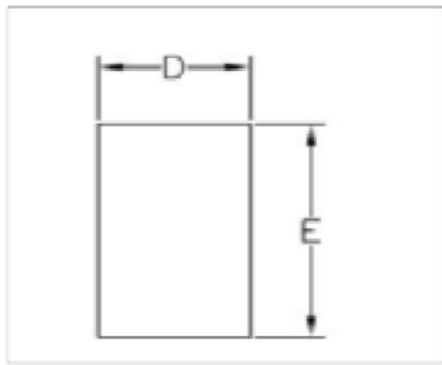


VR, Reverse Voltage(V)
Reverse Characteristics

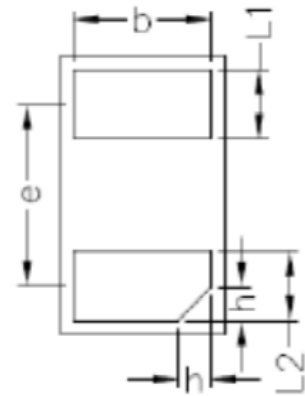


VR, Reverse Voltage(V)
Capacitor Characteristics

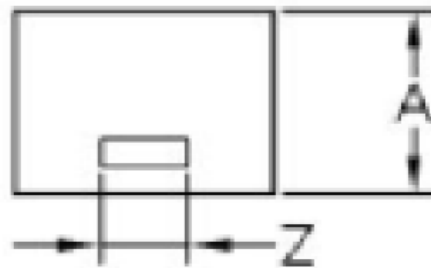
DFN1006 Package information



TOP VIEW



BOTTOM VIEW



SIDE VIEW

Symbol	Dimensions in Millimeters(mm)		Dimensions In Inches	
	Min	Max	Min	Max
D	0.550	0.650	0.022	0.026
E	0.950	1.050	0.037	0.041
L1	0.200	0.300	0.008	0.012
L2	0.200	0.300	0.008	0.012
A	0.450	0.550	0.018	0.022
Z	0.150	0.250	0.006	0.010
b	0.450	0.550	0.018	0.022
e	0.64REF		0.025REF	
h	0.070	0.170	0.003	0.007

X-ON Electronics

Largest Supplier of Electrical and Electronic Components

Click to view similar products for [Diodes - General Purpose, Power, Switching category:](#)

Click to view products by [Yongyutai Electronics manufacturer:](#)

Other Similar products are found below :

[MMBD3004S-13-F](#) [1N3611](#) [NTE156A](#) [NTE6244](#) [1SS400CST2RA](#) [SDAA13](#) [SHN2D02FUTW1T1G](#) [1N4449](#) [1N456A](#) [1N914BTR](#)
[D291S45T](#) [BAS 16-02L E6327](#) [BAS 16-02V H6327](#) [BAS 21U E6327](#) [BAS 28 E6327](#) [BAW56DWQ-7-F](#) [BAW75-TAP](#) [MM230L-CAA](#)
[IDW40E65D1](#) [JAN1N3600](#) [JAN1N4454UR-1](#) [SMMSD4148T3G](#) [BYW95B/A52A](#) [NSVDAN222T1G](#) [CDSZC01100-HF](#) [BAV70HDW-7](#)
[BAS28-7](#) [JANTX1N6640](#) [BAW56HDW-13](#) [BAS28 TR](#) [VS-HFA04SD60STR-M3](#) [1SS388-TP](#) [BAV99TQ-13-F](#) [BAV99HDW-13](#) [1N4004](#)
[MMDB30-E28X](#) [LS4148](#) [IDV15E65D2](#) [W0503RH200S0L](#) [W0503SH200S0L](#) [M0268SJ200NLF](#) [M0268RJ200NLF](#) [S3MBF](#) [US1J](#)
[DAN217U-TP](#) [SHV-06JNS-Q](#) [IDW30C65D1](#) [IDW80C65D1](#) [VS-HFA30TA60CSR-M3](#) [M1MA152WAT1](#)