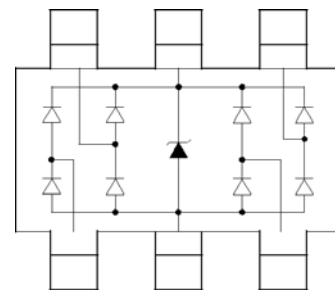
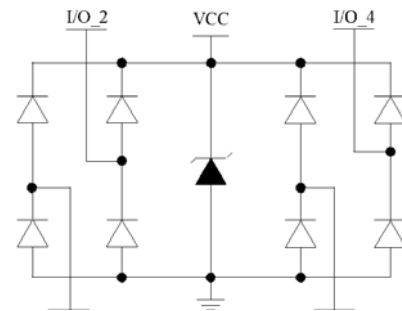


## General Description

CS0816 is a low capacitance Transient Voltage Suppressor (TVS) designed to provide electrostatic discharge (ESD) protection for high-speed data interfaces. With typical capacitance of 0.7pF only, CS0816 is designed to protect parasitic-sensitive systems against over-voltage and over-current transient events.

CS0816 uses small SOT23-6 package. Each CS0816 device can protect four high-speed data lines. The combined features of low capacitance, small size and high ESD robustness make CS0816 ideal for high-speed data ports and high-frequency lines (e.g., HDMI & DVI) applications. The low clamping voltage of the CS0816 guarantees a minimum stress on the protected IC.



SOT23-6  
(Top View)

## Features

- Transient protection for high-speed data lines  
IEC 61000-4-2 (ESD)  $\pm 15\text{kV}$  (Air)  
 $\pm 8\text{kV}$  (Contact)  
IEC 61000-4-4 (EFT) 40A (5/50 ns)  
Cable Discharge Event (CDE)
- Small package (2.9mm  $\times$  2.8mm  $\times$  1.4mm)
- Protects four data lines
- Low capacitance: 0.7pF Typical (I/O-GND)
- Low leakage current: 0.1 $\mu\text{A}$  @  $V_{RWM}$  (Typical)
- Low clamping voltage
- Each I/O pin can withstand over 1000 ESD strikes for  $\pm 8\text{kV}$  contact discharge
- Green Part

## Applications

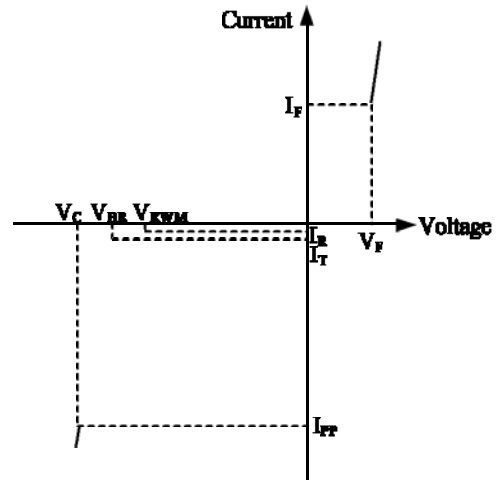
- Video Graphics Cards
- Desktops, Servers and Notebooks
- IEEE 1394 Ports
- USB2.0 Power and Data Line Protection
- Display Ports
- SIM Ports

**Absolute Maximum Rating**

Symbol	Parameter	Value	Units
$V_{ESD}$	ESD per IEC 61000-4-2 (Air) ESD per IEC 61000-4-2 (Contact)	$\pm 17$ $\pm 12$	kV
$T_{OPT}$	Operating Temperature	-55/+125	°C
$T_{STG}$	Storage Temperature	-55/+150	°C

**Electrical Characteristics (T = 25°C)**

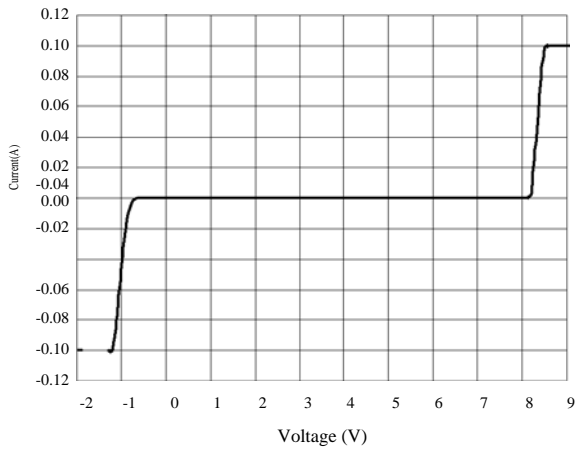
Symbol	Parameter
$V_{RWM}$	Nominal Reverse Working Voltage
$I_R$	Reverse Leakage Current @ $V_{RWM}$
$V_{BR}$	Reverse Breakdown Voltage @ $I_T$
$I_T$	Test Current for Reverse Breakdown
$V_C$	Clamping Voltage @ $I_{PP}$
$I_{PP}$	Maximum Peak Pulse Current
$C_{ESD}$	Parasitic Capacitance
$V_R$	Reverse Voltage
f	Small Signal Frequency
$I_F$	Forward Current
$V_F$	Forward Voltage @ $I_F$



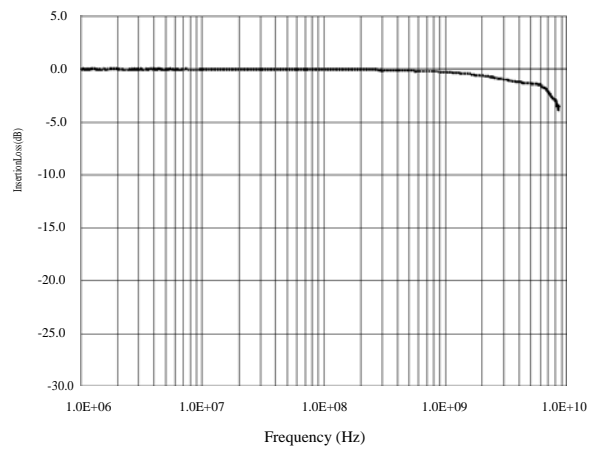
Uni-Directional TVS

Symbol	Test Condition	Minimum	Typical	Maximum	Units
$V_{RWM}$				5.0	V
$I_R$	$V_{RWM} = 5V, T = 25^\circ C$ Between I/O and GND		0.1	1.0	$\mu A$
$V_{BR}$	$I_T = 1mA$ Between I/O and GND	6.0	8.0	10.0	V
$V_C$	$I_{PP} = 1A, t_p = 8/20\mu s$ Between I/O and GND			12	V
$C_{ESD}$	$V_R = 0V, f = 1MHz$ Between I/O and GND		0.7	0.8	pF
$C_{ESD}$	$V_R = 0V, f = 1MHz$ Between I/O and I/O		0.35		pF

**Voltage Sweeping of I/O to GND**

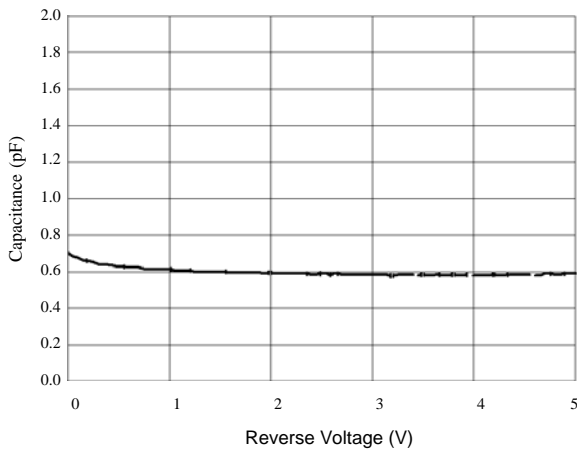


**Insertion Loss S21 of I/O to GND**

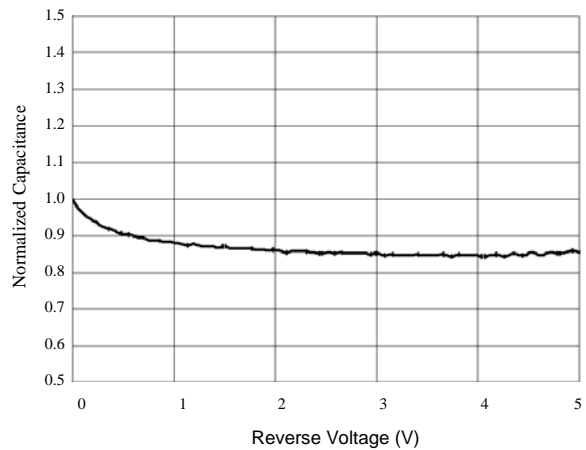


**Capacitance vs. Voltage of I/O to GND (f = 1MHz)**

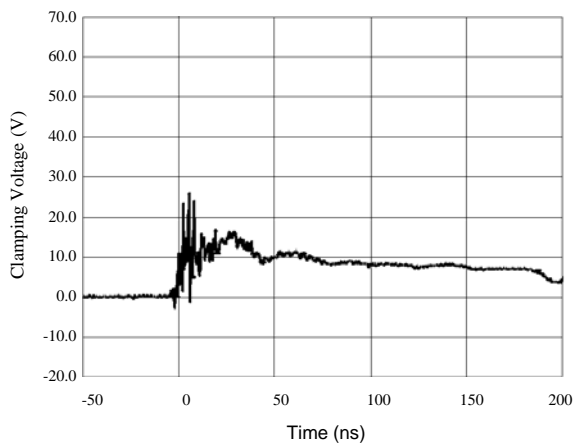
Capacitance vs. Reverse Voltage



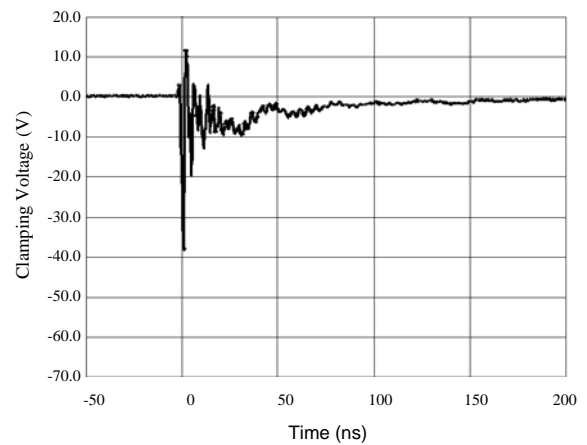
Normalized Capacitance vs. Reverse Voltage



**ESD Clamping of I/O to GND (+8kV Contact per IEC 61000-4-2)**

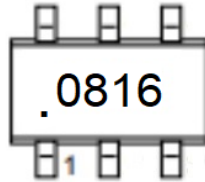


**ESD Clamping of I/O to GND (-8kV Contact per IEC 61000-4-2)**



SOT23-6

**Marking**



**Ordering information**

Order code	Package	Base qty	Delivery mode
UMW CS0816	SOT23-6	3000	Tape and reel

## X-ON Electronics

Largest Supplier of Electrical and Electronic Components

*Click to view similar products for [ESD Suppressors / TVS Diodes](#) category:*

*Click to view products by [Youtai](#) manufacturer:*

Other Similar products are found below :

[60KS200C](#) [D18V0L1B2LP-7B](#) [D5V0F4U5P5-7](#) [NTE4902](#) [P4KE27CA](#) [P6KE11CA](#) [P6KE8.2A](#) [JANTX1N6053A](#) [SA60CA](#) [SA64CA](#)  
[SMBJ12CATR](#) [SMBJ33CATR](#) [SMBJ6.5A](#) [SMBJ8.0A](#) [ESD101-B1-02ELS E6327](#) [ESD112-B1-02EL E6327](#) [ESD7451N2T5G](#) [19180-510](#)  
[CPDT-5V0USP-HF](#) [3.0SMCJ33CA-F](#) [3.0SMCJ36A-F](#) [HSPC16701B02TP](#) [JANTX1N6126A](#) [D3V3Q1B2DLP3-7](#) [D55V0M1B2WS-7](#)  
[SCM1293A-04SO](#) [ESD200-B1-CSP0201 E6327](#) [SM12-7](#) [CEN955 W/DATA](#) [VESD12A1A-HD1-GS08](#) [CPDQC5V0-HF](#) [D1213A-01LP4-7B](#)  
[ESD101-B1-02EL E6327](#) [AOZ8808DI-03](#) [5KP15A](#) [5KP48A](#) [5KP90A](#) [ESD3V3D7-TP](#) [15KPA36A-LF](#) [P4KE56CA](#) [P4KE68A](#)  
[P4KE91CATR](#) [P6KE120A](#) [P6KE13CA](#) [P6KE43CA](#) [P6KE6.8CA](#) [P6KE8.2](#) [P6SMBJ20CA](#) [JANTX1N6072A](#) [SR2835ESKG](#)