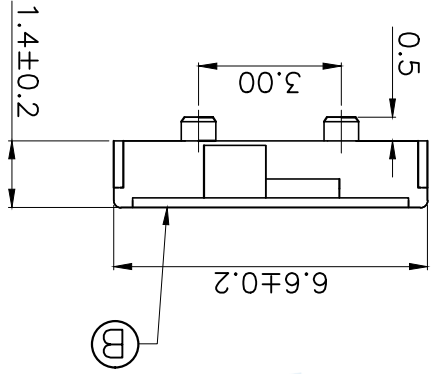
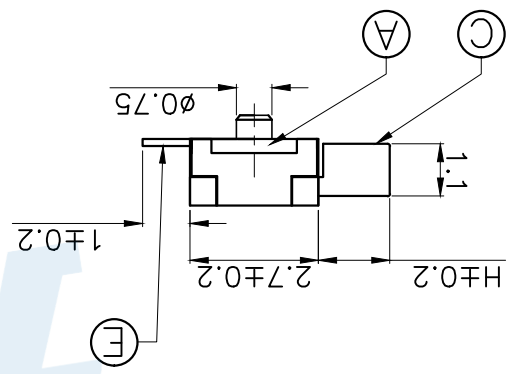


| | | | |
|-----------------|-----|-----|-----|
| Code H | A1 | A2 | A3 |
| Operating force | 1.5 | 2.0 | 2.5 |
| 200±80gf | | | |

| NO. | Name | Number | Qty | Material | Remarks |
|-----|--------------|--------|-----|--------------------|----------------|
| ① | Shrapnel | 1 | 1 | SUS | Natural |
| ② | Terminal | 3 | 3 | Phosphorous copper | Silver |
| ③ | Contact reed | 1 | 1 | Beryllium copper | Silver covered |
| ④ | Handle | 1 | 1 | Nylon | Yellow |
| ⑤ | Cover | 1 | 1 | Brass | Silver |
| ⑥ | Base | 1 | 1 | LCP | Black |

| | | | | | |
|---|-------|-----------------|-------|------------|--|
| YUANDI® Yuandi Electronics Co, Ltd | | | | | |
| design | date | name | model | TA-3524-A□ | |
| Review | date | TOGGLE SWITCH | | | |
| Approved | date | Drawing number: | | | |
| angle | ∠2 | Proportion 1:1 | | | |
| 10~30 | ∠0.30 | unit mm | | | |
| 5~10 | ∠0.20 | gape number | | | |
| ~5 | ∠0.10 | 13 | | | |
| ∠0.10 | ∠0.10 | 14 | | | |
| ∠0.10 | ∠0.10 | 15 | | | |



X-ON Electronics

Largest Supplier of Electrical and Electronic Components

Click to view similar products for [Toggle Switches](#) category:

Click to view products by [Yuandi](#) manufacturer:

Other Similar products are found below :

[A19HV](#) [8A1-C-222](#) [60012L](#) [6006L](#) [6663](#) [7101MD9V30GE](#) [7101SPDV30BE](#) [7103SDV30BE](#) [7105D](#) [7108P3YAV2BE](#) [71YY50282](#)
[7201MD9AVBE](#) [7301K38](#) [7306K36](#) [7310K36](#) [7314K36](#) [7506K4](#) [7592K6](#) [7691K14](#) [7700K1](#) [8396K108](#) [8824K14](#) [8828K13](#) [G2VX](#) [G3VX](#)
[PS83-121G](#) [A101MD9AB04](#) [A101SD9AB04](#) [A101SDCQ04](#) [A103SD9AQ04](#) [A107TZB04](#) [A123P32YZQ](#) [A123S1YZG](#) [A127S1YCQ](#) [1-](#)
[1825192-0](#) [A131S1YZQ](#) [A201SCWZB04](#) [A207SYCB04](#) [A208J61ZQ0004](#) [A221K12KAG](#) [A221S1YZQ](#) [A221T1TCQ](#) [A232K12KZQ](#)
[A232M1YCQ](#) [A323S1CWZQ](#) [A423S1CWZG-M8](#) [A423S1YZQ](#) [12149A-3V](#) [12156AX408](#) [12147AGKX679](#)