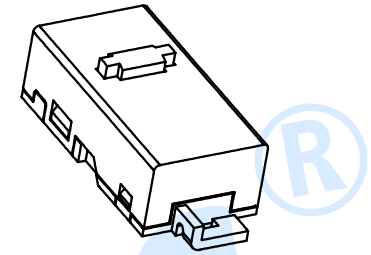
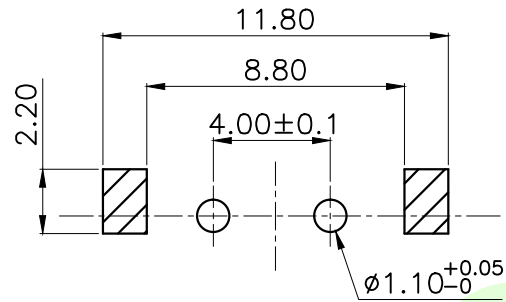
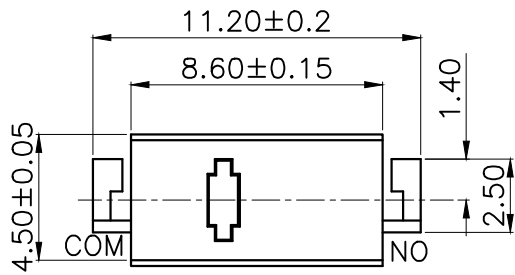
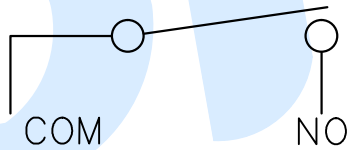
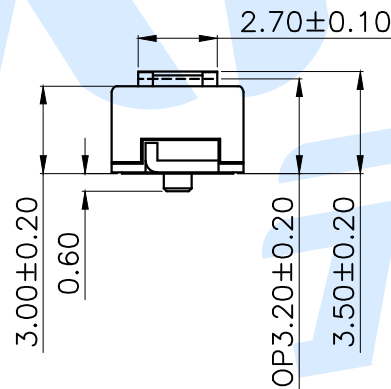
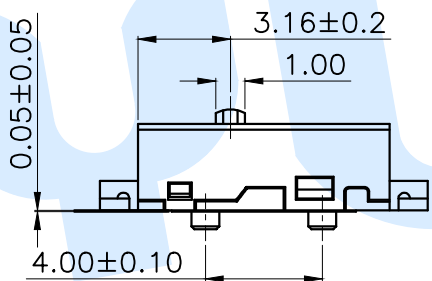


RoHS

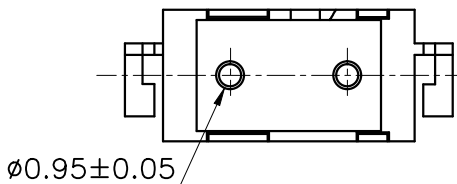


PCB Layout(Pattern side)



Circuit Diagram

- Technical Parameters:
- 1.Rated current: DC 6V 1mA (Minimum load DC 3V 15uA)
 - 2.Contact impedance: 100mΩ Max
 - 3.Insulation resistance: 100MΩ Min (DC 500V)
 - 4.High pressure: AC 600V (50-60Hz) for 1 minute
 - 5.Operating force: 60gf±20gf
 - 6.Resilience: 15gf (Min)
 - 7.Action position: 3.20 ± 0.20 mm
 - 8.Mechanical life: 5,000,000 times



Ⓕ	Contact		1	Silver point	
Ⓔ	Terminal		2	Brass	Silver
Ⓓ	Contact reed		1	Brass	
Ⓒ	Handle		1	PPA	Blue
Ⓑ	Cover		1	PPA	Black
Ⓐ	Base		1	LCP	Black
NO.	Name	Number	Qty	Materil	Remarks

YUANDI® Yuandi Electronics Co, Ltd

design	date	name	MICRO SWITCH
Review	date	name	
Approved	date	name	TC-5608-Y

Drawing number: Proportion 1:1 unit mm gage number A4

modify Review Approved Tolerance not specified

angle ±2'
10~30 ±0.30
5~10 ±0.20
~ 5 ±0.10

X-ON Electronics

Largest Supplier of Electrical and Electronic Components

Click to view similar products for [Basic / Snap Action Switches](#) category:

Click to view products by [Yuandi](#) manufacturer:

Other Similar products are found below :

[5SM901-S12](#) [5SM9-S12N195](#) [602EN532](#) [602EN535-RB](#) [602HE5-RB1](#) [604HE223-6B](#) [624HE17-RB](#) [6HM82](#) [6SE1](#) [6SX1-H58](#) [70599106](#)
[71051](#) [714-0293](#) [MBH2731](#) [79211923](#) [79218589](#) [MIL30126AB6BBMD4A12XAU](#) [ML-1155](#) [ML-1376](#) [831010C3.0](#) [831090C2.EL](#)
[83131904](#) [84212012](#) [8AS239](#) [8HM73-3](#) [8SX26-H33](#) [914CE1-6G](#) [11SM1077-H4](#) [11SM1077-H58](#) [11SM1-TN107](#) [11SM405](#) [11SM703-T](#)
[11SM8423-H2](#) [11SX37-T](#) [11SX48-H58](#) [11SM2442-T](#) [11SM76-T](#) [11SM77-H58](#) [11SM77-T](#) [11SM863-T](#) [11SM866](#) [121EN188-R](#) [1245.0120](#)
[125EN56-RB](#) [D433V3RD](#) [1267.0101](#) [1267.7101](#) [D4BFC1](#) [12SM4-T2](#) [12SX2-T2](#)