



# specification

## SHEET FOR APPROVAL

Part Name: \_\_\_\_\_ electro-magnetic buzzer \_\_\_\_\_  
 Type: \_\_\_\_\_ YX-KC9055 \_\_\_\_\_  
 Customer Name: \_\_\_\_\_  
 Number of the Edition: \_\_\_\_\_



	Approved by	Checked by	Issued by
Signature			
Date			

**Yue Xin Electronics Co., Ltd.**  
 Add: People Industrial Park Chen Bao Town Xinghua City Jiangsu province China  
 Tel: +86 0523 83722059 Fax: +86 0523 83722259  
 Mob/whatsapp: +8615952695023 Mail: [anna@xhyxdz.com](mailto:anna@xhyxdz.com)  
 Web: [www.xhyxdz.com](http://www.xhyxdz.com)



# Electro-magnetic Buzzer

## YX-KC9055

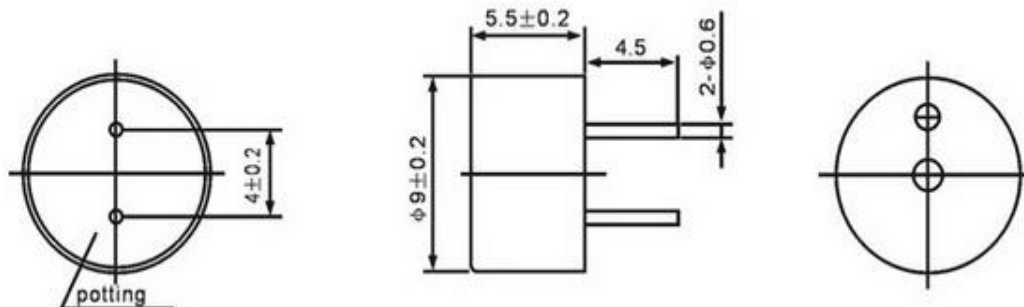


### Electrical Characteristics

Model No.	YX-KC9055		
Rated Voltage(Vo-p)	1.5	3	5
Operating Voltage ( Vo-p )	1-3	2~4	4~6
*Rated Current (mA)			
*Sound Output at 10cm (dB)	80	80	80
Resonant Frequency (Hz)	2731		
Coil Resistance(Ω)	$5.5 \pm 1$	$16 \pm 3$	$40 \pm 4$
Operating Temperature (°C)	-20~+70		
Storage Temperature (°C)	-30~+80		
Weight (g)	1		
Housing Material	PPO		

### Appearance Drawing

( UNT : mm ) Tolerance :  $\pm 0.5\text{mm}$  Except Specified



#### Yue Xin Electronics Co., Ltd.

Add: People Industrial Park Chen Bao Town Xinghua City Jiangsu province China

Tel: +86 0523 83722059 Fax: +86 0523 83722259

Mob/whatsapp: +8615952695023 Mail: [anna@xhyxdz.com](mailto:anna@xhyxdz.com)

Web: [www.xhyxdz.com](http://www.xhyxdz.com)

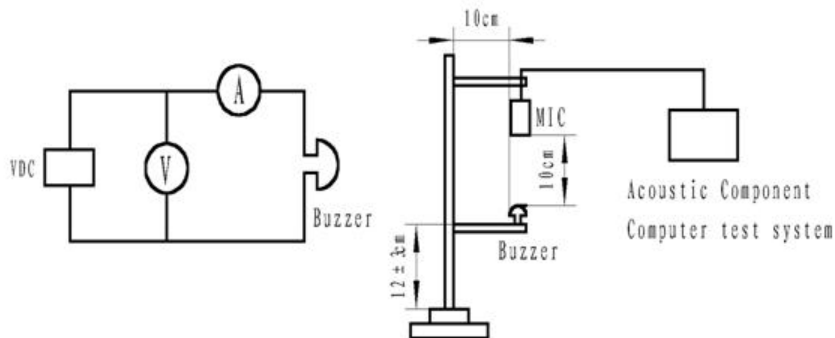


# Electro-magnetic Buzzer

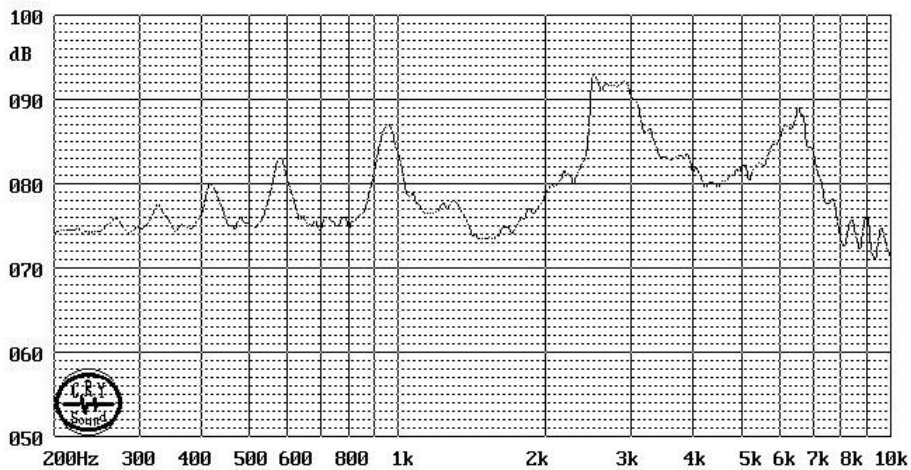
## YX-KC9055



### Testing Method:



### Frequency Response:



### Yue Xin Electronics Co., Ltd.

Add: People Industrial Park Chen Bao Town Xinghua City Jiangsu province China

Tel: +86 0523 83722059 Fax: +86 0523 83722259

Mob/whatsapp: +8615952695023 Mail: [anna@xhyxdz.com](mailto:anna@xhyxdz.com)

Web: [www.xhyxdz.com](http://www.xhyxdz.com)

## X-ON Electronics

Largest Supplier of Electrical and Electronic Components

*Click to view similar products for [Piezo Buzzers & Audio Indicators](#) category:*

*Click to view products by [YUEXIN](#) manufacturer:*

Other Similar products are found below :

[PFD-21A29W](#) [PLD-21N30W](#) [REM-6027F-1.5](#) [RH1020C-010-NFP-G-NL](#) [PFD-27N36W](#) [KBS-20DA-7AS](#) [KBS-27DA-5C-105](#)  
[RFS5015382PNL](#) [MSR516NP](#) [DMT-1606S-NL](#) [OMT112](#) [SCE016SD3CM4B](#) [DMT-09-1-4B-NL](#) [HBO0302C-58/1248](#) [AT-3045-TF-LW110-R](#) [SMA-17-S](#) [BMS3650L-LF](#) [SMT-0540-T-7-R](#) [SMT-0540-T-2-R](#) [AT-0927-TT-2-R](#) [AT-2310-T-LW100-R](#) [SMI-1324-TW-5V-4-R-T/R](#)  
[SC0715BL](#) [AI-1027-TWT-5V-R](#) [SC235AF](#) [SMT-0827-TW-5V-R](#) [AT-2830-TWT-R](#) [AT-1220-TT-5-R](#) [AT-1220-TT-10-R](#) [AT-1127-ST-2-R](#)  
[AT-1220-TWT-5V-R](#) [AT-1750-TFL-LW95-R](#) [AI-2437-TWT-R](#) [SMT-1427-S-R](#) [SMT-1127-S-R](#) [AI-3245-TF-LW95-R](#) [AI-2438-TT-R](#)  
[AB2040B](#) [SMI-1324-TW-3V-R](#) [SMT-1324-TW-5V-R](#) [AT-2429-TWT-R](#) [AI-1223-TWT-12V-3-R](#) [AI-1440-TWT-24V-2-R](#) [AB4113B](#) [AI-1223-TWT-5V-4-R](#) [X-4028-P-C32-R](#) [AI-2304-TF-LW120-12V-R](#) [AI-4329-P-SP28-R](#) [XL-5020-TF-LW150-S-R](#) [SMA-30-P17.5](#)