

# AZ983

## 80 AMP MINI-ISO AUTOMOTIVE RELAY

### FEATURES

- PCB terminals
- 80 Amp contact rating
- High momentary carry current
- High operating temperature (85°C)
- SPST N.O. (1 Form A), SPDT (1 Form C),  
SPST N.C. (1 Form B)
- ISO/TS 16949, ISO14001
- Epoxy sealed version available



### CONTACTS

<b>Arrangement</b>	SPST (N.O.) (1 Form A) SPDT (1 Form C), SPST (N.C.) (1 Form B)
<b>Ratings</b>	Resistive load: Max. switched power: 1120 W (SPST) Form A 840 W (N.O.) Form C 840 W (N.C.) Form C, Form B Max. switched current: 80 A (SPST) Form A 60 A (N.O.) Form C 60 A (N.C.) Form C, Form B Max. switched voltage: 75 VDC
<b>Material</b>	Silver tin oxide
<b>Resistance</b>	< 50 milliohms initially (24 V, 1 A voltage drop method)

### COIL

<b>Power</b>	
At Pickup Voltage (typical)	0.76 W
Max. Continuous Dissipation	3.0 W at 20°C (68°F)
Temperature Rise	68°C (122°F) at nominal coil voltage
<b>Temperature</b>	Max. 155°C (311°F)

### NOTES

1. All values at 20°C (68°F).
2. Relay may pull in with less than "Must Operate" value.
3. Specifications subject to change without notice.

### GENERAL DATA

<b>Life Expectancy</b> Mechanical Electrical	Minimum operations 1 x 10 <sup>7</sup> 1 x 10 <sup>5</sup> at 80 A 14 VDC Res.
<b>Operate Time (typical)</b>	7 ms at nominal coil voltage
<b>Release Time (typical)</b>	5 ms at nominal coil voltage (with no coil suppression)
<b>Dielectric Strength (at sea level for 1 min.)</b>	500 Vrms coil to contact 500 Vrms contact to contact
<b>Insulation Resistance</b>	100 megohms min. at 500 VDC, 20°C 50% RH
<b>Dropout</b>	Greater than 10% of nominal coil voltage
<b>Ambient Temperature</b> Operating Storage	-40°C (-40°F) to 85°C (185°F) -40°C (-40°F) to 105°C (221°F)
<b>Vibration</b>	0.062" DA at 10-55 Hz
<b>Shock</b>	10 g
<b>Enclosure</b>	PA (UL94: V-0)
<b>Terminals</b>	Copper alloy PCB
<b>Max Solder Temp.</b>	270°C (518°F)
<b>Max Solder Time</b>	5 seconds
<b>Max Solvent Temp.</b>	80°C (176°F)
<b>Max Immersion Time</b>	30 seconds
<b>Weight</b>	40 grams

**AMERICAN ZETTLER, INC.** [www.azettler.com](http://www.azettler.com)

75 COLUMBIA • ALISO VIEJO, CA 92656 • PHONE: (949) 831-5000 • FAX: (949) 831-8642 • E-MAIL: SALES@AZETTLER.COM

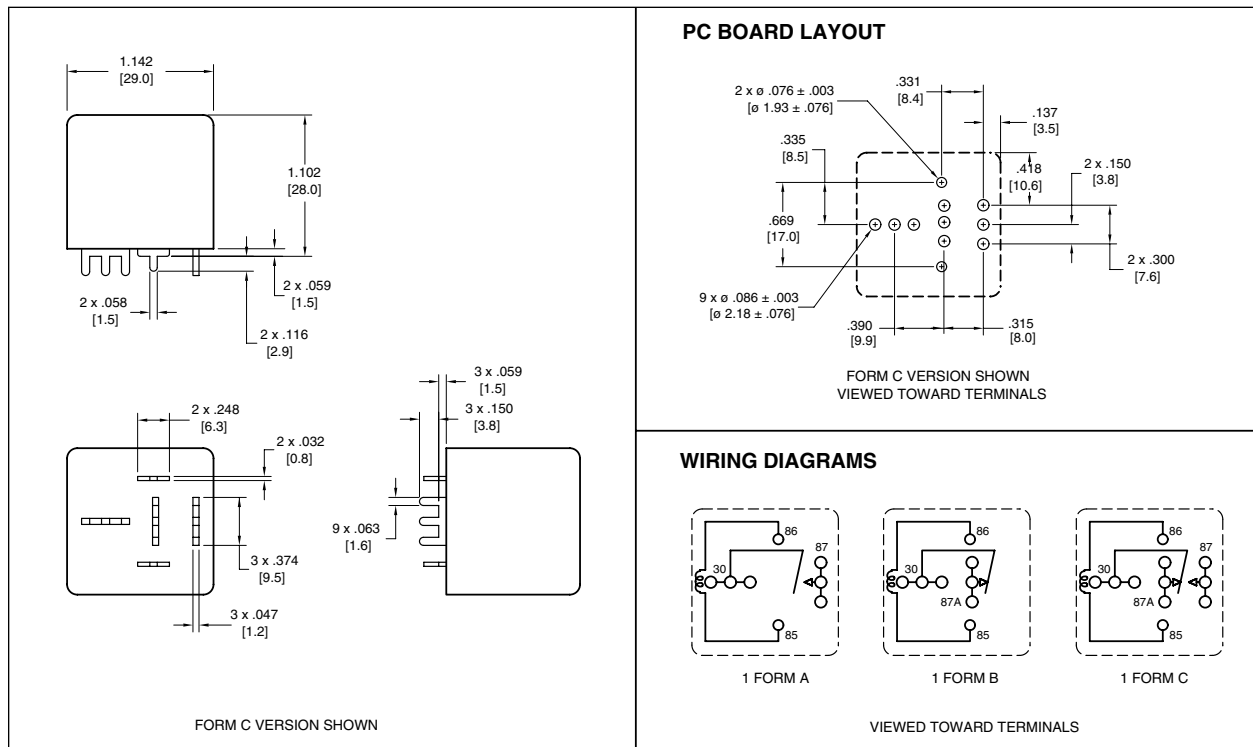
# AZ983

## RELAY ORDERING DATA

COIL SPECIFICATIONS				ORDER NUMBER*	
Nominal Coil VDC	Must Operate VDC	Max. Continuous VDC	Coil Resistance $\pm 10\%$	SPST (N.O.)	SPDT
6	3.9	7.8	20	AZ983-1A-6D	AZ983-1C-6D
12	7.8	15.6	80	AZ983-1A-12D	AZ983-1C-12D
24	15.6	31.2	320	AZ983-1A-24D	AZ983-1C-24D

\*For SPST (N.C.) (1 Form B) relay, substitute "-1B" for "-1A". Add suffix "R" for resistor in parallel with coil. Resistor values: 6V: 180 ohms, 12V: 680 ohms, 24V: 2700 ohms. Add suffix "D" for diode across coil option ("+" pole of power supply at terminal #86). Add Suffix "E" for epoxy sealed version.

## MECHANICAL DATA



Dimensions in inches with metric equivalents in parentheses. Tolerance:  $\pm .010$ "

**AMERICAN ZETTLER, INC.** [www.azettler.com](http://www.azettler.com)

75 COLUMBIA • ALISO VIEJO, CA 92656 • PHONE: (949) 831-5000 • FAX: (949) 831-8642 • E-MAIL: SALES@AZETTLER.COM

## **X-ON Electronics**

Largest Supplier of Electrical and Electronic Components

*Click to view similar products for [zettler](#) manufacturer:*

Other Similar products are found below :

[AZ941-1C-5DE](#) [AZ976-1C-12DE](#) [AZ2693-118-52](#) [AZ6962-2CE-12DE](#) [AZ732-112-2](#) [AZ830-2C-6DSE](#) [AZ1530-08-2](#) [AZ2110-1A-6D](#)  
[AZ2111-1C-18D](#) [AZ2428-035-40LUS](#) [AZ2510P2-1A-24D](#) [AZ2693-560-2](#) [AZ2800-2A-6DE](#) [AZ420-1011-4L](#) [AZ428-035-4H](#) [AZ429-V12-10L](#) [AZ431-V09-11](#) [AZ439-13-1H](#) [AZ5-5DSE](#) [AZ692-560-2](#) [AZ732-125-2](#) [AZ8-1CT-9DE](#) [AZ847P2-24](#) [AZ973-1A-12DC2](#) [AZ973-1C-12DC3ER1](#) [AZ9801](#) [AZ9801-1A-12D](#) [AZ988-1CT-12DC1](#) [AZ165-4C-12D](#) [AZ2150-1A-6D](#) [AZ2428-56-40LUS](#) [AZ2428-V80-201](#) [AZ2700-2A-12D](#) [AZ420-40-40L](#) [AZ420-40-40LUS](#) [AZ421-035-1H](#) [AZ421-15-10LUS](#) [AZ428-1011-4T](#) [AZ428-70-40H](#) [AZ428-V10-4H](#) [AZ428-V50-40H](#) [AZ429-V05-10L](#) [AZ439-06-10LUS](#) [AZ6951-6G](#) [AZ725-1C-12DE](#) [AZ762-1C-115AF](#) [AZ762-1C-48DEF](#) [AZ8-1C-9DE](#) [AZ8-1CT-6DE](#) [AZ830-4C-5DSEA](#)