

# Keymodule



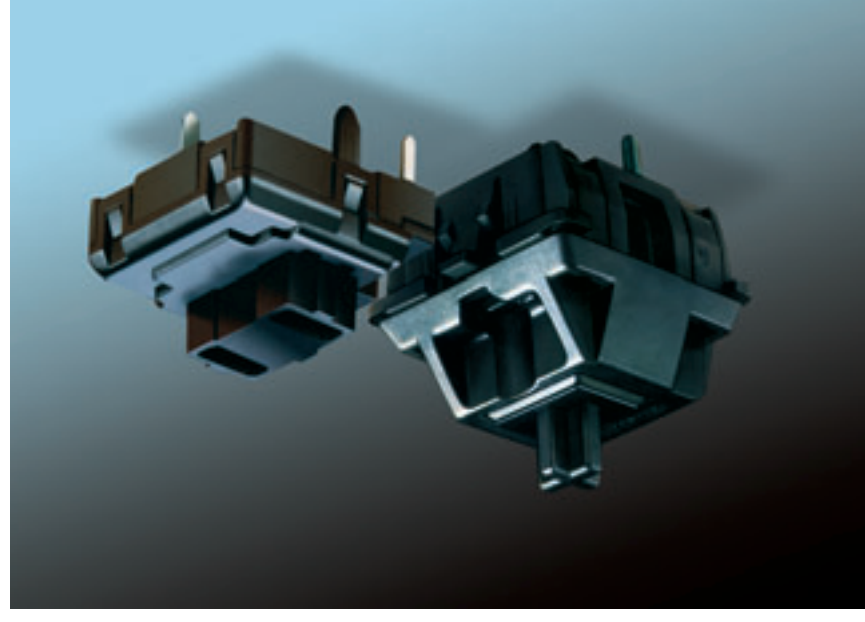
Cherry GmbH  
Cherrystrasse  
D-91275 Auerbach/Opt.  
Phone: (0 96 43) 18 - 0  
Hotline: (0 96 43) 18 - 2 06  
Fax: (0 96 43) 18 - 15 45  
Internet: [www.cherry.de](http://www.cherry.de)  
800407  
The manufacturer accepts  
no liability for errors or  
changes in specification.  
Printed in Germany.  
45392530  
E, Juni 2002  
3, Mün  
© 2002 Cherry GmbH

# Contents

2	General Information
3	Technical Data
4	Keymodule ML
6	Keymodule MX

Cherry key modules are mechanical input elements with a single-gap make contact element. Low assembly height, pleasant feel and excellent contact reliability thanks to Gold-crosspoint contact technology allow flexible designing of low-cost keypads and keyboards. Depending on the key cap, different lead spacings are also possible.

Very short bounce times, very pleasant feel and exceptionally high reliability and durability pave the way for a wide range of applications.



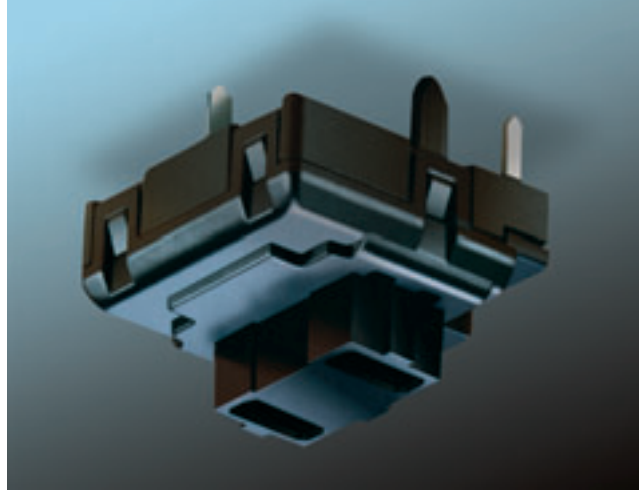
# Technical Data

	Model ML	Model MX
<b>Electrical Characteristics</b>		
Switching voltage	12 V AC/DC	12 V AC/DC max, 2 V DC min
Switching current	10 mA AC/DC max, 10 uA DC min.	10 mA AC/DC max, 10uA DC min.
Contact resistance	≤ 200 mW (typically: 25 m)	≤ 200 mW (typically 25 m)
Capacity at 1kHz	≤ pF	≤ pF
Dielectric strength	500 V/50Hz	500 V/50Hz
Isolation resistance (new)	100 MΩ	100 MΩ
Durability at 5V, 1mA linear	—	50x10 <sup>6</sup> linear
Durability at 5V, 1mA pressure point	20x10 <sup>6</sup>	50x10 <sup>6</sup> pressure point
Service life at 5V	—	0,5x10 <sup>6</sup> latched pushbutton
1mA latched pushbutton	—	1x10 <sup>6</sup>
MCBF	—	—
<b>Mechanical Characteristics</b>		
Number of contacts	Single-gap make contact element	Single-gap make contact element
Action	Pressure point	Linear, pressure point, latching
Actuator travel	3,0 -0,5 mm	4,0 -0,4 mm Pulse / 4,2 ±0,3 mm latching
Pre-travel	1,5 ±0,5 mm	2 ±0,6 mm Pulse / 1,4 ±0,4 mm latching
Initial force	30 cN min	40 cN
Activation force	45 ±20 cN	60 +20 cN linear and latching; 45 ±20 cN pressure point
Pressure point force	50 ±20 cN	55 ±20 cN
Bounce time during actuation with 0,4 m/s	≤ 5 ms	≤ 5 ms
Standard lead spacing	19,05 mm (16 mm min)	19,05 mm (16 mm min)
Fastening	Fixing pins in the printed circuit board	Snap fastening in frame or Fixing pins in the printed circuit board
Lighting (optional)	—	LED in red, green or yellow
Decoupling diode	—	optional
Wire jumper	—	optional
<b>Materials</b>		
Insulation materials	Thermoplastics (min UL 94 HB)	Thermoplastics UL listed
Spring	Stainless steel	Stainless steel
Contacts	AuAg 10	High-quality gold alloy
<b>Other Characteristics</b>		
Protection class	IP 40	IP 40
Operating temperature	-10 °C to +70 °C	-10° C to +70° C
Storage temperature	-40 °C to +70 °C	-40° C to +70° C
Humidity (without condensation)	5% to 95%	5% to 95%
Soldering capability	DIN IEC 68	DIN IEC 68
Soldering temperature/duration	260 °C / 5s	260 °C / 5s

# Keymodule ML

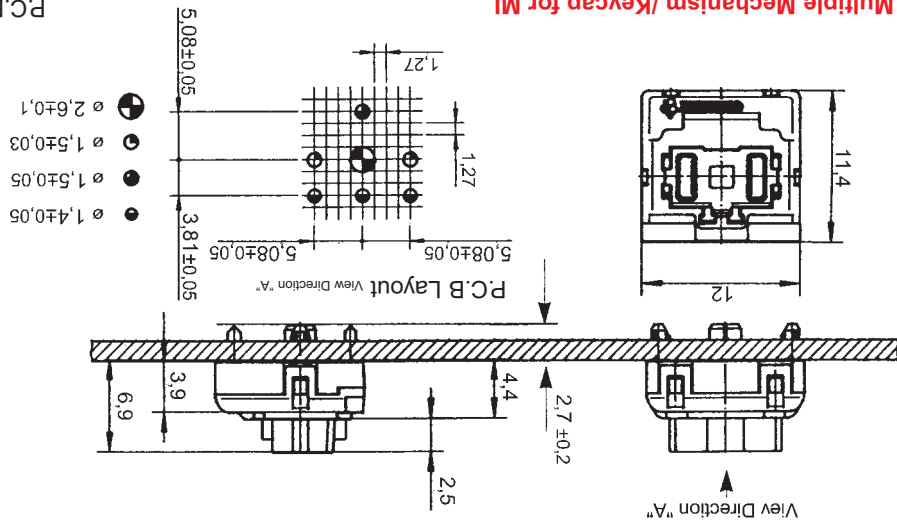
## Description

The Cherry ML key module is a mechanical switching element using single-gap make contact element in Gold-Crosspoint contact technology. Its pleasant feel makes the module particularly suitable for low-cost construction of keyboards and keypads with great diversity and very low height. A multitude of different cap shapes allows flexible designs. Very short bounce time, reliable stroke, pleasant feel and enormous cost-savings pave the way for a wide range of applications.

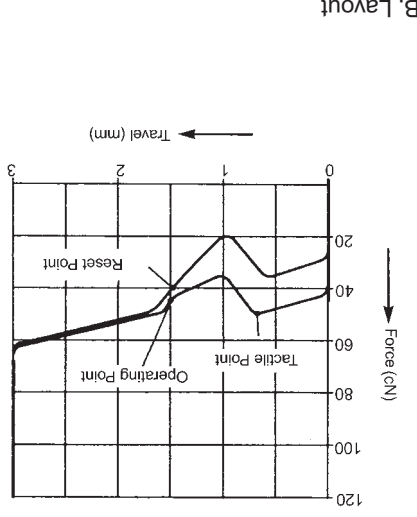


Flat key modules ML

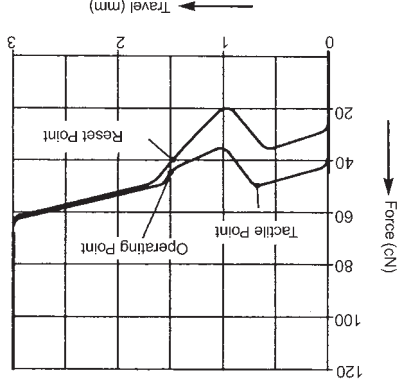
## Keymodule Dimensions



## Multiple Mechanism /Keycap for ML



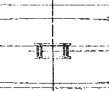
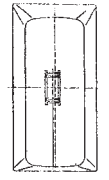
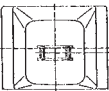
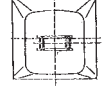
## Force Travel Diagram



## Keycaps and mechanics

Keycap Format	Ordering-Numbers	Dimension X	Bar	Assembly number (mechanical parts and bar)
1x1	6753-0001	-	-	-
1x0,84	6743-0001	-	-	-
1x1,25	6753-0008	-	-	-
1x2	6767-0004	614-5007	G99-1303 ZUB	-
1x1,53	6763-0004	614-5004	G99-1300 ZUB	-
1x1,75	6763-0001	614-5005	G99-1301 ZUB	-
1x2,25	6763-0020	614-5007	G99-1303 ZUB	-
1x5	6763-0002	614-5010	G99-1370 ZUB	-
1x7	6763-0029	614-5010	G99-1370 ZUB	-

## Keymodule



## Accessories:

Stock code 609-5292

## Empty housing:

- ① ML
- ② 1
- ③ A
- ④ -
- ⑤ 1
- ⑥ N
- ⑦ W

## Ordering code:

- ① Series
- ② Contact material
- ③ Contact mounting
- ④ Actuation
- ⑤ Cap support
- ⑥ Mounting
- ⑦ Fixing pins
- 1 = AuAg10 (max. 10mA, 12V)
- A = 1 contact making element
- 1 = Linear feel
- 1 = Standard, straight for 8 mm cap
- N = Without jumper
- J = With Jumper
- W = With Pins

# Keymodule MX

## Description

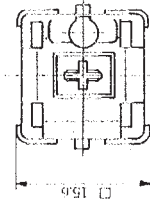
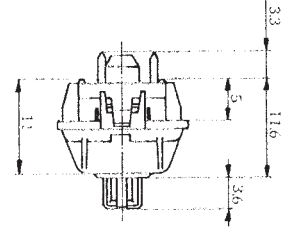
The construction of the key and the ergonomic requirements for computer workplaces. Long durability thanks to Gold-Crosspoint contacts and high reliability for fast typing. With either integrated color LED decoupling diode or wire jumper.

MCBF = 1x10<sup>6</sup>

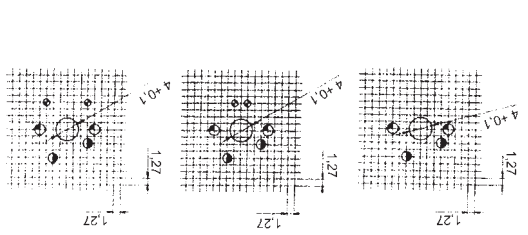


Tastenmodul MX

## View of Keymodule

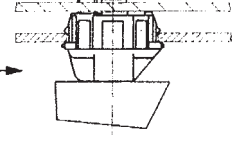
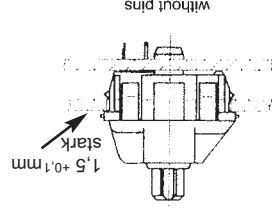
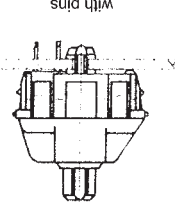


## Layout of P.C.B.



\* nur für Ausführung mit Fixierpin

## Keypress Assembly

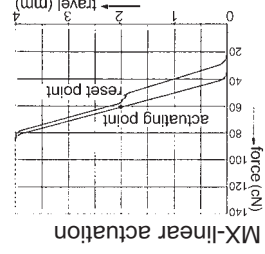


Ordering-Number:  
604-0324

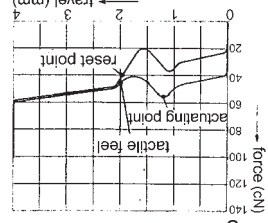
## Locking Unit



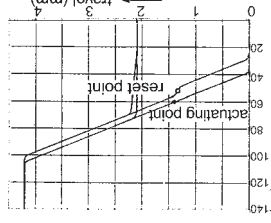
## Force/Travel Diagram



MX with click tactile feel ergonomic

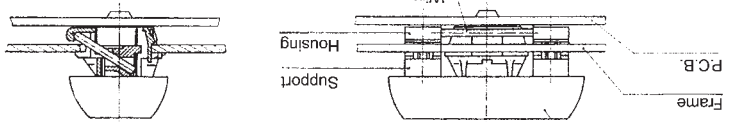
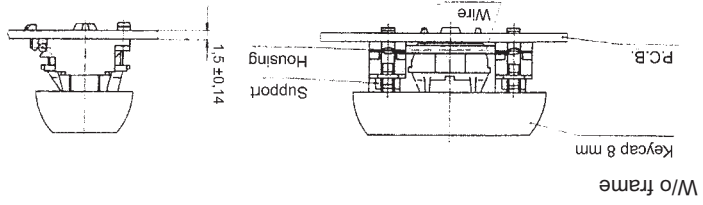


MX with alternate action

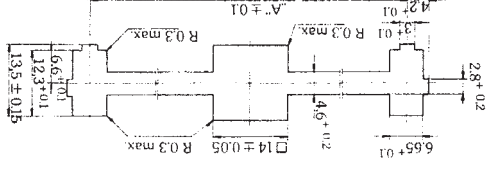


The special advantage of the MX key feel.

## Spacer Mechanism



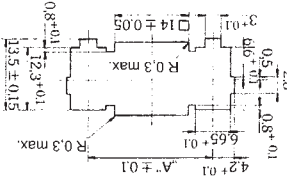
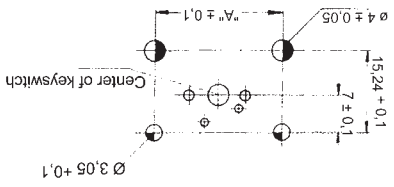
Cutout of frame for keycap sizes  
1x3, 1x7, 1x8, 1x9, 1x10



## Size of keycap

Size of keycap	Type of keycap	"A" (in mm)	Part No. with frame	Part No. w/o frame
1x2	8 mm	23,8	G99-0224	G99-0742
1x2,25	8 mm	38,1	G99-0225	G99-0743
1x3	8 mm	133,35	G99-0226	G99-0744
1x8	8 mm			

Cutout of frame for keycap sizes  
1x2, 1x2,25, 1x2,75



- ① Series
- ② Contact material
- ③ Contact mounting
- ④ Actuation

- ⑤ Cap support
- ⑥ Mounting

- ⑦ Fixing pins

Typ MX  
1 = AuAg10 (max. 10mA, 12V)  
A = 1 contact making element  
1 = Linear feel  
G = Soft tactile feel  
3 = Click tactile  
1 = Standard, straight for 8 mm cap  
N = Without LED, without diode  
R = Red LED, without diode  
G = Green LED, without diode  
Y = Yellow LED, without diode  
D = With diode, without LED  
J = With Jumper  
without LED or Diode  
N = Without pins (frame required)  
W = With Pins (no frame required)

Ordering code:  
MX ① ② ③ A - ④ ⑤ ⑥ ⑦ N

The manufacturer accepts no liability for errors or non-availability, and reserves the right to change specifications without prior notice. Technical data relate to product specifications only. Features may differ from those described. Only drawings combined with product specifications shall be deemed binding.

## X-ON Electronics

Largest Supplier of Electrical and Electronic Components

*Click to view similar products for [Switch Cases / Switch Covers](#) category:*

*Click to view products by [ZF Cherry](#) manufacturer:*

Other Similar products are found below :

[704.925.2](#) [AMS-8C](#) [AP-DV](#) [PBBOX1HBY](#) [PBBOX3HBY](#) [PBBOX4HBY](#) [SA1074](#) [A16ZJ-5060](#) [A22Z-EG10-W](#) [A3B012R](#) [HE9Z-D5Y](#)  
[HG9Z-2D2](#) [61-9920.0](#) [61-9927.2](#) [PBBOX2HBY](#) [61-9924.0](#) [A3C-3002](#) [L188](#) [EUK-704.927.0](#) [SA1072-B](#) [SA1072](#) [EUK-704.927.4](#)  
[DPS8SGB54](#) [L167](#) [W42](#) [L180](#) [M1080-2](#) [M539](#) [HE9Z-D5B](#) [AT9444-082G](#) [08-0-0-01 905](#) [08-0-0-02](#) [A165-CTA](#) [A22Z-EG2](#) [RA1540109](#)  
[RA1540209](#) [1.30070.0211306](#) [435238-5](#) [M1080-1](#) [5.49257.0111502](#) [5.49275.0361303](#) [AML55-N10RK](#) [AML55-N10RR](#) [AML55-H10BB](#)  
[E50SN](#) [AML55-T10YY](#) [5.49.275.032/1601](#) [704.927.6](#) [1.30070.2510100](#) [1.30070.2510500](#)