



DH 2 ultra-miniature switch

Technical specifications

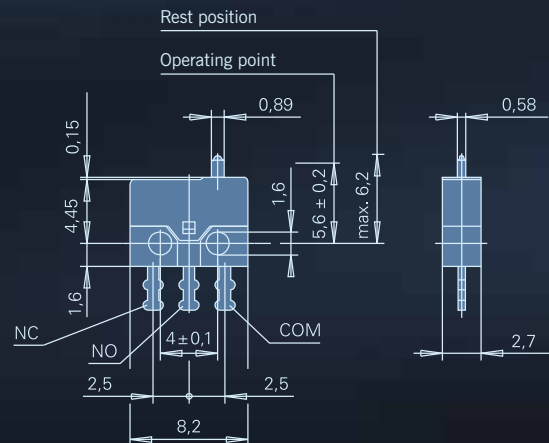
Contact configuration	S.P.D.T.
Contact gap	< 3 mm
Switching voltage max.	30VDC
Switched current	5 to 500mA DC
Operating force max.	90 cN
Total travel	ca. 0,85 mm without auxiliary actuator
Mechanical life	> 50.000 operations
Electrical life (max. load)	> 30.000 operations
Ambient temperature	-25°C to +70°C
Materials	
Housing	PPS (UL 94V-0)
Cover	PBT (UL 94V-0)
Auxiliary actuator	PBT (UL 94V-0)
Terminals	CuZn striped silver-plated
Contacts	AgNi, gal. Au
Degree of protection (switch interior)	IP40

For detailed information and the layout of the details described above, please do not hesitate to ask for our technical specifications and drawing.

Features

- Extremely small size (only 8,2x2,7x6,2 mm)
- Specially-conceived for low switching currents and voltages
- Available with or without integrated auxiliary actuator
- Solder connection or use lying or standing on a circuit board

Dimensions in mm



Auxiliary actuator options

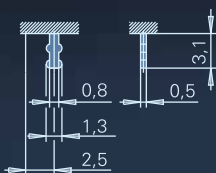
Auxiliary actuator	Operating force max. (cN)	Max. pretravel (mm)	Min. overtravel (mm)	Differential travel max. (mm)	Max. rest position (mm)	Operating point (mm)
Without auxiliary actuator	90	0,35	0,1	0,07	6,2	$5,6 \pm 0,15$
With auxiliary actuator	50	1,3	0,3	0,6	8,5	$6,7 \pm 0,5$

Preferred parts

Order code	Electrical rating	Terminals	Auxiliary actuator	Operating force (cN)	Operating point (mm)	Max. pretravel (mm)	Min. overtravel (mm)	Differential travel max. (mm)
DH2C-B1AA	5–500mA, 30VDC	Solder terminal straight, 1,3x3,1 mm	–	90	$5,6 \pm 0,15$	0,35	0,1	0,07
DH2C-B1PA	5–500mA, 30VDC	Solder terminal straight, 1,3x3,1 mm	Plastic, straight	50	$6,7 \pm 0,5$	1,3	0,3	0,6
DH2C-C4AA	5–500mA, 30VDC	PCB terminal straight, 0,64x3,1 mm	–	90	$5,6 \pm 0,15$	0,35	0,1	0,07
DH2C-C5AA	5–500mA, 30VDC	PCB terminal right, 0,64x3,1 mm	–	90	$5,6 \pm 0,15$	0,35	0,1	0,07
DH2C-C6AA	5–500mA, 30VDC	PCB terminal left, 0,64x3,1 mm	–	90	$5,6 \pm 0,15$	0,35	0,1	0,07

Terminals

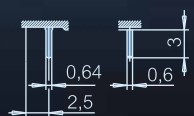
Solder terminal



Drilling pattern



PCB terminal straight



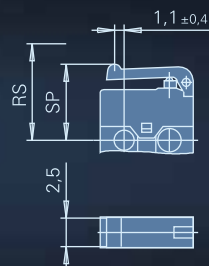
PCB terminal
RH-side



LH-side



Auxiliary actuator options (plastic)



X-ON Electronics

Largest Supplier of Electrical and Electronic Components

Click to view similar products for [Basic / Snap Action Switches](#) category:

Click to view products by [ZF Cherry](#) manufacturer:

Other Similar products are found below :

[83228001](#) [01.098.1358.1](#) [602EN1-6B](#) [602EN532](#) [602EN535-RB](#) [602HE5-RB1](#) [604HE162](#) [604HE223-6B](#) [624HE17-RB](#) [6HM89](#) [6PA78-JM](#)
[6SE1](#) [6SX1-H58](#) [70500840](#) [MBD5B1](#) [MBH2731](#) [73-316-0012](#) [79211759](#) [79211923](#) [79218589](#) [7AS12](#) [ML-1155](#) [ML-1376](#) [831010C3.0](#)
[831060C3.TL](#) [831090C2.EL](#) [83131904](#) [84212012](#) [8AS239](#) [8HM73-3](#) [903VB1-PG](#) [914CE1-6G](#) [PL-100](#) [11SM1077-H4](#) [11SM1077-H58](#)
[11SM1-TN107](#) [11SM405](#) [11SM703-T](#) [11SM8423-H2](#) [11SX37-T](#) [11SX48-H58](#) [11SX55-H58](#) [11SM2442-T](#) [11SM76-T](#) [11SM77-H58](#)
[11SM77-T](#) [11SM863-T](#) [11SM866](#) [11SX47-H58](#) [A7CN-1M-1-LEFT](#)