

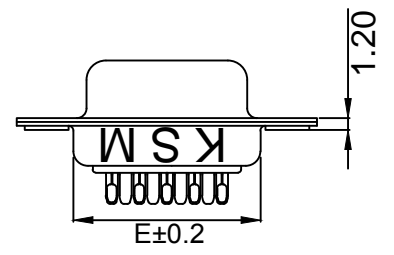
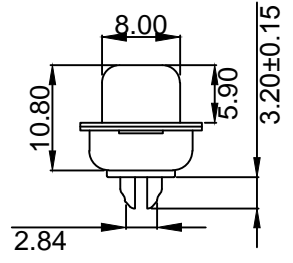
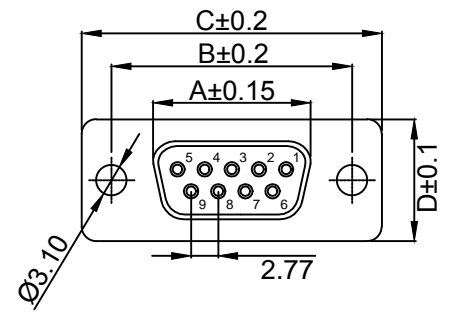


Material

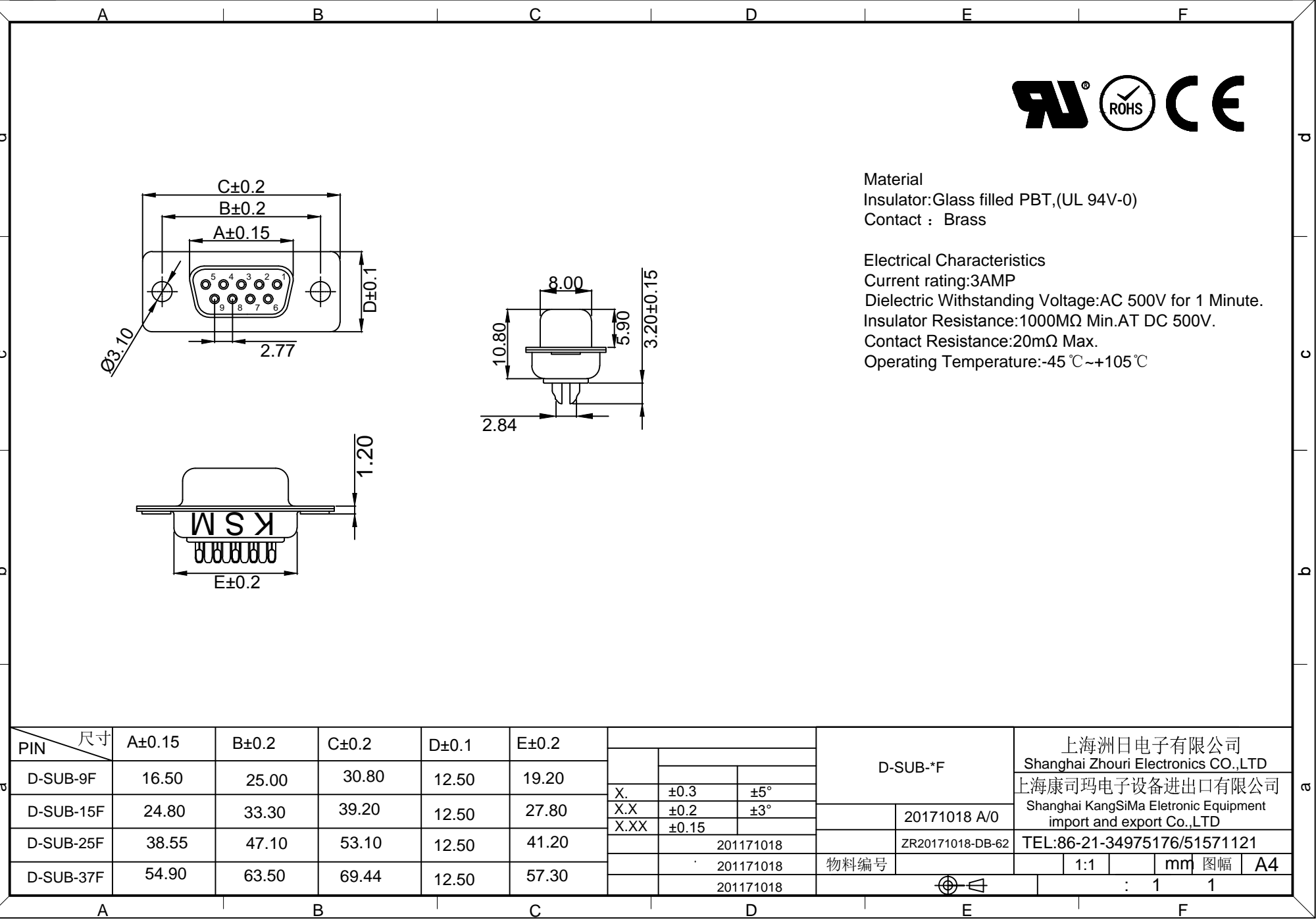
Insulator: Glass filled PBT, (UL 94V-0)
 Contact : Brass

Electrical Characteristics

Current rating: 3AMP
 Dielectric Withstanding Voltage: AC 500V for 1 Minute.
 Insulator Resistance: 1000MΩ Min. AT DC 500V.
 Contact Resistance: 20mΩ Max.
 Operating Temperature: -45 °C ~ +105 °C



| PIN | 尺寸 | A±0.15 | B±0.2 | C±0.2 | D±0.1 | E±0.2 | D-SUB-*F | | | 上海洲日电子有限公司 Shanghai Zhouri Electronics CO.,LTD | | | | | |
|-----------|----|--------|-------|-------|-------|-------|-----------|-------|-----|--|-----------------------------|-------|--|--|--|
| | | | | | | | X. | ±0.3 | ±5° | 上海康司玛电子设备进出口有限公司 Shanghai KangSiMa Eletronic Equipment import and export Co.,LTD | | | | | |
| D-SUB-9F | | 16.50 | 25.00 | 30.80 | 12.50 | 19.20 | X.X | ±0.2 | ±3° | 20171018 A/0 | TEL:86-21-34975176/51571121 | | | | |
| D-SUB-15F | | 24.80 | 33.30 | 39.20 | 12.50 | 27.80 | X.XX | ±0.15 | | | | | | | |
| D-SUB-25F | | 38.55 | 47.10 | 53.10 | 12.50 | 41.20 | 201171018 | | | ZR20171018-DB-62 | | | | | |
| D-SUB-37F | | 54.90 | 63.50 | 69.44 | 12.50 | 57.30 | 201171018 | | | 物料编号 | | | | | |
| | | | | | | | 201171018 | | | ⊕ | | : 1 1 | | | |



X-ON Electronics

Largest Supplier of Electrical and Electronic Components

Click to view similar products for [D-Sub Standard Connectors](#) category:

Click to view products by [ZHOURI](#) manufacturer:

Other Similar products are found below :

[015-0339-000](#) [015-0341-000](#) [015-0349-000](#) [015-0350-000](#) [015-8544-011](#) [015-8755-001](#) [017041-0005](#) [020419-0104](#) [609-25P](#) [609-9P](#)
[M24308/2-23Z](#) [CT0-24-10SC](#) [CT0-36-3PC](#) [CT0E20-8PS](#) [CT0F16S-1PS](#) [CT0TA16-11SXCA232](#) [CT1E20-19SS](#) [CT2-10SL-3SC](#) [CT2-14S-](#)
[2PCA34](#) [CT2-18-11PCAU](#) [CT2-22-19SC](#) [CT2-36-5PC](#) [CT6-10SL-3SC](#) [CT6-10SL-4SC](#) [CT6-14S-2SC](#) [CT6-16-12SC](#) [CT6-18-10PSA206](#)
[CT6-18-10PSA232](#) [CT6-18-11PXSA206](#) [CT6-18-11PXSA232](#) [CT6-22-10PS](#) [CT6-24-5PC](#) [CT6-9767-18-8-18-4SS](#) [CT6E14S-5SC](#)
[CT6E14SA7SC](#) [CT6E20-14SS](#) [CT6E22-14PC](#) [CT6E22-14PS](#) [CT6E22-19PS](#) [CT6E22-22PS](#) [CT6E24-10SC](#) [CT6F16S-1SC](#) [CT6FA10SL-4PS](#)
[CT6LA20-19PC](#) [CT6M20-19SS](#) [CT6NSB4-20-8SS](#) [CT6TC14S-6SCAU](#) [CT6TC14S-7PS](#) [6STD15SCT99S40X](#) [6STF09PCM05B70X](#)