

ZMOTION PIR Sensors

Zilog's PIR sensors are designed to deliver high performance and excellent EMI immunity for the most demanding motion detection applications.

Available in both TO-5 and IR reflow compatible Surface Mount packages, Zilog PIR sensors provide an excellent balance of cost and performance.

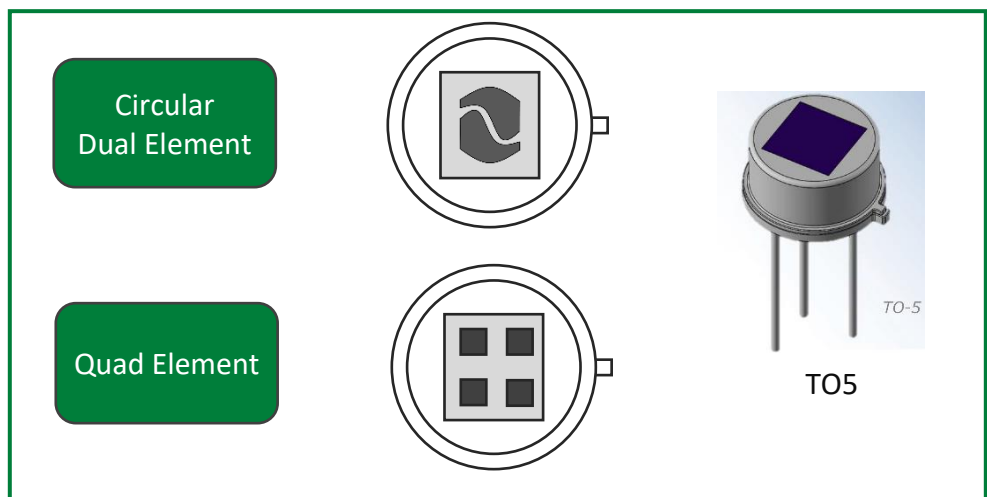
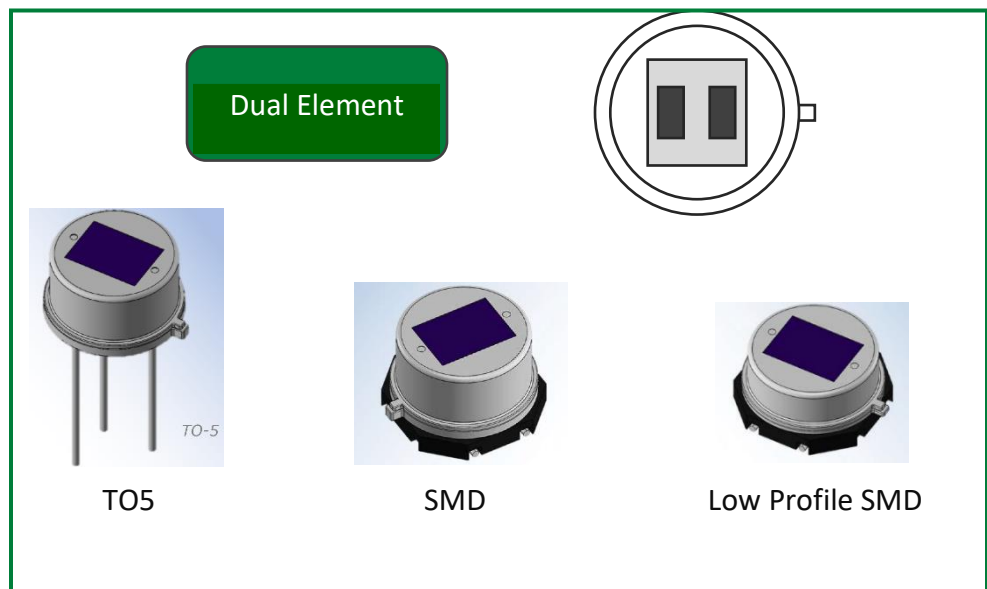
PIR sensors vary by number of elements, element size and spacing, package type, window size, EMI protection and operating voltage.

Zilog PIR sensors are suitable for applications requiring:

- Pet Immunity
- Low Power operation
- Simplified manufacturing flow
- Small footprint
- White Light Immunity
- High EMI and ESD Immunity
- Sensitive walk-up detection
- Zone detection with multiple sensors

Applications

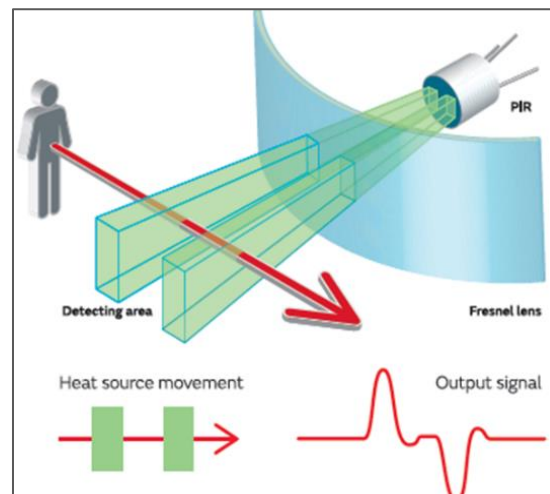
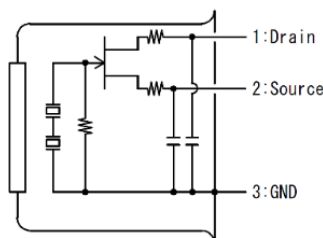
- Intrusion/Security
- Lighting Control
- Thermostats
- Access Control
- Vending
- Video Doorbells
- Smart Displays
- Proximity Detection
- Power Management
- IP Cameras
- Occupancy Sensing
- Home Appliances
- Outdoor Lighting
- IoT Sensors
- Zone Detection



PIR Sensor Technology

PIR Sensors are used in combination with a lens and consists of two or four sensing elements behind a spectral filter window tuned to 8-13um wavelength to help block out unwanted IR energy sources.

As the focused IR energy moves across the sensor elements, the charge differential generates a small voltage at the gate of a low leakage FET. The output signal is presented from the FET Source pin. To improve EMI and ESD performance, capacitors are included inside the metal package.



PIR Sensor Selection Table

Part Number	Description/Features	Package	EMI Compensation	White Light Protection	Operating Voltage	Applications
ZRE200GE	Dual-element sensor 2 Elements (1.0mm x 2.0mm) spaced 1.0mm apart	TO-5	-	-	3.0V – 10V	General purpose motion detectors Wall mount HVAC control, Lighting, Doorbell, IP Camera
ZSBG323671	Dual-element sensor 2 Elements (1.0mm x 2.3mm) spaced 1.0mm apart	TO-5	Yes	-	3.0V – 10V	Intrusion motion detectors IP Cameras and Video Doorbells Wall mount lighting/HVAC control
ZSBG323611PP	Dual-element polarity matched sensor 2 Elements (1.0mm x 2.3mm) spaced 1.0mm apart	TO-5	Yes	-	1.0V – 15V	Battery powered applications Dual PIR Intrusion motion detectors Multi-PIR zone and proximity detection
ZSFG223611	Dual-element sensor 2 Elements (0.75mm x 2.3mm) spaced 0.6mm apart	TO-5	Enhanced	Yes	1.0V – 15V	Battery powered applications Intrusion motion detectors IP Cameras and Video Doorbells Wall mount lighting/HVAC control
ZSLM323511	Dual-element sensor 2 Elements (0.75mm x 2.3mm) spaced 0.6mm apart Sensor height matches standard TO-5	Low Profile SMD	Enhanced	Yes	1.0V – 15V	Battery powered applications Intrusion motion detectors IP Cameras and Video Doorbells Wall mount lighting/HVAC control, Home Appliances
ZSFM323511	Dual-element sensor 2 Elements (0.75mm x 2.3mm) spaced 0.6mm apart Same size as TO-5 supporting standard clip-on lenses	SMD	Enhanced	Yes	1.0V – 15V	Battery powered applications Intrusion motion detectors IP Cameras and Video Doorbells Wall mount lighting/HVAC control, Home Appliances
ZSFG469711	Circular dual-element sensor 2 Elements with tapered circular shape Provides improved walk-up detection	TO-5	Yes	-	1.0V – 15V	Battery powered applications Ceiling mount 360° motion detectors IP Cameras and Video Doorbells Intrusion motion detectors Wall mount lighting/HVAC control
ZSBG446671	Quad-element sensor 4 Elements (1.0mm x 1.0mm) spaced 1.0mm apart Symmetrical sensor organization	TO-5	Yes	-	3.0V – 10V	Ceiling mount 360° motion detectors Intrusion motion detectors Lighting and HVAC control

X-ON Electronics

Largest Supplier of Electrical and Electronic Components

Click to view similar products for [Board Mount Motion & Position Sensors](#) category:

Click to view products by [ZiLOG](#) manufacturer:

Other Similar products are found below :

[6SS4](#) [XL-10043](#) [F02008062](#) [9970-090-9J-SA](#) [AS5270B-HMFM](#) [IPS2200BI1W](#) [G-MRCO-057](#) [RD602C003A](#) [RDC50C001A](#) [RD602B004A](#)
[RD6R1A0019](#) [RD712A029C](#) [MB060-N-221-A02](#) [MB090-N-221-A02](#) [IIM-46230](#) [USEQMSKL221600](#) [IIM-46234](#) [EVW-ADF001B14](#)
[MLX90316KDC-BDG-100-RE](#) [AMN11111](#) [AMN31111](#) [AMN34112](#) [AMN23111](#) [SV03A103AEA01R00](#) [EKMB1303111K](#) [EKMB1293112](#)
[A1324LLHLTT](#) [RBS130100](#) [RBS130200](#) [EKMB1305113K](#) [EKMB1105113](#) [EKMB1205113](#) [OKY3062-2](#) [OKY3062-4](#) [OKY3062-5](#)
[OKY3063](#) [OKY3221](#) [OKY3226](#) [OKY3227](#) [OKY3230](#) [OKY3231](#) [OKY3231-1](#) [OKY3231-2](#) [OKY3231-3](#) [OKY3231-4](#) [OKY3231-5](#)
[OKY3231-6](#) [OKY3231-8](#) [OKY3235](#) [OKY3238](#)